



Photo from our local documentary: *Then, Now and Always . . . The St. Joseph River Story*

Michiana Public Media wnit

Annual Report 2021



Board of Directors

Chairman

James Hillman

Vice Chair

Robert G. Douglass

Secretary

Hayley G. Boling

Treasurer

William J. Schmuhl, Jr.

Immediate Past Chair

Susan Ohmer, Ph.D.

Directors

Jim Arnold

Tania Bengtsson

Marvin Curtis

Joel D. Duthie

Mary Horan

Katherine Humphreys

Brian Inniger

Paul Jordan

Trevor Kubatzke

John Lloyd

Christine M. Maziar

Pat Moody

Mike Pound

Rebecca Stoltzfus, Ph.D.

James M. Summers

Andraé Townsel

Michael Wargo

Duane Wilson

Marcus Winchester

Linda Yoder

John Zeglis

President and

General Manager

(Ex-Officio Board Member)

Greg Giczi

Charter Directors

Arthur J. Decio*

Jerry Hammes

Ernestine M. Raclin

Jane Warner*

Dar Wiekamp*

Honorary Life Directors

Mary Louise Miller

Carmi Murphy

Thomas Slager

**Deceased Charter Director*



A Message from Our President

Dear PBS Michiana – WNIT Investors,

Thank you for investing your time to view our programs. Thank you for investing your insight to recognize the value public television brings to our communities. Thank you for investing your resources to fund our organization. We end this fiscal year, October 1, 2020 to September 30, 2021 continuing our expansion of educational resources while improving upon a stable financial condition.

The COVID-19 crisis continued throughout this completed fiscal year. The vaccines brought a wave of optimism but variations of the virus kept us on-guard. Our kids were back in the classroom, but had lost academic ground while learning from home. PBS Michiana – WNIT adapted its “temporary” part-time at-home learning service on antenna channel 34.5 (plus many cable systems) to the full-time Michigan Learning Channel, designed to supplement classroom learning for children who may have fallen behind in their studies during remote instruction. This channel, created by a coalition of Michigan public television stations is funded by the Michigan Department of Education. Since PBS Michiana – WNIT serves counties in Southwest Michigan, we were able to become an affiliate of the MLC. Made for Michigan, but useful for Indiana viewers as well, MLC Michiana – WNIT5 is now a permanent addition on antenna channel 34.5 and most cable systems.

During the period of time when most school children were learning from home, the lack of broadband internet availability to rural and low-income households became a critical issue. Without broadband, it is difficult to transmit lessons to students due to the size of their “files.” This creates inequities in education. PBS Michiana – WNIT began installing an inexpensive way to reach these non-broadband homes using our television signal. We reserved a portion of our bandwidth for educational “datacasting.” The same information being sent by broadband can also be inserted in our television broadcast signal. A student in a non-broadband home then receives our signal through a standard antenna which is connected to a special TV tuner which can send the data to the student’s computer. The system is “addressable” by student. There’s no question that broadband is better, but this is one-way PBS Michiana – WNIT can help bridge that gap until all students have access to full broadband internet service.

PBS Michiana – WNIT took some baby-steps toward the eventual migration to a new broadcast transmission format called NextGen TV to consumers and ATSC 3.0 to those inside the industry. NextGen promises improved video and audio, better reception from a home antenna, and mobile reception on portable devices. We will be able to carry additional channels and have other data-based services. Our step this past year was to purchase a new microwave system capable of sending our data-rich signal from our studio to our transmitter. We now have several pieces in place. Many larger markets already have stations broadcasting in the NextGen TV format. If you are purchasing a new TV, consider one with the upgrade already built in. This change is coming in the next year or two.

Our emphasis on local programming did not wane this past fiscal year, despite the virus creating a number of roadblocks. Our full slate of weekly local programs continued production, although most interviews normally recorded in the studio were conducted by Zoom. Several special documentaries were produced which included: Legends of Michiana-The Martin Family, three installments of our Women in Leadership series, a local companion documentary to the national The Black Church-This is Our Story, This is Our Song, South Bend Parks-Reconnecting a Community, and Then, Now and Always...The St. Joseph River Story.

PBS Michiana – WNIT enjoys collaborating with other community organizations and broadcast programs independently produced by the IU-South Bend Raclin School of the Arts, South Bend Symphony, Andrews University, Goshen College, Southhold Dance Company and the Elkhart County Symphony.

Always seeking fresh programming, we acquired the weekly mystery drama, Frankie Drake Mysteries, which is produced by the CBC - Canadian Broadcasting Corporation.

We began “live streaming” to viewers our primary 34.1 channel and we now appear on the YouTube TV internet TV service (“Virtual Multichannel Video Program Distribution service vMVPD”).

All this local production, program acquisition, and new technology services are possible only through financial support. Our revenue is divided, almost evenly, into thirds represented by individual gifts and grants, program underwriting (sponsorships), and grants from federal and state governments.

We are grateful that individual giving and foundation grants have grown last fiscal year. Program underwriting is slightly down reflecting the uncertainty of the business climate, and grants from governments were bolstered by a nearly half-million dollar “Stabilization Grant” awarded through the Corporation for Public Broadcasting (CPB). Along with strong cost controls, including a delay in filling some vacant positions, these revenue outcomes created a strong end-of-year financial position for us.

We anticipated the COVID-19 crisis would be over by the end of 2021. Clearly it is not. PBS Michiana – WNIT remains at the ready to assist school systems with at-home learning programming and its educational datacasting service. We continue to be cautious with our budgets going into Fiscal Year 2022, especially as we face a major building repair.

Public television remains a strong voice in the greater Michiana region. Grounded in education and seeking to connect communities to achieve our full potential. While we will always will face financial and technical challenges to “operate”, our primary focus remains on our core values and achieving our mission.

We present this report of our performance in Fiscal Year 2021 for your review. Your personal investment in PBS Michiana – WNIT is greatly valued.

Sincerely,



Greg Giczi
President & General Manager

Mission

WNIT is a trusted, community owned, public media source that is dedicated to inspire, inform, educate, entertain and unify the communities we serve.

Our Stations



Our Local Programs



WNIT is Michiana's PBS Station

Serving 22 counties in northern Indiana and southwest lower Michigan



WNIT is Michiana's Largest Classroom



PBS aims at making a powerful difference in the lives of America's children through high-quality, educational content that addresses essential skills needed for child development.

PBS Nationally

- PBS Kids is the #1 education media brand for children
- PBS is the #1 source of media content for pre-school teachers
- Kids who watched "Super Why!" scored 46% higher on standardized tests than those who did not
- Kids who played the "Martha Speaks" app for two weeks had a 31% gain in vocabulary tested

WNIT Locally

- WNIT supplies activity books and other education materials to parents and families throughout the region.
- WNIT works with Ready to Grow St. Joe, Great Start Collaboratives, United Way early childhood programs, Head Start and more to support early childhood education.
- The WNIT Kids Club and its 200+ members and parents keep learning and fun alive all year long with local events, celebrations and more!
- WNIT staff members attend the Elkhart County "Success by Six" Early Childhood Summit in Goshen to learn h the latest in early childhood development training and share PBS Learning with those in attendance.



Michiana
wnit 3



WNIT is a Leader in Arts and Cultural Programming

Arts and culture create a vibrant, flourishing community.

PBS regularly brings its viewers such programs as *Masterpiece*, *Victoria*, *American Masters*, *PBS Fall Arts Festival*, *Great Performances* and countless others that feed our souls and revitalize our spirits.

WNIT Public Television produces 6 programs with a local feel on a regular basis; *Dinner & a Book*, *Education Counts Michiana*, *Outdoor Elements*, *Economic Outlook*, *Politically Speaking* and *Experience Michiana!*

WNIT Local Documentaries



Our Town Series

- Goshen (2010)
- Warsaw – Winona Lake (2011)
- Mishawaka (2012)
- Elkhart (2013)
- Dowagiac (2014)
- South Bend (2015)
- North Webster (2016)
- Niles (2016)
- Plymouth (2016)
- Syracuse (2017)
- Buchanan (2017)
- Benton Harbor (2017)
- St. Joseph (2017)
- Nappanee (2018)
- Culver (2018)
- Berrien Springs (2019)

Legends of Michiana Series

- Kurt Simon (2012)
- Ernestine Raclin (2013)
- Art Decio (2015)
- Congregation of Holy Cross (2015)
- Dane Miller (2016)
- Merlin Hanson (2016)
- Tsung Yeh (2016)
- Judd Leighton (2017)
- Bob Bartels (2017)
- Satish Shah (2018)
- Rebecca and Michael Kubacki (2018)
- Jerry Hammes (2018)
- Mike Leep (2018)
- Joe Kernan (2019)
- Pat Moody (2019)
- Virginia and Richmond Calvin (2020)
- The Martin Family (2020)

WNIT Weekly Local Productions

WNIT remains dedicated to inspire, educate, entertain, and unify the communities we serve. Our vision is to foster enlightenment in our community anytime, every time and everywhere!



Dinner & A Book

From the bookshelf to the kitchen, host Gail Martin and guest hosts discuss an eclectic collection of literature while whipping up the right recipes to go along with a great read.



Economic Outlook

Economic Outlook discusses economic growth, the impact of education on economic development, key industry sectors, the impact of trade on employment, and a host of related issues.



EducationCounts_Michiana

EducationCounts_Michiana explores learning across our region, and will look at innovative instructional and developmental techniques in the 21st Century.



Experience Michiana

Experience Michiana features all things Michiana, including arts, performers, musicians, cooking, civic engagements and business leaders as we interview newsmakers from around the region.



Outdoor Elements

Outdoor Elements takes you through some of the most beautiful and interesting parks and natural spaces across our region.



Politically Speaking

For over 20 years, *Politically Speaking* has been connecting viewers to the local, state and federal legislators they elected. *Politically Speaking* provides northern Indiana and southwestern Michigan viewers a chance to dial or click in and chat with their elected officials one on one.

FY2021 WNIT Local Productions & Documentaries



Legends of Michiana: The Martin Family

Aired On
December 13, 2020 at 8pm
December 14, 2020 at 9pm (34.2)
December 17, 2020 at 10pm

WNIT took an in-depth look into the life of NIBCO founders and philanthropists, the Martin Family.



Covid-19 Mental Health And Wellness: Kids and Youth

Aired On
April 29th, 2021 at 7:30pm (34.1)
The program focused specifically on the mental health aspect and what children have gone through, are going through and how they move forward with school and socialization.



Women in Leadership: Entrepreneurs

Aired On
March 4, 2021 at 7:30pm
Re-aired March 21, 2021 at 6pm
The first episode of Women in Leadership focused on entrepreneurs in Michiana. All three of the women featured saw a problem and were able to use their unique perspectives and experiences to create solutions.



Women in Leadership: Legal

Aired On
June 30, 2021 at 7:30pm
Re-aired July 1, 2021 at 8:30pm on 34.2
The second installment of Women in Leadership focused on women involved in the legal field and who work towards making positive and lasting changes in the Michiana area.



South Bend Parks: Reconnecting a Community

Aired On
July 1, 2021 at 7pm
July 3, 2021 at 4pm
South Bend Parks: Reconnecting a Community showcased some of the changes that have taken place in the South Bend Parks and how it's success was only possible through the involvement of many in the community.



Then, Now and Always . . . The St. Joseph River Story

Aired On
Sept 9, 2021 at 8pm
Sept 10 at 10pm
Throughout its history, the St. Joseph River has always attracted and sustained life. From furs and food to transportation, power, and recreation, the river serves a central role in the lives of those who call its banks home. PBS Michiana - WNIT told the story of the St. Joseph River, including the people, history, and life along this storied river from Hillsdale to Lake Michigan.

WNIT Provides Proactive Community Engagement



Michiana
wnit 3

WNIT launched the PBS Kids 24/7 Channel on WNIT (34.3) on June 24, 2019, giving the children in the Michiana area free, 24/7 educational programming to help combat the high percentage of children that do not have access to high-quality preschool education.



June 1, 2021 we joined the other public television stations serving Michigan communities in airing the Michigan Learning Channel (MLC), which was launched this year to deliver instructional content and programming to students, parents and teachers, developed in partnership with leading educators and community leaders. It is also available at MichiganLearning.org as a livestream and posted for on-demand viewing on a variety of digital and social media platforms.

The Michigan Learning Channel replaces the temporary At-Home-Learning channel, which WNIT had been broadcasting on channel 34.5 since the beginning of the pandemic.

WNIT Prides Itself in Civic Engagement



Connecting Michiana's citizens to their government is a primary mission of WNIT. From the local level to the federal, WNIT has provided a forum where elected officials can go beyond sound bites in discussing policy and citizens can express their concerns directly to their representatives.



WNIT is contracted by St. Joseph County and the cities of South Bend and Mishawaka to produce Michiana Access Television on Comcast Cable and AT&T U-Verse. In this venture, WNIT provides the facilities and personnel needed for private individuals to broadcast, at no charge, their own public access television shows. This channel also broadcasts council meetings and other events for South Bend, Mishawaka and St. Joseph County. MATV can be found on channel 99 on both cable systems.

PBS Kids Channel on WNIT

Launched in June 2019 through the support and generous contributions of the “Friends of the Neighborhood” listed to the right, the PBS Kids 24/7 Channel is now the most viewed children’s programming in the market. This is impactful, because PBS Kids programming is all curriculum-based, educational programming focusing in the key areas of literacy, STEM (science, technology, engineering and math) and social & emotional development. All the programming is age-specific and follows curriculum guidelines.



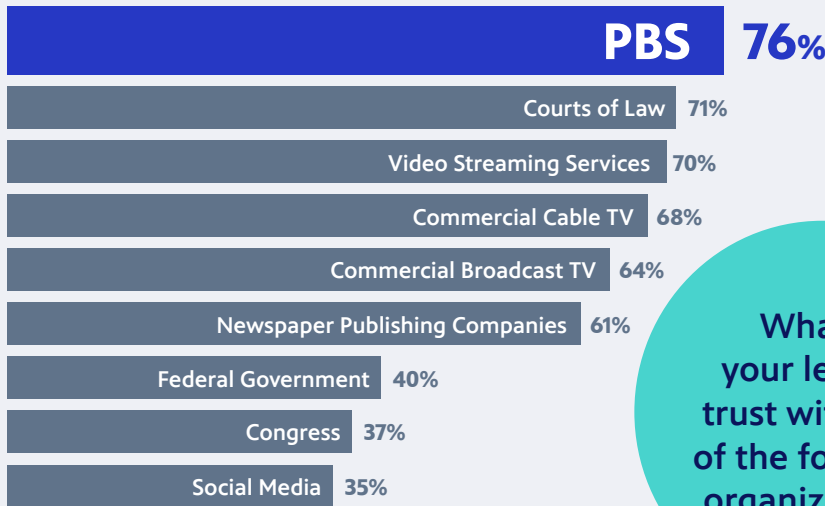
Friends of the Neighborhood



PAT AND SUE RUSZKOWSKI/CARLETON, INC.
ARTHUR J. DECIO
ANONYMOUS
COMMUNITY FOUNDATION OF ELKHART COUNTY
DAVID AND BILLIE BANKOFF
BARBARA WIND
DON AND JOAN LYONS/LYONS INDUSTRIES
JAMES AND CHRISTINE KELLY
MIKE AND KAREN LEEP
JOHN AND BARB PHAIR
BILL AND LORRIE SCHMUHL
HILLMAN FAMILY FOUNDATION
ANNE HILLMAN
FLORENCE V. CARROLL CHARITABLE TRUST
DAVE AND GINNY GIBSON/GIBSON FOUNDATION
REBECCA AND MIKE KUBACKI
ERNESTINE RACLIN
HARI AND SEEMA AGARWAL
TIM AND KATY DEMAIRIS
MIKE KELBEL
KEVIN AND MARIJO KELLY
HAYES FAMILY FOUNDATION
KATHY BEELER AND BRIAN REGAN
GREG AND MARY BETH GICZI
JOHN W. ROSENTHAL
GREAT-GRANDKIDS OF
ERNESTINE RACLIN
&
GRANDKIDS OF
CHRIS AND CARMİ MURPHY

STATE OF INDIANA
FREDERICK S. UPTON FOUNDATION
BOWSHER BOOHER FOUNDATION
AMERICAN ELECTRIC POWER FOUNDATION
A BEQUEST, IN MEMORY OF MARY JANE KUNTZ ERIE,
FROM THE PATRICIA L. OHANLON-HANDSHAW TRUST
IN LASTING MEMORY OF THOMAS H. CORSON

For 18 years,
PBS is #1 in public trust.



What is your level of trust with each of the following organizations?

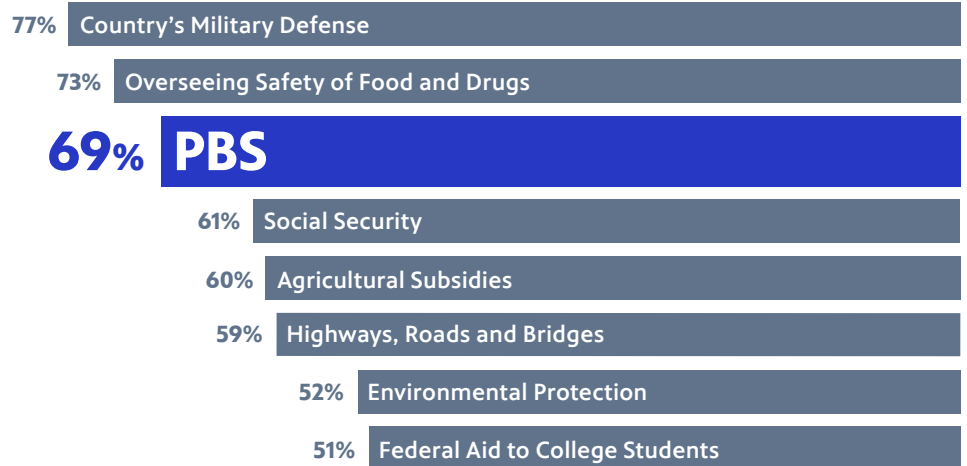


PBS ranked most trusted news and public affairs network.

Graph indicates "agree strongly" and "agree somewhat."

PBS provides high value for tax dollars.

Rate the value of these taxpayer-funded services provided by the Federal Government.



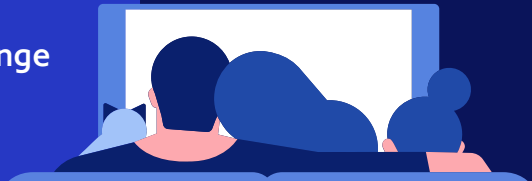
Graph indicates "excellent" and "good."

74%
 Believe PBS content appeals to people of different ethnic backgrounds.

70%
 Believe PBS does a good job of representing people of color in its content.

74%
 Believe PBS features a diverse range of people.

71% Believe PBS is in touch with today's culture.

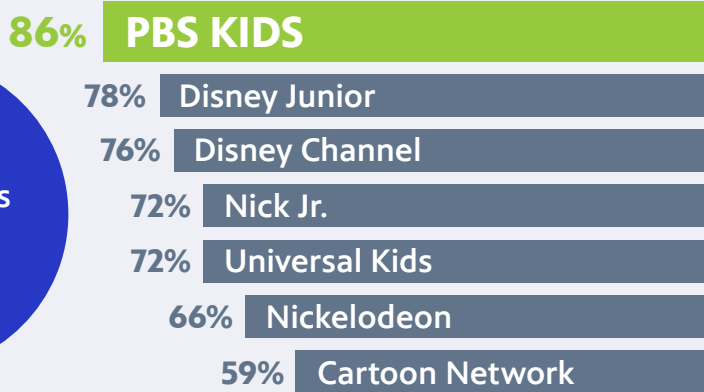


Parents say PBS KIDS

Helps prepare children for success in school.



Which network best prepares children for success in school?

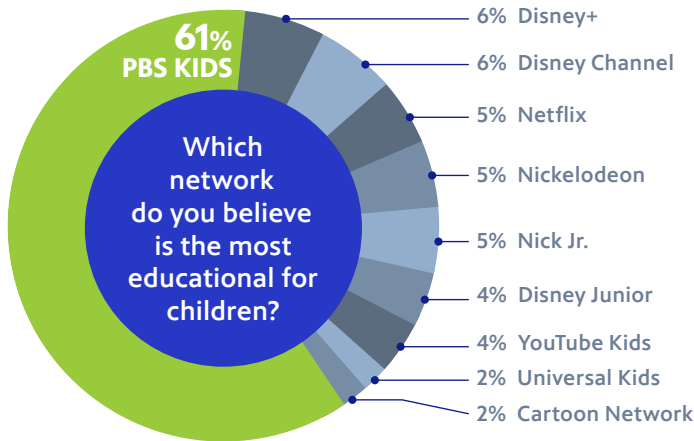


Graph indicates "agree strongly" and "agree somewhat."



PBS KIDS rates

Most educational media brand.



PBS KIDS is a trusted and safe source for kids to watch television and play digital games and apps.

PBS stations reach more children, and more moms of young children, in low-income homes than any children's TV network.

(Source: Nielsen NPOWER, 9/23/2019 - 9/20/2020, L+7 M-Su 6A-6A TP reach, 50% unif., 1+min., K2-11 in HH w/Inc <\$25K, LOH18-49 in HH w/Inc<25K, PBS stations, children's cable networks.)

PBS stations reach more Hispanic, Black, Asian American, and Native American children ages 2-8 than any of the children's TV networks.

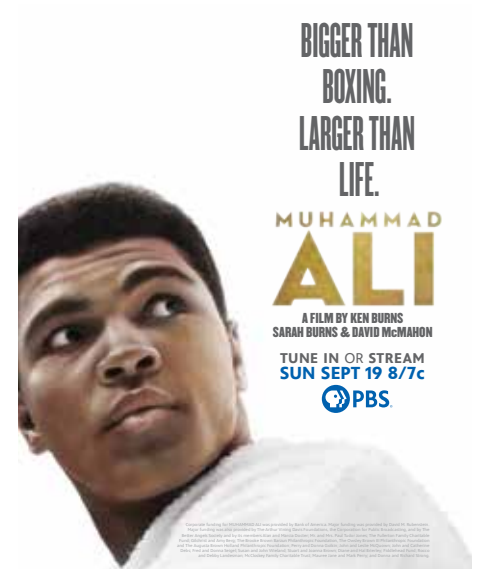
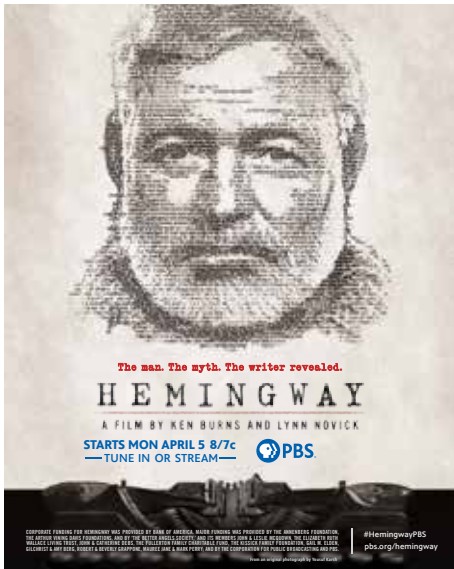
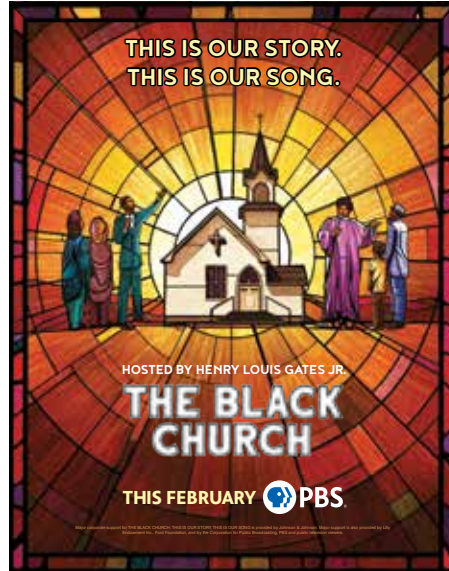
(Source: Nielsen NPOWER, 9/23/2019 - 9/20/2020, L+7 M-Su 6A-6A TP reach, K2-8, 50% unif., 1+min., K2-8 Hispanic, Black, Asian/Pacific Islander, American/Alaskan Native. All PBS Stations, children's cable TV networks.)

PBS KIDS averages 13.6 million monthly users and 359 million monthly streams across PBS digital platforms.

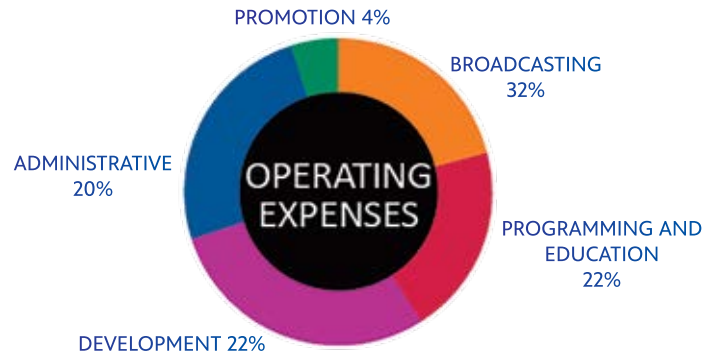
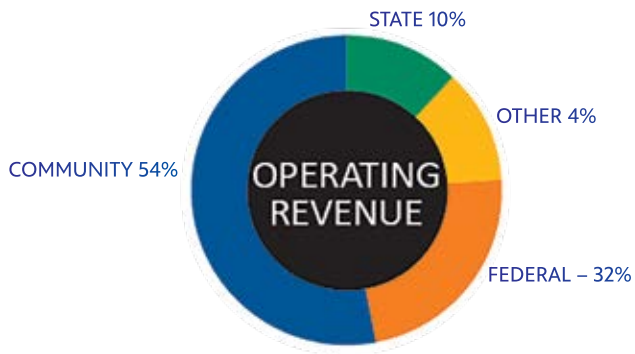
(Source: Google Analytics Oct '19 - Sep '20)



2021 Season's Best New Programs



SUMMARIZED STATEMENT OF ACTIVITIES FY2021



Federal	\$1,376,356
State	439,853
Community	2,351,211
Other	187,668
Total Operating Revenue	<u>\$4,355,088</u>

Broadcasting	\$1,255,235
Programming & Education	873,849
Development	867,212
Administrative	769,317
Promotion	166,006
Total Operating Expenses	<u>\$3,931,619</u>

Included in Operating Expenses is a non-cash charge for depreciation of \$300,172 in FY2021 and \$571,185 in FY2020.

SUMMARIZED STATEMENT OF FINANCIAL POSITION

	FY2021	FY2020
Current Assets	\$1,692,471	\$1,231,789
Property and Equipment	4,964,730	5,167,566
Total Assets	<u>\$6,657,201</u>	<u>\$6,399,355</u>
Current Liabilities	\$1,005,309	\$1,497,786
Non-Current Liabilities	1,586,251	1,670,382
Net Assets	<u>4,065,641</u>	<u>3,231,187</u>
Total Liabilities & Net Assets	<u>\$6,657,201</u>	<u>\$6,399,355</u>

WNIT received an unmodified (i.e. "clean") opinion on its Fiscal Year 2021 and 2020 financial statements. To view a copy of the audited financial statements, please see the Public Information tab under the "About" section of wnit.org or contact WNIT's Administration at 574-675-9648 or email WNIT@wnit.org.

\$100,000 donation to provide free 24/7 children's educational programming on WNIT-TV PBS Kids

Powering the Next Generation

"We want to empower families and children with free access to shows and educational activities that coincide with what they are learning at school. The funding from this donation will help keep WNIT as Michiana's largest classroom."

— Greg Giczi
President and General Manager, PBS Michiana

I&M Announces AEP Foundation Grant Powering the Next Generation in Northern Indiana and Southwest Michigan with \$100,000 donation to WNIT-TV (PBS Michiana)



The PBS KIDS 24/7 channel enables children and families in Northern Indiana and Southwest Michigan to watch educational programming during evenings and on weekends, when they are most likely to watch television. The American Electric Power Foundation (AEP Foundation), on behalf of Indiana Michigan Power (I&M), will be Powering the Next Generation with a \$100,000 donation to help fund the PBS KIDS 24/7 channel.

The donation will support marketing, promotion and educational outreach to parents, teachers and families, sharing the value of curriculum-based educational PBS KIDS programming. PBS KIDS programming helps strengthen children's communication, critical thinking, math and literacy skills while improving school readiness.

"There was a critical need for free, 24/7 curriculum-based programming for children that WNIT has been trying to fill for years. In 2019, we launched the 24/7 channel. The AEP Foundation and Indiana Michigan Power are making it possible for us to increase our outreach and awareness efforts to ensure every child has access to this resource," said Greg Giczi, president and general manager of WNIT (PBS Michiana). "We want to empower families and children with free access to shows and educational activities that coincide with what they are learning at school. The funding from this donation will help keep WNIT as Michiana's largest classroom."

WNIT continues to serve families in Northern Indiana and Southwest Michigan, which it has done for more than 50 years. The PBS KIDS

24/7 channel is available to nearly 130,000 children ages 2 - 8 in a 22 county area, including portions of I&M's service territory where more than 80,000 of those children live and learn. However, the audience for PBS KIDS goes well beyond children. According to WNIT, television is one of the top ways families spend time together with 89% of parents reporting they watch TV together to support learning at home.

"The 24/7 PBS KIDS channel encourages innovation, creativity and sparks educational opportunities for Indiana Michigan Power's youngest customers," said Katie Davis, vice president of external affairs and customer experience. "The American Electric Power Foundation and I&M believe education is the foundation to providing brighter futures for our communities. The 24/7 PBS KIDS channel will help thousands of families support their children's education in a safe, fun and encouraging environment."

Families can access educational programming, like "Super Why" and "Daniel Tiger's Neighborhood", and educational games on multiple platforms. The PBS KIDS video app offers a first-of-its-kind integrated games feature. Children can go back-and-forth between a PBS KIDS show and games/activities that extend learning opportunities.

I&M encourages local businesses, non-profits and Michiana residents to support WNIT. For more information, please visit wnit.org/support.



PLANNED GIVING

LEAVE A LASTING LEGACY

There are many different legacy gifts of any size, that will make a lasting impact on WNIT and our mission. Speak with your attorney or financial professional to see which option makes the most sense for your plans. Below are several ways to support public television now and in the future.

AN OUTRIGHT GIFT OF CASH

An outright gift of cash is simple, and one of the most popular methods of giving. An immediate gift offers a charitable tax deduction, and a gift through your will may allow your estate to claim a tax deduction.

PUBLICLY TRADED STOCK

A gift of stock can provide attractive tax savings, often at a value higher than what you paid for it. You can also avoid capital gains tax when you donate, rather than sell, appreciated stock.

RETIREMENT PLANS

If you designate WNIT as a beneficiary of your IRA, 401(k), or 403(b), you will know that every dollar will be used for a charitable purpose and shielded from income or estate taxes. (Unless donated to charity, accounts funded with pre-tax earnings like retirement accounts - are often subject to both income and estate taxes.

LIFE INSURANCE POLICIES

If you give outright and complete ownership of a partially or fully paid life insurance policy to a charitable organization, you can claim an immediate tax deduction. You may also name WNIT as a primary or contingent beneficiary of a new or existing policy.

PERSONAL PROPERTY

A gift of tangible personal property can include items such as jewelry, artwork, antiques, vehicles, and other physical objects. Donating personal property also entitles you to a charitable tax deduction, which is maximized when you donate property that: has increased in value since the time you've acquired it; you have owned for more than one year; and the property's use is related to the purpose and work of the station.

REAL ESTATE

A gift of real estate—which may be land, a personal residence, a vacation home, or rental property—can offer the opportunity to make a large planned gift, to avoid income and estate taxes, and to minimize the burdens placed on your loved ones. WNIT accepts outright gifts of real estate and gifts made in a will, trust, or estate plan.

IRA ACCOUNTS

A special message to those who are 70 and older. It is once again possible to make tax-favored charitable gifts from traditional and Roth IRA accounts. To make such gifts, it is important to not withdraw funds prior to a gift, but have the gift amounts distributed directly from an IRA to the qualified charities. For those with check writing privileges on their accounts, this may be the most efficient way to make gifts directly from an IRA. For more information, contact your IRA administrator or tax advisor.

UNDERWRITERS

\$25,000 +

1st Source Bank
Dr. Dane and Mary Louise Miller Foundation

\$15,000 - \$24,999

Bill and Kristin Fenech Family /
Barletta Boat Co.
Gurley Leep Automotive Family
Indiana Public Broadcasting Stations
Logan Community Resources
Miller Poultry
NIPSCO / NiSource
Pamela and Robby Rask
Rex & Alice A. Martin Foundation
South Bend Civic Theatre*
South Bend Clinic
South Bend Cubs*
St. Joseph County Health Department
University of Notre Dame

\$10,000-\$14,999

Alick's Home Medical
BellTower Health & Rehabilitation
Crown and Kunkler Family
Linda and Bipin Doshi
Goodwill Industries
Mel Hall
Indiana Trust Wealth Management
Indiana University South Bend
Ironhand Wine and Bar*
Lake City Bank
Chris and Carmi Murphy
Pfeifer, Morgan & Stesiak
Barb and John Phair / Holladay Properties
South Bend Community School
Corporation*
South Bend Symphony Orchestra*
St. Clair's Butcher Shoppe and Delicatessen
Teachers Credit Union
Janet and Larry Thompson
Tri-State Maintenance*
WVPE Public Radio*

1,000-\$9,999

100 Black Men of Greater South Bend
1st Source Foundation
32 Pearls Family Dentistry
AEP - Indiana Michigan Power
Jeannine and Nafe Alick, Sr.
AM General
Anderson, Agostino & Keller, P.C.
Art Barn School of Art*
Barnes & Thornburg, LLP
Rob Bartels
Berrien Springs Public Schools
Bill's Collision Service
Boling Vision Center
Café Navarre (Navarre Hospitality Group)
Center for Hospice Care
Center for the Homeless*
Century Custom Builders
Community Foundation of Elkhart County
Cosimo & Susie's A Bit of Italy
Crossroads United Way of Elkhart,
LaGrange and Noble Counties
CTE Solutions
D & W Inc.
Ann and Fred Dean
Drive & Shine
Early Childhood Development Center, Inc.
Elizabeth and Thomas Eisele
Elephant's Trunk
Elkhart & St. Joe Counties Head Start
Consortium
Elkhart Child Development Center
Elkhart Civic Theatre*
Elkhart County Symphony Orchestra*
Elkhart Public Library
Elkhart Steel Services, Inc.
Dr. Michael Feltman
First Federal Savings Bank
Fischhoff National Chamber Music
Association*
Foegley Landscape, Inc.
Foley and Small
Joyce and Roger Foley

UNDERWRITERS

Foot Solutions
Friends of the St. Joe River Association
Gary Davis & Associates Attorney, P.C.
Gibson
Gwen and John Gildea
Gymnastics Michiana
Hayes Towers
Holy Cross Village at Notre Dame
Homan Lumber Mart
Hospice Foundation
INOVA Federal Credit Union
IU Health Goshen Center for Cancer Care
Jewish Federation of St. Joseph Valley*
Matthew Kahn and Janine Felder-Kahn
Kelly Cares Foundation
Kruggel Lawton CPAs
Nancy and Jim Krzyzewski
LunaFest Michiana*
Lush Lighting
Philip G. and Jeanette Lux
Marcus Realty
Marshall County Tourism
Michiana Antique Mall
Michigan Gateway Community Foundation
Midland Engineering Co.*
Anne and Sam Milligan
Mishawaka Furniture
Morningview Assisted Living Residences
Mary E. Naquin
Nemeth, Feeney, Masters & Campiti, P.C.
Notre Dame Federal Credit Union
Oaklawn Hospital
Omicron Biochemicals Inc.
Peacock & Company
PNC Bank
Potawatomi Zoological Society*
Rieth-Riley Construction
River Bend Hose Specialty
River St. Joe
Saint Joseph Health System
Senior1Care and Legacy CNA Training
Sew Creative Threads
Amy and Amish Shah

Lynda Simon
South Bend Children's Dentistry
South Bend Elkhart Audubon Society
South Bend Museum of Art
St. Joseph County Public Library
Stifel - The Elkhart Group
Stitch 'N Time Fabrics
Studebaker National Museum*
The Cascade Riverfront Development
The Cressy Foundation
The Jordanich Group
The Judd Leighton Foundation
The Music Village
Tire Rack
Tuesley, Hall, Konopa LLP
United Way of Saint Joseph County*
United Way of Southwest Michigan
Upper St. Joe River Rats, Inc.
Van Horne Jewelers
Visit South Bend Mishawaka*
Wagon Wheel Center for the Arts*
We Impact Group
Welter Foundation
Zimmer Biomet

*In Kind

DIRECTORS' CIRCLE

Diamond Level (\$10,000 +)

Hari and Seema Agarwal
Community Foundation of Elkhart County
Estate of Jack and Shirley Appleton
Billie and David Bankoff
Arthur J. Decio*
Florence V. Carroll Charitable Trust
The Garcia Family Charitable Foundation
Frank Greene
Mrs. Sue Hiler
Anne Hillman**
James and Jill Hillman
James and Christine Kelly
Michael and Karen Leap
Don and Joan Lyons
Barb and John Phair
Ernestine M. Raclin
Robby and Pamela Rask
Pat and Sue Ruskowski
Lorrie and Bill Schmuhl
James F. Shea
Craig D. Sullivan and Cynthia L. Harris
Sonny* and Dee Tepe
Janet and Larry Thompson
Barbara Wind
Wen and Susan Wu

Platinum Level (\$5,000 +)

Edward L. Carrico
Katy and Tim Demarais
Bipin and Linda Doshi
Roger and Joyce Foley
Dave and Ginny Gibson
Howard and Marie Goodhew Fund of the Community
Foundation of St. Joseph County
Brian and Melinda Inniger
Mike and Dianne Kelbel
Marijo and Kevin Kelly
Ralph Komasinski and Katherine Humphreys
Michael and Rebecca Kubacki
William and Marna Mateer
Chris and Carmi Murphy
Gerald H. Shaffer
Thomas F. and Anita J. Veldman
Welter Foundation

Gold Level (\$2,500 +)

Anonymous (2)
Richard and Jean Dennen
Mr and Mrs Robert Elick
Mary Beth and Greg Giczi
James W. and Sally F. Hubbard
Glenn and Patty Killoren
Sara and Abraham Marcus
Perry and Ida Reynolds Watson III
Susan Ohmer and Donald Crafton
Jeff and RaeLee Rea
Nancy and Richard Saunders
Barbara Williams
John D. and Carol Zeglis

Silver Level (\$1,000 +)

Shirley M. Anderson
Anonymous (3)
Bruce and Linda Bancroft
Dr. James and Carolyn Barnes
Rick and Cindy Beckermeyer

Kathy Malone Beeler
George and Janice Beutter
Jo Ann and Joe Blazek
Kimberley D. Bow Sundy
Janette Burkhart-Miller
Julie and Thomas Brenner
Jack and Karen Cittadine
Peg Claeys
Barbara Clausen
Marianne Corr
Monali Das
Ann and Fred Dean
Barbara Dillon
Fred and Mary Jane Ferlic
Tom and Susan Fischbach
Tony Fitts and Ramona Payne
Martha Foreman
Stephen and Barbara Fredman
Jody and Mike Freid
Mrs. L. Craig Fulmer
Rodney and Carol Ganey
Van and Jean Gates
Gates Fund of the Community Foundation
of St. Joseph County
William and Leslie Gitlin
Maggie and Steve Goldberg
Dan Hektor and Tela Schulman-Hektor
Steven and Ann Herendeen
Linda Higbee
Mary Suzanne Horan
Dr. and Mrs. Tom Hughes
Interstate Asphalt
Nancy Johnson
Carol and Craig Kapson
Bob and Pat Kill
Trevor and Kim Kubatzke
Richard Lamanna
Drs. Gail English and Nels Leininger
John Lloyd
Jill Long Thompson
Mr. and Mrs. Philip Lux
Arlene Mark
Chris Maziar
Dr. Debra and Rodney McClain
Judith McDowell
Max and Lydia Mertz
William and Linda Meyer
Jane K. Miller
Robert Mitsch
Dr. and Mrs. Brian Moloney
Pat and Carol Moody
Neil and Diane Orians
Sue and Philip Panzica
Gerard and Katie Parent
Michael and Amy Phend
Dr. Yupadi Prasertwanitch
Donna and Mark Richter
The Honorable James W. Rieckhoff
Charles Rizzo
Judith Robert and Thomas J. Kapacinskas
June Rollinger
Steve and Connie Rufenbarger
The Paul Saltzgaber Memorial Fund
for Reading, Writing and the Arts
Kenton and Sally Schreck
Cari and Barry Shein
James and Patricia Short

DIRECTORS' CIRCLE

Tom and Maria Slager
James F. and Sherry L. Smith
Robert and Christine Smith
Eve Sobol
William and Jennifer Squiers
Carolyn Stacik
Perry Stow and Andrea Mather-Stow
Lawrence Szymanski
Patricia Taplick and Dan Groteke
Susan Vanek
Mike and Dena Wargo
Peggy Weed
Patrick and Jeannie Welch
Phid and Jeff Wells
Noel D. Wycliff

Bronze Level (\$500 +)

Louise and Stephen Anella
Anonymous (8)
Dottie and Tom Arnold
James and Lauren Arnold
Reginald F. Bain
Stuart and Paula Barb
Robert and Pam Beam
Tania Bengtsson
John and Denise Berscheit
Donna and Brad Beutter
Nancy Binder
Hayley Boling
Elizabeth Naquin Borger
Brian and Kelly Bowen
Brian and Jeannelle Brady
George and Martha Buckingham
Ruth Budd
George and Patricia Burgoyne
Peter and Chasten Buttigieg
Terri Calkins
Edward and Carla Chester
Joseph and Linda Christophel
Geoff and Kathie Church
Frank and Patricia Criniti
Julia A. Crume
Mary Pat and Robert Deputy
Candy Discavage
Ann and Paul Divine
Robin and Lisa Douglass
Greg and Mary Downes
Joel and Amy Duthie
Thomas and Elizabeth Eisele
Jill and Chris Erb
Diane Eskridge
Susan and David Findlay
John Fischer
James Fisko
George and Kathy Freese
Timothy and Katherine Fulnecky
Steven and Susan Funk
Lynn Groenleer
Lowell and Judy Hamel
Edward and Joan Hardig
Janice and Larry Harding
Deborah Harris
Sharee and Frank Hartman
Charles S. Hayes
Jennifer and Frederick Helmen
Paul and Christie Helquist
Bruce Heustis and Marcia LeMay

Jane Hoffman
Michael and Janice Imgrund
Robert and Judith Jochem
Rowan Kelley and Amanda Miller Kelley
Maggie Kernan
Charles and Gretchen Kimble Fund
Richard and Susan Klepinger
Stephen and Hillary Lagattuta
Brian and Ginger Lake
Betty Laramore
Robert Lerch
Rebecca Levack
Timothy and Sue Liddell
Jeanne Liechty and Michael Dickens
Ann and Gary Linley
Lyla Lockhart
Grace and Robert Lotter
Jason and Kirsten Marker
William A. Mashke
Donald O. Maylath
Laurence and Barbara McHugh
Joann and Brian McMahan
Stephen and Connie McTigue
Shari and Tom Mellin
Brad and Mickey Miller
Anila and James Mondabaugh
Kevin and Anita Morrison
Mary Naquin
Mark and Kathleen Neal
John and Janice O'Leary
Kent and Katherine Perry
Michael and Susan Pound
Garry Rawlings
Marjorie and Victor Riemenschneider
Rieth-Riley Construction Co., Inc.
Rachel Ridley
Gene Rogers
Jean Rogers
Marty and Maddie Root
David and Mitzi Sabato
Dr. William and Diane Sarnat
Judy and Bob Schmuhl
Byron and Eloise Smith
Jennifer and Mark Smith
Ellyn Stecker and Peter Smith
Mark and Vicki Smucker
Tom and Joyce Sopko
Richard Stoldt and Deborah Martin-Stoldt
Rebecca Stoltzfus and Kevin Miller
George and Barbara Stump
Barbara Warner**
Charles and Mary Weber
Wendzonka, Cynthia
Robert F. Werner Jr. and Kathleen A. Werner
Dorothy and Dar Wiekamp*
Martyn and Kathleen Wills
Marcus Winchester
Jody Wiseman
Nancy Wuthrich
Michael and Julie Yates
Douglas and Janette Yoder
Kenneth E. Yoder
Linda Yoder

*Deceased Charter Director

** Deceased

Michiana Public Media wnit



300 West Jefferson Blvd • South Bend, IN 46601
POBox 7034 • South Bend, IN 46634-7034 574.675.9648 • fax 574.289.3441
wnit.org

WNIT is owned and operated by the Michiana Public Broadcasting Corporation,
a non-profit corporation in the State of Indiana.