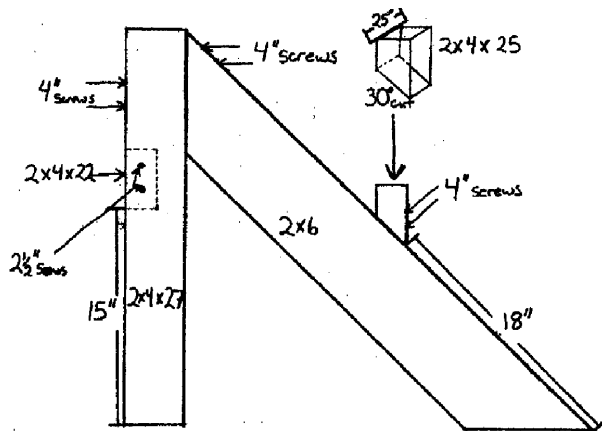
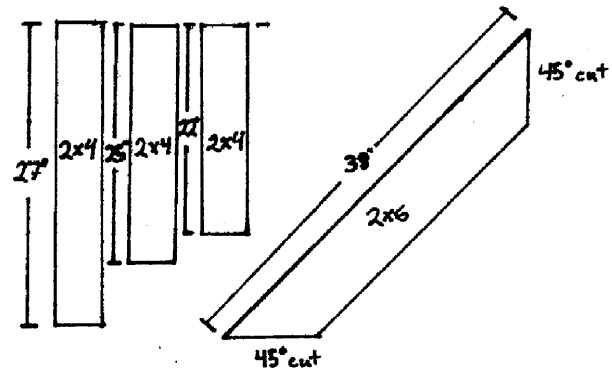


Constructing Your Own Downhill Ski Chair

1. First assemble lumber as needed (fig.1).
2. Construct the basic wooden frame (fig.2,3,4). Use treated lumber for an outside chair.
3. Assemble at least 5 pairs of old downhill skis. Remove the bindings from the skis. Most recent bindings are set down with a special screw head. A #3 phillips is not an exact fit but it will most likely do the job. Some older bindings are set down with a regular slotted screw.
4. Mark and cut (use a reciprocating saw with a metal cutting blade) a 20" section from the back end of the four sets of skis that you are using on the seat and back (fig.5).
5. Mark and cut the skis designated for the back of the ski chair. Measurements for this should be made by hooking the tape measure end on the point of the ski and measuring straight down to the ski (fig.8). *Note: For the 43-45" back pieces require a ski at least 175 cm in length.*
6. Measure and cut a 26" front section from the skis designated for the arm rests. Remember that the bottoms of these skis will be facing up so make sure to check out the bottoms to find the desired color/pattern.
7. Arrange the seat pieces in proper order onto the wooden frame. The factory finished end of the ski should hang over the 2x4x22 cross member. The cut end of the ski should be flush with the back of the 2x4x25 cross member. Use a marker of some type to mark where the guide holes for fastening the seat to the cross pieces should go (fig.7). Drill the guide holes for the seat using a 3/16" drill bit. You'll need to countersink the guide holes to make the screw heads flush with the seat surface. Lay the seat pieces back into place after guide hole drilling is complete. Screw the seat pieces into place.
8. Hold the back ski pieces into place and mark the guide holes (fig.6). It works best to alternate the 3 hole pattern shown in fig.6 to minimize the chance of splitting the 2x4x25 cross piece. Drill the guide holes with a 3/16" bit. Screw the back pieces into place with just one screw. This will allow you to move the back pieces for proper spacing. After desired spacing is complete put the remaining screws into place.
9. Hold the arm rest (upside down) onto the front leg (2x4x27) so that the cut end touches the outer back ski. Mark two holes for screws to be drilled into the top of the 2x4x27. Drill the guide holes (3/16 bit). Screw the arm rests into place. Fix the back ski to the cut end of the arm rest with a screw if desired.
10. Add any additional ski trim pieces you like to dress up and personalize your chair. Most people add a ski tip section upside down on the front of the 2x4x27 upright.
11. Sit in your chair and enjoy a refreshing drink!

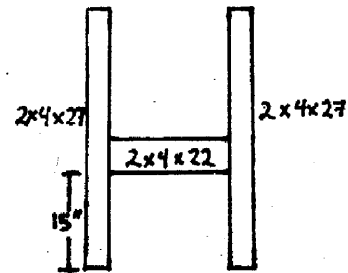
Ski Chair Frame

**cut lumber dimensions
(fig.1)**

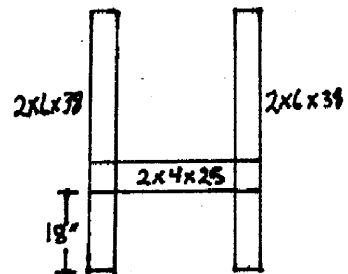


**chair frame assembly
(side view fig.2)**

**front
view
(fig.3)**



**back
view
(fig.4)**



Materials Needed:

2 front leg uprights (2x4x27)

1 front cross member (2x4x22)

2 back legs (2x6 with 45 degree angle cuts)

1 rear cross member (2x4x25 with 30 degree angle cut)

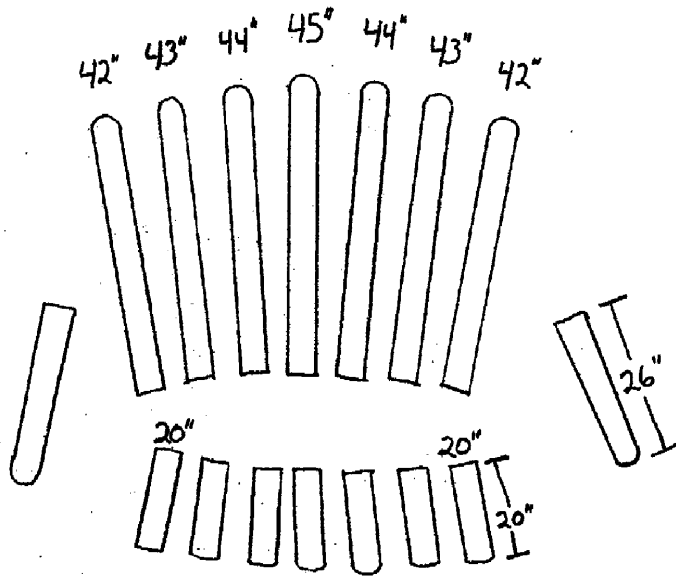
multiple 4 inch screws

multiple 2 1/2 inch screws

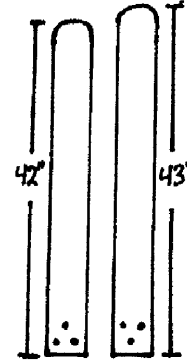
NOT DRAWN TO SCALE

Ski Chair

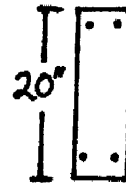
cut ski dimensions (fig.5)
chair back



chair seat



back hole placement
(fig.6)
arm rest



seat hole placement
(fig.7)

Screw seat and arms down with 1 5/8 inch screws

Screw back on with 1 5/8 inch washer head screws

(fig.8)

