

PLANNER



Michiana's bi-monthly Guide to WNIT Public Television
Issue No. 2 March – April 2013



BIG QUESTIONS

World-class conversation to keep you
informed, engaged and amazed.
Starting April 8.

**EXPERIENCE
MICHIANA
CELEBRATING ONE YEAR!**
see page 20 for details

BOARD OF DIRECTORS

CHAIR

David M. Findlay

VICE CHAIR

Rodney F. Ganey

Ida Reynolds Watson

PRESIDENT AND GENERAL MANAGER

Greg Giczi

TREASURER

Kevin J. Morrison

SECRETARY

Dr. Susan Ohmer

DIRECTORS

Thomas G. Coley, Ph.D.

Kathryn Demarais

Irene E. Eskridge

William A. Gitlin

Tracy D. Graham

Albert L. Gutierrez

Larry D. Harding

James W. Hillman

Najeeb A. Khan

Glenn E. Killoren

Paul A. Marsh

Ryan Matthys

Christine M. Maziar

Mary Louise Miller

Pat Moody

Jill Richardson

Maritza Robles

Cari Shein

Thomas E. Slager

James M. Summers

Michael J. Wargo

Patrick Welch

CHARTER DIRECTORS

Mr. Arthur J. Decio

Mr. Jerry Hammes

Mrs. Ernestine M. Raclin

Mrs. Mare Warner

Mr. Dar Wiekamp*

HONORARY LIFE DIRECTOR

Carmi Murphy

**Deceased Charter Director*

© 2013 Michiana Public Broadcasting Corporation Statement of Frequency: WNIT PUBLIC TELEVISION PLANNER (USPS 103-650 ISSN 1523-9373) is published bi-monthly by The Michiana Public Broadcasting Corporation, a non-profit corporation in the State of Indiana at 300 West Jefferson Boulevard, South Bend, IN 46601. Periodical postage paid at South Bend, IN and additional mailing offices. POSTMASTER: Send address changes to P.O. Box 7034, South Bend, IN 46634-7034. Editor: Roger Chrastil.

A MESSAGE FROM GREG GICZI President and GM, WNIT Public Television



Hello Everyone!

It is my privilege to introduce myself to you as the new President and General Manager of WNIT. While I may be new to WNIT, I'm certainly no stranger to Michiana. I was born here, attended South Bend's Washington High School and later earned a BBA degree from the University of Notre Dame. Through my work career, I've spent a great deal of time in Elkhart, Kosciusko, Berrien, Marshall and St. Joseph counties.

A good portion of my career was spent at WNDU-TV, South Bend's NBC station. I left my position there as Vice President of Operations to become the General Manager of Phoenix's great public television station, KAET ("Eight - Arizona PBS"). I believe that the combination of commercial television and public television experience is a plus I bring to WNIT.

I am so happy to return to the South Bend area and all the wonderful friends and family I left behind in the move to Arizona. My family will be joining me after the school year concludes. We didn't want to uproot my school-age children and this gives me time to really focus on my new position. You can imagine how I miss them, however, and I am looking forward to their arrival and settling into a new home.

People often ask, "Why would you move back from Arizona?" It's simple. The great weather there doesn't make up for the close relationships I have here. And, it is also because of WNIT. I don't think I would have moved for any other station. You know it yourself, Michiana has a terrific public television station!

I believe so much in the power of the television medium, and in particular the power of public media. We contribute so much to early childhood education, enrich our audiences with artistic performance, offer thoughtful documentaries for civic engagement and encourage lifelong learning for all of our viewers. On top of that, I believe WNIT is a national leader for local productions. WNIT is a great station, and Michiana deserves nothing less. You have my pledge that I will use all my energies and talent to further advance your public television station.

I have many words of "thanks" to pass along. First to Steve Funk, WNIT's Vice President of Development and Marketing, for his service as Interim Executive Director the past several months, and to the WNIT Management team for their support of him. I also thank David Findlay, Chairperson of the WNIT Board of Directors, and all the members of the Executive Search Committee for their confidence, counsel and advice, as I accepted this position. And, I can't forget the backbone of our organization, the WNIT staff which has been so welcoming. Most of all, I thank you, the viewers, donors, contributors and supporters of WNIT. Without all of you the power of public television in Michiana would not be possible.

I'm so glad to be here. I can't wait to meet you!



WHAT'S INSIDE?

Worth Watching March	4	Membership Corner	21
Worth Watching April	8	WNIT Kids Club	23
Primetime March	12	Honor Roll Members	25
Primetime April	14	WNIT Supporters	26
Weekday Programming	16	Supporter Spotlight	27
Weekend Programming	17	Directors' Circle	27
Overnight Programming	18		
Production News	20		

WNIT CHANNEL GUIDE

WNIT 34.1 ON COMCAST

Channel 191

Shown In High Definition

Channel 10

Indiana: South Bend, Mishawaka, Goshen, Bristol, Elkhart, Plymouth, Rochester, Middlebury, Jefferson Township, Wakarusa, Warsaw and eastern LaPorte County

Michigan: Edwardsburg, Niles, Buchanan, Cassopolis, Dowagiac, St. Joseph (city), Benton Harbor, Berrien Springs, Stevensville, and New Buffalo

Channel 4

Indiana: Argos, Bourbon, Bremen, Culver, Knox, Lakeville, LaPaz, Nappanee, North Judson, North Liberty, Syracuse, and Walkerton

Channel 11

Indiana: LaGrange County
Michigan: Constantine and White Pigeon

Channel 26

Indiana: LaPorte (city), western LaPorte County, Porter County and Valparaiso

WNIT 34.1 ON DISH & DIRECT SATELLITE PROVIDERS OR AT&T U-VERSE

Channel 34

Shown In High Definition

WNIT InFOCUS 34.2 ON

COMCAST

Channel 371

Shown In Standard Definition

ON THE COVER

BIG QUESTIONS

Part documentary, part talk show, *Big Questions* engages the viewer in world-class conversations about world-class issues facing all of us today. Travel with us around the world and witness progress in action through the eyes of everyday people who find themselves on the front lines addressing the world's most critical challenges.

We have found stirring and motivating stories in all kinds of places, from our backyard in the US to faraway places around the globe. The first half of season one takes the viewer to rural villages in Bangladesh, an international corporation's health care initiative in Tanzania, wage theft protests and food deserts in Chicago, and even includes a rehabilitation program in a small town Michigan correctional facility. The second half brings the viewer to a school in Haiti, a pineapple plantation in Ghana, homeless shelters in the US and Hong Kong's cage homes, a refugee hospital in Jordan, and more.

Produced by DePaul University's Institute for Business and Professional Ethics, *Big Questions* has a core audience of intelligent people who want to change the world. Viewers of *Big Questions* seek to be engaged with the world around them and are interested in seeing new environments and hearing new ideas.

Our stories are forward thinking and focus on the "tipping point" often found at the intersection of cultural need and social change. *Big Questions* is really about encouraging the audience to participate in world change, not simply speculate about it.

Big Questions premieres April 8 on WNIT at 10pm.



Big Questions

Hosted by DePaul University's (l to r) Kim Clark, Patricia Werhane and Laura Pincus Hartman

WORTH WATCHING

MARCH



Lawrence Welk Precious Memories



A 60's Pop Flashback: Hullabaloo (My Music)

All programs are on both 34.1 and 34.2 unless noted.

MARCH MEMBERSHIP PROGRAMMING

Special programming featured on these pages runs from March 1-17.

JOE BONAMASSA: AN ACOUSTIC EVENING AT THE VIENNA OPERA HOUSE

FRIDAY, MARCH 1, 8PM AND SUNDAY, MARCH 3, 10:30PM

On July 3, 2012, internationally renowned guitar superstar Joe Bonamassa brought a very special and exclusive acoustic presentation to the Vienna Opera House. The Vienna Opera House is a sublime cultural iconic venue steeped in history and heritage. Joining Joe on his vintage acoustic instruments is an eclectic assortment of craftsmen of disparate world flavors, provided by top artists from around the globe. Also, tune in for information on how to get a special guitar autographed by Joe!

UNLEASH THE POWER OF THE FEMALE BRAIN WITH DR. DANIEL AMEN

FRIDAY, MARCH 1, 9:30PM, SATURDAY, MARCH 2, 12PM, THURSDAY, MARCH 7, 8PM, AND SATURDAY, MARCH 9, 3PM

Dr. Amen shows how to strengthen, optimize and heal the most important part of females, their brains. Specifically you will learn how to harness the unique strengths of the female brain – intuition, multi-tasking, collaboration, empathy, self-control and a little worry – and how to overcome some of its inherent vulnerabilities, such as anxiety, depression, taking on too much, and being unable to turn your brain off.

RICK STEVES' EUROPE TRAVEL SKILLS

SATURDAY, MARCH 2, 2PM, AND THURSDAY, MARCH 14, 8PM

Rick Steves shares the essential skills of smart travel to Europe. He covers planning an itinerary, hurdling the language barrier, driving rental cars and catching trains, avoiding scams, eating well, sleeping smart, staying safe and revealing everything viewers need to know to turn their travel dreams into reality.

LAWRENCE WELK PRECIOUS MEMORIES

SATURDAY, MARCH 2, 6PM

This special features 15 stars from the Welk Musical Family, including Norma Zimmer, The Lennon Sisters, Jo Ann Castle, Ralna English, Guy Hovis, Mary Lou Metzger, Jack Imel, Tom Netherton, Ken DeLo, Dick Dale, Gail Farrell, Bob Ralston, and Joe Feeney. Special guests include Chris Feeney and Tim Padilla plus archival clips and vintage photographs of Lawrence Welk and his Musical Family.

Underwritten by Alick's Home Medical

A 60'S POP FLASHBACK: HULLABALOO (MY MUSIC)

SATURDAY, MARCH 2, 8PM, MONDAY, MARCH 4, 10PM

Hosted by Peter Noone of Herman's Hermits, this special is the first-ever retrospective of the fondly remembered and highly influential 1965-66 NBC primetime series "Hullabaloo." The top singers and groups of the hippest decade present their greatest hits, including the Byrds, Sonny & Cher, Paul Revere and the Raiders, the Mamas & the Papas, Nancy Sinatra, the Four Seasons and the Animals.



VISIT WNIT.ORG/PROGRAMS FOR MORE!



Great Performances: Andrea Bocelli Love in Portofino



An Evening with Jerry Lewis: Live from Las Vegas

CELTIC THUNDER MYTHOLOGY

**SATURDAY, MARCH 2, 10PM,
TUESDAY, MARCH 5, 10PM, AND
SATURDAY, MARCH 16, 6PM**

Filmed on location at the Helix Theater in Dublin, this program tells the story of their ancestors in Ireland, their legends, their history and their stories. All six Celtic Thunder principals feature prominently in Mythology, from haunting solo numbers to rousing ensembles and great original tracks that were written especially for Mythology, such as the show opening number "Voices" and the finale "My Land."

GREAT PERFORMANCES: ANDREA BOCELLI LOVE IN PORTOFINO

**SUNDAY, MARCH 3, 8:30PM,
FRIDAY, MARCH 8, 8PM, MONDAY,
MARCH 11, 9:30PM, AND
SATURDAY, MARCH 16, 8PM**

International superstar Andrea Bocelli returns to GREAT PERFORMANCES once again to delight fans with a new concert special of classical favorites, pop standards and Brazilian jazz, this time from the breathtaking coastal setting of Portofino, Italy. Bocelli is joined by trumpeter Chris Botti, David Foster and other special guests to perform a select collection of the world's most famous love songs.

Underwritten by Holy Cross Village at Notre Dame

MAGIC MOMENTS: BEST OF 50'S POP (MY MUSIC)

**TUESDAY, MARCH 5, 8PM,
FRIDAY, MARCH 8, 10PM AND
SATURDAY, MARCH 9, 8PM**

Phyllis McGuire, Pat Boone and Nick Clooney host this nostalgic trip back to the 1950s. The program's mix of live performance and archival footage takes viewers back to the era's pop music days with classic moments from Patti Page, Perry Como, Debbie Reynolds, the McGuire Sisters and more.

AN EVENING WITH JERRY LEWIS: LIVE FROM LAS VEGAS WEDNESDAY, MARCH 6, 8PM, AND SUNDAY, MARCH 10, 6:30PM

Join Jerry Lewis in performance – telling stories through narrative, musical performances and TV and film montages, including rare and never-before-seen film clips from his personal and private film vaults. Throughout three acts, Jerry reminisces about his eight decade career, the birth of the Lewis & Martin team, and his solo career, all punctuated with film clips, music and special surprise guests.

DANIEL O'DONNELL FROM THE HEARTLAND

**SATURDAY, MARCH 9, 6:30PM AND
WEDNESDAY, MARCH 13, 8PM**

Beloved Irish crooner, Daniel O'Donnell returns to PBS with his melodic voice performing live in the Hawkeye state (Iowa) as he mixes it up a bit by sharing several seldom-seen recordings like "Distant Drums," "Farside Banks of Jordan" and paying tribute to some of the greatest artists of all time with Loretta Lynn's "Standing Room Only" and Andy Williams' "Moon River."

MASTERPIECE CLASSIC: DOWNTON ABBEY SEASON 3 GALA

SUNDAY, MARCH 17 3PM-12AM

Enjoy a repeat performance of all episodes from Season 3. The Great War is over and a long-awaited engagement is on, but all is not tranquil at Downton Abbey as wrenching social changes, romantic intrigues, and personal crises grip the majestic English country estate for a third thrilling season. Robert, Earl of Grantham, sticks to his duty to maintain Downton more firmly than ever.

Underwritten by 1st Source Bank, Good Neighbor Pharmacies and Holy Cross Village at Notre Dame, Center for History, Robin Hood Players Theatre Company, Ruthmere Museum, South Bend Symphony and Nanovic Institute for European Studies

WORTH WATCHING

MARCH



American Masters: Margaret Mitchell



Time Team Special Edition

All programs are on both 34.1 and 34.2 unless noted.

ANTIQUES ROADSHOW
MONDAYS, 8PM ; **REPEATS**
THURSDAYS, 9PM **AND 10PM**

“SPOKANE” (HOUR THREE) –
MARCH 18 AND 21

In the final episode from Spokane, Washington, ANTIQUES ROADSHOW host Mark L. Walberg and appraiser Bill Mercer visit the Northwest Museum of Arts & Culture and its collection of exquisite beaded bags, crafted by Indian tribes of the Columbia River region. Discoveries abound at the Spokane Convention Center as well, including a circa 1900 Louis XIV-style clock; a beautifully preserved 19th-century silk Heriz rug; and an heirloom desk and chair used at the United States House of Representatives from 1857 to 1873.

Underwritten by 1st Source Bank, Alick's Home Medical, Center for Hospice Care, Gibson, The Gibson Foundation, Goshen Antique Mall and Northern Box Company

MARKET WARRIORS
MONDAYS, 9PM

“ANTIQUING IN WALNUT, IA” –
MARCH 18

This week the MARKET WARRIORS head to Walnut, Iowa, to the Walnut Antique Show, with a new competitor in the mix. The target

assignment is gold, and Mark L. Walberg injects some quick wit when one of the pickers goes for a broad interpretation the others aren't buying. Some key finds include a Herman Miller chair, an aluminum plane and a piece of tramp art (a woodcutting style that involves layers of whittled pieces).

AMERICAN MASTERS:
MARGARET MITCHELL
MONDAY, MARCH 18, 10PM

Discover the Pulitzer Prize-winning author behind *Gone With the Wind*, one of the world's best-selling novels. Margaret Mitchell was a charismatic force who challenged the stifling Southern social order and struggled with the changing role of women and the liberation of African Americans. She suffered from depression and illness and experienced profound identity shifts during her life.

PHILIP ROTH: UNMASKED
FRIDAY, MARCH 29, 9PM

Explore the life of the Pulitzer Prize- and National Book Award-winning novelist Philip Roth. With 31 books to his credit, including *Goodbye, Columbus*; *Portnoy's Complaint*; and *Sabbath's Theater*, Roth practically invented the genre of factual-fictional autobiography and commands ownership of the Jewish-American novel.

TIME TEAM SPECIAL EDITION
TUESDAY, MARCH 19, 8PM

The United Kingdom's groundbreaking archaeology series, TIME TEAM, takes viewers on an expedition to Jamestown, where a British company's commercial enterprise planted the seeds of the United States. Then, TIME TEAM tears into the queen's gardens in an unprecedented opportunity to unearth the secrets of Windsor Castle and Buckingham Palace, where the royal finds include the foundation of a 14th-century building where Edward III honored the legendary Arthurian knights.

NATURE
WEDNESDAYS, 8PM

“THE LONELIEST ANIMALS” –
MARCH 20

The loneliest animals are the most endangered species on the planet. In many cases, intensive captive breeding programs have been launched with the aim of sustaining these animals and the hope of returning them to the wild. Featured animals include Yangtze turtles under 24-hour surveillance; a baby Sumatran rhino; a special collection of lemurs; the Spix's macaw, a bird declared extinct in the wild in 2000; and “Lonesome George,” a giant tortoise from the Galapagos, who is the last of his kind.

Underwritten by Martin's Super Markets



VISIT WNIT.ORG/PROGRAMS FOR MORE!



180 Days: A Year Inside an American School



Dangerous Edge: A Life of Graham Greene

NOVA
WEDNESDAYS, 9PM

“HUNTING THE ELEMENTS” –
MARCH 27

What are things made of? Fewer than 100 naturally occurring elements form the ingredients of everything in our world — from solid rocks to ethereal gases, from scorching acids to the living cells in our body. David Pogue spins viewers through the world of weird, extreme chemistry on a quest to unlock the secrets of the elements.

Underwritten by Zimmer and Holy Cross Village at Notre Dame

FROM DUST TO DREAMS:
OPENING NIGHT AT THE
SMITH CENTER FOR THE
PERFORMING ARTS
FRIDAY, MARCH 22, 9PM

Share the excitement of opening night at the new Smith Center in Las Vegas. Neil Patrick Harris hosts FROM DUST TO DREAMS: OPENING NIGHT AT THE SMITH CENTER FOR THE PERFORMING ARTS, headlined by Jennifer Hudson, Carole King, Martina McBride and many others from the worlds of music, television, stage and screen.

180 DAYS: A YEAR INSIDE
AN AMERICAN SCHOOL
MONDAY-TUESDAY, MARCH 25-26, 9PM

Observe a tireless team of teachers and school leaders dealing with the usual antics of teenagers and the changing tides of a fast-moving administration that is responding to pressures from outside partners, politicians and forces in the community. A surprising and dramatic end to the school year sheds light on both the extraordinary challenges and opportunities today’s public schools face.

DANGEROUS EDGE:
A LIFE OF GRAHAM GREENE
FRIDAY, MARCH 29, 10:30PM

British actor Derek Jacobi narrates this portrait of author Graham Greene, a British spy, doubting Catholic and manic-depressive who wrote critically acclaimed best-sellers, including *The Quiet American*, *Brighton Rock*, *The End of the Affair* and *The Third Man*. The documentary weaves Greene’s novels and movies into the story of his life and reveals an extraordinary man who traveled the globe to escape the boredom of ordinary existence.

CALL THE MIDWIFE, SEASON 2
SUNDAYS, MARCH 31-MAY 19, 8PM

CALL THE MIDWIFE, based on the best-selling memoirs of the late Jennifer Worth, returns for a second season. Nonnatus House opens its doors to warmly welcome the audience back into 1950s East End London and continues to follow Poplar’s community of exceptional midwives and nursing nuns. The new series stays true to its roots — more births, babies and bicycling, plus blossoming romance from an unexpected quarter.

Underwritten by Holy Cross Village at Notre Dame

MASTERPIECE CLASSIC:
MR. SELFRIDGE
SUNDAYS, MARCH 31-MAY 19, 9PM

Enjoy a dramatization of the real-life story of Harry Gordon Selfridge, the flamboyant and visionary American founder of the famous London department store that revolutionized the modern shopping experience. Created by Andrew Davies (“*Little Dorrit*”), the program features Jeremy Piven in his first television role since the hit series “*Entourage*.”

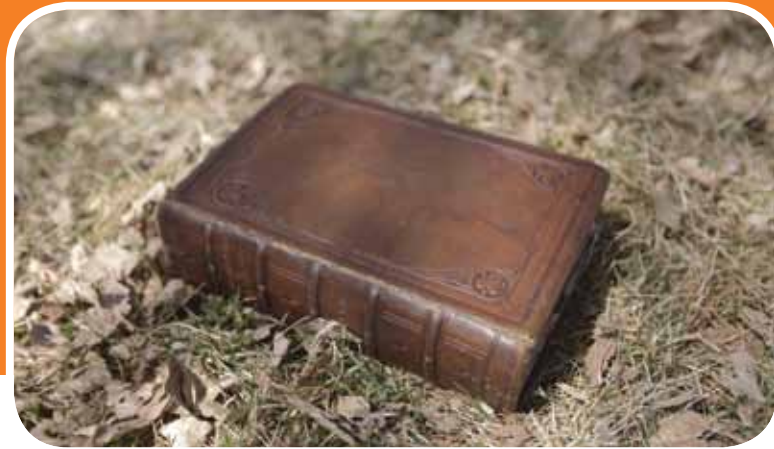
Underwritten by Good Neighbor Pharmacy and South Bend Symphony

WORTH WATCHING

APRIL



Kind Hearted Woman



History Detectives


All programs are on both 34.1 and 34.2 unless noted.

KIND HEARTED WOMAN

MONDAY, APRIL 1, 9PM AND TUESDAY, APRIL 2, 9PM

Filmmaker David Sutherland profiles Robin Charboneau, a divorced mother and Oglala Sioux woman living on North Dakota's Spirit Lake Reservation. Sutherland follows Charboneau over three years as she struggles to raise her children, further her education, heal the wounds of sexual abuse and battle alcoholism. She fights in tribal court for custody of the children, even after her ex-husband is convicted of sexually molesting his daughter and another child.


ANTIQUES ROADSHOW

MONDAYS, 8PM ; REPEATS THURSDAYS, 9PM  AND 10PM 

"CINCINNATI, OH" (HOUR ONE) – APRIL 1

ANTIQUES ROADSHOW visits the American Sign Museum in Cincinnati, Ohio, for a look at vintage electric signs. Other highlights include a baseball bat used by Mickey Mantle; art pottery from Cincinnati's very own Rookwood Pottery; and works by locally born and world-renowned artist Edward Henry Potthast, valued at \$41,000-\$63,000.

Underwritten by 1st Source Bank, Alick's Home Medical, Center for Hospice Care, Gibson, The Gibson Foundation, Gosben Antique Mall and Northern Box Company

 = InFocus only

 = WNIT only

HISTORY DETECTIVES

TUESDAY, APRIL 2, 8PM  AND THURSDAY, APRIL 4, 9PM 

EPISODE #1008

The History Detectives investigate four stories from the American West. Did a biography of legendary frontiersman Kit Carson once belong to members of his family? Then, a saddle tells the story of Yakima Canutt, who made life safer for movie stunt artists. What is the meaning behind the mysterious inscription on sheet music of the popular western song "Tumbling Tumbleweeds"? Finally, did a pivotal character in the Modoc Indian wars weave this basket?

Underwritten by 32 Pearls Family Dentistry, Dr. Dane and Mary Louise Miller Foundation, The Village at Winona and Kurt Simon & the Jewish Community of St. Joseph County

NATURE

WEDNESDAYS, 8PM 

"WHAT PLANTS TALK ABOUT" – APRIL 3

Hard core science is effortlessly integrated with a light-hearted look at how plants behave, revealing a world where plants are as busy, responsive and complex as we are. From the stunning heights of the Great Basin Desert to the lush coastal rainforests of west coast Canada, scientist J.C. Cahill takes us on a journey into the "secret world of plants," revealing an astonishing landscape where plants eavesdrop on each other, talk to their allies, call in insect mercenaries and nurture their young.

Underwritten by Martin's Super Markets

EAT, FAST AND LIVE LONGER WITH MICHAEL MOSLEY

WEDNESDAY, APRIL 3, 10PM

British journalist and physician Michael Mosley has set himself an ambitious goal: to live longer, stay younger and lose weight, while making as few changes to his life as possible. Find out if the ancient idea of fasting holds the secret to a longer, healthier life.

MICHAEL FEINSTEIN'S AMERICAN SONGBOOK

FRIDAYS, APRIL 5, 9PM AND APRIL 12, 10PM

"SHOW TUNES" – APRIL 5, 9PM

Stephen Sondheim, Angela Lansbury and Christine Ebersole appear in this episode about great American musicals. Tony Award-winner Ebersole gives a tour de force performance of some of the greatest show tunes of all time, and Lansbury reflects on her Broadway career, from Mame to Sweeney Todd and more. Feinstein discusses his personal relationship with Ira Gershwin and performs the classic "Lullaby of Broadway" and "Let Me Entertain You."



VISIT WNIT.ORG/PROGRAMS FOR MORE!



Michael Feinstein's American Songbook



Call the Midwife, Season 2

“LET’S DANCE” – APRIL 5, 10PM

Fred Astaire was the favorite singer of Irving Berlin, Cole Porter and the Gershwins. Why was this dancer so beloved by these composers? That question launches Feinstein into an exploration of the marriage of music and choreography, unearthing rare home movies of Astaire rehearsing on set, and never-before-seen footage of Gene Kelly’s Broadway debut in the original Pal Joey. Liza Minnelli, who knew both Astaire and Kelly, dispatches an amazing deconstruction of a dance number from the musical perspective.

“ON THE AIR” – APRIL 12, 10PM

Decades ago, the Golden Age of Radio fulfilled the idol-making role in the U.S. Feinstein traces the phenomenon with archival clips of Bing Crosby, Cab Calloway, Kate Smith and others. He conducts one of the last interviews with TV and stage star Rose Marie (“Sally Rodgers” on “The Dick Van Dyke Show”) and learns about her career as a child radio star. On his own radio program, Feinstein showcases virtuoso classical superstars, including violinist Joshua Bell and pianist Jeremy Denk.

**CALL THE MIDWIFE, SEASON 2
SUNDAYS, APRIL 7-MAY 19, 8PM**

EPISODE 2 – APRIL 7

The Nonnatus community is rocked when the Kelly family’s newborn son dies in unexplained circumstances. Cynthia, who had attended the birth, comes under intense scrutiny from the police and the pregnant women of Poplar. Now fully ensconced in married life with PC Noakes, Chummy decides to pursue her dream, bringing about a different sort of pressure. Meanwhile, a chance encounter returns Jimmy to Jenny’s life.

EPISODE 3 – APRIL 14

Jenny is seconded to a short-staffed London Hospital to work on the male surgical ward. Hesitant about her temporary assignment, she becomes increasingly uneasy when she finds herself working under an intimidating surgeon. In one of their most unusual cases, the nuns and midwives meet a forthright pair of identical twins, one of whom is pregnant, and Jenny unexpectedly helps to save the life of an old friend.

EPISODE 4 – APRIL 21

Jenny needs all her midwifery skill when she and Sister Evangelina assist at the birth of a baby born with spina bifida. The parents struggle to understand and accept their son’s condition. Jenny, who has never delivered a disabled child, struggles to accept the implications the illness could have for the child’s future. Nonnatus House, meanwhile, plays host to an acquaintance of Chummy’s — an eccentric cleric who befriends Jane.

EPISODE 5 – APRIL 28

The whole Poplar community pulls together to prepare for the annual Summer Fete. At the ante-natal clinic, Jenny meets Nora, an impoverished mother of eight, who is distraught that she may soon have another mouth to feed. Jenny’s attempts to reassure her fall on deaf ears, and a desperate Nora takes matters into her own hands.

Underwritten by Holy Cross Village at Notre Dame

WORTH WATCHING

APRIL



Masterpiece Classic: Mr. Selfridge



NOVA: Australia's First 4 Billion Years

MASTERPIECE CLASSIC: MR. SELFRIDGE SUNDAYS, APRIL 7-MAY 19, 9PM

Jeremy Piven (“Entourage”) stars as a wheeling-dealing American who shows early 1900s Londoners how to shop. Based on the life of colorful retail magnate Harry Gordon Selfridge, this eight-part series is created by Emmy® Award-winning writer Andrew Davies (“Pride and Prejudice,” “Bleak House”). Also starring are Frances O’Connor (“Madame Bovary”), Aisling Loftus (“Page Eight”), Zoe Tapper (“Zen”), Amanda Abbington (“Case Histories”) and Samuel West (“Any Human Heart”).

Underwritten by Good Neighbor Pharmacy and South Bend Symphony

DEFIANT REQUIEM: VOICES OF RESISTANCE SUNDAY, APRIL 7, 10PM

In the face of horrific living conditions, starvation and the threat of deportation to Auschwitz, the Jewish inmates of Terezin concentration camp — artists, musicians, poets and writers — fought back ... with art and music. Led by conductor Raphael Schachter, they re-imagined a Catholic liturgical work, Verdi’s Requiem, as a condemnation of the Nazis. Ultimately, they performed for Nazi brass, singing what they dared not say.

Underwritten by McDonald Physical Therapy & Sports Rehabilitation Center

MARKET WARRIORS MONDAYS, 9PM

“ANTIQUING IN CHICAGO, IL” – APRIL 8

This week on MARKET WARRIORS, the pickers head to the Randolph Street Market in Chicago, Illinois, where the target assignment is to find something from the 1970s. One picker runs out of time as another intentionally tries to hoodwink his opponents about an item made three decades later. Pickers also try to sell items bought at a previous flea market. Notable finds include a pair of mid-century fiberglass chairs, a modern coffee table and an Aunt Jemima clock.

AMERICAN MASTERS: CAROL BURNETT: A WOMAN OF CHARACTER TUESDAY, APRIL 9, 8PM

For 11 years, Americans watched “The Carol Burnett Show” as the wacky performer yelled like Tarzan and won — and sometimes broke — our hearts with her edgy, always sympathetic, characters. She could fall down a flight of stairs or hold her own in a duet with Julie Andrews. Yet, as with so many brilliant comedians, hers was a difficult childhood.

NOVA WEDNESDAYS, 9PM

“AUSTRALIA’S FIRST 4 BILLION YEARS” – APRIL 10

Of all the continents on Earth, none preserves a more spectacular story of its origins than Australia. NOVA’s miniseries takes viewers on a rollicking adventure from the birth of the Earth to the emergence of the world we know today. With high-energy host and geologist Richard Smith, meet titanic dinosaurs and giant kangaroos, sea monsters and prehistoric crustaceans, disappearing mountains and deadly asteroids.

Underwritten by Zimmer and Holy Cross Village at Notre Dame

THE TRUTH ABOUT EXERCISE WITH MICHAEL MOSLEY WEDNESDAY, APRIL 10, 10PM

Join British journalist and physician Michael Mosley on his journey to uncover the truth about exercise. Mosley reveals the latest scientific discoveries about how our bodies respond to a workout and why individuals respond differently.



VISIT WNIT.ORG/PROGRAMS FOR MORE!



The Bletchley Circle



The Dust Bowl

ORCHESTRA OF EXILES SUNDAY, APRIL 14, 10PM

This is the story of the great Jewish violinist Bronislaw Huberman, who, in 1936, was able to move 70 of the best Jewish musicians from Germany to Palestine to found what would become the Israel Philharmonic Orchestra. Huberman's efforts ultimately rescued 1,000 Jews from the Holocaust.

Underwritten by McDonald Physical Therapy & Sports Rehabilitation Center

GUTS WITH MICHAEL MOSLEY WEDNESDAY, APRIL 17, 10PM

Join British journalist and physician Michael Mosley to uncover the secret life of the human digestive tract in this eye-opening and detailed exploration of a part of the body we seldom see. Enter the strange and mysterious world of the human stomach!

THE BLETCHLEY CIRCLE SUNDAYS, APRIL 21-MAY 5, 10PM

THE BLETCHLEY CIRCLE follows four ordinary women with the extraordinary ability to break codes, a skill honed during World War II when they worked undercover at Bletchley Park, site of the United Kingdom's main decryption establishment. Now in 1952, Susan, Millie, Lucy and Jean have returned to civilian life, keeping their intelligence work secret from all, including family and friends. A series of ghastly murders targeting women, however, re-unites the team as they set out to decode the pattern behind the crimes.

EPISODE 1 – APRIL 21

Susan, noticing a pattern in a string of London murders, contacts her old friends from Bletchley — Millie, Lucy and Jean — to try to identify the killer. Treating the crimes like a code to be cracked, the women gather all available information and evidence and then, through a sequence of clever deductions, determine how the killer is finding his victims and where a missing girl must have been abducted. Can they reach her before the killer claims his fifth victim?

THE DUST BOWL TUESDAYS, APRIL 23-30, 8PM

“THE GREAT PLOW UP” – APRIL 23

In the first episode of Ken Burns's THE DUST BOWL, feel the full force of the worst manmade environmental disaster in America's history as survivors recall the terror of the dust storms, the desperation of hungry families and how they managed to find hope even as the earth and heavens seemed to turn against them.

“REAPING THE WHIRLWIND” – APRIL 30

In the second episode of Ken Burns's DUST BOWL, experience the gradual relief as the families of the plains seek new lives in California and government conservation efforts — and a break in the drought in 1939 — eventually stabilize the soil and bring the farms back to life, but with dangers of another Dust Bowl facing future generations.

LIVE FROM LINCOLN CENTER FRIDAYS, APRIL 12-26, 9PM

“RODGERS & HAMMERSTEIN'S CAROUSEL WITH THE NEW YORK PHILHARMONIC” – APRIL 26

One of spring's cultural highlights is the staging of Rodgers & Hammerstein's Carousel, the iconic American musical beloved by generations. The New York Philharmonic's production features a cast of stars drawn from Broadway and opera stages, including Kelli O'Hara as Julie Jordan and Nathan Gunn as Billy Bigelow; Rob Fisher conducts and John Rando directs.

PRIMETIME – (34.1)

MARCH



	8:00 pm	8:30 pm	9:00 pm	9:30 pm	10:00 pm	10:30 pm	11:00 pm	11:30 pm
1 Fri	Joe Bonamassa: An Acoustic Event At The Vienna Opera House			Unleash The Power Of The Female Brain With Dr. Daniel Amen			Is It Me?	
2 Sat	60s Pop Flashback: Hullabaloo				Celtic Thunder: Mythology			
3 Sun	The Piano Guys	Andrea Bocelli: Love In Portofino				Joe Bonamassa: An Acoustic Evening		
4 Mon	Celtic Woman: Believe				60s Pop Flashback: Hullabaloo			
5 Tue	Magic Moment: The Best Of 50s Pop				Celtic Thunder: Mythology			
6 Wed	An Evening With Jerry Lewis			Chris Mann In Concert			Aaron Neville	
7 Thu	Unleash The Power Of The Female Brain With Dr. Daniel Amen				Is It Me Or My Hormones?			Super Brain
8 Fri	Andrea Bocelli: Love In Portofino				Magic Moments: The Best of 50s Pop			
9 Sat	Magic Moments: The Best Of 50s Pop				Chris Mann In Concert			Love For Levon
10 Sun	Rock, Pop And Doo Wop				Celtic Thunder: Mythology			
11 Mon	Oscar Hammerstein II: Out Of My Dreams			Andrea Bocelli Love In Portofino				Ed Slott
12 Tue	Super Brain With Dr. Rudy Tanzi			Protect Your Memory With Dr. Neal Barnard			Suze Orman's Money Class	
13 Wed	Daniel O'Donnell From The Heartland			The Piano Guys Live At Red Butte Garden			Power Of The Female Brain	
14 Thu	Rick Steves' Europe: Travel Skills				Rock, Pop And Doo Wop			
15 Fri	Country Pop Legends				Muddy Waters & The Rolling Stones			ADD & Mastering It
16 Sat	Andrea Bocelli Love In Portofino				Rock, Pop And Doo Wop			
17 Sun	Downton Abbey Gala							
18 Mon	Antiques Roadshow: Spokane, WA		Market Warriors: Walnut, IA		American Masters: Margaret Mitchell		Charlie Rose	
19 Tue	Time Team Special Edition				Frontline		Charlie Rose	
20 Wed	Nature: The Loneliest Animals		NOVA: Smartest Machine On Earth		Secrets: World's Biggest Bomb		Charlie Rose	
21 Thu	Ask An Expert		Antiques Roadshow: Spokane, WA		The Rosalind Russell Story		Charlie Rose	
22 Fri	Washington Week	Economic Outlook	From Dust To Dreams: Opening Night At The Smith Center				Charlie Rose	
23 Sat	Antiques Roadshow: Spokane, WA		Keeping Up Appearances	Keeping Up Appearances	As Time Goes By	As Time Goes By	Globe Trekker: World History England	
24 Sun	Kristin Chenoweth: The Dames Of Broadway		Masterpiece Contemporary: The Song Of Lunch		POV: Girl Model			R. Russell Story
25 Mon	Antiques Roadshow: Myrtle Beach, SC		180 Days: A Year Inside An American High School				Charlie Rose	
26 Tue	Tavis Smiley Reports: Education Under Arrest		180 Days: A Year Inside An American High School				Charlie Rose	
27 Wed	Nature: River Of No Return		NOVA: Hunting The Elements				Charlie Rose	
28 Thu	Ask An Expert		Antiques Roadshow: Myrtle Beach, SC		Amelia Earhart's Last Flight		Charlie Rose	
29 Fri	Washington Week	Economic Outlook	Philip Roth: Unmasked			A Life Of Graham Greene		Nightly Business Report
30 Sat	Antiques Roadshow: Myrtle Beach, SC		Keeping Up Appearances	Keeping Up Appearances	As Time Goes By	As Time Goes By	Globe Trekker: Madrid City Guide	
31 Sun	Call The Midwife (Season 2 Premiere)		Masterpiece Classic: Mr. Selfridge Part 1				The Vatican And The Papacy	

PRIMETIME – (34.2)

MARCH



	8:00 pm	8:30 pm	9:00 pm	9:30 pm	10:00 pm	10:30 pm	11:00 pm	11:30 pm
1 Fri	Joe Bonamassa: An Acoustic Event At The Vienna Opera House			Unleash The Power Of The Female Brain With Dr. Daniel Amen			Is It Me?	
2 Sat	60s Pop Flashback: Hullabaloo				Celtic Thunder: Mythology			
3 Sun	The Piano Guys	Andrea Bocelli: Love In Portofino				Joe Bonamassa: An Acoustic Evening		
4 Mon	Celtic Woman: Believe				60s Pop Flashback: Hullabaloo			
5 Tue	Magic Moment: The Best Of 50s Pop				Celtic Thunder: Mythology			
6 Wed	An Evening With Jerry Lewis			Chris Mann In Concert			Aaron Neville	
7 Thu	Unleash The Power Of The Female Brain With Dr. Daniel Amen				Is It Me Or My Hormones?			Super Brain
8 Fri	Andrea Bocelli Love In Portofino				Magic Moments: The Best Of 50s Pop			
9 Sat	Magic Moments: The Best Of 50s Pop				Chris Mann In Concert			Love For Levon
10 Sun	Rock, Pop & Doo Wop				Celtic Thunder: Mythology			
11 Mon	Oscar Hammerstein II: Out Of My Dreams			Andrea Bocelli Love In Portofino				Ed Slott
12 Tue	Super Brain With Dr. Rudy Tanzi			Protect Your Memory With Dr. Neal Barnard			Suze Orman's Money Class	
13 Wed	Daniel O'Donnell From The Heartland			The Piano Guys Live At Red Butte Garden			Power Of The Female Brain	
14 Thu	Rick Steves' Europe: Travel Skills				Rock, Pop & Doo Wop			
15 Fri	Country Pop Legends				Muddy Waters & The Rolling Stones			ADD & Mastering
16 Sat	Andrea Bocelli Love In Portofino				Rock, Pop & Doo Wop			
17 Sun	Downton Abbey Gala							
18 Mon	Exp. Michiana	Dinner & A Book	Market Warriors: Walnut, IA	Antiques Roadshow: Spokane, WA		Charlie Rose		
19 Tue	Exp. Michiana	Inside E Street	Antiques Roadshow: Spokane, WA		Frontline		Charlie Rose	
20 Wed	Exp. Michiana	Outdoor Elements	NOVA: Smartest Machine On Earth	Secrets: World's Biggest Bomb		Charlie Rose		
21 Thu	Exp. Michiana	Rick Steves' Europe	Frontline		Antiques Roadshow: Spokane, WA		Charlie Rose	
22 Fri	Exp. Michiana	Need To Know	From Dust To Dreams: Opening Night At The Smith Center				Charlie Rose	
23 Sat	From Dust To Dreams: Opening Night At The Smith Center				Secrets Of The Dead		Austin City Limits	
24 Sun	Kristin Chenoweth: The Dames Of Broadway		Masterpiece Contemporary: The Song Of Lunch		POV: Girl Model			Austin City Limits
25 Mon	Exp. Michiana	Dinner & A Book	180 Days: A Year Inside An American High School				Charlie Rose	
26 Tue	Exp. Michiana	Inside E Street	180 Days: A Year Inside An American High School				Charlie Rose	
27 Wed	Exp. Michiana	Outdoor Elements	NOVA: Hunting The Elements				Charlie Rose	
28 Thu	Exp. Michiana	Rick Steves' Europe	Tavis Smiley Reports		Antiques Roadshow: Myrtle Beach, SC		Charlie Rose	
29 Fri	Exp. Michiana	Need To Know	Philip Roth: Unmasked			A Life Of Graham Greene		Fort Niagara
30 Sat	Tavis Smiley Reports		American Masters				Fort Niagara	Austin City Limits
31 Sun	Call The Midwife (Season Premiere)		Masterpiece Classic: Mr. Selfridge				Austin City Limits	

PRIMETIME – (34.1)

APRIL



	8:00 pm	8:30 pm	9:00 pm	9:30 pm	10:00 pm	10:30 pm	11:00 pm	11:30 pm
1 Mon	Antiques Roadshow: Cincinnati, OH		A Kind Hearted Woman				Charlie Rose	
2 Tue	History Detectives		A Kind Hearted Woman					
3 Wed	Nature: What Plants Talk About		NOVA: Ancient Computer		Eat, Fast, And Live Longer		Charlie Rose	
4 Thu	Ask An Expert		Antiques Roadshow: Cincinnati, OH		Shadows Of Innocence		Charlie Rose	
5 Fri	Washington Week	Economic Outlook	Michael Feinstein's American Songbook		Michael Feinstein's American Songbook		Charlie Rose	
6 Sat	Antiques Roadshow: Cincinnati, OH		Keeping Up Appearances	Keeping Up Appearances	As Time Goes By	As Time Goes By	Globe Trekker: Eastern Canada	
7 Sun	Call The Midwife		Masterpiece Classic: Mr. Selfridge Pt. 2		Defiant Requiem: Voices Of Resistance			Rescue in Philippines
8 Mon	Antiques Roadshow: Cincinnati, OH		Market Warriors		Big Questions		Charlie Rose	
9 Tue	American Masters: Carol Burnett			Ribbon of Sand		Frontline		Charlie Rose
10 Wed	Clash: Encounters Of Bears And Wolves		NOVA: Australia Pt. 1		The Truth About Exercise		Charlie Rose	
11 Thu	Ask An Expert		Antiques Roadshow: Cincinnati, OH		In My Lifetime		Charlie Rose	
12 Fri	Washington Week	Economic Outlook	Lincoln Center: Josh Groban		Michael Feinstein's American Songbook		Charlie Rose	
13 Sat	Antiques Roadshow: Cincinnati, OH		Keeping Up Appearances	Keeping Up Appearances	As Time Goes By	As Time Goes By	Globe Trekker: Route 66 And Beyond	
14 Sun	Call The Midwife		Masterpiece Classic: Mr. Selfridge Pt. 3		Orchestra Of Exiles			Portraits of Emotion
15 Mon	Antiques Roadshow, Cincinnati, OH		Market Warriors, Rochester, MN		Big Questions		Charlie Rose	
16 Tue	In Performance		Secrets of the Dead		The Central Park Five			
17 Wed	Nature: Dark World Of The Eel		NOVA: Australia Pt. 2		Guts With Michael Mosley		Charlie Rose	
18 Thu	Ask An Expert		Antiques Roadshow: Cincinnati, OH		Autism: Coming Of Age		Charlie Rose	
19 Fri	Washington Week	Economic Outlook	Lincoln Center: Kate Smith		The Indiana University Singing Hoosiers		Charlie Rose	
20 Sat	The Best Of WNIT							
21 Sun	Call The Midwife		Masterpiece Classic: Mr. Selfridge Pt. 4		The Bletchley Circle Pt. 1		The Best Of WNIT	
22 Mon	Antiques Roadshow: Rapid City, SD		Market Warriors: Liberty, NC		Big Questions		Charlie Rose	
23 Tue	The Dust Bowl: The Great Plow Up Pt. 1				Frontline		Charlie Rose	
24 Wed	Everglades of the North		NOVA: Australia Pt. 3		Nature: Kangaroo Mob		Charlie Rose	
25 Thu	Ask An Expert		Antiques Roadshow: Rapid City, SD		American Masters: Carol Burnett			Nightly Business Report
26 Fri	Washington Week	Economic Outlook	Lincoln Center: Carousel With The NY Philharmonic					Nightly Business Report
27 Sat	Antiques Roadshow: Rapid City, SD		Keeping Up Appearances		As Time Goes By	As Time Goes By	Globe Trekker: Around The World	
28 Sun	Call The Midwife		Masterpiece Classic: Mr. Selfridge Pt. 5		The Bletchley Circle Pt. 2		Royal Memories	
29 Mon	Antiques Roadshow: Rapid City, SD		Antiques Roadshow: Vintage Phoenix		Big Questions		Charlie Rose	
30 Tue	The Dust Bowl: Reaping The Whirlwind Pt. 2				Frontline		Charlie Rose	

PRIMETIME – (34.2)

APRIL



	8:00 pm	8:30 pm	9:00 pm	9:30 pm	10:00 pm	10:30 pm	11:00 pm	11:30 pm
1 Mon	Exp. Michiana	Dinner & A Book	Kind Hearted Woman			Charlie Rose		
2 Tue	Exp. Michiana	Inside E Street	Kind Hearted Woman					
3 Wed	Exp. Michiana	Outdoor Elements	NOVA: Ancient Computers		Eat, Fast, And Live Longer		Charlie Rose	
4 Thu	Exp. Michiana	Rick Steves' Europe	History Detectives		Antiques Roadshow: Cincinnati, OH		Charlie Rose	
5 Fri	Exp. Michiana	Need To Know	Michael Feinstein's American Songbook		Michael Feinstein's American Songbook		Charlie Rose	
6 Sat	Eat, Fast, And Live Longer		Kind Hearted Woman			Austin City Limits: Bon Iver		
7 Sun	Call The Midwife		Masterpiece Classic: Mr. Selfridge Pt. 2		Defiant Requiem: Voices Of Resistance			Austin City Limits
8 Mon	Exp. Michiana	Dinner & A Book	Market Warriors: Chicago		Independent Lens: The House I Live In			
9 Tue	Exp. Michiana	Inside E Street	New Environmentalists	Ribbon Of Sand	Frontline		Charlie Rose	
10 Wed	Exp. Michiana	Outdoor Elements	NOVA: Australia Pt. 1		The Truth About Exercise		Charlie Rose	
11 Thu	Exp. Michiana	Rick Steves' Europe	Frontline		Antiques Roadshow: Cincinnati, OH		Charlie Rose	
12 Fri	Exp. Michiana	Need To Know	Lincoln Center: Josh Groban		Michael Feinstein's American Songbook		Charlie Rose	
13 Sat	American Masters: Carol Burnett			Sky Island	Lincoln Center: Josh Groban		Austin City Limits: John Legend	
14 Sun	Call The Midwife		Masterpiece Classic: Mr. Selfridge Pt. 3		Orchestra Of Exiles			Austin City Limits
15 Mon	Exp. Michiana	Dinner & A Book	Market Warriors: Rochester		Independent Lens: Wonder Women		Charlie Rose	
16 Tue	Exp. Michiana	Inside E Street	TBA		Central Park Five			
17 Wed	Exp. Michiana	Outdoor Elements	NOVA: Australia Pt. 2		Guts With Michael Mosley		Charlie Rose	
18 Thu	Exp. Michiana	Rick Steves' Europe	In Performance		Antiques Roadshow: Cincinnati, OH		Charlie Rose	
19 Fri	Exp. Michiana	Need To Know	Lincoln Center: Kate Smith		Havana, Havana!		Charlie Rose	
20 Sat	The Best Of WNIT							
21 Sun	Call The Midwife		Masterpiece Classic: Mr. Selfridge Pt. 4		The Bletchley Circle Pt. 1		Austin City Limits	
22 Mon	Exp. Michiana	Dinner & A Book	Market Warriors		Independent Lens		Fort Niagara	
23 Tue	Exp. Michiana	Inside E Street	Antiques Roadshow: Rapid City, SD		Frontline		Charlie Rose	
24 Wed	Exp. Michiana	Outdoor Elements	NOVA: Australia Pt. 3		Secrets Of The Dead		Charlie Rose	
25 Thu	Exp. Michiana	Rick Steves' Europe	Frontline		Antiques Roadshow: Rapid City, SD		Charlie Rose	
26 Fri	Exp. Michiana	Need To Know	Live From Lincoln Center: Carousel					Ribbon Of Sand
27 Sat	Live From Lincoln Center: Carousel				Ribbon Of Sand		Austin City Limits: Coldplay	
28 Sun	Call The Midwife		Masterpiece Classic: Mr. Selfridge Pt. 5		The Bletchley Circle Pt. 2		Austin City Limits: Coldplay	
29 Mon	Exp. Michiana	Dinner & A Book	Antiques Roadshow: Vintage Phoenix		Independent Lens: The Undocumented			Ribbon Of Sand
30 Tue	Exp. Michiana	Inside E Street	Antiques Roadshow, Rapid City, SD		Frontline		Charlie Rose	

WEEKDAYS—MARCH/APRIL

34.1

6:00 am	Body Electric
6:30 am	Wild Kratts
7:00 am	Arthur
7:30 am	Martha Speaks
8:00 am	Curious George
8:30 am	The Cat in the Hat Knows a Lot about That!
9:00 am	Super WHY!
9:30 am	Dinosaur Train
10:00 am	Sesame Street
11:00 am	Daniel Tiger's Neighborhood
11:30 am	Sid the Science Kid
Noon	Curious George
12:30 pm	The Cat in the Hat Knows a Lot About That!
1:00 pm	Super WHY!
1:30 pm	Dinosaur Train
2:00 pm	Wild Kratts
2:30 pm	Electric Company
3:00 pm	WordGirl
3:30 pm	Martha Speaks
4:00 pm	Arthur
4:30 pm	Clifford
5:00 pm	Wild Kratts
5:30 pm	BBC World News
6:00 pm	Rick Steves' Europe
6:30 pm	Experience Michiana
7:00 pm	PBS Newshour



34.2

6:00 am	Sit And Be Fit				
6:30 am	Classical Stretch				
7:00 am	Arthur				
7:30 am	Martha Speaks				
8:00 am	Curious George				
8:30 am	The Cat in the Hat Knows a Lot About That!				
9:00 am	Super WHY!				
9:30 am	Dinosaur Train				
10:00 am	Sesame Street				
11:00 am	Daniel Tiger's Neighborhood				
11:30 am	Sid the Science Kid				
Noon	Rick Steves' Europe				
12:30 pm	Mon-Rudy Maxa's World	Tues-American Woodshop	Wed-Great Getaways	Thu-Sara's Weeknight Meals	Fri-Just Seen It
1:00 pm	Mon-Globe Trekker	Tues-This Old House Hour	Wed-History Detective	Thu-Simply Ming/ Joanne Weir	Fri-Live From Artists Den
1:30 pm	Mon-Aviators	Tues-American Woodshop	Wed-Best of Painting	Thu-Cathlyn's Korean Cooking	Fri-Austin City Limits
2:00 pm	Mon-Journeys In India	Tues-Woodsmith Shop	Wed-Jerry Yarnell	Thu-Chef John Besh	Fri-Austin City Limits
3:00 pm	Mon-Politically Speaking	Tues-Rough Cut	Wed-Paint This With J. Arnell	Thu-Cook's Country	Fri-Live From the Artist's Den
3:30 pm		Tues-Economic Outlook		Thu-America's Test Kitchen	
4:00 pm	Mon-Inside Indiana Bus.	Tues-Indiana Expedition	Wed-Weekly Special	Thu-GED Connection	Fri-Indiana Wk in Review
4:30 pm		Tues-Indiana Wk in Review	Wed-Across Indiana	Thu-GED Connection	Fri-Snapshots
5:00 pm	Mon-Indiana Wk in Review	Tue-Indiana Supreme Court	Wed-VP	Thu-Indiana Wk in Review	Fri-VP
5:30 pm	Mon-Across Indiana		Wed-VP	Thu-Indiana Expedition	Fri-VP
6:00 pm	Mon-Weekly Special		Tue-Indiana Expeditions	Wed-VP	Thu-Weekly Special
6:30 pm	Nightly Business Report				
7:00 pm	PBS Newshour				





	SATURDAYS	SUNDAYS
6:00 am	Michigan Out-of-Doors	Curious George
6:30 am	The Best of Joy of Painting	The Cat in the Hat
7:00 am	Quilting Arts	Super WHY!
7:30 am	Fons & Porter	Dinosaur Train
8:00 am	Sewing With Nancy	Cyberchase
8:30 am	Sew It All	Biz Kids
9:00 am	Martha's Sewing Room	Outdoor Elements
9:30 am	Knitting Daily	Indiana Lawmakers
10:00 am	Lidia's Italy in America	INSide Indiana Business
10:30 am	Dinner & A Book	
11:00 am	America's Test Kitchen	Off the Record
11:30 am	Martha's Cooking School	Indiana Week in Review
Noon	In Julia's Kitchen	Washington Week
12:30 pm	Bake, Decorate, Celebrate	Economic Outlook
1:00 pm	Victory Garden	McLaughlin Group
1:30 pm	Burt Wolfe's Travel & Traditions	To The Contrary
2:00 pm	This Old House	Politically Speaking
2:30 pm	This Old House	
3:00 pm	Woodsmith's Shop	VP
3:30 pm	Woodwright's Shop	
4:00 pm	NOVA	
5:00 pm	Nature	VP
6:00 pm	Classic Gospel	VP
7:00 pm	Lawrence Welk	VP

	SATURDAYS	SUNDAYS
6:00 am	Bob the Builder	Sesame Street
6:30 am	Daniel Tiger's Neighborhood	
7:00 am	Curious George	Curious George
7:30 am	The Cat in the Hat	The Cat in the Hat
8:00 am	Super WHY!	Super WHY!
8:30 am	Dinosaur Train	Dinosaur Train
9:00 am	Thomas and Friends	Daniel Tiger's Neighborhood
9:30 am	Angelina Ballerina	Sid the Science Kid
10:00 am	This Old House Hour	Martha Speaks
10:30 am		Arthur
11:00 am	Antiques Roadshow	Wild Kratts
11:30 am		WordGirl
Noon	In Julia's Kitchen	Cyberchase
12:30 pm	Victory Garden	Electric Company
1:00 pm	This Old House	Washington Week
1:30 pm	This Old House	Need to Know
2:00 pm	Ask This Old House	Religion & Ethics Newsweek
2:30 pm	Hometime	To The Contrary
3:00 pm	Woodright's Shop	This Old House Hour
3:30 pm	Motorweek	
4:00 pm	Mind of a Chef	VP
4:30 pm	Martha Stewart's Cooking	VP
5:00 pm	Market Warriors	VP
6:00 pm	History Detectives	Nature
7:00 pm	Antiques Roadshow	NOVA

MARCH 2013 DAYTIME WEEKEND PLEDGE SCHEDULE

Saturday, March 2

- 6:30am The Blood Sugar Solution with Dr. Mark Hyman
- 8:00am Sewing with Nancy 30th Anniversary Special
- 9:00am Protect Your Memory with Dr. Neal Barnard
- 10:30am Is It Me or My Hormones? With Marcelle Pick
- 12:00pm Unleash the Power of the Female Brain with Dr. Daniel Amen
- 2:00pm Rick Steves' Europe Travel Skills
- 4:00pm Rick Steves' Delicious Europe
- 4:30pm Superbrain with Dr. Rudy Tanzi
- 6:00pm Lawrence Welk: Precious Memories

Sunday, March 3

- 3:00pm Les Miserables 25th Anniversary Concert at the O2
- 7:00pm The Piano Guys Live at Red Butte Garden

Saturday, March 9

- 6:30am Rick Steves' Delicious Europe
- 7:00am Dr. Fuhrman's Immunity Solution
- 9:00am Suze Orman's Money Class
- 11:00am Protect Your Memory with Dr. Neal Barnard
- 12:30pm Hopeful Aging with Dr. John Zeisel
- 1:30pm Is It Me or My Hormones? With Marcelle Pick
- 3:00pm Unleash the Power of the Female Brain with Dr. Daniel Amen
- 5:00pm The Piano Guys Live at Red Butte Garden
- 6:30pm Daniel O'Donnell from the Heartland

Sunday, March 10

- 3:00pm Ed Slott's Retirement Rescue for 2013!
- 5:00pm Super Brain with Dr. Rudy Tanzi
- 6:30pm An Evening with Jerry Lewis: Live from Las Vegas

Saturday, March 16

- 7:00am The Best of WNIT
- 4:00pm Country Pop Legends (My Music)
- 6:00pm Celtic Thunder Mythology

Sunday, March 17

- 3:00pm Downton Abbey Season 3 Gala

OVERNIGHT PROGRAMS MARCH



FRIDAY 1

Midnight Tavis Smiley
1:00 am This Old House Hour
2:00 am Sound Tracks
3:00 am Nature
4:00 am Battle For Elephants
5:00 am NOVA

SATURDAY 2

Midnight Is It Me?
1:00 am Shift Happens
2:30 am Protect Your Memory
4:00 am Retirement Rescue

SUNDAY 3

Midnight Orman Money Class
2:00 am Power/Female Brain
4:00 am Rick Steves' Europe

MONDAY 4

Midnight Dr. Furman's Immunity
2:00 am Hopeful Aging
3:00 am Retirement Rescue
5:00 am Easy Yoga For Arthritis

TUESDAY 5

Midnight Power/Female Brain
2:00 am Is It Me?
3:30 am Retirement Rescue
5:30 am Easy Yoga For Arthritis

WEDNESDAY 6

Midnight Dr. Wayne Dyer
3:00 am Blood Sugar Solution
4:30 am Super Brain

THURSDAY 7

Midnight Aaron Neville
12:30 am 60s Pop Flashback
2:30 am Orman Money Class
4:30 am Is It Me?

FRIDAY 8

Midnight Super Brain
1:00 am Immunity Solutions
2:30 am Shift Happens
4:30 am Protect Your Memory

SATURDAY 9

Midnight Protect Your Money
1:30 am Hopeful Aging
2:30 am Super Brain
4:00 am Rick Steves' Europe

SUNDAY 10

Midnight Joe Bonamassa
1:00 am Easy Yoga For Arthritis
2:00 am (Spring Time Change)
3:00 am Jerry Lewis
4:30 am ADD & Mastering It

MONDAY 11

Midnight Power/Female Brain
2:00 am Orman Money Class
4:00 am Furman's Immunity

TUESDAY 12

Midnight Retirement Rescue
1:30 am Protect Your Memory
3:00 am Chris Mann
4:30 am Piano Guys

WEDNESDAY 13

Midnight Orman Money Class
1:00 am Is It Me?
2:30 am Blood Sugar Solutions
4:00 am Rick Steves' Europe

THURSDAY 14

Midnight Power/Female Brain
1:00 am Rock, Pop & Doo Wop
3:00 am Great Performances
5:00 am Hopeful Aging

FRIDAY 15

Midnight Love For Levon
1:30 am Albert King
3:00 am Super Brain
4:30 am Shift Happens

SATURDAY 16

Midnight ADD & Mastering It
1:00 am Protect Your Memory
2:30 am Blood Sugar Solution
4:00 am Retirement Rescue

SUNDAY 17

Midnight Country Pop Legends
2:00 am Rock, Pop & Doo Wop
4:00 am Great Performances

MONDAY 18

Midnight Downton Abbey
12:30 am Is It Me?
2:00 am Power/Female Brain
4:00 am Orman Money Class

TUESDAY 19

Midnight Tavis Smiley/NBR
1:00 am Market Warriors
2:00 am Antiques Roadshow
3:00 am Call The Midwife
4:00 am Call The Midwife
5:00 am Call The Midwife

WEDNESDAY 20

Midnight Tavis Smiley/NBR
1:00 am Time Team Spec.Ed.
3:00 am Frontline
4:00 am Independent Lens
5:00 am Antiques Roadshow

THURSDAY 21

Midnight Tavis Smiley/NBR
1:00 am Nature
2:00 am NOVA
3:00 am Secrets/Dead
4:00 am Time Team Spec. Ed.

FRIDAY 22

Midnight Tavis Smiley/NBR
1:00 am This Old House Hour
2:00 am Time Team Spec. Ed.
4:00 am Nature
5:00 am NOVA

SATURDAY 23

Midnight Tavis Smiley/NBR
1:00 am Washington Week
1:30 am Need to Know
2:00 am From Dust To Dreams
4:00 am Secrets/Dead
5:00 am This Old House Hour

SUNDAY 24

Midnight Nature
1:00 am NOVA
2:00 am Frontline
3:00 am Independent Lens
4:00 am Secrets/Dead
5:00 am Washington Week
5:30 am Need To Know

MONDAY 25

Midnight Austin City Limits
12:30 am Live Lincoln Center
1:30 am Mast. Contemporary
2:30 am POV
4:00 am Independent Lens
5:00 am Market Warriors

TUESDAY 26

Midnight Tavis Smiley/NBR
1:00 am 180 Days Amer. HS
3:00 am Antiques Roadshow
4:00 am Live Lincoln Center
5:00 am Mast. Contemporary

WEDNESDAY 27

Midnight Tavis Smiley/NBR
1:00 am 180 Days Amer. HS
3:00 am Tavis Smiley Reports
4:00 am Secrets/Dead
5:00 am Antiques Roadshow

THURSDAY 28

Midnight Tavis Smiley/NBR
1:00 am Nature
2:00 am NOVA
4:00 am Tavis Smiley Reports
5:00 am Live Lincoln Center

FRIDAY 29

Midnight Tavis Smiley/NBR
1:00 am This Old House Hour
2:00 am Tavis Smiley Reports
3:00 am Nature
4:00 am NOVA

SATURDAY 30

Midnight Tavis Smiley/NBR
1:00 am Washington Week
1:30 am Need to Know
2:00 am American Masters
3:30 am Graham Greene
4:30 am Fort Niagara
5:00 am This Old House Hour

SUNDAY 31

Midnight Nature
1:00 am 180 Days Amer. HS
3:00 am 180 Days Amer. HS
5:00 am Washington Week
5:30 am Need To Know

NBR = Nightly Business Report



OVERNIGHT PROGRAMS APRIL



MONDAY 1

Midnight Call The Midwife
1:00 am Mr. Selfridge
3:00 am Philip Roth
4:00 am Fort Niagara
5:00 am History Detectives

TUESDAY 2

Midnight Tavis Smiley/NBR
1:00 am Kind Hearted Woman
3:00 am Call The Midwife
4:00 am Mr. Selfridge

WEDNESDAY 3

Midnight Tavis Smiley/NBR
1:00 am Kind Hearted Woman
4:00 am History Detectives
5:00 am Antiques Roadshow

THURSDAY 4

Midnight Tavis Smiley/NBR
1:00 am Nature: Plants Talk
2:00 am NOVA: Ancient Computer
3:00 am Kind Hearted Woman
5:00 am Eat, Fast, & Live Longer

FRIDAY 5

Midnight Tavis Smiley/NBR
1:00 am This Old House Hour
2:00 am Kind Hearted Woman
5:00 am History Detectives

SATURDAY 6

Midnight Tavis Smiley/NBR
1:00 am Washington Week
1:30 am Need To Know
2:00 am Feinstein's Showtunes
3:00 am Feinstein's Showtunes
4:00 am Antiques Roadshow
5:00 am This Old House Hour

SUNDAY 7

Midnight Nature: Plants Talk
1:00 am NOVA: Ancient Computer
2:00 am Kind Hearted Woman
5:00 am Washington Week
5:30 am Need To Know

MONDAY 8

Midnight Austin City Limits
12:30 am Call The Midwife
1:30 am Mr. Selfridge
2:30 am Defiant Requiem
4:00 am Eat, Fast, Live
5:00 am History Detectives

TUESDAY 9

Midnight Tavis Smiley/NBR
1:00 am Market Warriors
2:00 am Antiques Roadshow
3:00 am Call The Midwife
4:00 am Mr. Selfridge
5:00 am Eat, Fast, Live

WEDNESDAY 10

Midnight Tavis Smiley/NBR
1:00 am Carol Burnett
2:30 am Ribbon Of Sand
3:00 am Frontline
4:00 am Carol Burnett
5:30 am Sky Island

THURSDAY 11

Midnight Tavis Smiley/NBR
1:00 am Nature: Encounters
2:00 am NOVA: Australia
3:00 am Truth About Exercise
4:00 am Carol Burnett
5:30 am Sky Island

FRIDAY 12

Midnight Tavis Smiley/NBR
1:00 am This Old House Hour
2:00 am Carol Burnett
3:30 am Sky Island
4:00 am Nature: Encounters
5:00 am NOVA: Australia

SATURDAY 13

Midnight Tavis Smiley/NBR
1:00 am Washington Week
1:30 am Need To Know
2:00 am John Groban
3:00 am Feinstein's On The Air
4:00 am Antiques Roadshow
5:00 am This Old House Hour

SUNDAY 14

Midnight Nature: Encounters
1:00 am NOVA: Australia
2:00 am Frontline
3:00 am The House I Live In
5:00 am Washington Week
5:30 am Need To Know

MONDAY 15

Midnight Austin City Limits
12:30 am Call The Midwife
1:30 am Mr. Selfridge
2:30 am Orch. Of Exiles
4:00 am Truth About Exercise
5:00 am Market Warriors

TUESDAY 16

Midnight Tavis Smiley/NBR
1:00 am Market Warriors
2:00 am Antiques Roadshow
3:00 am Call The Midwife
4:00 am Mr. Selfridge
5:00 am Truth About Exercise

WEDNESDAY 17

Midnight Central Park Five
1:00 am Tavis Smiley/NBR
2:00 am Central Park Five
4:00 am In Performance
5:00 am Antiques Roadshow

THURSDAY 18

Midnight Tavis Smiley/NBR
1:00 am Nature: Dark World
2:00 am NOVA: Australia
3:00 am Guts With M. Mosley
4:00 am Wonder Women
5:00 am In Performance

FRIDAY 19

Midnight Tavis Smiley/NBR
1:00 am This Old House Hour
2:00 am Central Park Five
4:00 am Nature: Dark World
5:00 am NOVA: Australia

SATURDAY 20

Midnight Tavis Smiley/NBR
1:00 am Washington Week
1:30 am Need To Know
2:00 am We'll Meet Again
3:00 am Havana, Havana
4:00 am In Performance
5:00 am This Old House Hour

SUNDAY 21

Midnight The Best Of WNIT

MONDAY 22

Midnight Call The Midwife
1:00 am Mr. Selfridge
2:00 am Bletchley Circle
3:00 am Central Park Five
5:00 am Mr. Selfridge

TUESDAY 23

Midnight Tavis Smiley/NBR
1:00 am Market Warriors
2:00 am Antiques Roadshow
3:00 am Call The Midwife
4:00 am Bletchley Circle
5:00 am Mr. Selfridge

WEDNESDAY 24

Midnight Tavis Smiley/NBR
1:00 am Dust Bowl Pt. 1
3:00 am Frontline
4:00 am The Island President
5:30 am Fort Niagara

THURSDAY 25

Midnight Tavis Smiley/NBR
1:00 am Nature: Jungle Eagle
2:00 am NOVA: Australia
3:00 am Secrets/Bugging Soldiers
4:00 am Dust Bowl Pt. 1

FRIDAY 26

Midnight Tavis Smiley/NBR
1:00 am This Old House Hour
2:00 am Dust Bowl Pt. 1
4:00 am Secrets/Bugging Soldiers
5:00 am Antiques Roadshow

SATURDAY 27

Midnight Tavis Smiley/NBR
1:00 am Washington Week
1:30 am Need To Know
2:00 am Carousel
4:30 am Sky Island
5:00 am This Old House Hour

SUNDAY 28

Midnight Nature: Jungle Eagle
1:00 am NOVA: Australia
2:00 am Frontline
3:00 am The Island President
4:30 am Sky Island
5:00 am Washington Week
5:30 am Need To Know

MONDAY 29

Midnight Call The Midwife
1:00 am Mr. Selfridge
2:00 am Bletchley Circle
3:00 am Carousel
5:30 am Ribbon Of Fire

TUESDAY 30

Midnight Tavis Smiley/NBR
1:00 am Antiques Roadshow
2:00 am Antiques Roadshow
3:00 am Call The Midwife
4:00 am Bletchley Circle
5:00 am Mr. Selfridge

NBR = Nightly Business Report





SOMETHING NEW FOR SEASON 2!

Experience Michiana premiered on March 19, 2012 and has been a spectacular success ever since. Over 1,000 guests have appeared on the program, hosted by Gordy Young and produced by Kelsy Zumbrun. As the popular weeknight show begins its second year, each week on the Friday evening editions of the show, host Gordy Young will be joined by a different guest co-host.

Some of the special guest co-hosts scheduled to appear on Fridays include WHME Sports Director Chuck Freeby, *Michiana Crime Stoppers'* Cindy Kilgore, motivational speaker Charlie Adams, webcast host Jason Eric Mumaw and WNIT's own *Dinner and a Book* host Gail Martin.

"I'm looking forward to interacting with different co-hosts every Friday," Young stated recently. "Each co-host will bring a different kind of energy to

the program, and it will also give us an additional opportunity to highlight all the fun things happening all around our area as the weekend begins...this will be fun!"

In addition, the Friday "Weekend Editions" of *Experience Michiana* will be more focused on highlighting the many fun family activities, events and entertainment throughout the WNIT viewing area each weekend.

Experience Michiana airs weeknights at 6:30pm on WNIT channel 34.1 and at 8pm on WNIT In-Focus 34.2.

EXPERIENCE
MICHIANA

MEMBERSHIP CORNER

March 2013 Spring Membership Campaign

WNIT's Spring Membership Campaign begins Friday, March 1 and runs through Sunday, March 17. Our on-air Membership Campaigns remain the most effective way of encouraging viewers to join the WNIT family of supporters. While these drives represent less than two percent of our annual broadcast hours, they provide WNIT with the majority of revenue required to purchase and produce the regular and local programming enjoyed by everyone throughout northern Indiana and southwestern Michigan.

So get ready to experience an interesting and informative line-up of special programs for the entire family. And be sure to tell your family and friends why you think supporting WNIT is important.

It's Viewers Like You who make the transition to a contributing member of WNIT who make a difference to everyone in our community. THANK YOU for making that transition and supporting WNIT!

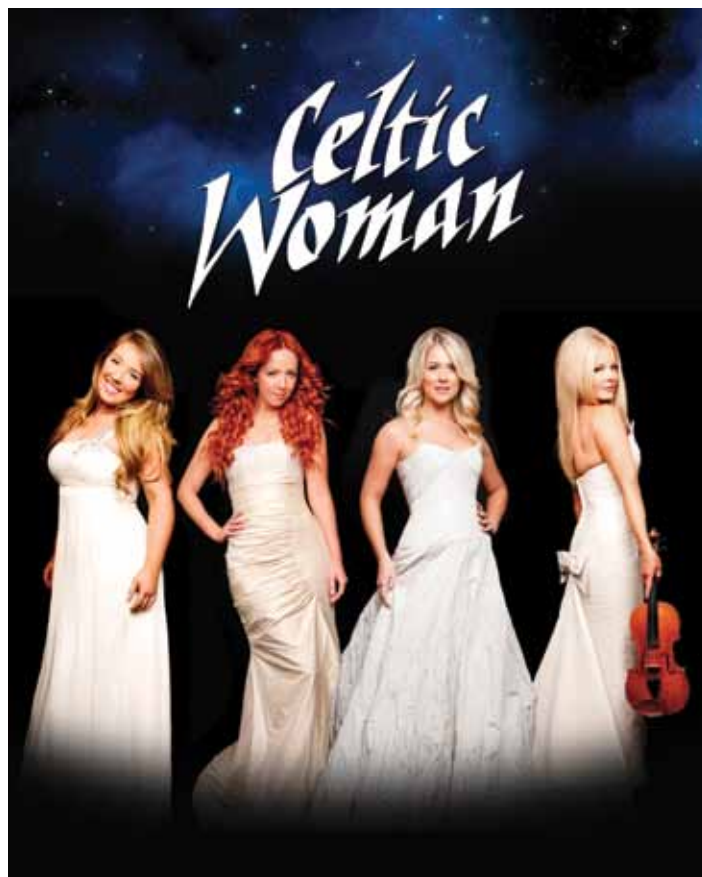
Thank You Gifts

If you requested a thank-you gift with your membership contribution, you can expect it to arrive four to six weeks after we process your payment. If you have a question or inquiry about your thank you gift, please send an email to cmccraner@wnit.org or jschloss@wnit.org with Thank You Gift in the subject line.

Your Chance for Great Seats to Celtic Woman!

Time is running out! WNIT has the best seats in the house for Celtic Woman appearing at the Morris Performing Arts Center on Tuesday, April 9. For one night only, Michiana favorite Celtic Woman brings to South Bend a spectacular music experience sure to delight folks of all ages.

For more information on tickets, go to wnit.org or call 574.675.9648.



THINK YOU HAVE TALENT?



Rising Star



*Dedicated to the memory of
Kurt Simon*

**WE'LL BE THE JUDGE OF THAT.
SHOW US WHAT YOU'VE GOT.**

So ... you're a stand-up comedian. A singer. Dancer. Juggler. Maybe a ventriloquist. Whatever your talent, WNIT is looking for the area's rising stars and we want to hear from you. Just go to wnit.org for information and a downloadable audition request. Fill out the form, then show us what you've got with a video and send it as a DVD or website link.

If our judges are impressed, you'll be invited to advance to the next round, a live appearance in front of our judges at one of five regional locations throughout Michiana. Then 25 finalists will be selected for the final round to be broadcast live on WNIT July 29 – August 2. We're going to find Michiana's Rising Star. Who knows? It could be you!

**FOR MORE INFORMATION
GO TO WNIT.ORG**

Entries due by March 31

Enroll in WNIT Kids Club Today!

Join or renew at \$50 and you can enroll your children or grandchildren in WNIT Kids Club. Join or renew at \$75 and above and also receive the WNIT MemberCard offering 2-for-1 discounts at area restaurants, museums, attractions and online stores and shopping. WNIT Kids Club members can also receive complimentary or special discounted tickets to children's performances at area venues. Two age levels are offered for WNIT Kids Club participants – Little Kids Club – ages 1 to 6 and Big Kids Club – ages 7 to 12.

Each kid receives an age appropriate WNIT Kids Club backpack with a variety of PBS® children's items and activity sheets. A welcome folder for parents features information, references and ideas to help children learn and grow. During their birthday month, children will be included in an on-air birthday greeting, and will receive a birthday postcard, a birthday surprise in the mail, as well as a card to redeem at Dainty Maid Bake Shop for a free 8" single layer birthday cake. Upon renewal of a kid's WNIT Kids Club membership, each kid receives an age appropriate book and a coupon for a free Papa John's personal pizza as our way of saying *Thank You*.

WNIT Kids Club members and their families will also be invited to an annual party to be held at kid-friendly locations throughout Michiana. Children will have an opportunity to have their photo taken with PBS personalities such as Clifford and The Cat In The Hat and participate in fun-filled games and activities.

Enroll your children or grandchildren by clicking the Kids Club button under the *Support It* tab on our website, wnit.org or by calling the Kids Club team at 574-675-9648.



HAPPY BIRTHDAY TO WNIT KIDS CLUB MEMBERS!

NAME	AGE	NAME	AGE
Kylie Althoff	11	Micah Peterson	8
Merlin Bellinger	5	Lucy Pierce	3
Isaac Free	6	Kadin Schrock	8
Mia Graziani	6	Myra Schrock	8
Radar Hill	1	Myles Slott	2
Madelyn Kinsler	1	Theodore Slott	2
Silas Kubicki	11	Everett Smith	3
Aidan Kurdelak	4	Joshton Szczepanski	9
Kia Kurtz	11	Liam Wagner	6
Eleanor Leniski	1	Grace Wechsler	6
Natalie Leniski	7	Isaiah White-Stevens	9
Nathan Peterson	10		

"I'm helping

to give someone that I'll never meet the opportunity to be as successful as I've been."

Ed Mapp believes that PBS opens new worlds for everyone. That's why he's included PBS in his will. If you are planning to include charitable interests in your plan, please consider making WNIT part of your lasting legacy.



Find out how you can plan a gift

Contact Joanne Schloss at 574.675.9648 ext. 311 or jschloss@wnit.org



Join or Renew Today!

Already Support WNIT? Refer a Friend!

Please mail this form with your gift to: **WNIT Public Television**, P.O. Box 7034, South Bend, Indiana 46634

Or join online at WNIT.org

Questions? Call us at 574.675.9648

Yes, I would like to support WNIT!

Name _____

Address _____

City/State/Zip _____

Phone _____

E-mail _____

Please select membership level:

\$35 WNIT Senior Member

\$50 WNIT Member

\$75 WNIT MemberCard

\$150

\$250

Other \$ _____

Payment Method:

Please charge my:

VISA MasterCard

Discover American Express

Card # _____

Expires _____

Signature _____

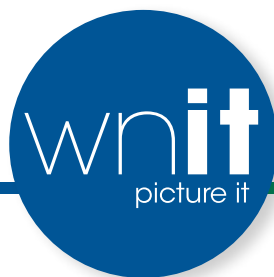
My Check is enclosed, payable to WNIT Public Television

Please bill me:

Monthly Quarterly

Please automatically renew my gift annually using this payment method

HONOR ROLL MEMBERS



WNIT would like to recognize the following Honor Roll Members for their continued support!

30 YEARS

Victoria Gutschenritter

25 YEARS

Darlene Adkins
Richard and Anna Mae Anderson
Harold and Jane Atkins
Alice and John Bentley
Johanna Birutschenko
Lois Campbell
Alan Camren
Geoffrey Church
Glen and Joyce Cook
Rosemary and Fred Crowe
Dr. and Mrs. Francisco Deogracias
Gregory and Mary Downes
William and Marilyn Fortin
Gerald and Joan Gerard
Sonia Gernes
Marilyn Gosling
Scott Graybill
Joy A. Harnish
Eudora and Greg Hartzler
Thomas and Hazel Hufziger
Mr. and Mrs. Frank Hughes
Patricia K. Johnson
Garrett Kazmierski
Peter C. Kesling
Gunter and Erika Kison
Jeanne and William Klem
Joyce and William Kretz
Betty Laramore
Claire Luther
Joseph Maguire
Holly Martin
Debra and Thomas McArthur
Mr. and Mrs. Chuck McFarland
Ms. Shirley Muldoon
William and Betty Pratt
Mary S. and James W. Rasp
Naomi and Phillip Rea
Myron and Thelma Roll
Rev. Edward Ruetz
Margaret and Don Sappington
Loraine and Drexell Simpson
Maria and Tom Slager
Mary E. Stanfield
Patsy and Charles Stewart

Richard Strasser
John T. Svendsen
Nancy Taylor
Dale Whitehead
Martyn A. and Kathleen Wills
Bettie and Lewis S. Woods

20 YEARS

Richard Atkinson
Doris Bohn
Harold Bontreger
Betty M. Briggs
Cristeen and James Causey
Evelyn and Harold Farmer
Norman and Nancy Neal Forrest
Stanley S. Garber
Leslie and William Gittin
Ms. Nancy Grimm
Mr. and Mrs. William Klenke
Helen Kloswick
Ann and James J. Kolata
Virginia Kraft
Christine and Frederick Kucklick
Ms. Gloria Lacy
Deborah Longworth
Mary Lucchese
Elizabeth Lutz
Thomas and Gloria Marullo
Doug and Lauren Mast
Barbara and Michael McGath
Gail and Adeline North
Neil and Diane Orians
Margaret Platts
Max and Jean Reed
Donna and Mark Richter
Anne Schmitz
Jane E. and Tim D. Short
Treva Vaksvik
Peter Walshe
Robert White

15 YEARS

John and Eva Bonitati
Doris and Jerry Carpenter
Julian A. and Susan Dhoore
Edward Eisele
Brenda and Doug Farmwald
Rose and John Conrad

Dr. and Mrs. Michael Freid
Cynthia and John Harville
Wayne and Barbara Hentsch
Don D. and Betty Johannesen
C.V. Jones
Mr. Robert Judd
Marilyn Kalamaros
Robert Kenaga
David and Kay King
Eric and Janet Leedy
Rudolph Martens
Timothy and Helen McNeill
Anila and Jim Mondabaugh
Fred Oppenhuisen
Jerry Rankert
Karin Rettinger
Stanley and Linda L. Rupnow
Stephen and Barbara Seall
Walt Skibbe
Mary Louise Stauffer
Larry and Marcia Towne
Woodrow and Margaret Whidden
William and Norma Wilson

10 YEARS

Betty Beals
Barbara Byrum
Galen P. Cawley
Betty Cukrowicz
Joan Davis
Jillea Dickinson-Fry
Marcia Hartleb
Deborah and Melvin Jacobson
Rebecca and Michael Kubacki
Marilyn E. Kuskye
Bill and Phyllis Miller
Don and Diann Nelson
Mary Owens
Mr. and Mrs. Cliff Oyer
Gene R. Pendl
Joann Smith
John Smith
Paulette and Gregory Steinke
Carole Streeter
Mark D. Stucky
Kathleen Whitmer

5 YEARS

Melody Asper
Patricia Austin
Joseph Berg
Edna Delaurelle
Lillian Desimone
Michael Dudek
Don Fessenden and Sara Maurer
John Fisher
Yates and Ida Forbis
James and Karen Frick
Nancy Gleim
Elayne Haaker
Patricia A. Haden
Robert Hatch
Anna Hedl
Philip Kalamaros
Evelyn Kerby
Linda Kintner
Robert and Ann Kuntz
Albert Lane
Richard Lynch
Cindy and Scot McCraner
Carolyn McGuire
Thomas McNally
Marian McQuade
Louise Moore
John Nash
Susan Neuffer
Craig Norman
Margaret Nurton
Lesla Piech
Terri Rickel
Ernest Schrader
William and Bonnie Shannon
Joyce Stombaugh
Elmer and Dolores Tepe
Richard P. Thomas
Dorothy Ueck
Monica Yoder

WNIT SUPPORTERS

- 1st Source Bank**
Antiques Roadshow
BBC World News
Holiday Programming
Inside Indiana Business
Masterpiece: Downton Abbey Season 3
PBS Election Coverage
PBS NewsHour
- 32 Pearls Family Dentistry**
The Cat in the Hat Knows a Lot about That!
History Detectives
- Alick's Home Medical**
Antiques Roadshow
Holiday Programming
Lawrence Welk
Miscellaneous Programming
- Aladdin's Eatery**
Miscellaneous Programming
- Ancilla College**
Inside Indiana Business
PBS NewsHour
- The ArtsEverywhere Initiative of the Community Foundation of St. Joseph County**
Miscellaneous Programming
- Barnes & Thornburg**
BBC World News
Business Programming
PBS NewsHour
- Carmela's at Macri's**
Miscellaneous Programming
- Cassady, Neeser & Brasseur**
BBC World News
PBS NewsHour
- C.E. LEE Decorating Center**
Hometime
- Center for History**
Masterpiece: Downton Abbey Season 3
- Center for Hospice Care**
Antiques Roadshow
- Cochran Family Dentistry**
Children's Programming
- Cosimo & Susie's A Bit of Italy**
Lidia's Italy in America
- Curious Kid's Museum**
Children's Programming
- Debbie Werbrouck's School of Dance**
Children's Programming
- D & W, Inc.**
Children's Programming
- Elkhart Christian Academy**
Children's Programming
- Elkhart Civic Theater**
Miscellaneous Programming
- Elkhart County Parks - 30th Annual Bonneyville Celebration**
Miscellaneous Programming
- Elkhart County Parks Historical Society - Gathering at Five Medals**
Miscellaneous Programming
- Elkhart County Symphony**
Miscellaneous Programming
- Ernestine Raclin School of the Arts - IUSB**
Miscellaneous Programming
- Explorations Toys**
Children's Programming
- Faegre Baker Daniels LLP**
PBS NewsHour
- Family Dental Health**
Miscellaneous Programming
- Friends School and Day Care**
Children's Programming
- Rod & Carol Ganey**
Charlie Rose
Sesame Street
- The Gibson Foundation**
Antiques Roadshow
- Gibson**
Antiques Roadshow
- Steven A. Goldberg, CPA**
Business Programming
Miscellaneous Programming
Tax Tips Interstitials
Washington Week
- Good Neighbor Pharmacies**
Lidia's Italy
Masterpiece
- Goodwill Industries**
Children's Programming
Women's Programming
- Goshen Antique Mall**
Antiques Roadshow
- Greencroft Communities**
Miscellaneous Programming
- Growing Kids Learning Centers**
Children's Programming
- Gymnastics Michiana**
Children's Programming
- Carla and Steve Hartz**
Miscellaneous Programming
- Hearth & Home**
Home Improvement Programming
- Holy Cross Village at Notre Dame**
Call the Midwife
Masterpiece: Downton Abbey Season 3
Great Performances
NOVA
- Homan Lumber Mart Inc.**
Hometime
- Hospice Foundation**
Miscellaneous Programming
- House of Andala**
Hometime
- Hovenkamp's Produce**
Children's Programming
Cooking Programming
- Indiana Community Bank**
Miscellaneous Programming
- Indiana University South Bend**
Governor's Arts Awards
- Jeanette's Fabric Boutique**
Sewing with Nancy
- Jordan Automotive**
Miscellaneous Programming
- Brian King, DDS**
Miscellaneous Programming
- La Candy Shoppe**
Bake Decorate Celebrate
- Lake City Bank**
Inside Indiana Business
- Lanser's, The Natural Way**
Daniel Tiger's Neighborhood
Sesame Street
- Laven Insurance**
BBC World News
- Lighthouse Fibers**
Children's Programming
- Lippert Components**
Children's Programming
- Manufacturing Technology, Inc.**
Children's Programming
- Martin's Super Markets**
Nature
- McDonald Physical Therapy & Sports Rehabilitation Center**
BBC World News
Black History Month
Holocaust Programming
- Memorial Hospital of South Bend**
Miscellaneous Prime Time
- Michiana Eye Center**
Miscellaneous Programming
- Mid-City Supply Company**
Hometime
- Dr. Dane & Mary Louise Miller Foundation**
History Detectives
Inside Indiana Business
News Brief
Nightly Business Report
- Nanovic Institute for European Studies - Notre Dame**
Masterpiece: Downton Abbey Season 3
- Northern Box Company**
Antiques Roadshow
- Notre Dame Federal Credit Union**
Miscellaneous Prime Time
- Nunemaker's Coin Shop, LLC**
Miscellaneous Prime Time
- Pain Management Group**
Miscellaneous Prime Time
- Patchwork Dance Company**
Miscellaneous Programming
- Peacock & Company**
Miscellaneous Programming
- Pfeifer, Morgan & Stesiak Attorneys At Law**
Austin City Limits
Jack Horkheimer: Stargazer
- Barb & John Phair**
Miscellaneous Programming
- Pike Lumber**
Michigan Out-Of-Doors
- Press Ganey Associates**
The Cat in the Hat Knows a Lot about That!
- Public Broadcast Marketing, Inc.**
BBC World News
PBS Newshour
This Old House
- Pumpkinvine Quilting**
Quilting Programming
- Dr. Kelly Puster**
Children's Programming
- River Bend Hose**
Motorweek
- Robin Hood Players Theatre Company**
Masterpiece: Downton Abbey Season 3
- Ruthmere**
Masterpiece: Downton Abbey Season 3
- Saint Joseph Regional Medical Center**
Inside Indiana Business
PBS Newshour
- Salvation Army / Kroc Center**
Children's Programming
Miscellaneous Prime Time
News Programming
- Sew Creative Threads**
Sew It All
Sewing with Nancy
- Shelton's Farm Market**
Children's Programming
- Kurt Simon & the Jewish Community of St. Joseph County**
BBC World News
Charlie Rose
European Journal
Globe Trekker
History Detectives
McLaughlin Report
Miscellaneous Programming
Off the Record
PBS NewsHour
Rick Steves'
- South Bend Career Academy**
Children's Programming
- South Bend Civic Theatre**
Miscellaneous Programming
- South Bend Farmer's Market**
Miscellaneous Programming
- South Bend Medical Foundation**
McLaughlin Group
Memorial Day Programming
Miscellaneous Programming
PBS NewsHour
- South Bend Symphony**
Masterpiece
Miscellaneous Programming
PBS NewsHour
- South Bend Warehousing & Distribution**
Miscellaneous Programming
- Southwest Michigan Symphony Orchestra**
Miscellaneous Programming
- Stitch 'N Time Fabrics**
Quilting Arts
- Teachers Credit Union**
Biz Kids
Nightly Business Report
Travel Programming
- The Dental Center**
Children's Programming
- The Heritage Museum and Cultural Center**
Children's Programming
- The Lerner Theatre**
Miscellaneous Programming
- The Quilt Shop**
Children's Programming
- The Quilting Loft**
Sew It All
Fons & Porter Love of Quilting
Quilting Arts
Sewing with Nancy
- The Troyer Group**
Nightly Business Report
PBS NewsHour
- The Village at Winona**
History Detectives
Inside Indiana Business
News Brief
Nightly Business Report
Nightly TV/Woodrow Wilson
Science Programming
- Tony's Quality Shoe Repair**
Miscellaneous Programming
- Treat's Squire Shop**
Miscellaneous Programming
- Tuesley, Hall, Konopa, LLP**
Inside Indiana Business
Masterpiece Classic
- University of Notre Dame DeBartolo Performing Arts Center**
Miscellaneous Programming
- Wagon Wheel Theatre**
Children's Programming
- Jason Ward and Family**
Children's Programming
- YMCA of Michiana**
Miscellaneous Prime Time
- Yoder's Department Store**
Fons & Porter Love of Quilting
- Zimmer**
NOVA
- BLACK HISTORY MONTH SUPPORTERS**
1st Source Bank
Alick's Home Medical
Andre Gammage, Attorney
Barnes & Thornburg, LLP
Bethel College
Biomet
Center for Hospice & Palliative Care
Deb Childs - State Farm
Dick Moore, Mayor of the City of Elkhart
Elkhart County Prosecutor's Office - Curtis Hill
- Ernestine M. Raclin School of the Arts - IU South Bend
Indiana University South Bend
IUSB Civil Rights Heritage Center
Martin's Super Markets
Mayor Dave Wood and the City of Mishawaka
Mayor Pete Buttigieg and the City of South Bend
McDonald Physical Therapy and Sports Rehabilitation
Nyloncraft
Pfeifer, Morgan & Stesiak
PNC Bank
Real Services Simply Catering To You
Saint Joseph Regional Medical Center
South Bend Career Academy
South Bend Drifters
South Bend Heritage Foundation
South Bend Medical Foundation
South Bend Tribune
Steven A. Goldberg, CPA
Talented Tenth Warehousing
Teachers Credit Union
YMCA Urban Youth Services
- BUSINESS CLUBS**
Platinum Chairman's Club (\$5,000+)
Pokagon Band of Potawatomi
Chairman's Club (\$3,000)
Kurt Simon
Teachers Credit Union
President's Club (\$1,500)
Jordan's Mishawaka Transfer
Corporate Club (\$800)
Logan Community Resources, Inc.
Press Ganey Associates
South Bend Medical Foundation
Business Honor Roll (\$300)
Mossberg and Company, Inc.
Sylvester & Tessie Kaminski Foundation
The Troyer Group
- KID'S CLUB AND RAISING READERS**
John Anderson Foundation
Better World Books
Dainty Maid Bake Shop
Lake City Bank
Meijer
Papa John's
PNC Bank
St. Joseph County Parks
Kurt Simon
Sylvester & Tessie Kaminski Foundation
University Park Mall
YMCA of Michiana
- LOCAL PRODUCTIONS**
Ask An Expert
Beacon Health System
Cancer Care Partners
Peacock & Company
The Elkhart Clinic
- Dinner & a Book**
The Rex and Alice A. Martin Foundation
- Additional Dinner & a Book Supporters:**
Dr. Dane & Mary Louise Miller Foundation
The Village at Winona
- Economic Outlook**
Ancilla College
Bingham & Loughlin, P.C.
Chamber of Commerce of St. Joseph County
Lake City Bank
- The Greater Elkhart Chamber of Commerce
Tuesley, Hall, Konopa, LLP
Experience Michiana
Amish Acres
Ancilla College
Cassady, Neeser & Brasseur
Community Foundation of St. Joseph County
Elkhart County Parks
Elkhart General Hospital
Forever Learning Institute
Howard Performing Arts Center- Andrews University
Ivy Tech Community College
Lake City Bank
Michigan Humanities Council
Riverview Manor
Ruthmere Museum
Saint Joseph Regional Medical Center
Kurt Simon
South Bend Medical Foundation
The Lerner Theatre
The Village at Winona
Trinity School at Greenlawn
Tuesley, Hall, Konopa, LLP
Wagon Wheel Theatre
Zolman Tire
- Harbor Lights**
1st Source Bank
John & Elizabeth Allegretti
Ken Ankl & Ann Miller
Anonymous
Benton Charter Township
Berrien Community Foundation (Thieneman)
Larry & June Bowman
Celebration Cinema
Cornerstone Alliance
Bob & Cindy Ehrenberg
Curtis & Kimberly Eschler
Tim Flynn & Dixie Inocenzio
Barbara Globensky
Honor Credit Union
Hopp Family Foundation
Ken & Janet Kleinhample
Lakeland Healthcare
Jeanette Leahy
Lexus of Mishawaka
Lions Club of Benton Harbor
Debra Panozzo
Joan M. Smith/J. Muller Smith
Thomas Starks
The Charms, Inc.
United Federal Credit Union
Vail Rubber Works
David & Barbara Whitwam
- Michiana's Rising Star**
Community Foundation of St. Joseph County
Lake City Bank
Lexus of Mishawaka
Nyloncraft
Kurt Simon
South Bend Medical Foundation
- Outdoor Elements**
South Bend-Elkhart Audubon Society
- Trailblazers**
1st Source Bank
- PROMOTIONAL SUPPORT**
Alpha Graphics
Duley Press
Express Press
Mossberg & Company, Inc.
Rink Printing

Information correct as of press date. For a full listing of program sponsors, please contact WNIT.

SUPPORTER SPOTLIGHT

BETTY LARAMORE

Over the years, Betty Laramore and her late husband, Bill, spent countless hours driving from Plymouth to Elkhart to help WNIT in any way they could. She was the first producer of "Politically Speaking," where she set a very high standard for the program. Betty also contributed to on-air membership drives, chaired the major gifts portion of the annual auction and helped fund the purchase of the first Lawrence Welk programs, which set record viewing numbers at WNIT. In addition, she represented WNIT on the Indiana Public Broadcasting Board by serving as its president. Along with supporting many special events and the annual auction, Betty is now a member of the WNIT Directors' Circle. WNIT salutes Betty Laramore for her many years of service to public television.



Betty Laramore

DIRECTORS' CIRCLE



The WNIT Directors' Circle represents a very dedicated and select group of individuals who, by their commitment, contribute to the total annual support which is the foundation of WNIT's operating budget. These essential annual contributions make possible the great programs that everyone in Michiana enjoys.

Diamond Level (\$10,000 +)

Ed and Sue Hiler

Craig D. Sullivan and
Cynthia L. Harris

Marjorie H. Wilson

Platinum Level (\$5,000 +)

Arthur J. Decio

Irions Foundation, Inc.

Dr. Dane and Mary Louise Miller

Welter Foundation

Gold Level (\$2,500 +)

Anonymous (1)

Susan and David Findlay

Margaret and Albert Gutierrez

Susan Kay Hintz

James W. and Sally F. Hubbard

Glenn and Patty Killoren

Chris and Carmi Murphy

Perry and Ida Reynolds Watson III

Ernest and Gerda Zeller

Silver Level (\$1,000 +)

Anonymous (1)

David and Billie Bankoff

Barbara K. Clausen

Monali and Promit Das

Jack and Phyllis Davis

Katy and Tim Demarais

William W. Erwin

Tom and Susan Fischbach

Kathy and George Freese

Craig and Connie Fulmer

Steven and Susan Funk

Van, Larry & Bill Gates and
Harry Shaffer Family

Van and Jean Gates

Dave and Ginny Gibson

William and Leslie Gitlin

Maggie and Steve Goldberg

Dr. Elmer Graber

Anne Hillman

Edward M. Jordanich

Najeeb and Nancy Khan

Rebecca and Michael Kubacki

Brian and Ginger Lake

Betty Laramore

Frank and Marsha Martin

Christine Maziar

V. Richard and Jane Miller

Dr. Laura L. Morris

Susan Ohmer and Donald Crafton

Ernestine M. Raclin

Donna and Mark Richter

The Honorable and Mrs.
James W. Rieckhoff

Judith Robert and Thomas

J. Kapacinskas

Pat and Sue Ruszkowski

Mr. and Mrs. William

J. Schmuhl, Jr.

Cari Shein

James F. and Sherry L. Smith

Tom and Joyce Sopko

Perry Stow and Andrea
Mather-Stow

Mike and Dena Wargo

Barbara Warner

Jane J. Warner

Peggy Weed

Michael and Julie Yates

Bronze Level (\$500 +)

Anonymous (2)

Eric and Sandy Amt

Dottie and Tom Arnold

Stephen and Nancy Ball

Bruce and Linda Bancroft

Stuart and Paula Barb

Brian and Jeannelle Brady

Edward and Carla Chester

Gary Cornette and Marsha Miller

Marianne Corr

Thomas and Dorothy Corson

Rosemary and Fred Crowe

Ann and Fred Dean

Robin Douglass

Greg and Mary Downes

Thomas and Elizabeth Eisele

Ken and Mary Eme

Irene Eskridge

Dr. Frederick J. Ferlic

Tony Fitts and Ramona Payne

Stephen and Barbara Fredman

Jody and Mike Freid

Joan and Gerald H. Frieling, Jr.

Ruth and George Friend

Rodney and Carol Ganey

Mary Beth and Greg Giczi

Mr. and Mrs. John Goebel, Jr.

Dr. Paul and Margie Goldwin

Donald and Lynn Groenleer

James R. Hardesty

Janice and Larry D. Harding

Denise and Angel Hernandez

Tom and Eileen Hughes

Leonard and Joann Isban

Carol and Craig Kapson

James and Christine Kelly

Gretchen and Dean Kimble

Barbara and Donald T. Kindt

Gunnel B. Lofgren

Jerry and Becky Lutkus

Mr. and Mrs. Philip Lux

Colin and Jane Maiorano

Gail and Robert Martin

Rex and Alice Martin

Laurence and Barbara McHugh

Tom and Shari Mellin

Brad and Mickey Miller

Jeffrey Miller

Pat and Carol Moody

Carol Ann Mooney and
George Efta

Kevin and Anita Morrison

Mary Naquin

Philip and Mary Newbold

Nell Newton

Lida Thompson Norris

Barb and John Phair

Michael and Amy Phend

Nicholas and Jennifer Recchio

Dr. Rob and Lee Riley

Maritza Robles

Fred and Chris Rowe

Judy and Bob Schmuhl

Richard and Christine Siegrist

Tom and Maria Slager

Sonja K. Smith

Carl and Rita Schobert Snyder

Oliver C. Songlingco, M.D., P.C.

Dr. David Taber and

Stephanie Scharf

Douglass J. and Anna

M. Thompson

Paul D. and Mary H. Tipples

Jeff and Phid Wells

Dorothy and Dar* Wiekamp

Joseph and Barbara Wind

Douglas and Janette Yoder

Julia Zahler

*Deceased Charter Director



WNIT Television Planner
P.O. Box 7034
South Bend, IN 46634-7034

PERIODICAL

Visit us at



Find us on



DANIEL O'DONNELL

FROM THE HEARTLAND
MARCH 9 & 13

Beloved Irish crooner Daniel O'Donnell and his melodic voice return to WNIT in this new concert special filmed in Iowa. Exuding the same passion and unique sense of humor that have fascinated audiences for years, O'Donnell sings, dances and charms his way into viewers' hearts with a mix of country, pop hits and fan favorites.