

PLANNER



Michiana's bi-monthly Guide to WNIT Public Television
Issue No. 6 November – December 2013



MEET THE REAL JACK KENNEDY

AMERICAN
EXPERIENCE

JK

NOVEMBER 11 & 12 9PM



BOARD OF DIRECTORS

CHAIR

David M. Findlay

VICE CHAIR

Rodney F. Ganey
Ida Reynolds Watson

PRESIDENT AND GENERAL MANAGER

Greg Giczi

TREASURER

Kevin J. Morrison

SECRETARY

Dr. Susan Ohmer

DIRECTORS

Thomas G. Coley, Ph.D.
Kathryn Demarais
Irene E. Eskridge
William A. Gitlin
Tracy D. Graham
Albert L. Gutierrez
James W. Hillman
Najeeb A. Khan
Glenn E. Killoren
Paul A. Marsh
Ryan Matthys
Christine M. Maziar
Mary Louise Miller
Pat Moody
Jill Richardson
Maritza Robles
Cari Shein
Thomas E. Slager
James M. Summers
Michael J. Wargo
Patrick Welch

CHARTER DIRECTORS

Mr. Arthur J. Decio
Mr. Jerry Hammes
Mrs. Ernestine M. Raclin
Mrs. Jane Warner
Mr. Dar Wiekamp*

HONORARY LIFE DIRECTOR

Carmi Murphy

*Deceased Charter Director

A MESSAGE FROM GREG GICZI President and GM, WNIT Public Television



Happy Holiday Season, WNIT Supporters —

It's the time of year when it seems like we celebrate something every few weeks. That's a good thing! Michiana has a rich cultural diversity and it is a lot of fun to learn and experience one another's culture. There's nothing wrong with having something to celebrate every few weeks.

I hope you've noticed a new capability your Michiana PBS station has launched. We now have the ability to broadcast "live" from locations throughout our region – Elkhart, Warsaw, St. Joseph-Benton Harbor, Goshen, Niles, Rochester, (insert your city name here!), and all points in between. We'll be using the new equipment to promote regional activities and to be better in touch with our communities. The equipment wasn't inexpensive, and I wish to thank a host of WNIT donors and organizations who put this package together. Fifty percent of the funding came from the Wells Fargo Trust, the Frederick S. Upton Foundation, Graham-Allen Partners, Peggy Weed and David Weed, the Garatoni Family Foundation, the late Kurt Simon, Ann and Fred Dean, Dorothy and Thomas Corson, and Lorrie and William J. Schmuhl. The remaining 50 percent was accomplished with a matching grant from The Welter Foundation. Thank you, everyone!

Oh my, do we have some wonderful programs coming up. Your *Planner* is filled with highlights. Some of the shows that have caught my attention are the several JFK programs WNIT will feature in November, and the Barbra Streisand in Brooklyn special in December. Perfect viewing for an early-winter evening.

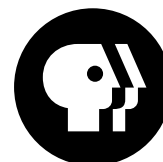
Sometimes, this time of year is called the *Season of Giving*. Whether you are moved by the spirit of the holidays or simply need a few more tax deductions, please consider including a year-end gift to WNIT. We certainly have a wish list and would love for you to make our dreams come true.

Have friends who are not already members? Please encourage them to join us. We have a membership drive coming up November 29th through December 8th. During those dates we will feature special programming and thank-you gift opportunities for making a membership pledge. Look for me – I'll be answering phones for a night or two. Maybe I will answer your call?!

Have fun the next two months. Celebrate often! Renew family bonds. In whichever tradition you honor the upcoming holidays, please accept the best wishes of all of us at Michiana Public Broadcasting. We appreciate your viewership and support. A day never goes by when we are not thankful for you.

Happy Holidays!

Greg Giczi
President & General Manager



WHAT'S INSIDE?

Worth Watching November	4	Production News	20
Worth Watching December	8	Membership Corner	22
Primetime November	12	WNIT Kids Club	23
Primetime December	14	Honor Roll Members	25
Weekday Programming	16	WNIT Supporters	26
Weekend Programming	17	Supporter Spotlight	27
Overnight Programming	18	Directors' Circle	27

WNIT CHANNEL GUIDE

WNIT 34.1 ON COMCAST

Channel 191

Shown In High Definition

Channel 10

Indiana: South Bend, Mishawaka, Goshen, Bristol, Elkhart, Plymouth, Rochester, Middlebury, Jefferson Township, Wakarusa, Warsaw and eastern LaPorte County

Michigan: Edwardsburg, Niles, Buchanan, Cassopolis, Dowagiac, St. Joseph (city), Benton Harbor, Berrien Springs, Stevensville, and New Buffalo

Channel 4

Indiana: Argos, Bourbon, Bremen, Culver, Knox, Lakeville, LaPaz, Nappanee, North Judson, North Liberty, Syracuse, and Walkerton

Channel 11

Indiana: LaGrange County
Michigan: Constantine and White Pigeon

Channel 26

Indiana: LaPorte (city), western LaPorte County, Porter County and Valparaiso

WNIT 34.1 ON DISH & DIRECT SATELLITE PROVIDERS OR AT&T U-VERSE

Channel 34

Shown In High Definition

WNIT InFOCUS 34.2 ON COMCAST

Channel 371

Shown In Standard Definition

ROKU

WNIT is excited to announce that the much-anticipated PBS and PBS KIDS channels are now available on Roku! The PBS channel features videos from popular PBS programs. Once you activate the PBS channel and choose WNIT as your local station, you can stream content from WNIT's local productions, as well as short, web-original videos from Webby Award-winning PBS Digital Studios. With the arrival of PBS KIDS channel, junior streamers can enjoy full-length episodes and clips from great shows including *Curious George*, *Daniel Tiger's Neighborhood*, *Dinosaur Train*, *Super WHY!* and *The Cat in the Hat Knows a Lot About That!*

ON THE COVER

JFK: 50 YEARS LATER

During November, WNIT commemorates the 50th anniversary of President John F. Kennedy's death with several programs:

AMERICAN EXPERIENCE: JFK

Monday, November 11 and Tuesday, November 12, 9pm. A fresh assessment of the enigmatic man, his accomplishments and his unfulfilled promise, featuring interviews with Kennedy family members and historians.

NOVA: COLD CASE JFK

Wednesday, November 13, 9pm. A team of forensic experts employ sophisticated new technology to reconstruct and review the physical evidence: the weapon, the bullets and the wounds to provide new insights into the "single bullet theory."

SECRETS OF THE DEAD: JFK

Wednesday, November 13, 10pm and Friday, November 22, 10pm. This special tells the riveting story of the reporting from Dallas and the CBS Newsroom in New York, featuring archival footage of President Kennedy, Walter Cronkite and others who were there that day.

American Experience: JFK

Premieres November 11 & 12 at 9pm



WORTH WATCHING

NOVEMBER



Masterpiece Classic: The Paradise



Independent Lens: The Graduates

All programs are on both 34.1 and 34.2 unless noted.

SECRETS OF SELFRIDGES SUNDAY, NOVEMBER 3, 8PM

Two words are synonymous with Selfridges: luxury and London. However, Selfridges was the brainchild of an American — Harry Gordon Selfridge — whose life was depicted in the MASTERPIECE series “Mr. Selfridge.” The real, flamboyant Mr. Selfridge brought about a complete revolution in the way Londoners shopped, introducing a new American retail model that made shopping less a practical pursuit and more a luxurious adventure.

MASTERPIECE CLASSIC: THE PARADISE SUNDAYS, NOVEMBER 3 – 17, 9PM PART FIVE – NOVEMBER 17

Exotic lovebirds arrive at The Paradise to be sold as the latest attraction, and Denise struggles to keep her feelings for Moray to herself. Miss Audrey, seeing the telltale signs of love, advises her to keep quiet, but will Denise be able to hide her emotions?

MASTERPIECE CLASSIC: DOWNTON ABBEY, SERIES II SUNDAYS, 10PM

EPISODE FOUR – NOVEMBER 3

In the climactic battle of the war, Matthew and William go over the top to an uncertain fate. Vera plays a cruel endgame with Bates and Anna. And Daisy faces the severest test of her life.

Underwritten by 1st Source Bank, Center for History, Center for Hospice Care, Hartzler Gutermuth Inman Funeral Home, Indiana Trust & Investment Company, Nunemaker's Coin Shop and Nyloncraft

ANTIQUES ROADSHOW MONDAYS, 8PM AND REPEATS THURSDAYS, 10PM

“JUNK IN THE TRUNK 3” – NOVEMBER 4

ANTIQUES ROADSHOW packed a trunkful of treasures to share from the six cities visited during the Season 17 tour. “Junk in the Trunk 3” is a new episode with never-before-seen appraisals from ROADSHOW’s 2013 season, including a Myrtle Beach guest with a sports collection that would make any Celtics fan turn green with envy, a diamond and platinum ring in Corpus Christi, and in Rapid City, a valuable old book with a mysterious past that is valued at \$35,000 to \$50,000.

Underwritten by 1st Source Bank, Alick's Home Medical, Center for Hospice Care, Gibson, The Gibson Foundation, Goshen Antique Mall and Northern Box Company

“SURVIVORS” – NOVEMBER 18

Every antique is a survivor, but considering some have made it through exceptionally dangerous circumstances, it is amazing they survived at all. In this special episode, ANTIQUES ROADSHOW highlights a French Blue John urn that remains largely intact despite multiple gunshots, appraised for \$3,000 to \$5,000. Other highlights include a New Orleans Chess Table that held strong through Hurricane Katrina and hotel stationary — bearing the names of three of the four Beatles — that escaped a fiery end.

INDEPENDENT LENS MONDAY, NOVEMBER 4, 10PM

“THE GRADUATES”

This two-part special examines the many roots of the Latino dropout crisis through the eyes of six inspiring young students who are part of an ongoing effort to increase graduation rates for a growing Latino population. These student profiles offer a first-hand perspective on the challenges facing many Latino high school students, including over-crowded schools, crime-ridden neighborhoods, teen pregnancy and pressure to contribute to the family finances.



VISIT WNIT.ORG/PROGRAMS FOR MORE!



Jimi Hendrix: American Masters



Stephen Sondheim's Company with the New York Philharmonic

**THE AFRICAN AMERICANS:
MANY RIVERS TO CROSS**
TUESDAYS, NOVEMBER 5-26,
8PM

**“INTO THE FIRE (1861-1896)” –
NOVEMBER 5**

After Emancipation, African Americans sought to realize the promise of freedom — rebuilding families shattered by slavery; demanding economic, political and civil rights; even winning elected office — but a few years later, an intransigent South mounted a swift and vicious campaign of terror to restore white supremacy and roll back African-American rights.

**“MAKING A WAY OUT OF NO WAY
(1897-1940)” – NOVEMBER 12**

At the turn of the 20th century, a steady stream of African Americans left the South, fleeing the threat of racial violence and searching for opportunities in the North and West. Leaders like Ida B. Wells, W.E.B. Du Bois, Booker T. Washington and Marcus Garvey organized, offering different strategies to further black empowerment and equality. “The Harlem Renaissance” redefined how America saw African Americans — and how African Americans saw themselves.

“RISE! (1940-1968)” – NOVEMBER 19

African Americans who fought fascism in World War II came home to face the same old racial violence. In 1955, Rosa Parks refused to give up her seat on a city bus in Montgomery, Alabama, heralding the dawn of a movement of resistance, with Dr. Martin Luther King, Jr. as its public face. In 1968, Dr. King was assassinated, unleashing a new call for “Black Power” across the country.

**JIMI HENDRIX:
AMERICAN MASTERS**
TUESDAY, NOVEMBER 5, 9PM

Experience the pioneering guitarist Jimi Hendrix’s life and music through never-before-seen performance footage, archival interviews, photographs and family letters. The film features new interviews with Hendrix family members, band mates, Paul McCartney and others.

NATURE

WEDNESDAYS, 8PM

**“LOVE IN THE ANIMAL KINGDOM”
– NOVEMBER 6**

Animals dance, sing, flirt and compete with everything they’ve got to find and secure a mate. For many, the all-important bonds they share as a couple are what enable the next generation to survive. In this delightful, provocative look at the love life of animals, watch the feminine wiles of a young gorilla, the search for Mr. Right among a thousand flamingos, the open “marriages” of blue-footed boobies, and the soap opera arrangements of gibbons.

Underwritten by Martin’s Super Markets

**PBS ARTS FALL FESTIVAL:
GREAT PERFORMANCES**

**“STEPHEN SONDHEIM’S
COMPANY WITH THE
NEW YORK PHILHARMONIC” –
NOVEMBER 8, 9PM**

Legendary composer and lyricist Stephen Sondheim’s groundbreaking musical Company centers on Bobby, a confirmed bachelor celebrating his 35th birthday with his 10 closest friends (five couples). This 2011 New York Philharmonic concert production starring Neil Patrick Harris as Bobby won rave reviews.

WORTH WATCHING

NOVEMBER



Secrets of Althorp: The Spencers



JFK: American Experience

“RODGERS & HAMMERSTEIN’S OKLAHOMA!” – NOVEMBER 15

Still “doin’ fine” after 60 years, Rodgers & Hammerstein’s landmark American musical Oklahoma! is reborn in this film version of the Royal National Theatre of Great Britain’s award-winning production. The magic of the original London cast was captured in this deluxe film adaptation, which includes a sensational, star-making performance by X-Man Hugh Jackman as Curly.

“NASHVILLE 2.0” – NOVEMBER 22

Experience a variety of musical genres through the vibrancy of Nashville’s Americana music scene. From Emmylou Harris to Mumford and Sons, Rosanne Cash to The Mavericks, NASHVILLE 2.0 celebrates the American musical melting pot.

SECRETS OF ALTHORP: THE SPENCERS SUNDAY, NOVEMBER 10, 8PM

Althorp, childhood home and final resting place of Princess Diana, is currently the home of Diana’s brother, Charles, the 9th Earl Spencer. Nineteen generations of Spencers have presided over this grand estate for more than 500 years. The Spencer dynasty has produced politicians, military heroes, dukes and duchesses and will one day furnish Britain with a king: Diana’s son, Prince William.

JFK: AMERICAN EXPERIENCE MONDAY-TUESDAY, NOVEMBER 11-12, 9PM

PART ONE

Follow JFK’s rise to power from his birth to his election as president in 1960 — the youngest man ever to be elected to the office. With illuminating interviews from family members including sister Jean Kennedy Smith, niece Kathleen Kennedy Townsend, historian Robert Dallek and author Robert Caro, this episode offers new insight into Kennedy’s early years.

PART TWO

Follow Kennedy into the White House through his assassination and the unfulfilled promise of his presidency. This episode features frank appraisals by administration officials, including John Siegenthaler, Thomas Hughes and Harris Wofford, civil rights leaders Andrew Young and Julian Bond, and journalists Evan Thomas and Richard Reeves.

SECRETS OF THE DEAD WEDNESDAY, NOVEMBER 13, 10PM, FRIDAY, NOVEMBER 22, 10PM

“JFK”

This program tells the story of two men: one, the president of the United States — shot in Dallas — the other, respected CBS anchor Walter Cronkite, knowing he had to get the story right amid the uncertainties of that tragic day. Narrated by George Clooney, the special recounts the riveting story of the reporting from Dallas and the New York CBS Newsroom from the moment President Kennedy was shot until Cronkite’s emotional pronouncement of his death at 1:00 p.m. CST.

NOVA WEDNESDAYS, 9PM

“COLD CASE JFK” – NOVEMBER 13

Fifty years later, what can science tell us about the Kennedy assassination? The 1963 murder, in broad daylight in front of hundreds of witnesses, was a homicide investigator’s best-case scenario. Yet somehow the JFK assassination became a forensic nightmare, plagued by mishandled evidence, a controversial autopsy and, incredibly, a prime suspect murdered while in police custody. Now, NOVA follows a group of experts trying to unravel the lingering mysteries of the assassination.

Underwritten by 1st Source Bank and Zimmer



VISIT WNIT.ORG/PROGRAMS FOR MORE!



NOVA: Asteroid: Doomsday or Payday?



Carol Burnett: The Mark Twain Prize

“ASTEROID: DOOMSDAY OR PAYDAY?” – NOVEMBER 20

The asteroid that exploded in the skies over Siberia injuring more than 1,000 and damaging buildings in six cities was a shocking reminder that Earth is a target in a cosmic shooting range. In a collision with Earth, they could set off deadly blast waves, raging fires and colossal tidal waves. But some audacious entrepreneurs look at asteroids and see asteroids loaded with billions of dollars’ worth of elements like iron, nickel and even platinum.

SECRETS OF SCOTLAND YARD SUNDAY, NOVEMBER 17, 8PM

From Dickens to Sherlock Holmes, Agatha Christie to James Bond — no police institution in the world has caught the public imagination in the same way as Scotland Yard. The name actually comes from the location of the original police headquarters building. Its officers and “Bobbies” are often seen as protectors of the Royal Family and British officials, but Scotland Yard is most often associated with police detectives.

LINCOLN@GETTYSBURG TUESDAY, NOVEMBER 19, 9PM

In 1863, Abraham Lincoln proved himself a master of a new frontier — not on the battlefields of the Civil War, but in his high-tech command center: the War Department Telegraph Office. It connected him to the country in new ways and faster than before. The results led to the rebirth of America on the fields of Gettysburg ... both in the battle that turned the tide of the Civil War and in the few words that recast the American ideal as a national creed: the Gettysburg Address.

FRONTLINE: WHO WAS LEE HARVEY OSWALD? TUESDAY, NOVEMBER 19, 10PM

At the heart of the Kennedy assassination lies the puzzle of Lee Harvey Oswald: Was he the emotionally disturbed lone gunman of the 1964 Warren Commission report? Was he, as the House Select Committee on Assassinations concluded, probably part of a conspiracy on that day in Dallas? Or was he an unwitting fall guy, the patsy, as Oswald himself claimed when he was arrested on November 22, 1963?

COMET ENCOUNTERS WEDNESDAY, NOVEMBER 20, 10PM

This year a particularly massive comet—a chunk of ice and rock—is hurtling our way. As it races past us, the Comet ISON should develop a tail that will light up the skies brighter than a full moon. Then the comet will slingshot around the back of the sun and could emerge brighter than ever, treating the entire northern hemisphere to an unforgettable sight.

CAROL BURNETT: THE MARK TWAIN PRIZE SUNDAY, NOVEMBER 24, 8PM, WEDNESDAY, NOVEMBER 27, 9PM

Carol Burnett—comedic icon and all-around performing legend—is the guest of honor when, for the 16th year, the comedy world convenes in Washington, D.C., to toast the year’s recipient of the Kennedy Center’s Mark Twain Prize for American Humor. The program features an all-star cast and an assortment of comedic highlights from Burnett’s half century in show business.

WORTH WATCHING DECEMBER



Barbra Streisand – Back to Brooklyn



The Best of the 60s (My Music Archives)

All programs are on both 34.1 and 34.2 unless noted.

DECEMBER MEMBERSHIP PROGRAMMING

Special programming featured on these pages runs from November 29 to December 8.

GREAT PERFORMANCES: BARBRA STREISAND – BACK TO BROOKLYN

**FRIDAY, NOVEMBER 29, 8PM,
SUNDAY, DECEMBER 1, 5PM**

The legendary Barbra Streisand makes a historic homecoming to Brooklyn at the new Barclays Center arena, marking the superstar's first Brooklyn concert since her childhood years. Joined by special guests Il Volo and Chris Botti, Streisand performs an extensive selection of songs from throughout her five-decade career, including a touching duet with her son, Jason Gould.

HEAL YOURSELF: MIND OVER MEDICINE WITH LISSA RANKIN, MD SATURDAY, NOVEMBER 30, 11AM, SATURDAY, DECEMBER 7, 9AM

Dr. Lissa Rankin is a trained ob-gyn who has emerged as one of the newest thought leaders in the mind/body medicine arena. In *Heal Yourself*, Dr. Rankin presents meticulously researched explanation of the critical role our thoughts, feelings, and beliefs play in our health and wellbeing – and how we can harness the power of our minds to enjoy great health and longevity with specific, easy-to-do steps.

GREAT MOMENTS & MEMORIES: THE LAWRENCE WELK HOLIDAY SPECIAL SATURDAY, NOVEMBER 30, 6PM

Join Myron Floren, Norma Zimmer, Jo Ann Castle, Bobby Burgess, Ken Delo, Sandi Griffiths, Gail Farrell and Ron Anderson as they reunite to host this special featuring great moments and memories spanning 30 years of Welk Christmas holiday shows. This “wunnerful, wunnerful” program features the finest Christmas music, including many traditional carols and popular songs of the season, as well as classical choices such as “The Hallelujah Chorus” and selections from “The Nutcracker Suite.”

THE BEST OF THE 60s (MY MUSIC ARCHIVES) SATURDAY, NOVEMBER 30, 8:30PM, TUESDAY, DECEMBER 3, 8PM

My Music Archives brings together a special collector's edition of the best of the 60s featuring original hit songs featured in *My Generation: The 60s*, *The British Beat*, *Motown*, *60s Pop*, *Rock & Soul*, and *The 60s Generation*. Also featured is the final complete set recorded by Davy Jones for PBS, never broadcast in its entirety since his passing.

CLASSICAL REWIND (MY MUSIC) SUNDAY, DECEMBER 1, 3:30PM, SATURDAY, DECEMBER 7, 1PM

Experience the beauty, romance and dramatic power of musical masterpieces in this visual and auditory joyride through the world of classical hits. Host Martin Goldsmith guides viewers on this fresh and engaging exploration of the world of classical music, with personal reflections from Itzhak Perlman, Joshua Bell and Stewart Copeland of The Police, among others.



VISIT WNIT.ORG/PROGRAMS FOR MORE!



Return to Downton Abbey



Celtic Woman: Home for Christmas

RETURN TO DOWNTON ABBEY
SUNDAY, DECEMBER 1, 8PM,
SUNDAY, DECEMBER 8, 6:30PM

Enjoy clips, interview bites and behind-the-scenes footage as award-winning actress Susan Sarandon recalls the great joys and wrenching sadness that has taken place at Downton Abbey. She'll also explore the changing world of Downton Abbey, the women of Downton Abbey, and love and other relationships at Downton Abbey as viewers await Season 4 of the most talked-about drama in Masterpiece history.

STRAIGHT NO CHASER:
SONGS OF THE DECADES
HOLIDAY EDITION
MONDAY, DECEMBER 2, 8PM

This will be the last chance to get tickets to Indiana a cappella sensation Straight No Chaser as they return to the Morris Performing Arts Center on Thursday, December 19, 2013 with their latest show, Under the Influence. *WNIT still has tickets remaining in a special block of "best in the house" seats that are available ONLY to WNIT supporters. For more info or to get tickets now, call 574-675-9648 or log on to wnit.org.*

JOHN SEBASTIAN
PRESENTS FOLK REWIND
WEDNESDAY, DECEMBER 4, 8PM,
SATURDAY, DECEMBER 7, 11PM

Relive the music of the greatest singers and songwriters of the classic 1950s and 1960s folk era. John Sebastian hosts a treasure trove of historical footage that has not been seen in more than four decades, plus new performances by artists who are still appearing in concert today. The program features Pete Seeger and Judy Collins singing "Turn, Turn, Turn," Harry Belafonte's hit "Jamaica Farewell," Trini Lopez's rendition of "If I Had a Hammer," Rod McKuen's classic "Seasons in the Sun," and many, many more.

THE TEXAS TENORS:
YOU SHOULD DREAM
WEDNESDAY, DECEMBER 4, 8PM

The Texas Tenors present an exciting special featuring great music from the worlds of country, folk, opera and Broadway music. The Texas Tenors new album, You Should Dream – devoted to the classical treatment of beloved country, Broadway, and standard favorites, forms the basis for this show. *WNIT has your opportunity to get tickets to see The Texas Tenors appearing at the Shippshewana Event Center on August 23, 2014. For more info or to get tickets now, call 574-675-9648 or log on to wnit.org.*

CELTIC WOMAN:
HOME FOR CHRISTMAS
THURSDAY, DECEMBER 5, 9:30PM,
SUNDAY, DECEMBER 8, 5PM

Celebrate the holidays with timeless favorites performed with a Celtic twist in this new chapter of musical enchantment from the enormously popular all-female ensemble. A visual and aural feast, this moving and festive celebration was filmed at Dublin's Helix Theatre.

GREAT PERFORMANCES:
PAVAROTTI: A VOICE FOR
THE AGES
FRIDAY, DECEMBER 6, 8PM,
SUNDAY, DECEMBER 8, 3:30PM

Celebrate the 50th anniversary of Pavarotti's debut with hits and beloved arias from La Boheme, Rigoletto and Aida, arrangements by Henry Mancini including "Mamma" and "O Sole Mio", favorite sacred songs like "Ave Maria" and "O Holy Night", as well as popular duets with Bono, Sting and Eric Clapton in this phenomenal collection of performances showcasing Pavarotti's powerful sound, natural grace and brilliant color.

WORTH WATCHING DECEMBER




Israel: Facing the Future



How Sherlock Changed the World

All programs are on both 34.1 and 34.2 unless noted.

CHRISTMAS WITH THE MORMON TABERNACLE CHOIR FEATURING ALFIE BOE AND TOM BROKAW

TUESDAY, DECEMBER 10, 8PM ,
TUESDAY, DECEMBER 24, 9PM

As seen and heard by more than 80,000 people in the LDS Conference Center in Salt Lake City, this program features renowned TV personality Tom Brokaw and Tony Award-winning Les Misérables tenor Alfie Boe in a concert of holiday favorites. Boe's moving signature performance of "Bring Him Home" is a highlight.

ISRAEL: FACING THE FUTURE TUESDAY, DECEMBER 10, 9PM

Join BBC journalist John Ware as he journeys to Israel for a fresh look at the country's response to the changes sweeping the region in the wake of the Arab Spring. Meeting Israelis from all walks of life, Ware ventures beyond the news clichés and analyzes what's next for the Jewish state, as both the religious and the secular battle over its future.

SILENT NIGHT FRIDAY, DECEMBER 13, 9PM

This opera recounts the true story of the World War I Christmas Eve truce. For one magical evening on December 24, 1914, French, German and Scottish soldiers laid down their arms and joined in a spontaneous celebration reflecting the peace, fellowship and humanity of the season. Silent Night is sung in French, English, German, Italian and Latin with English subtitles.

ANTIQUES ROADSHOW MONDAYS, 8PM AND THURSDAYS, 10PM

**"JUNK IN THE TRUNK" –
DECEMBER 16, 8PM,
DECEMBER 19, 10PM**

Highlights include one of a set of six inherited chairs, made 50 years ago by a furniture designer who also did commissions for Aristotle Onassis; a rare and extensive collection of WWII prison camp materials that posthumously established a glider pilot's eligibility for a medal; and a drawing and lithograph by iconic American artist Grant Wood.

Antiques Roadshow: Underwritten by 1st Source Bank, Alick's Home Medical, Center for Hospice Care, Gibson, The Gibson Foundation, Gosben Antique Mall and Northern Box Company

RED METAL: THE COPPER COUNTRY STRIKE OF 1913

TUESDAY, DECEMBER 17, 8PM 

An epic labor strike that devastated Michigan's Copper Country in 1913 haunts the American labor movement to this day. Among the notable elements of that strike was the death of 73 children at a union Christmas party, a tragedy immortalized by Woody Guthrie in his ballad "1913 Massacre," performed in the film by Steve Earle. The event remains the deadliest unsolved manslaughter in U.S. history.

HOW SHERLOCK CHANGED THE WORLD TUESDAY, DECEMBER 17, 9PM

The fictional Sherlock Holmes was a scientist who used chemistry, bloodstains and minute traces of evidence to catch criminals. In an era when eyewitness reports and "smoking gun" evidence were needed to convict criminals, Sherlock Holmes' crime-scene methods were revolutionary. With a mix of interviews, dramatic reconstruction and archives, the program tells the story of the impact and legacy of the most famous crime fighter in history.



VISIT WNIT.ORG/PROGRAMS FOR MORE!



Christmas in Norway with the St. Olaf Choir



Call the Midwife Holiday Special

**CRAFT IN AMERICA: HOLIDAY
FRIDAY, DECEMBER 20, 9PM**

“Holiday” celebrates some of our most important traditions. Nordic folk woodcarver Harley Refsal brings to life the rich history of winter solstice. Clay artist Susan Garson creates fanciful Chanukah menorahs. George Vanderbilt’s opulent turn-of-the-century Christmas is recreated at the Biltmore in Asheville, North Carolina. Navidad is celebrated in San Antonio with religious processions and Veronica Castillo creates a traditional Mexican Tree of Life.

**CHRISTMAS IN NORWAY
WITH THE ST. OLAF CHOIR
MONDAY, DECEMBER 23, 9PM**

From Trondheim’s historic Nidaros Cathedral, CHRISTMAS IN NORWAY WITH THE ST. OLAF CHOIR features the 75-voice St. Olaf Choir from St. Olaf College and the Norwegian girl choir, Nidaros Jentekor. The production pairs the cathedral’s gothic beauty and stunning acoustics with the distinctive a cappella singing style for which the St. Olaf Choir is internationally known.

**COMET ENCOUNTER
WEDNESDAY, DECEMBER 25, 10PM**


In this program, scientists around the world follow a once-in-a-lifetime event, the path of the sun-grazing comet ISON. The comet, somewhere between one and 10 kilometers in diameter, is currently just beyond the orbit of Jupiter. As it races past Earth toward the sun, it will likely develop a tail to light up the night skies. Then ISON will slingshot around the back of the sun, to emerge perhaps brighter than ever.

**AMERICAN MASTERS:
MARVIN HAMLISCH:
WHAT HE DID FOR LOVE
FRIDAY, DECEMBER 27, 9PM**

By age 31, Marvin Hamlisch (1944-2012) had won four Grammys, an Emmy, three Oscars, a Tony and a Pulitzer Prize. With hit after hit — “The Way We Were,” “Nobody Does It Better” and scores for The Sting, Sophie’s Choice and the Broadway juggernaut A Chorus Line, this documentary tells a deeply personal, insider story of one of the great artists of our time.

**CALL THE MIDWIFE
HOLIDAY SPECIAL
SUNDAY, DECEMBER 29, 7:30PM**

CALL THE MIDWIFE follows nurse Jenny Lee and the midwives and nuns from Nonnatus House convent who visit the expectant mothers of Poplar, providing the poorest women with the best possible care. Chummy, PC Noakes and baby Freddy are back in the East End, Sister Bernadette, now known as Shelagh since leaving the convent, is preparing for her wedding to Dr. Turner and Jenny is facing huge challenges personally and professionally.

**LIVE FROM LINCOLN CENTER;
NEW YORK PHILHARMONIC
GALA WITH YO-YO MA
TUESDAY, DECEMBER 31, 8PM** 

LIVE FROM LINCOLN CENTER rings in the new year with a special broadcast of the New York Philharmonic’s opening gala concert featuring music director Alan Gilbert and special guest cello soloist Yo-Yo Ma. Audra McDonald hosts the broadcast, which features interstitial interviews with Yo-Yo Ma and composer Osvaldo Golijov.



NOVEMBER

	8:00 pm	8:30 pm	9:00 pm	9:30 pm	10:00 pm	10:30 pm	11:00 pm	11:30 pm
1 Fri	Washington Week	Economic Outlook	Great Performances: Moby Dick From The San Francisco Opera					Nightly Business Report
2 Sat	Antiques Roadshow: Miami Beach, FL		Keeping Up Appearances	Keeping Up Appearances	As Time Goes By	As Time Goes By	Globe Trekker: The Alps	
3 Sun	Secrets Of Selfridges		Masterpiece Classic: The Paradise		Masterpiece Classic: Downton Abbey II		American Experience: War Of The Worlds	
4 Mon	Antiques Roadshow: Junk In The Trunk		Antiques Roadshow: Dallas, TX		Independent Lens: The Graduates Pt. 2		Charlie Rose	
5 Tue	African Americans: Into The Fire (1861-1890)		American Masters: Jimi Hendrix					Charlie Rose
6 Wed	Nature: Love In The Animal Kingdom		NOVA: Making Stuff		Raw To Ready: Bombardier		Charlie Rose	
7 Thu	Ask An Expert		Antiques Roadshow: San Francisco, CA		Antiques Roadshow: Junk In The Trunk		Charlie Rose	
8 Fri	Washington Week	Economic Outlook	Great Performances: Stephen Sondheim's Company With The NY Philharmonic					Nightly Business Report
9 Sat	Antiques Roadshow: Junk In The Trunk		Keeping Up Appearances	Keeping Up Appearances	As Time Goes By	As Time Goes By	Globe Trekker: Silk Road X'ian To Kashgar	
10 Sun	Secrets Of Althorp: The Spencers		Masterpiece Classic: The Paradise		Masterpiece Classic: Downton Abbey II		David Suchet On The Orient Express	
11 Mon	Antiques Roadshow: Politically Collect		American Experience: JFK Pt. 1					Charlie Rose
12 Tue	African Americans: Making A Way		American Experience: JFK Pt. 2					Charlie Rose
13 Wed	Nature: Parrot Confidential		NOVA: Cold Case JFK		Secrets Of The Dead: JFK		Charlie Rose	
14 Thu	Ask An Expert		Secrets Of The Dead: JFK		Antiques Roadshow: Politically Collect		Charlie Rose	
15 Fri	Washington Week	Economic Outlook	Great Performances: Rodgers & Hammerstein's Oklahoma!					
16 Sat	Antiques Roadshow: Politically Collect		Keeping Up Appearances	Keeping Up Appearances	As Time Goes By	As Time Goes By	Globe Trekker: Silk Road Kashgar To Istanbul	
17 Sun	Secrets Of Scotland Yard		Masterpiece Classic: The Paradise		Masterpiece Classic: Downton Abbey II			
18 Mon	Antiques Roadshow: Survivors		Antiques Roadshow: San Diego, CA		Nazi Megaweapons: Atlantic Wall		Charlie Rose	
19 Tue	African Americans: It's Nation Time! (1968-2013)		Lincoln@Gettysburg		Frontline: Who Was Lee Harvey Oswald?		Charlie Rose	
20 Wed	NOVA: At The Edge Of Space		NOVA: Asteroid – Doomsday Or Payday?		Comet Of The Century		Charlie Rose	
21 Thu	Ask An Expert		Antiques Roadshow: San Diego, CA		Antiques Roadshow: Survivors		Charlie Rose	
22 Fri	Washington Week	Economic Outlook	Nashville 2.0		Secrets Of The Dead: JFK		Charlie Rose	
23 Sat	Antiques Roadshow: Survivors		Keeping Up Appearances	Keeping Up Appearances	As Time Goes By	As Time Goes By	Globe Trekker: Istanbul To Vienna	
24 Sun	Carol Burnett: The Mark Twain Prize				Masterpiece Classic: Downton Abbey II			
25 Mon	Antiques Roadshow: San Diego, CA		Antiques Roadshow: San Diego, CA		Nazi Megaweapons: U-Boat Base		Nazi Megaweapons: V2 Rocket	
26 Tue	African Americans: It's Nation Time! (1963-2013)		The March		Frontline: A Death In St. Augustine		Charlie Rose	
27 Wed	Nature: My Life As A Turkey		Carol Burnett: The Mark Twain Prize					Charlie Rose
28 Thu	Ask An Expert		Antiques Roadshow: San Diego, CA		Antiques Roadshow: San Diego, CA		Charlie Rose	
29 Fri	Great Performances: Barbra Streisand Back To Brooklyn						Charlie Rose	
30 Sat	Lawrence Welk Holiday Special	The Best of the 60s			Elton John In Concert			

PRIMETIME – (34.2)

NOVEMBER



	8:00 pm	8:30 pm	9:00 pm	9:30 pm	10:00 pm	10:30 pm	11:00 pm	11:30 pm
1 Fri	Exp. Michiana	Harbor Lights	Great Performances: Moby Dick From The San Francisco Opera					Sky Island
2 Sat	Great Performances: Moby Dick From The San Francisco Opera					Ribbon Of Sand	Austin City Limits: Emmy Lou Harris	
3 Sun	Secrets Of Selfridges		Masterpiece Classic: The Paradise	Masterpiece Classic: Downton Abbey II		Austin City Limits: Emmy Lou Harris		
4 Mon	Exp. Michiana	Dinner & A Book	Antiques Roadshow: Dallas, TX	Independent Lens: The Graduates Pt. 2		Charlie Rose		
5 Tue	Exp. Michiana	My Generation	American Masters: Jimi Hendrix				Charlie Rose	
6 Wed	Exp. Michiana	Outdoor Elements	NOVA: Making Stuff	Raw To Ready: Bombardier		Charlie Rose		
7 Thu	Exp. Michiana	Just Seen It	Call The Midwife	Antiques Roadshow: Junk In The Trunk		Charlie Rose		
8 Fri	Exp. Michiana	Harbor Lights	Great Performances: Stephen Sondheim's Company With The NY Philharmonic					Ribbon Of Sand
9 Sat	Great Performances: Stephen Sondheim's Company With The NY Philharmonic					Sky Island	Austin City Limits: Emeli Sande	
10 Sun	Secrets Of Althorp: The Spencers		Masterpiece Classic: The Paradise	Masterpiece Classic: Downton Abbey II		Austin City Limits: Emeli Sande		
11 Mon	Exp. Michiana	Dinner & A Book	American Experience: JFK Pt. 1				Charlie Rose	
12 Tue	Exp. Michiana	My Generation	American Experience: JFK Pt. 2				Charlie Rose	
13 Wed	Exp. Michiana	Outdoor Elements	NOVA: Cold Case JFK	Secrets Of The Dead: JFK		Charlie Rose		
14 Thu	Exp. Michiana	Just Seen It	American Experience: JFK Pt. 1				Charlie Rose	
15 Fri	Exp. Michiana	Harbor Lights	Great Performances: Rodgers & Hammerstein's Oklahoma!					
16 Sat	Antiques Roadshow: Politically Collect		Great Performances: Rodgers & Hammerstein's Oklahoma!			Austin City Limits: Fun		
17 Sun	Secrets Of Scotland Yard		Masterpiece Classic: The Paradise	Masterpiece Classic: Downton Abbey II				
18 Mon	Exp. Michiana	Dinner & A Book	Antiques Roadshow: San Diego, CA	Independent Lens: Indian Relay		Charlie Rose		
19 Tue	Exp. Michiana	My Generation	Lincoln@Gettysburg	Antiques Roadshow: Survivors		Charlie Rose		
20 Wed	Exp. Michiana	Outdoor Elements	NOVA: Asteroid – Doomsday Or Payday?	Comet Of The Century		Charlie Rose		
21 Thu	Exp. Michiana	Just Seen It	American Experience: JFK Pt. 2				Charlie Rose	
22 Fri	Exp. Michiana	Harbor Lights	Nashville 2.0	Secrets Of The Dead: JFK		Charlie Rose		
23 Sat	Nashville 2.0		Secrets Of The Dead: JFK	Lincoln@Gettysburg		ACL Presents		
24 Sun	Carol Burnett: The Mark Twain Prize				Masterpiece Classic: Downton Abbey II			
25 Mon	Exp. Michiana	Dinner & A Book	Antiques Roadshow: San Diego, CA	Independent Lens: Young Lakota		Charlie Rose		
26 Tue	Exp. Michiana	My Generation	How Sherlock Changed The World				Charlie Rose	
27 Wed	Exp. Michiana	Outdoor Elements	Nature: An Original Duckum	Nature: The Private Life		Charlie Rose		
28 Thu	Exp. Michiana	Just Seen It	POV: Listening	Morristown	Antiques Roadshow: San Diego, CA		Charlie Rose	
29 Fri	Great Performances: Barbra Streisand Back To Brooklyn						Charlie Rose	
30 Sat	Lawrence Welk Holiday Special	The Best of the 60s			Elton John In Concert			

PRIMETIME – (34.1)

DECEMBER



	8:00 pm	8:30 pm	9:00 pm	9:30 pm	10:00 pm	10:30 pm	11:00 pm	11:30 pm
1 Sun	Return To Downton Abbey			John Sebastian Presents: Folk Rewind				The Dash Diet
2 Mon	Straight No Chaser: Songs Of The Decades: Holiday			Elton John In Concert			Heal Yourself: Mind Over Medicine	
3 Tue	The Best Of The 60s				3 Steps To Incredible Health With Dr. Joel Fuhrman, M.D.			
4 Wed	The Texas Tenors: You Should Dream				John Sebastian Presents: Folk Rewind			Brain Change
5 Thu	Rick Steves' European Christmas			Celtic Woman: Home For Christmas			3 Steps To Incredible Health	
6 Fri	Pavarotti: A Voice For The Ages			Il Volo Buon Natale			The Best Of The 60s	
7 Sat	Straight No Chaser: Songs Of The Decades: Holiday		Girl Grooves				John Sebastian Presents	
8 Sun	Inside Foyle's War			Carole King & James Taylor Live At The Troubadour			3 Steps To Incredible Healing	
9 Mon	Antiques Roadshow: Des Moines, IA		Monsenor: The Last Journey Of Oscar Romero			Architect Robert A.M. Stern	Charlie Rose	
10 Tue	Christmas With The Mormon Tabernacle Choir		Israel: Facing The Future		Frontline: Raising Adam Lanza		Charlie Rose	
11 Wed	Nature: Magic Of The Snowy Owl		NOVA: Ultimate Mars Challenge		Extreme By Design		Charlie Rose	
12 Thu	Ask An Expert		Antiques Roadshow: Des Moines, IA		Antiques Roadshow: Des Moines, IA		Charlie Rose	
13 Fri	Washington Week	Economic Outlook	Silent Night				Charlie Rose	
14 Sat	Antiques Roadshow: Des Moines, IA		Keeping Up Appearances	Keeping Up Appearances	As Time Goes By	As Time Goes By	Globe Trekker: Paris City Guide 2	
15 Sun	Downton Abbey Season 3		Downton Abbey Season 3		Downton Abbey Season 3		Purdue Christmas Show	
16 Mon	Antiques Roadshow: Junk In The Trunk		The National Christmas Tree Lighting		Celtic Thunder Christmas		Charlie Rose	
17 Tue	Red Metal: Copper Country Strike		How Sherlock Changed The World				Charlie Rose	
18 Wed	Nature: Wolves And Buffalo		NOVA: Extreme Ice		Life On Fire: Icelandic Volcanoes		Charlie Rose	
19 Thu	Ask An Expert		Antiques Roadshow: Trash To Treasure		Antiques Roadshow: Junk In The Trunk		Charlie Rose	
20 Fri	Washington Week	Economic Outlook	Holiday Craft In America		Christmas At Belmont		Charlie Rose	
21 Sat	Antiques Roadshow: Junk In The Trunk		Keeping Up Appearances	Keeping Up Appearances	As Time Goes By	As Time Goes By	Globe Trekker: Ice Trekking The Alps	
22 Sun	Mr. Stink		Downton Abbey Season 3				Penn High School Choir: Songs Of The Season	
23 Mon	Antiques Roadshow: Finders Keepers		Christmas In Norway With The St. Olaf Choir		Penn High School Choir: Songs Of The Season		Charlie Rose	
24 Tue	Christmas At Belmont		Mormon Tabernacle Choir Christmas		From Jesus To Christ: The First Christians			
25 Wed	Nature: Christmas In Yellowstone		NOVA: Building The Great Cathedrals		Comet Encounter		Charlie Rose	
26 Thu	Ask An Expert		Antiques Roadshow: Relative Riches		Antiques Roadshow: Finders Keepers		Charlie Rose	
27 Fri	Washington Week	Economic Outlook	Marvin Hamlisch: What He Did For Love			Return To Downton Abbey	Charlie Rose	
28 Sat	Antiques Roadshow: Finders Keepers		Keeping Up Appearances	Keeping Up Appearances	As Time Goes By	As Time Goes By	Globe Trekker: Southern China	
29 Sun	Call The Midwife Holiday Special		Downton Abbey Season 3				Return To Downton Abbey	Great Getaways
30 Mon	Antiques Roadshow: Phoenix, AZ		Antiques Roadshow: Phoenix, AZ		Eat, Fast, And Live Longer		Charlie Rose	
31 Tue	New York Philharmonic With Yo-Yo Ma			Return To Downton Abbey	From Jesus To Christ: The First Christians			

PRIMETIME – (34.2)

DECEMBER



	8:00 pm	8:30 pm	9:00 pm	9:30 pm	10:00 pm	10:30 pm	11:00 pm	11:30 pm
1 Sun	Return To Downton Abbey		John Sebastian Presents: Folk Rewind			The Dash Diet		
2 Mon	Straight No Chaser: Songs Of The Decades: Holiday		Elton John In Concert			Heal Yourself: Mind Over Medicine		
3 Tue	The Best Of The 60s			3 Steps To Incredible Health With Dr. Joel Fuhrman, M.D.				
4 Wed	The Texas Tenors: You Should Dream			John Sebastian Presents: Folk Rewind			Brain Change	
5 Thu	Rick Steves' European Christmas		Celtic Woman: Home For Christmas			3 Steps To Incredible Health		
6 Fri	Pavarotti: A Voice For The Ages		Il Volo Buon Natale			The Best Of The 60s		
7 Sat	Straight No Chaser: Songs Of The Decades: Holiday		Girl Grooves			John Sebastian Presents		
8 Sun	Inside Foyle's War		Carole King & James Taylor Live At The Troubadour			3 Steps To Incredible Healing		
9 Mon	Exp. Michiana	Dinner & A Book	Antiques Roadshow: Des Moines, IA	Independent Lens: Beauty Is Embarrassing			Ribbon Of Sand	
10 Tue	Exp. Michiana	My Generation	Israel: Facing The Future	Frontline: Raising Adam Lanza		Charlie Rose		
11 Wed	Exp. Michiana	Outdoor Elements	NOVA: Ultimate Mars Challenge	Extreme By Design		Charlie Rose		
12 Thu	Exp. Michiana	Just Seen It	Mormon Tabernacle Choir Christmas	Antiques Roadshow: Des Moines, IA		Charlie Rose		
13 Fri	Exp. Michiana	Charlie Rose	Silent Night			Charlie Rose		
14 Sat	Silent Night			Extreme By Design		Austin City Limits: Edward Sharpe		
15 Sun	Downton Abbey Season 3		Downton Abbey Season 3		Downton Abbey Season 3		Austin City Limits: Edward Sharpe	
16 Mon	Exp. Michiana	Dinner & A Book	Antiques Roadshow: Trash To Treasure	Independent Lens: Playwright		Charlie Rose		
17 Tue	Exp. Michiana	My Generation	How Sherlock Changed The World			Charlie Rose		
18 Wed	Exp. Michiana	Outdoor Elements	NOVA: Extreme Ice	Life On Fire: Icelandic Volcanoes		Charlie Rose		
19 Thu	Exp. Michiana	Just Seen It	Christmas At Luther	Antiques Roadshow: Junk In The Trunk		Charlie Rose		
20 Fri	Exp. Michiana	Charlie Rose	Holiday Craft In America	Christmas At Belmont		Charlie Rose		
21 Sat	Holiday Craft In America		Christmas At Belmont		Christmas At Luther		Austin City Limits: Tom Waits	
22 Sun	Mr. Stink		Downton Abbey Season 3			Austin City Limits: Tom Waits		
23 Mon	Exp. Michiana	Dinner & A Book	Christmas In Norway With The St. Olaf Choir	Independent Lens: Jiro Dreams			Downton Abbey	
24 Tue	Exp. Michiana	My Generation	Mormon Tabernacle Choir Christmas	From Jesus To Christ: The First Christians				
25 Wed	Exp. Michiana	Outdoor Elements	NOVA: Building The Great Cathedrals	Comet Encounter		Charlie Rose		
26 Thu	Exp. Michiana	Just Seen It	Lidia Celebrates America	Antiques Roadshow: Finders Keepers		Charlie Rose		
27 Fri	Exp. Michiana	Charlie Rose	Marvin Hamlisch: What He Did For Love		Return To Downton Abbey		Charlie Rose	
28 Sat	Marvin Hamlisch: What He Did For Love		Return To Downton Abbey		Lidia Celebrates America		Austin City Limits: Rodrigo Y Gabriela	
29 Sun	Call The Midwife Holiday Special		Downton Abbey Season 3			Austin City Limits: Rodrigo Y Gabriela		
30 Mon	Exp. Michiana	Dinner & A Book	Antiques Roadshow: Phoenix, AZ	Independent Lens			Downton Abbey	
31 Tue	Exp. Michiana	My Generation	On Story: James Franco	Return To Downton Abbey		From Jesus To Christ: The First Christians		

WEEKDAYS—NOVEMBER/DECEMBER

34.1

6:00 am	Body Electric
6:30 am	Martha Speaks
7:00 am	Arthur
7:30 am	Wild Kratts
8:00 am	Curious George
8:30 am	The Cat in the Hat
9:00 am	Peg + Cat
9:30 am	Dinosaur Train
10:00 am	Sesame Street
11:00 am	Daniel Tiger's Neighborhood
11:30 am	Super WHY!
Noon	Sid The Science Kid
12:30 pm	Thomas & Friends
1:00 pm	Dinosaur Train
1:30 pm	Caillou
2:00 pm	Peg + Cat
2:30 pm	Martha Speaks
3:00 pm	Word Girl
3:30 pm	Cat In The Hat
4:00 pm	Curious George
4:30 pm	Arthur
5:00 pm	Wild Kratts
5:30 pm	BBC World News America
6:00 pm	PBS Newshour
7:00 pm	Experience Michiana
7:30 pm	Harbor Lights



34.2

6:00 am	Sit and Be Fit				
6:30 am	Classical Stretch				
7:00 am	Arthur				
7:30 am	Wild Kratts				
8:00 am	Curious George				
8:30 am	The Cat in the Hat Knows A Lot about That!				
9:00 am	Peg + Cat				
9:30 am	Dinosaur Train				
10:00 am	Sesame Street				
11:00 am	Daniel Tiger's Neighborhood				
11:30 am	Super Why!				
Noon	Rick Steves' Europe				
12:30 pm	Mon-Joseph Rosendo	Tues-Built To Last	Wed-Natural Heroes	Thu-VP	Fri-Just Seen It
1:00 pm	Mon-Globe Trekker	Tues-This Old House Hour	Wed-History Detective	Thu-Julie Tabouli	Fri-Well Read
1:30 pm				Thu-Jazzy Vegetarian	
2:00 pm	Mon-Aviators	Tues-American Woodshop	Wed-Best of Painting	Thu-Mexico One Plate	Fri-Austin City Limits
2:30 pm	Mon-Journeys in Africa	Tues-Woodsmith Shop	Wed-Jerry Yarnell	Thu-Chef John Besa	
3:00 pm	Mon-Politically Speaking	Tues-Rough Cut	Wed-Painting & Travel	Thu-Cook's Country	Fri-Ask an Expert
3:30 pm		Tues-American Woodshop	Wed-Paint This	Thu-America's Test Kitchen	
4:00 pm	Mon-Inside IN Business	Tues-Economic Outlook	Wed-Weekly Special	Thu-Naturally Indiana	Fri-IN Week in Review
4:30 pm		Tues-IN Week in Review	Wed-Hoosier Craftsman		Fri-IN Expeditions
5:00 pm	Mon-IN Week in Review/IN Exp	Tues-IN Courts	Wed-Hoosier Hospitality	Thu-IN Week in Review/Built	Fri-Hoosier Hospitality
6:00 pm	Mon-Hoosier Craftsman	Tue-The Weekly Special	Wed-IN Expeditions	Thu-The Weekly Special	Fri-Harbor Lights
6:30 pm	Nightly Business Report				
7:00 pm	PBS NewsHour				



WEEKENDS – NOVEMBER/DECEMBER



	SATURDAYS	SUNDAYS		SATURDAYS	SUNDAYS
6:00 am	Michigan Out-of-Doors	Curious George	6:00 am	Barney & Friends	Sesame Street
6:30 am	The Best of Joy of Painting	The Cat in the Hat	6:30 am	Angelina Ballerina	
7:00 am	Quilting Arts	Peg + Cat	7:00 am	Curious George	Curious George
7:30 am	Fons & Porter	Dinosaur Train	7:30 am	The Cat in the Hat	The Cat in the Hat
8:00 am	Sewing With Nancy	Cyberchase	8:00 am	Peg + Cat	Peg + Cat
8:30 am	Sew It All	Biz Kids	8:30 am	Dinosaur Train	Dinosaur Train
9:00 am	Martha's Sewing Room	Outdoor Elements	9:00 am	Daniel Tiger's Neighborhood	Daniel Tiger's Neighborhood
9:30 am	Knitting Daily	Rick Steves' Europe	9:30 am	Super WHY!	Super WHY!
10:00 am	Lidia's Kitchen	INside Indiana Business	10:00 am	Thomas & Friends	Sid The Science Kid
10:30 am	Dinner & A Book		10:30 am	Bob the Builder	Wild Kratts
11:00 am	Cook's Country	Off the Record	11:00 am	This Old House Hour	Arthur
11:30 am	America's Test Kitchen	Indiana Week in Review	11:30 am		Martha Speaks
Noon	Martha Stewart's Cooking	Washington Week	Noon	Baking with Julia	Cyberchase
12:30 pm	Martha Bakes	Economic Outlook	12:30 pm	Victory Garden	Electric Company
1:00 pm	Victory Garden	McLaughlin Group	1:00 pm	This Old House	Washington Week
1:30 pm	P. Allen Smith's Garden Home	To The Contrary	1:30 pm	This Old House	Charlie Rose
2:00 pm	This Old House	Politically Speaking	2:00 pm	Ask This Old House	Religion & Ethics Newsweek
2:30 pm	Hometime		2:30 pm	Hometime	To The Contrary
3:00 pm	Built to Last	Queen & Country	3:00 pm	Woodwright's Shop	Moyers and Company
3:30 pm	Woodwright's Shop		3:30 pm	Motorweek	
4:00 pm	Market Warriors	VP	4:00 pm	Martha Stewart's Cooking School	VP
4:30 pm	Harbor Lights		4:30 pm	Harbor Lights	
5:00 pm	PBS NewsHour Weekend	PBS NewsHour Weekend	5:00 pm	History Detectives	NOVA
5:30 pm	Experience Michiana	Charlie Rose: The Week	6:00 pm	PBS NewsHour Weekend	PBS NewsHour Weekend
6:00 pm	Classic Gospel	VP	6:30 pm	Charlie Rose: The Week	Washington Week
7:00 pm	Lawrence Welk	Antiques Roadshow	7:00 pm	Antiques Roadshow	Nature

DECEMBER WEEKEND PLEDGE PROGRAMMING

Saturday, November 30

- 7:00am Brain Change with David Perlmutter M.D.
- 8:30am Deepak Chopra M.D.: What Are You Hungry For?
- 10:00am Train Your Dog Like a Pro
- 11:00am Heal Yourself: Mind Over Medicine with Dr. Lissa Rankin
- 12:30pm 3 Steps to Incredible Health with Joel Fuhrman, M.D.
- 2:30pm Rick Steves' European Christmas
- 4:30pm Harbor Lights
- 5:00pm Cooking with Experience Michiana
- 6:00pm Great Moments and Memories: The Lawrence Welk Holiday Special

Sunday, December 1

- 1:30pm 3 Steps to Incredible Health with Joel Fuhrman, M.D.
- 3:30pm Classical Rewind (My Music Archives)
- 5:00pm Great Performances: Barbra Streisand, Back to Brooklyn

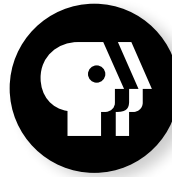
Saturday, December 7

- 7:00am 3 Steps to Incredible Health with Joel Fuhrman, M.D.
- 9:00am Heal Yourself: Mind Over Medicine with Dr. Lissa Rankin
- 10:30am Cooking with Experience Michiana
- 11:30am Brain Change with David Perlmutter M.D.
- 1:00pm Classical Rewind (My Music Archives)
- 2:30pm 3 Steps to Incredible Health with Joel Fuhrman, M.D.
- 4:30pm Harbor Lights
- 5:00pm Gospel Jubilee's Showcase
- 6:00pm Daniel O'Donnell from the Heartland
- 7:30pm Straight No Chaser: Songs of the Decades, Holiday Edition

Sunday, December 8

- 1:30pm Rick Steves' Delicious Europe
- 2:00pm Libera: Angels Sing Christmas in Ireland
- 3:30pm Great Performances: Pavarotti - A Voice for the Ages
- 5:00pm Celtic Woman: Home for Christmas
- 6:30pm Return to Downton Abbey

OVERNIGHT PROGRAMS NOVEMBER



FRIDAY 1

Midnight Tavis Smiley/NBR
1:00 am This Old House Hour
2:00 am Call The Midwife
3:00 am Nature: Wolverine
4:00 am NOVA: Making Stuff
5:00 am Raw To Ready

SATURDAY 2

Midnight Tavis Smiley/NBR
1:00 am Washington Week
1:30 am Charlie Rose
2:00 am Moby Dick
4:30 am Sky Island
5:00 am This Old House Hour

SUNDAY 3

Midnight Downton Abbey Rev.
1:30 am R. Steves' Hidden Eur.
3:30 am He Touched Me
5:00 am Beyond The Stars

MONDAY 4

Midnight Secrets Of Selfridge
1:00 am The Paradise
2:00 am Downton Abbey
3:00 am Moby Dick
5:30 am Ribbon Of Sand

TUESDAY 5

Midnight Tavis Smiley/NBR
1:00 am Ant. Roadshow Dallas
2:00 am Ant. Roadshow Junk
3:00 am Secrets Of Selfridge
4:00 am The Paradise
5:00 am Downton Abbey

WEDNESDAY 6

Midnight Tavis Smiley/NBR
1:00 am African Americans
2:00 am Jimi Hendrix
4:00 am The Graduates
5:00 am Ant. Roadshow Dallas

THURSDAY 7

Midnight Beyond The Stars/NBR
1:00 am He Touched Me
2:30 am R. Steves' Hidden Eur.
4:30 am Jerry Apps Farm Story

FRIDAY 8

Midnight Tavis Smiley/NBR
1:00 am This Old House Hour
2:00 am Call The Midwife
3:00 am African Americans
4:00 am Nature: Love
5:00 am NOVA: Making Stuff

SATURDAY 9

Midnight Tavis Smiley/NBR
1:00 am Washington Week
1:30 am Charlie Rose
2:00 am Stephen Sondheim
4:30 am Ribbon Of Sand
5:00 am This Old House Hour

SUNDAY 10

Midnight Nature: Love
1:00 am NOVA: Making Stuff
2:00 am Jimi Hendrix
4:00 am The Graduates
5:00 am Washington Week
5:30 am Charlie Rose

MONDAY 11

Midnight Secrets Of Althorp
1:00 am The Paradise
2:00 am Downton Abbey
3:00 am Stephen Sondheim
5:30 am Sky Island

TUESDAY 12

Midnight Jerry Apps Farm/NBR
1:30 am Downton Abbey
3:00 am Beyond The Stars
4:00 am R. Steves' Hidden Eur.

WEDNESDAY 13

Midnight Tavis Smiley/NBR
1:00 am African Americans
2:00 am JFK Pt. 2
4:00 am Secrets Of Althorp
5:00 am Ant. Roadshow

THURSDAY 14

Midnight Tavis Smiley/NBR
1:00 am Nature
2:00 am NOVA: JFK
3:00 am Secr/Dead: JFK
4:00 am African Americans
5:00 am Ant. Roadshow

FRIDAY 15

Midnight Tavis Smiley/NBR
1:00 am This Old House Hour
2:00 am JFK Pt. 2
4:00 am Secr/Dead: JFK
5:00 am Nature

SATURDAY 16

Midnight Beyond The Stars/NBR
1:00 am Jerry Apps Farm Story
2:00 am R. Steves' Hidden Eur.
4:00 am He Touched Me

SUNDAY 17

Midnight Nature
1:00 am JFK Pt. 1
3:00 am JFK Pt. 2
5:00 am Washington Week
5:30 am Charlie Rose

MONDAY 18

Midnight Austin City Limits
1:00 am Scotland Yard
2:00 am The Paradise
3:00 am Downton Abbey
5:00 am Cold Case JFK

TUESDAY 19

Midnight Tavis Smiley/NBR
1:00 am Ant. Roadshow
2:00 am Scotland Yard
3:00 am The Paradise
4:00 am Downton Abbey

WEDNESDAY 20

Midnight Downton Abbey/NBR
1:30 am R. Steves' Hidden Eur.
3:30 am He Touched Me
5:00 am Beyond The Stars

THURSDAY 21

Midnight Tavis Smiley/NBR
1:00 am At The Edge Of Space
2:00 am Asteroid: Doomsday
3:00 am Comet Of The Century
4:00 am African Americans
5:00 am Lincoln@Gettysburg

FRIDAY 22

Midnight Tavis Smiley/NBR
1:00 am This Old House Hour
2:00 am African Americans
3:00 am Lincoln@Gettysburg
4:00 am Asteroid: Doomsday
5:00 am Comet Of The Century

SATURDAY 23

Midnight Tavis Smiley/NBR
1:00 am Washington Week
1:30 am Charlie Rose
2:00 am Nashville 2.0
3:00 am Secr/Dead: JFK
4:00 am JFK: Pt. 2

SUNDAY 24

Midnight He Touched Me
1:30 am Beyond The Stars
2:30 am Jerry Apps Farm Story
4:00 am R. Steves' Hidden Eur.

MONDAY 25

Midnight ACL Presents
1:00 am Carol Burnett
3:00 am Downton Abbey
5:00 am Comet Of The Century

TUESDAY 26

Midnight Tavis Smiley/NBR
1:00 am Ant. Roadshow
2:00 am Carol Burnett
4:00 am Downton Abbey

WEDNESDAY 27

Midnight Tavis Smiley/NBR
1:00 am African Americans
2:00 am March
3:00 am A Death St. Augustine
4:00 am Young Lakota
5:00 am Ant. Roadshow

THURSDAY 28

Midnight Tavis Smiley/NBR
1:00 am My Life As A Turkey
2:00 am An Original Duckum
3:00 am Nature
4:00 am African Americans
5:00 am Ant. Roadshow

FRIDAY 29

Midnight Tavis Smiley/NBR
1:00 am This Old House Hour
2:00 am POV: Listening
2:30 am Morristown
3:00 am March
4:00 am NOVA
5:00 am Ant. Roadshow

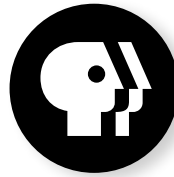
SATURDAY 30

Midnight Tavis Smiley/NBR
1:00 am Washington Week
1:30 am Charlie Rose
2:00 am Sherlock Holmes
4:00 am Ant. Roadshow
5:00 am This Old House Hour

NBR = Nightly Business Report



OVERNIGHT PROGRAMS DECEMBER



Special pledge programming shown in purple.

SUNDAY 1

1:30 am Best Of The 60s
3:30 am Brain Change
5:00 am Easy Yoga For Arthritis

MONDAY 2

Midnight The Dash Diet
1:00 am 3 Steps To Incrad Health
3:00 am Super Brain
4:30 am Mind Over Medicine

TUESDAY 3

Midnight Heal Yourself
12:30 am Protect Your Memory
2:00 am Heart Of Perfect Health
4:00 am Mind Over Medicine

WEDNESDAY 4

Midnight Easy Yoga For Arthritis
1:00 am John Sebastian Presents
3:00 am Straight No Chaser
4:30 am The Dash Diet

THURSDAY 5

Midnight Brain Change
1:00 am Super Brain
2:30 am 3 Steps To Incrad Health
4:30 am Protect Your Memory

FRIDAY 6

Midnight 3 Steps To Incrad Health
1:00 am Best Of The 60s
3:00 am Elton John In Concert
4:30 am Mind Over Medicine

SATURDAY 7

Midnight Best Of The 60s
1:00 am Heart Of Perfect Health
3:00 am 3 Steps Incrad Health
5:00 am Cooking W/ Experience

SUNDAY 8

Midnight John Sebastian Presents
1:00 am 60s Girl Grooves
3:00 am Ret. To Downton Abbey
4:30 am Classical Rewind

MONDAY 9

Midnight 3 Steps Incrad Health
1:00 am Brain Change
2:30 am Mind Over Medicine
4:00 am 3 Steps Incrad Health

TUESDAY 10

Midnight Tavis Smiley/NBR
1:00 am Ant. Roadshow
2:00 am Ant. Roadshow
3:00 am Downton Abbey III
5:00 am Downton Abbey III

WEDNESDAY 11

Midnight Tavis Smiley/NBR
1:00 am Mormon Tab Choir
2:00 am Israel Facing Future
3:00 am Raising Adam Lanza
4:00 am Beauty Is Embarrassing
5:30 am Ribbon Of Sand

THURSDAY 12

Midnight Tavis Smiley/NBR
1:00 am Magic Snowy Owl
2:00 am Ult Mars Challenge
3:00 am Extreme By Design
4:00 am Israel Facing Future
5:00 am Mormon Tab Choir

FRIDAY 13

Midnight Tavis Smiley/NBR
1:00 am This Old House Hour
2:00 am Mormon Tab Choir
3:00 am Extreme By Design
4:00 am Magic Snowy Owl
5:00 am Ult Mars Challenge

SATURDAY 14

Midnight Tavis Smiley/NBR
1:30 am Washington Week
1:30 am Charlie Rose
2:00 am Silent Night
4:00 am Israel Facing Future
5:00 am This Old House Hour

SUNDAY 15

Midnight Magic Snowy Owl
1:00 am Ult Mars Challenge
2:00 am Raising Adam Lanza
3:00 am Beauty Is Embarrassing
4:30 am Ribbon Of Sand
5:00 am Washington Week
5:30 am Charlie Rose

MONDAY 16

Midnight Downton Abbey III
1:00 am Downton Abbey III
2:00 am Downton Abbey III
3:00 am Silent Night
5:00 am Extreme By Design

TUESDAY 17

Midnight Tavis Smiley/NBR
1:00 am Trash To Treasure
2:00 am Junk In The Trunk
3:00 am Downton Abbey III
4:00 am Downton Abbey III
5:00 am Downton Abbey III

WEDNESDAY 18

Midnight Tavis Smiley/NBR
1:00 am Red Metal
2:00 am Sherlock Ch. World
4:00 am Independent Lens
5:00 am Junk In The Trunk

THURSDAY 19

Midnight Tavis Smiley/NBR
1:00 am Nature: Cold Warriors
2:00 am NOVA: Extreme Ice
3:00 am Icelandic Volcanoes
4:00 am Sherlock Ch. World

FRIDAY 20

Midnight Tavis Smiley/NBR
1:00 am This Old House Hour
2:00 am Christmas At Luther
3:00 am Red Metal
4:00 am Nature: Cold Warriors
5:00 am NOVA: Extreme Ice

SATURDAY 21

Midnight Tavis Smiley/NBR
1:00 am Washington Week
1:30 am Charlie Rose
2:00 am Holiday Craft America
3:00 am Christmas At Belmont
4:00 am Icelandic Volcanoes
5:00 am This Old House Hour

SUNDAY 22

Midnight Nature: Cold Warriors
1:00 am NOVA: Extreme Ice
2:00 am Sherlock Ch. World
4:00 am Independent Lens
5:00 am Washington Week
5:30 am Charlie Rose

MONDAY 23

Midnight Mr. Stink
1:00 am Downton Abbey III
3:00 am Holiday Craft America
4:00 am Christmas At Belmont
5:00 am Christmas At Luther

TUESDAY 24

Midnight Tavis Smiley/NBR
1:00 am Christmas In Norway
2:00 am Finders Keepers
3:00 am Mr. Stink
4:00 am Downton Abbey III

WEDNESDAY 25

Midnight Tavis Smiley/NBR
1:00 am Christmas At Belmont
2:00 am Mormon Tab Choir
3:00 am From Jesus To Christ
5:00 am Christmas In Norway

THURSDAY 26

Midnight Tavis Smiley/NBR
1:00 am Xmas In Yellowstone
2:00 am Bldg Great Cathedrals
3:00 am Comet Of The Century
4:00 am Independent Lens
5:30 am Return To D. Abbey

FRIDAY 27

Midnight Tavis Smiley/NBR
1:00 am This Old House Hour
2:00 am Lidia Cel. America
3:00 am Christmas In Norway
4:00 am Xmas In Yellowstone
5:00 am Christmas In Norway

SATURDAY 28

Midnight Tavis Smiley/NBR
1:00 am Washington Week
1:30 am Charlie Rose
2:00 am Marvin Hamlisch
3:30 am Ret Downton Abbey
4:00 am Christmas At Belmont
5:00 am This Old House Hour

SUNDAY 29

Midnight Xmas In Yellowstone
1:00 am Bldg Great Cathedrals
2:00 am Independent Lens
3:30 am Ret Downton Abbey
5:00 am Washington Week
5:30 am Charlie Rose

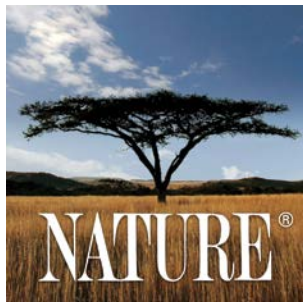
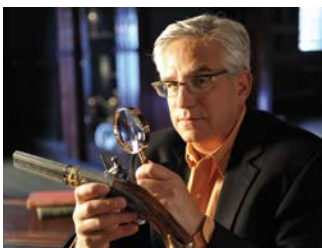
MONDAY 30

Midnight Midwife Holiday Special
1:30 am Downton Abbey III
4:00 am Marvin Hamlisch

TUESDAY 31

Midnight Tavis Smiley/NBR
1:00 am Ant. Roadshow Phoenix
2:00 am Midwife Holiday Special
3:00 am Downton Abbey III
5:30 am Ret. Downton Abbey

NBR = Nightly Business Report



PRODUCTION NEWS

Harbor Lights Series 3 Premieres in November

Harbor Lights TV is returning to WNIT in November with its third series.

A 30-minute show focusing on interesting projects, people, places and events in the communities throughout Southwest Michigan, Harbor Lights debuted in September 2012. Series 3 of Harbor Lights TV will feature eight episodes, including a fresh look at some of your favorite segments with never before seen footage, interesting new stories and more.

Harbor Lights Series 3 premieres on WNIT Friday, November 1, at 7:30pm with a repeat on Saturday, November 2, at 4:30pm and runs for eight consecutive weeks at these same times. Harbor Lights TV is a magazine format show created, co-produced and hosted by Benton Harbor native Dawn Yarbrough and aired in partnership with WNIT. Harbor Lights will also air on 34.2 at 8:30pm Fridays (6:00pm during pledge November 29 and December 6) and 4:30pm Saturdays from November 1 through December 21.



Downton Abbey Returns to WNIT

WNIT will air Seasons 2 and 3 of Downton Abbey leading up to the premiere of the new season on Sunday, January 5, 2014. Season 2, episodes 4 -7, will air on consecutive Sundays, November 3 through November 24 at 10pm. Season 3 will air on three consecutive Sundays, December 15 through 29:

Episodes 1, December 15, 3pm

Episodes 2, 3, 4 and 5 on December 15 from 7 -11 pm

Episode 6 on December 22, 9pm

Episode 7 on December 29, 9pm

If you miss a program, catch up episodes will be available for 7 days afterwards by going to video.wnit.org/program/masterpiece/.

The new season 4 will air on eight consecutive Sundays, January 5 through February 23 at 9pm. Each episode is then repeated the following Sunday before the next episode.



Deborah donated her '97 Toyota Tercel.

Turn your car into programs you love on WNIT

Is it time to bid farewell to your beloved car? Let it do a final good deed, by turning it into your favorite programs on WNIT.

Donate your vehicle, and we'll use the proceeds to support your favorite programs like "Sesame Street", "Antiques Roadshow", and "Downton Abbey" as well as local programs like "Ask An Expert" and "Experience Michiana".

It takes just a few minutes. You get free towing, a tax deduction, and the great feeling that comes from doing something to support WNIT!

What could be better?



Aladdin's eatery

317 W. University Drive
Mishawaka, IN 46545
(574) 272-2227
Fax (574) 272-2260



Come dine in with us
or place an order for carryout!

We also offer delivery
through Dine-In Delivery Service



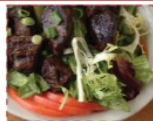
25% OFF

\$20.00 or more
Does not include
alcohol, tax, or gratuity
Expires 09/21/13



FREE APPETIZER

(Excludes Vegetarian Combo)
Expires 09/21/13



FREE SMOOTHIE OR FRESH SQUEEZED JUICE

with any entree purchase
Expires 09/21/13
Not valid with other offers

FOREVER LEARNING

I N S T I T U T E

OFFERING OVER 90 CLASSES TO IMPROVE
OLDER ADULT LIFE (50+) THROUGH
INTELLECTUAL CHALLENGE, SPIRITUAL
REFLECTION AND SOCIAL INTERACTION.



FALL FESTIVAL IS
NOVEMBER 19TH



SEMESTERS BEGIN IN
MARCH AND
SEPTEMBER



FOR MORE INFORMATION:

www.foreverlearninginstitute.org,
director@foreverlearninginstitute.org,
(574)282-1901

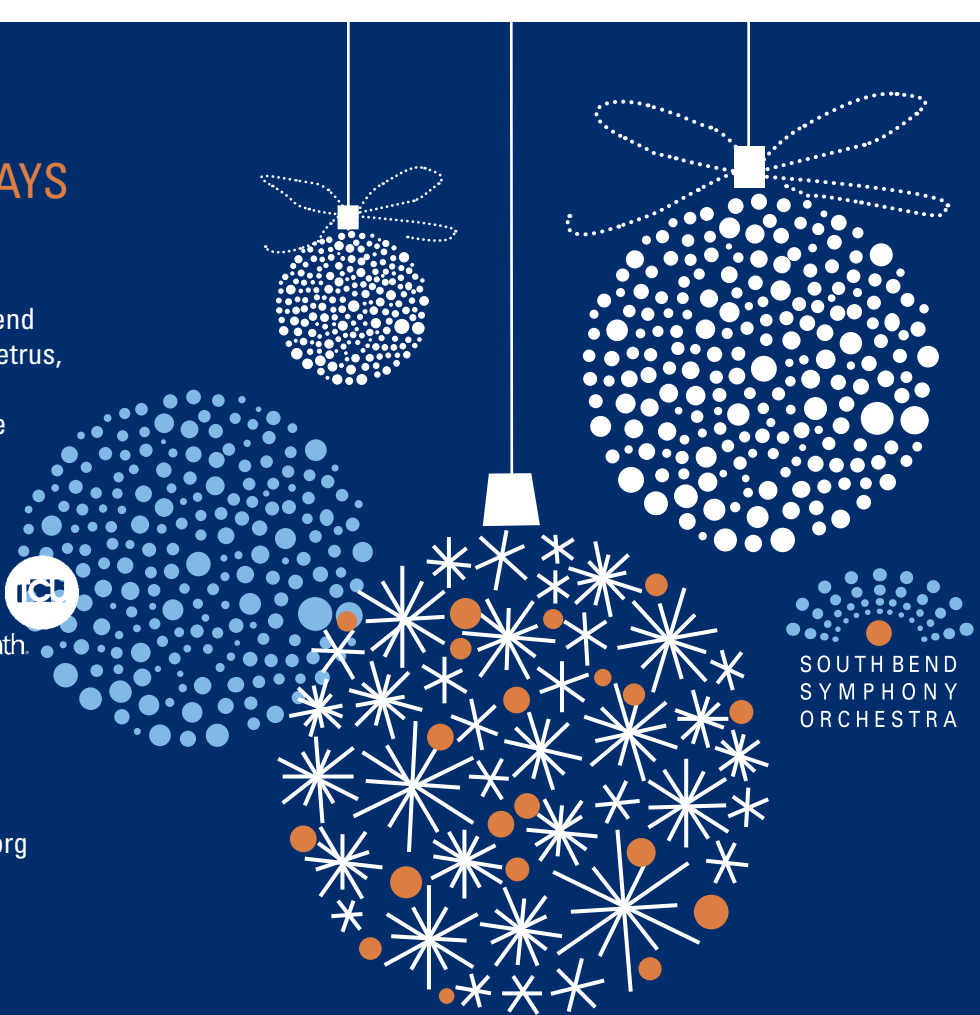
HOME FOR THE HOLIDAYS A WHITE CHRISTMAS

Join Maestro Tsung Yeh, the South Bend Symphony and guest artist, Juliette Petrus, soprano along with the Home for the Holidays Festival Chorus for a yuletide tradition, holiday songs, cherished favorites and a sing-along of carols.

Co-sponsored: Teachers Credit Union  and Crowe Horwath  Crowe Horwath.

Guest artist Underwritten:
Stanz Food Service 

574.235.9190 or southbendsymphony.org



MEMBERSHIP CORNER

MEMBERSHIP HIGHLIGHTS

End of Year Tax Planning & Donations

As the year comes to a close, please consider making an additional investment in the future of WNIT – an investment in a remarkable brand of television that is here for everyone to enjoy. As a community-owned station, WNIT is a reflection of your interests, your curiosity, and your support. Visit wnit.org/donate to make your tax-deductible cash contribution before December 31st. You can also make gifts of vehicles or appreciated stock.

Qualified individuals can also make a charitable gift from an IRA through December 31st. This provision allows taxpayers who are age 70 ½ or older to give up to \$100,000 from their IRA to qualifying charities without having to pay income tax on the withdrawn amount. Individuals interested in this type of contribution should consult their tax or financial advisors for more information.

At this special time of year, all of us at WNIT wish you and your family a festive holiday season and a joyous new year. We look forward to serving you in 2014 and remain dedicated to bringing you the best that public television has to offer.

Giving Made Easy – Become a WNIT Sustainer

Consider a monthly ongoing gift. It's an easy and convenient way to show your support of WNIT. Instead of giving one lump sum every year, you contribute \$5, \$10 or \$20 a month – or whatever amount you choose. It's up to you to give the amount that is comfortable for you. Plus, we stop when you tell us to – it's that simple! No matter how you give, remember that your financial contribution goes directly to keeping the quality programming you love on the air. We can only do it with your generous support. Start making your monthly gift today and your membership will renew automatically! Call the Membership Team at 574-675-9648 x311 to get started.

2013 Winter Membership Campaign

The Winter Membership Campaign begins Friday, November 29 and runs through Sunday, December 8. We do understand and realize the disappointment when your favorite programs are interrupted for a membership campaign. While we make every effort to keep interruption of regular programming to a minimum, it is an undeniable fact that a majority of new members, and a substantial portion of our annual revenue, are derived from membership campaigns. WNIT remains committed to bringing you the best programming that television has to offer – whether it's regular or pledge programming.

So bundle up and get ready to warm your spirit with an entertaining and inspiring line up for the entire family. And be sure to tell your family and friends why you think supporting WNIT is important. It's viewers like you who make that transition and become a contributor who make a difference to everyone in our community.

THANK YOU for making that transition and supporting WNIT!

WNIT BOX OFFICE Last Chance for Best In House Seats for Straight No Chaser!

Straight No Chaser returns to the Morris Performing Arts Center on Thursday, December 19 with their latest show, *Under the Influence*. WNIT still has tickets remaining in a special block of “best in the house” seats that are available ONLY to WNIT supporters. Tune in to WNIT on Monday, December 2 at 8pm for *Straight No Chaser: Songs of the Decades* to get tickets. For more info or to get tickets now, call 574-675-9648 or log on to wnit.org.

WNIT Welcomes The Texas Tenors!

The Texas Tenors return to Michiana on Saturday, August 23, 2014, and WNIT has your opportunity to get prime seating tickets for their concert at the Shipshewana Event Center in Shipshewana, Indiana. Come and experience the talents of Marcus, JC and John as they smoothly blend country, classical, gospel and Broadway with a dedicated touch of humor and charm. Watch *The Texas Tenors: You Should Dream* on Wednesday, December 4 at 8pm for information on available ticket packages. For more info or to get tickets now, call 574-675-9648 or log on to wnit.org.

Enroll Your Kids or Grandkids in WNIT Kids Club

Each child or grandchild enrolled will receive:

- A WNIT Kids Club backpack with a variety of PBS® children's activity sheets as well as an age-appropriate book from Better World Books
- A welcome folder for parents with information, references and ideas to help children learn and grow
- A one-year subscription to the Planner, WNIT's bimonthly program guide
- WNIT's monthly e-Newsletter
- Email notification of free or discounted ticket offers for area adult and children's performances
- A coupon for a complimentary 8" personal pizza from Papa John's

For their birthday, each child or grandchild will receive:

- A special on-air birthday greeting during their birthday month
- A birthday postcard
- An age-appropriate book from Better World Books
- A coupon for a free 8" single layer cake from Dainty Maid Bake Shop

WNIT Kids Club members and their families also get free entrance to the annual WNIT Kids Day in the Park held during the summer at an area park facility. Families can enjoy fun-filled games and activities and children can have their photo taken with a PBS children's personality such as Clifford, The Cat in the Hat, Buddy from Dinosaur Train or others.

Adults supporting WNIT at \$50 per year can enroll kids or grandkids in WNIT Kids Club. Those joining at \$75 and above will also receive the WNIT MemberCard offering 2-for-1 discounts at area restaurants, museums, attractions, online stores and shopping. All renewing WNIT Kids Club members receive a book from Better World Books and a coupon for a personal pizza from Papa John's.

To enroll call the Membership Team at 574-675-9648, x311 or go to wnit.org.



HAPPY BIRTHDAY TO WNIT KIDS CLUB MEMBERS!

NAME	AGE	NAME	AGE
Anthony Althoff	4	Clara Moran Walton	6
Madeline Cashore	2	Isobel Morris	2
Chrissy Hamman	6	Carleah Morrison	5
Sarah Harvey	7	Elena Ohlsson	6
Miriam Horban	11	Carina Olson	10
Joshua Jankowski	8	Jackson Roher	5
Benjamin Kio	6	Tommy Slott	8
Noah Kovach	3	Veronica Thomas	10
Claire Leniski	6	Kristin Tingwald	9
Gibson Leep	3	Padraig Wagner	4
Micaiah Miner	7		

"I'm helping

to give someone that I'll never meet the opportunity to be as successful as I've been."

Ed Mapp believes that PBS opens new worlds for everyone. That's why he's included PBS in his will. If you are planning to include charitable interests in your plan, please consider making WNIT part of your lasting legacy.



Find out how you can plan a gift

Contact Joanne Schloss at 574.675.9648 ext. 311 or jschloss@wnit.org



Join or Renew Today!

Already Support WNIT? Refer a Friend!

Please mail this form with your gift to: **WNIT Public Television**, P.O. Box 7034, South Bend, Indiana 46634

Or join online at WNIT.org

Questions? Call us at 574.675.9648

Yes, I would like to support WNIT!

Name _____

Address _____

City/State/Zip _____

Phone _____

E-mail _____

Please select annual membership level:

- \$35 WNIT Senior Member
- \$50 WNIT Member
- \$75 WNIT MemberCard
- Other \$ _____

Payment Method:

Please charge my:

- VISA MasterCard
- Discover American Express

Card # _____

Expires _____

Signature _____

My Check is enclosed, payable to WNIT Public Television

I want to be a **WNIT Sustainer Member:**

As a WNIT Sustainer, your ongoing monthly gift will continue until you tell us to stop. Credit and debit charges will be made on the 15th of each month. Your membership will automatically renew annually and benefits will continue without interruption.

HONOR ROLL MEMBERS



WNIT would like to recognize the following Honor Roll Members for their continued support!

25 YEARS

Joan Armstrong
Patricia and Maurice Bricker
Anna Marie Bush
James and Suzanne Cierzniak
Dagny M. Diamond
Richard A. Dobbins
Ralph Fitch
Susan and Jim Jones
Gretchen and C. Dean Kimble
Mrs. Gloria Kingman
Kay Koch
William and Cynthia Macwhorter
Mr. Vaughn McKim
Sandra Middleton
Conchita and Michael Miller
Kathleen and Patrick Murphy
Mr. and Mrs. Philip Penn
Richard Pilger
Sandra and Orvill Schmidt
Mary Seymour
Maria and Tom Slager
Barbara and Donald Sniegowski
Eve Sobol
Ms. Jane Utterback
Dale Whitehead
Harold Wiseman
Arleta and Samuel Yoder
Charles Yoder

20 YEARS

Wendell Bearss
Christie Davenport
Mary and Marshall Fader
Jane and Gene Flora
Robert and Irma Fox
Jane Friend
Mary Ellen Handwork
Burton and Catherine Johnston
Carl and Arlene Lazzaro
Paul and Jessica Maich
Arlene Mark
Carla and Terry Matzat
Susan and Robert Shields

15 YEARS

Delores and Thomas Beath
Richard and Betty Bellaire
Thomas and Marcia Blum
Doris and Jerry Carpenter
Rev. Leonard Chrobot
Sharon Eberhard
David Fairchild
Paul and Christie Helquist
Keith and Janice Kenyon
Patricia Lunte
Ruth Mark
Barth Pollak
Michelle and Bryan Richards
Sue Ann Riley
Helene Snider
James Townsend
Rose M. Waldschmidt
Gretchen Winger
Harriet Wise

10 YEARS

Betty Beals
Cynthia Benedict
Susan Cook
Sheila Cook
David and Bobbi Dosmann
Dr. Mary Frandsen
Judith Kelly
Patricia and Glenn Killoren
Dr. Walter Kolmodin DPM
Bill and Lois Nichols
Julie Parent
Joy Pletcher
Paul Randall
Shirley See
Judy Streeter
Dave Switzer

5 YEARS

Terry Berg
James Burrows
Mr. and Mrs. Wendell Clouse
Scott and Julie Dunham
Carol and Patrick Dunn
Sherman Hansen
Bonnie Hartline
Sharon and Thomas Kendle
Betty Kincaid
Judy Kinney
Judith Kuhl
Don and Glenda Lamont
Helga Maier
Tim and Patricia McBride
Mary E. Nelson
Ronald Neumann
Annetta Place
Karen Powell
Pamela L. Snuff
Walter and Jane Ward

WNIT SUPPORTERS

- 1st Source Bank**
Antiques Roadshow
BBC World News
Inside Indiana Business
Masterpiece: Downton Abbey
McLaughlin Group
NOVA
PBS NewsHour
- 32 Pearls Family Dentistry**
Children's Programming
Miscellaneous Prime Time
- Alick's Home Medical**
Antiques Roadshow
Lawrence Welk
- Aladdin's Eatery**
Miscellaneous Programming
- Azteca Auto Sales**
Latino Americans
- Barnes & Thornburg**
Business Programming
- Caretel Inns of Lakeland**
Miscellaneous Prime Time
- Carmela's at Macri's**
Miscellaneous Programming
- C.E. LEE Decorating Center**
Hometime
- Center for History**
Masterpiece: Downton Abbey
- Center for Hospice Care**
Antiques Roadshow
Masterpiece: Downton Abbey
- Cochran Family Dentistry**
Children's Programming
- Cosimo & Susie's A Bit of Italy**
Lidia's Italy in America
- D & W, Inc.**
Children's Programming
- Elkhart Civic Theater**
Miscellaneous Prime Time
- Elkhart County Symphony**
Miscellaneous Programming
- Faegre Baker Daniels LLP**
PBS NewsHour
- Family Dental Health**
Miscellaneous Programming
- Friends School and Day Care**
Children's Programming
- The Gibson Foundation**
Antiques Roadshow
- Gibson, Strength Against Risk**
Antiques Roadshow
- Steven A. Goldberg, CPA**
Washington Week
- Goodwill Industries**
Children's Programming
Women's Programming
- Goshen Antique Mall**
Antiques Roadshow
- Goshen College**
Miscellaneous Prime Time
- Greencroft Communities**
Miscellaneous Programming
- GreenTown Michiana**
Miscellaneous Prime Time
- Growing Kids Learning Centers**
Children's Programming
- Gymnastics Michiana**
Children's Programming
- Hartzler Guterthuth Inman Funeral Home**
Masterpiece: Downton Abbey
- Hearth & Home**
Home Improvement Programming
- Heritage Square**
Children's Programming
- Homan Lumber Mart Inc.**
Hometime
- Hospice Foundation**
Miscellaneous Programming
- House of Andala**
Hometime
Miscellaneous Programming
This Old House
- Hovenkamp's Produce**
Children's Programming
Cooking Programming
- Indiana Community Bank**
Miscellaneous Programming
- Indiana Trust & Investment Company**
Masterpiece: Downton Abbey
- IU Health Goshen Heart & Vascular Center**
Miscellaneous Programming
- Jordan Automotive**
Miscellaneous Programming
- Judd Leighton School of Business and Economics**
Business Programming
- KC Tree, Inc.**
Miscellaneous Programming
- Brian King, DDS**
Miscellaneous Programming
- Lake City Bank**
Inside Indiana Business
- Lanser's, The Natural Way**
Daniel Tiger's Neighborhood
Sesame Street
- Lippert Components**
Children's Programming
- M. and S. Management Co., Inc.**
Masterpiece
- Martin's Super Markets**
Nature
- McDonald Physical Therapy & Sports Rehabilitation Center**
BBC World News
- Michiana Eye Center**
Miscellaneous Programming
- Mid-City Supply Company**
Hometime
- Dr. Dane & Mary Louise Miller Foundation**
History Detectives
Inside Indiana Business
News Brief
Nightly Business Report
- Mishawaka Furniture**
Women's Programming
- Musical Arts Indiana**
Miscellaneous Programming
- Northern Box Company**
Antiques Roadshow
- Nunemaker's Coin Shop**
Masterpiece
- Nyloncraft**
Masterpiece: Downton Abbey
- Pain Management Group**
Miscellaneous Prime Time
- Patchwork Dance Company**
Miscellaneous Programming
- Peacock & Company**
Miscellaneous Programming
- Pfeifer, Morgan & Stesiak Attorneys At Law**
Austin City Limits
Jack Horkheimer: Stargazer
- Barb & John Phair**
Miscellaneous Programming
- Pike Lumber**
Michigan Out-Of-Doors
- Dr. Kelly Puster**
Children's Programming
- River Bend Hose**
Motorweek
- Ruthmere Museum**
Miscellaneous Prime Time
- Saint Joseph Regional Medical Center**
PBS NewsHour
- Salvation Army / Kroc Center**
Children's Programming
Miscellaneous Prime Time
News Programming
- Sew Creative Threads**
Sew It All
Sewing with Nancy
- Snite Museum of Art**
Miscellaneous Prime Time
- South Bend Civic Theatre**
Miscellaneous Programming
- South Bend Farmer's Market**
Miscellaneous Programming
- South Bend Medical Foundation**
McLaughlin Group
PBS NewsHour
- South Bend Symphony Orchestra**
Miscellaneous Programming
- South Bend Tribune**
Miscellaneous Programming
- Southwest Michigan Symphony Orchestra**
Miscellaneous Programming
- Stitch 'N Time Fabrics**
Quilting Arts
- Teachers Credit Union**
Biz Kids
Nightly Business Report
- The Dental Center**
Children's Programming
- The Heritage Museum and Cultural Center**
Miscellaneous Programming
- The Lerner Theatre**
Miscellaneous Programming
- The Quilting Loft**
Sew It All
Fons & Porter Love of Quilting
Quilting Arts
Sewing with Nancy
- The Troyer Group**
Nightly Business Report
PBS NewsHour
- The Village at Winona**
History Detectives
Inside Indiana Business
News Brief
Nightly Business Report
- Treat's Squire Shop**
Miscellaneous Programming
- University of Notre Dame DeBartolo Performing Arts Center**
Miscellaneous Programming
- Wagon Wheel Theatre**
Miscellaneous Prime Time
- Waterford Crossing**
Miscellaneous Programming
- YMCA of Michiana**
Miscellaneous Prime Time
- Zimmer**
NOVA
- BUSINESS CLUBS**
Chairman's Club (\$3,000)
Kurt Simon
Teachers Credit Union
President's Club (\$1,500)
Logan Community Resources, Inc.
Corporate Club (\$800)
Lyons Industries, Inc.
South Bend Medical Foundation
Business Honor Roll (\$300)
Mossberg and Company, Inc.
Sylvester & Tessie Kaminski Foundation
The Troyer Group
- KID'S CLUB AND RAISING READERS**
John Anderson Foundation
Better World Books
Dainty Maid Bake Shop
Papa John's
PNC Bank
St. Joseph County Parks
Kurt Simon
Small Smiles of South Bend
Sylvester & Tessie Kaminski Foundation
University Park Mall
YMCA of Michiana
- LOCAL PRODUCTIONS**
Ask An Expert
Beacon Health System
IU Health Goshen Center for Cancer Care
South Bend Clinic
Dinner & A Book
The Rex and Alice A. Martin Foundation
Additional Dinner & a Book Supporters:
Dr. Dane & Mary Louise Miller Foundation
The Village at Winona
Economic Outlook
Ancilla College
Bingham & Loughlin, P.C.
Chamber of Commerce of St. Joseph County
Lake City Bank
The Greater Elkhart Chamber of Commerce
Tuesley, Hall, Konopa, LLP
Ernestine Raclin: Leading the Way
Alick's Home Medical
Billie & David Bankoff
Barnes & Thornburg
Bingham and Loughlin, PC
Jo Ann & Joseph Blazek
Tom & Liz Borger
Center for History
Communication Company of South Bend
Tom & Dot Corson
Das Dutchman Essenhaus
Ann & Fred Dean
- Arthur J. Decio
Robert & Mary Pat Deputy
The Faccenda Family
Faegre Baker Daniels LLP
IOI Interlogic Outsourcing, Inc.
Jean & Van Gates
Graham-Allen Partners
Larry & Janet Hiler
IUSB Arts Foundation Board
IUSB Ernestine M. Raclin School of the Arts
Carol and Craig Kapson
Brian & Ginger Lake
Leighton-Oare Foundation
Lexus of Mishawaka
McDonald's Restaurants
Connie & Steve McTigue
Memorial Hospital of South Bend
Panzica Building Corporation
Peacock & Company
Barb & John Phair
Donna Schrock
Barry and Cari Shein
South Bend Medical Foundation
Steel Warehouse Company, LLC
Stifel - The Elkhart Group
Janet & Larry Thompson
Trinity School at Greenlawn
Tuesley, Hall, Konopa, LLP
University of Notre Dame
- Experience Michiana**
Ancilla College
Elkhart County Parks
Faegre Baker Daniels LLP
Florence V. Carroll Charitable Trust
Forever Learning Institute
KC Tree, Inc.
Dr. Dane & Mary Louise Miller Foundation
Nyloncraft
Pokagon Band of Potawatomi
Ruthmere Museum
Saint Joseph Regional Medical Center
Kurt Simon
South Bend Medical Foundation
South Bend Tribune
The Lerner Theatre
The Village at Winona
Trinity School at Greenlawn
Tuesley, Hall, Konopa, LLP
Village at Winona
Wagon Wheel Theatre
- Harbor Lights**
1st Source Bank
Ace Hardware of Niles
John & Elizabeth Allegretti
Ken Anki & Ann Miller
Anonymous
Hilda & Stephen Banyon
Benton Charter Township
Berrien Community Foundation (Thieneman)
Boulevard Hotel
Larry & June Bowman
Celebration Cinema
Cornerstone Alliance
Ann Dahmer & Kevin Geiser
Bob & Cindy Ehrenberg
Curtis & Kimberly Eschler
Tim Flynn & Dixie Inocenzio
- Barbara Globensky
Harbor Shores of Lake Michigan
Honor Credit Union
Hopp Family Foundation
Horizon Bank
Ken & Janet Kleinhample
Lakeland Healthcare
Lakeland Regional Medical Center
Jeanette Leahey
Lexus of Mishawaka
Lions Club of Benton Harbor
New Territory Arts Association
Debra Panozzo
Barbara J. Peoples
Lois Peoples
St. Joseph Today
Schalon Foundation
Joan M. Smith/J. Muller Smith
Southwest Michigan Tourist Council
Starks Family Funeral Home
Thomas Starks
Tabor Hill Winery & Restaurant
The Charms, Inc.
The Sleeping Cat Press
United Federal Credit Union
Vail Rubber Works
David & Barbara Whitwam
- Michiana's Rising Star**
ArtsEverywhere Initiative of the Community Foundation of St. Joseph County
Crown Trophy
Katy & Tim Demarais
Graham Allen Partners
Harbor Shores of Lake Michigan
Lake City Bank
Lexus of Mishawaka
Nyloncraft
Pokagon Band of Potawatomi
Kurt Simon
South Bend Medical Foundation
Wonderland Cinema of Niles, Michigan
- Outdoor Elements**
South Bend-Elkhart Audubon Society
WoodsToBe Trees
- Politically Speaking**
League of Women Voters of Indiana
- South Bend Medical Foundation Documentary**
Alick's Home Medical
Dr. Leslie Bodnar
Hologen Software
Harper Cancer Research Institute
K & D Custom Coach, Inc.
McDonald Physical Therapy
Saint Joseph Regional Medical Center
- PROMOTIONAL SUPPORT**
Alpha Graphics
Duley Press
Express Press
Mossberg & Company, Inc.
Rink Printing

SUPPORTER SPOTLIGHT

WILLIAM & LESLIE GITLIN

WNIT is very pleased to shine the Supporter Spotlight on William and Leslie Gitlin, great supporters of public television. Bill has served on the WNIT Board of Directors since 2007 and was just re-elected to serve another three-year term. He was a member of the Marketing Task Force and the Michiana's Rising Star Task Force. Bill is a dentist in South Bend and he and his wife, Leslie, are passionate supporters of the arts in Michiana. Leslie also participated in the development of the WNIT production, "Among the Righteous." Their enthusiasm for the WNIT Directors' Circle and capital campaign is unique among viewers and members of the station. Thank you, Bill and Leslie!



William & Leslie Gitlin

DIRECTORS' CIRCLE



The WNIT Directors' Circle represents a very dedicated and select group of individuals who, by their commitment, contribute to the total annual support which is the foundation of WNIT's operating budget. These essential annual contributions make possible the great programs that everyone in Michiana enjoys.

Diamond Level (\$10,000 +)

Ed and Sue Hiler
Craig D. Sullivan and
Cynthia L. Harris

Platinum Level (\$5,000 +)

Arthur J. Decio
Irions Foundation, Inc.
Ernestine M. Raclin
Welter Foundation

Gold Level (\$2,500 +)

Anonymous (1)
Susan and David Findlay
Margaret and Albert Gutierrez
Susan Kay Hintz
James W. and Sally F. Hubbard
Sara and Abraham Marcus
Chris and Carmi Murphy
Perry and Ida Reynolds Watson III
Ernest and Gerda Zeller

Silver Level (\$1,000 +)

Anonymous (1)
David and Billie Bankoff
Liz and Tom Borger
Barbara K. Clausen
Monali and Promit Das
Jack and Phyllis Davis
Katy and Tim Demarais
Robin and Lisa Douglass
William W. Erwin
Tom and Susan Fischbach

Stephen and Barbara Fredman
Craig and Connie Fulmer
Van, Larry & Bill Gates and
Harry Shaffer Family
Mr. and Mrs. Van E. Gates
Dave and Ginny Gibson
Mary Beth and Greg Giczi
William and Leslie Gitlin
Maggie and Steve Goldberg
Dr. Elmer Graber
Edward M. Jordanich
Najeeb and Nancy Khan
Glenn and Patty Killoren
Rebecca and Michael Kubacki
Brian and Ginger Lake
Betty Laramore
Joan and Donald Lyons
Frank and Marsha Martin
Chris Maziar
V. Richard and Jane Miller
Dr. Laura L. Morris
Susan Ohmer and Donald Crafton
Donna and Mark Richter
The Honorable and Mrs.
James W. Rieckhoff
Judith Robert and Thomas
J. Kapacinskas
Maritza Robles
Steve and Connie Rufenbarger
Pat and Sue Ruskowski
Mr. and Mrs. William
J. Schmuhl, Jr.

Cari Shein
James F. and Sherry L. Smith
Tom and Joyce Sopko
Perry Stow and Andrea
Mather-Stow
Douglass J. and Anna
M. Thompson
Mike and Dena Wargo
Jane J. Warner
Peggy Weed
Michael and Julie Yates

Bronze Level (\$500 +)

Anonymous (4)
Dottie and Tom Arnold
Stephen and Nancy Ball
Bruce and Linda Bancroft
Stuart and Paula Barb
Brian and Jeannelle Brady
Edward and Carla Chester
Jack and Karen Cittadine
Gary Cornette and Marsha Miller
Marianne Corr
Thomas and Dorothy Corson
Rosemary and Fred Crowe
Ann and Fred Dean
Mary Pat and Robert Deputy
Greg and Mary Downes
Thomas and Elizabeth Eisele
Ken and Mary Eme
Jill and Chris Erb
Irene Eskridge

Dr. and Mrs. Frederick J. Ferlic
Tony Fitts and Ramona Payne
George and Katherine Freese
Jody and Mike Freid
Joan and Gerald H. Frieling, Jr.
Ruth and George Friend
Steven and Susan Funk
Rodney and Carol Ganey
Mr. and Mrs. John Goebel, Jr.
Dr. Paul and Margie Goldwin
Donald and Lynn Groenleer
James R. Hardesty
Janice and Larry D. Harding
Denise and Angel Hernandez
Anne Hillman
Leonard and Joann Isban
Carol and Craig Kapson
James and Christine Kelly
Gretchen and Dean Kimble
Barbara and Donald T. Kindt
Nels Leininger and Gail English
Gunnel B. Lofgren
Jerry and Becky Lutkus
Mr. and Mrs. Philip Lux
Gail and Robert Martin
Rex and Alice Martin
Barbara and Laurence McHugh
Rodney and Dr. Debra McClain
Tom and Shari Mellin
Brad and Mickey Miller
Jeffrey Miller

Pat and Carol Moody
Carol Ann Mooney and
George Efta
Kevin and Anita Morrison
Mary Naquin
Philip and Mary Newbold
Lida Thompson Norris
Barb and John Phair
Michael and Amy Phend
Nicholas and Jennifer Recchio
Dr. Rob and Lee Riley
Fred and Chris Rowe
Judy and Bob Schmuhl
Robert and Jo Anne Sennett
Tom and Maria Slager
Sonja K. Smith
Carl and Rita Schobert Snyder
Oliver C. Songlingco, M.D., P.C.
Dr. David Taber and
Stephanie Scharf
Paul D. and Mary H. Tipps
Barbara Warner
Phid and Jeff Wells
Dorothy and Dar* Wiekamp
Joseph and Barbara Wind
John and Carolyn Wolf
Douglas and Janette Yoder
Julia Zahler

*Deceased Charter Director



WNIT Television Planner
P.O. Box 7034
South Bend, IN 46634-7034

PERIODICAL

Visit us at



Find us on



BACK TO BROOKLYN
NOVEMBER 29 & DECEMBER 1

BARBRA STREISAND