

PLANNER



Michiana's bi-monthly Guide to WNIT Public Television
Issue No. 1 January – February 2014



DOWNTON ABBEY
SEASON 4 ❁ STARTS JANUARY 5

BOARD OF DIRECTORS

CHAIR

Ida Reynolds Watson

VICE CHAIR

Rodney F. Ganey, Ph.D.

Kevin Morrison

Susan Ohmer, Ph.D.

PRESIDENT AND GENERAL MANAGER

Greg Giczi

TREASURER

Thomas E. Slager

SECRETARY

Cari Shein

DIRECTORS

Thomas G. Coley, Ph.D.

Marvin Curtis

Katy Demarais

Robert G. Douglass

Irene E. Eskridge

David M. Findlay

William A. Gitlin

Tracy D. Graham

Albert L. Gutierrez

James Hillman

Katherine Humphreys

Glenn E. Killoren

Paul A. Marsh

Ryan Matthys

Christine M. Maziar

Mary Louise Miller

Pat Moody

Jill Richardson

Maritza Robles

Joyce F. Stifel

James M. Summers

Thomas Topash

Michael Wargo

Patrick Welch

CHARTER DIRECTORS

Arthur J. Decio

Jerry Hammes

Ernestine M. Raclin

Jane Warner

Dar Wiekamp*

HONORARY LIFE DIRECTOR

Carmi Murphy

*Deceased Charter Director

A MESSAGE FROM GREG GICZI President and GM, WNIT Public Television



Happy New Year WNIT Lovers!

All I can say is, "Wheew!" There were too many things going on in November and December. I had to juggle all of the fabulous programs we presented on your Michiana PBS station with the holidays, holiday parties, holiday shopping and watching football. In fact, I had a very tough time balancing my WNIT viewing time with some of the games I wanted to catch. But, I managed.

WNIT had one of its necessary membership drives in December. We couldn't survive without your ongoing support. We saw nearly 200 new families become part of WNIT, almost 100 lapsed members rejoined, nearly 100 renewed, and about 50 of you added to your annual gift. Thank you to everyone! The strength of what we do is represented by the thousands of you who chose to support WNIT with an annual financial contribution.

I have a new boss. At the recent Annual Meeting of the Board of Directors of Michiana Public Broadcasting Corporation, Ida Watson was elected our chairperson. She succeeds David Findlay, who had served two years as chairperson. Thank you, David. I'm a big fan of Ida. You see, she chaired the search committee that hired me last February. In this edition of the *Planner* you will find a nice article about her.

As we hunker down a bit in these next two months of winter, what could be better than the start of new episodes of *Downton Abbey*? Wherever I go, social occasions, business events, or even a speech, that's the number one question I get, "When is *Downton Abbey* coming back?" It's here! Finally! Starting Sunday, January 5th, 9pm on WNIT, your Michiana PBS station.

The *Downton Abbey* series is certainly not the only great programming you'll find in these next two months. While paging through your *Planner*, you'll find a number that will pique your interest. I'd like to remind you of some of our many locally produced programs of note. *Dinner and a Book*, with Gail Martin, begins its 13th season on Saturday, January 4th. Also beginning its 13th season is *Outdoor Elements* with Evie Kirkwood, on Sunday, January 12th. And, that same day, *Politically Speaking* with host Elizabeth Bennion returns from a holiday hiatus. This is a must-watch program to keep up with Indiana and Michigan politics.

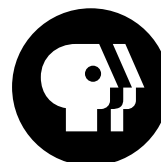
Once again, too many interesting things to pass along and the *Planner* editor gives me such limited space. May the year 2014 bring you good health, happiness and great prosperity. And, along with that prosperity, don't forget your Michiana PBS station, WNIT!

Best wishes,

A handwritten signature in black ink, appearing to read "Greg Giczi".

Greg Giczi
President & General Manager

© 2013 Michiana Public Broadcasting Corporation Statement of Frequency: WNIT PUBLIC TELEVISION PLANNER (USPS 103-650 ISSN 1523-9373) is published bi-monthly by The Michiana Public Broadcasting Corporation, a non-profit corporation in the State of Indiana at 300 West Jefferson Boulevard, South Bend, IN 46601. Periodical postage paid at South Bend, IN and additional mailing offices. POSTMASTER: Send address changes to P.O. Box 7034, South Bend, IN 46634-7034. Editor: Roger Chrastil.



WHAT'S INSIDE?

Worth Watching January	6	Production News	22
Worth Watching February	10	Membership Corner	26
Primetime January	14	WNIT Kids Club	27
Primetime February	16	Honor Roll Members	29
Weekday Programming	18	WNIT Supporters	30
Weekend Programming	19	Supporter Spotlight	31
Overnight Programming	20	Directors' Circle	31

WNIT CHANNEL GUIDE

WNIT 34.1 ON COMCAST

Channel 191

Shown In High Definition

Channel 10

Indiana: South Bend, Mishawaka, Goshen, Bristol, Elkhart, Plymouth, Rochester, Middlebury, Jefferson Township, Wakarusa, Warsaw and eastern LaPorte County

Michigan: Edwardsburg, Niles, Buchanan, Cassopolis, Dowagiac, St. Joseph (city), Benton Harbor, Berrien Springs, Stevensville, and New Buffalo

Channel 4

Indiana: Argos, Bourbon, Bremen, Culver, Knox, Lakeville, LaPaz, Nappanee, North Judson, North Liberty, Syracuse, and Walkerton

Channel 11

Indiana: LaGrange County
Michigan: Constantine and White Pigeon

Channel 26

Indiana: LaPorte (city), western LaPorte County, Porter County and Valparaiso

WNIT 34.1 ON DISH & DIRECT SATELLITE PROVIDERS

OR AT&T U-VERSE

Channel 34

Shown In High Definition

WNIT InFOCUS 34.2 ON COMCAST

Channel 371

Shown In Standard Definition

ROKU

WNIT is excited to announce that the much-anticipated PBS and PBS KIDS channels are now available on Roku! The PBS channel features videos from popular PBS programs. Once you activate the PBS channel and choose WNIT as your local station, you can stream content from WNIT's local productions, as well as short, web-original videos from Webby Award-winning PBS Digital Studios. With the arrival of PBS KIDS channel, junior streamers can enjoy full-length episodes and clips from great shows including *Curious George*, *Daniel Tiger's Neighborhood*, *Dinosaur Train*, *Super WHY!* and *The Cat in the Hat Knows a Lot About That!*

UNITED STATES POSTAL SERVICE STATEMENT OF OWNERSHIP, MANAGEMENT AND CIRCULATION

1. Publication Title: Planner
2. Publication Number: 103-650
3. Filing Date: January 1, 2014
4. Issue Frequency: bi-monthly
5. Number of Issues Published Annually: 6
6. Annual Subscription Price: \$ 50.00 (publication is included in annual membership fee)
7. Complete Mailing address of Known Office of Publication: 300 West Jefferson Boulevard, South Bend IN 46601
Contact Person: Roger Chrastil Telephone number: 574.675.9648
8. Complete Mailing Address of Headquarters or General Business Office of Publisher: 300 West Jefferson Boulevard, South Bend, IN 46601
9. Full Names and Complete Mailing address of Publisher, Editor, and Managing Editor:
Publisher—Greg Giczi, Editor—Roger Chrastil, Managing Editor—Steve Funk, all at 300 West Jefferson Boulevard, South Bend, IN 46601
10. Owner: Michiana Public Broadcasting Corporation
11. Known Bondholders, Mortgagees, and Other Security Holders Owning Holding 1 percent or More of Total Amount of Bonds, Mortgages, or Other Securities: None
12. Tax Status: Not applicable
13. Publication Title: Planner
14. Issue Date for Circulation Data Below: September – October 2013
15. Extent and Nature of Circulation:

	<i>Average No. Copies Each Issue During Preceding 12 Months</i>	<i>Actual No. Copies of Single Issue Published Nearest to Filing Date</i>
a. Total Number of Copies	6031	6000
b. Paid and/or Requested Circulation		
(1) Paid/Requested Outside-County Mail Subscriptions	3150	3474
(2) Paid in-County Subscriptions	2118	2119
(3) Sales Through Dealers and Carriers, Street Vendors, Counter Sales and Other non-USPS Paid Distribution	449	307
(4) Other Classes Mailed	292	100
c. Total Paid and/or Requested Circulation (Sum of 15B (1), (2), (3) and (4))	6009	6000
d. Free Distribution by Mail		
(1) Outside County	0	0
(2) In-County	0	0
(3) Other Classes Mailed Through the USPS	0	0
(4) Free or Nominal Rate Distribution Outside the Mail	0	0
e. Total Free or Nominal Rate Distribution (Sum of 15D (1), (2), (3) and (4))	0	0
f. Total Distribution (Sum of 15C and 15E)	6009	6000
g. Copies Not Distributed	22	0
h. Total (Sum of 15G and 15H)	6031	6000
i. Percent Paid (15C divided by 15F x 100)	100%	100%

16. Publication of Statement of Ownership
This Statement of Ownership will be printed by the January – February 2014 issue of this publication.
17. Signature and Title of Editor, Publisher, Business Manager or Owner: Roger Chrastil, Editor
I certify that all information furnished on this form is true and complete. I understand that anyone who furnishes false or misleading information on this form or who omits material or information requested on the form may be subject to criminal sanctions (including fines and imprisonment) and/or civil sanctions (including multiple damages and civil penalties).



ON THE COVER



DOWNTON ABBEY: SEASON 4

WNIT Public Television proudly presents all eight episodes of MASTERPIECE CLASSIC: "Downton Abbey, Season Four" over both WNIT channels, 34.1 and InFocus 34.2. Season 4 of the international hit finds aristocrats coping with last season's shocking finale. Change is in the air as three generations of the Crawley family have conflicting interests in the estate. Paul Giamatti makes an appearance alongside the beloved returning ensemble, including Dame Maggie Smith, Elizabeth McGovern, Hugh Bonneville, Michelle Dockery, Jim Carter, Joanne Froggatt, guest star Shirley MacLaine and many others.

The new season will air on eight consecutive Sundays, January 5 through February 23 at 9pm. Each episode is then repeated the following Sunday before the next episode.

Downton Abbey: Season 4 is underwritten by 1st Source Bank, Center for History, Center for Hospice Care, Hartzler Gutermuth Inman Funeral Home, Indiana Trust & Investment Company, Nyloncraft and South Bend Career Academy.



Part 1 – Jan 5, 9pm and Jan 12, 7pm

Six months after Matthew's death, family and servants try to cure Mary and Isobel of their deep depression. Meanwhile, O'Brien causes a final crisis.

Part 2 – Jan 12, 9pm and Jan 19, 8pm

The fates of several characters converge at a glittering house party. Gregson impresses Robert, and Anna faces trouble.

Part 3 – Jan 19, 9pm and Jan 26, 8pm
Love is in the air at Downton Abbey, and darker emotions too, as Mary, Edith, Tom and Anna each struggle with a dilemma.

Part 4 – Jan 26, 9pm and Feb 2, 8pm

Can Bates learn what's troubling Anna? Meanwhile, Thomas installs a new ally and Alfred takes up cooking.

Part 5 – Feb 2, 9pm and Feb 9, 8pm

Rose's surprise party for Robert risks scandal. Mary meets an old suitor, and Edith gets troubling news.

Part 6 – Feb 9, 9pm and Feb 16, 8pm

When Robert and Thomas make a sudden trip, everyone's life becomes more complicated. Mary and Blake come together over pigs. An unwelcome visitor appears.

Part 7 – Feb 16, 9pm and Feb 23, 7:30pm

Robert and Thomas return from America. Bates disappears for a day, Edith prepares to go abroad, suitors flock to Mary and Rose makes her move.

Part 8 – Feb 23, 9pm

To be announced

Downton Abbey: Season 4

Starts January 5 at 9pm

“★★★★”
PEOPLE

“AN ABSOLUTE PLEASURE”
THE HOLLYWOOD REPORTER

“CAPTIVATING”
LIFE & STYLE



A NEW SEASON OF SECOND CHANCES.

DOWNTON ABBEY

MASTERPIECE

SUN JAN 5 9/8c



Be more.



PBS

Funding for MASTERPIECE is provided by



RALPH LAUREN

A Carnival/Masterpiece
Co-Production

pbs.org/downton #DowntonPBS

WORTH WATCHING JANUARY




Great Performances: Barrymore



The Poisoner's Handbook: American Experience

All programs are on both 34.1 and 34.2 unless noted.

GREAT PERFORMANCES

"FROM VIENNA: THE NEW YEAR'S CELEBRATION 2014" – WEDNESDAY, JANUARY 1, 8PM 

We ring in the New Year with the Vienna Philharmonic at the opulent Musikverein, under the baton of guest conductor Daniel Barenboim and featuring everyone's favorite Strauss Family waltzes accompanied by the beautiful dancing of the Vienna City Ballet. Stage and screen legend Julie Andrews will return as host.

"BARRYMORE" – FRIDAY, JANUARY 31, 9PM

In "Barrymore," 84-year-old stage and screen legend Christopher Plummer portrays another titan of theater and film from an earlier age, the illustrious — and notorious — John Barrymore. This acclaimed film adaptation of William Luce's 1997 play is set in 1942 during the final months of Barrymore's life.

SECRETS OF HIGHCLERE CASTLE SUNDAY, JANUARY 5, 8PM

In its heyday, 1,300 year old Highclere was the social epicenter of Edwardian England. See how all the inhabitants of Highclere lived, from the aristocrats who enjoyed a life of luxury to the army of servants toiling "below stairs." Also find out how the current inhabitants, Lord and Lady Carnarvon, spend their \$1 million in annual upkeep funds.

AMERICA IN PRIMETIME MONDAYS, 10PM

"INDEPENDENT WOMAN" – JANUARY 6

Witness the transformation of women from model housewives to complex, and sometimes controversial, characters. Interviews include Roseanne Barr ("Roseanne"); Candice Bergen ("Murphy Brown"); Eva Longoria and Felicity Huffman ("Desperate Housewives"); Robert and Michelle King and Julianna Margulies ("The Good Wife"); James L. Brooks and Mary Tyler Moore ("The Mary Tyler Moore Show"); Shonda Rhimes and Sandra Oh ("Grey's Anatomy"); and Liz Brixius and Linda Wallem ("Nurse Jackie").

"THE MISFIT"—JANUARY 20

Celebrate the unique characters who defied comic stereotypes and societal expectations to reflect America's diverse personalities. Interviews include Alec Baldwin ("30 Rock"); Diablo Cody ("The United States of Tara"); Greg Daniels and Rainn Wilson ("The Office"); Larry David ("Curb Your Enthusiasm" and "Seinfeld"); Paul Feig and Judd Apatow ("Freaks and Geeks"); Mitchell Hurwitz ("Arrested Development"); Mike Judge ("Beavis and Butthead"); and Garry Shandling ("The Larry Sanders Show").

THE POISONER'S HANDBOOK: AMERICAN EXPERIENCE TUESDAY, JANUARY 7, 8PM

In the early 20th century, the average American medicine cabinet was a would-be poisoner's treasure chest: radioactive radium in health tonics, thallium in depilatory creams, morphine in teething medicine and potassium cyanide in cleaning supplies. While the tools of the murderer's trade multiplied as the pace of industrial innovation increased, the scientific knowledge (and political will) to detect and prevent the crimes lagged.



VISIT WNIT.ORG/PROGRAMS FOR MORE!



1964: American Experience



Chasing Shackleton

LIVE FROM LINCOLN CENTER: RICHARD TUCKER OPERA GALA 2013

FRIDAY, JANUARY 10, 9PM

This year's Richard Tucker Foundation Gala — a perennial highlight of the opera season — celebrates Richard Tucker's centennial with performances by many of the world's greatest voices and a salute to this year's award winner, Isabel Leonard.

1964: AMERICAN EXPERIENCE

TUESDAY, JANUARY 14, 8PM 

It was the year of the Beatles and the Civil Rights Act; of the Gulf of Tonkin and Barry Goldwater's presidential campaign; the year that cities across the country erupted in violence and Americans tried to make sense of the Kennedy assassination. Based on *The Last Innocent Year: America in 1964* by Jon Margolis, this film follows some of the most prominent figures of the time — Lyndon B. Johnson, Martin Luther King, Jr., Barry Goldwater, Betty Friedan.

ANTIQUES ROADSHOW

**MONDAYS, 8PM AND
THURSDAYS, 10PM** 

“BOISE” (Hour One) — JANUARY 6

ANTIQUES ROADSHOW kicks off season 18 with a treasure-filled visit to Boise, Idaho! During ROADSHOW's first-ever trip to Idaho, host Mark L. Walberg and appraiser Peter J. Shemonsky take a trip to the Egyptian Theatre to look at dazzling Egyptian Revival jewelry. Highlights include a first edition of the Book of Mormon; a 1955 Madoura plate designed by Picasso; and a 1858 oil painting by Sanford Robinson Gifford, valued at \$300,000.

**“DETROIT” (Hour One) —
JANUARY 27**

ANTIQUES ROADSHOW is in Detroit, Michigan, where host Mark L. Walberg and appraiser Laura Woolley head to the Motown Museum. Highlights include a 1970 Andy Warhol poster signed by Warhol himself; an early 20th-century collection of Pewabic pottery; and a working script of *The Wizard of Oz*, used on set by Bert Lahr, the “Cowardly Lion,” and appraised for \$150,000.

Underwritten by 1st Source Bank, Alick's Home Medical, Center for Hospice Care, Gibson, The Gibson Foundation, Goshen Antique Mall and Northern Box Company

CHASING SHACKLETON

WEDNESDAYS, JANUARY 8-22, 10PM

EPISODE ONE — JANUARY 8

Veteran polar explorer Tim Jarvis is on a mission to discover exactly what happened on the most famous survival story in expedition history — Sir Ernest Shackleton's 800-mile boat journey across the Southern Ocean and deadly mountain crossing of South Georgia.

EPISODE TWO — JANUARY 15

Following in the wake of legendary polar explorer Sir Ernest Shackleton, a team of six men risks their lives to discover what it's like on the greatest survival journey of all time. In a 22-foot replica wooden lifeboat, with 100-year-old equipment, clothes and rations, the team battles 800 miles across the roughest ocean on the planet.

EPISODE THREE — JANUARY 22

Following the successful sea crossing from Elephant Island, Tim Jarvis must now traverse the mountains of South Georgia to complete his re-enactment of Shackleton's “double.” But injury, illness and bad weather are against him.

WORTH WATCHING JANUARY



Masterpiece Mystery! Sherlock, Season 3



Nature: The Funkiest Monkeys

GREAT PERFORMANCES AT THE MET: EUGENE ONEGIN FRIDAY, JANUARY 17, 9PM

Acclaimed English director Deborah Warner's new production of Tchaikovsky's most popular opera is directed by her longtime collaborator Fiona Shaw and conducted by Valery Gergiev. Anna Netrebko reprises her company role debut as Tatiana, the naïve heroine of Pushkin's classic novel.

MASTERPIECE MYSTERY! SHERLOCK, SEASON 3 SUNDAY, 10 PM AND THURSDAY, 9PM

"THE EMPTY HEARSE" — JANUARY 19 AND JANUARY 23

Sherlock returns! But for John Watson it might be a case of "be careful what you wish for."

"THE SIGN OF THREE" — JANUARY 26 AND JANUARY 30

Sherlock faces his biggest challenge of all — delivering a Best Man's speech on John's wedding day.

Underwritten by Gene's Camera, Nunemaker's and Tuesday, Hall, Konopa, LLP

NATURE WEDNESDAYS, 8PM

"MEET THE COYWOLF" — JANUARY 22

The coywolf, a mixture of western coyote and eastern wolf, is a hauntingly beautiful carnivore found increasingly on the streets of North American cities. New York wildlife biologist Roland Kays is fascinated by this new hybrid, the product of a shifting gene pool that is now stabilizing. Kays tracks and photographs coywolves with remote motion sensor cameras to unravel the mysteries that define this new species.

"THE FUNKIEST MONKEYS" — JANUARY 29

Twenty-five years ago, filmmaker Colin Stafford-Johnson travelled to Sulawesi in Indonesia and fell in love with crested black macaques. These feisty monkeys are beach bums with punk hairstyles, expressive faces, copper-colored eyes and some very unusual habits, making them some of the most charismatic of all monkeys. They exist only on this one island.

Underwritten by Martin's Super Markets

NOVA WEDNESDAYS, 9PM

"ALIEN PLANETS REVEALED" — JANUARY 8

NASA's planet-hunting Kepler Telescope has discovered thousands of exotic new worlds far beyond our solar system. Are any of them like Earth? And what sort of life could flourish on them? With vivid animation and input from expert astrophysicists and astrobiologists, NOVA takes you on a mind-bending exploration of these strange worlds and the possible creatures we might one day encounter there.

"ZEPPELIN TERROR ATTACK" — JANUARY 15

NOVA tells the largely unknown story of the first bombing of civilian populations, when zeppelins delivered a deadly payload to the heart of London in World War I. The program explores the engineering arms race that unfolded as Britain scrambled to develop defenses and aircraft that could neutralize the threat, while Germany responded with ever bigger and more powerful zeppelins.

Underwritten by 1st Source Bank and Zimmer



VISIT WNIT.ORG/PROGRAMS FOR MORE!



Salinger: American Masters



The Amish: American Experience

WAR LETTERS: AMERICAN EXPERIENCE

TUESDAY, JANUARY 21, 8PM

This collection of personal correspondence brings to life the deepest, most human side of war, from the American Revolution to the Gulf War. Based on Andrew Carroll's bestseller, *War Letters: Extraordinary Correspondence From American Wars*, this film explores the love, passion, pain, horror and hope of the men and women who fought and those who waited at home.

SALINGER: AMERICAN MASTERS

TUESDAY, JANUARY 21, 9PM

AMERICAN MASTERS' 200th episode features interviews with 150 subjects, including J.D. Salinger's friends, colleagues and members of his inner circle, as well as film footage, photographs and other material that has never been seen. The film is the first work to get beyond the *Catcher in the Rye* author's meticulously built-up wall: his childhood, painstaking work methods, marriages, private world and the secrets he left behind after his death in 2010.

MARGARET MITCHELL: AMERICAN REBEL:

AMERICAN MASTERS

FRIDAY, JANUARY 24, 10PM

Discover the Pulitzer Prize-winning author behind *Gone With the Wind*, one of the world's best-selling novels that features two of the world's great lovers — Scarlett and Rhett — and was adapted into one of the most popular films of all time. No ordinary writer — or woman — Margaret Mitchell was a charismatic force who challenged the stifling Southern social order and struggled with the changing role of women and the liberation of African Americans.

THE AMISH: AMERICAN EXPERIENCE

TUESDAY, JANUARY 28, 8PM

THE AMISH answers many questions Americans have about this insistently insular religious community, whose intense faith and adherence to 300-year-old traditions have by turns captivated and repelled for more than a century. The film is the first to penetrate deeply and explore this attention-averse group.

HAWKING

WEDNESDAY, JANUARY 29, 10PM

This is the intimate and revealing story of Stephen Hawking's life. Told for the first time in Hawking's own words and with unique access to his home and public life, this is a personal journey through Hawking's world. It tells Hawking's life journey, from boyhood under-achiever to Ph.D. genius, and from a healthy cox on the Oxford rowing team to diagnosis of motor neuron disease, his greatest scientific discoveries and his rise to fame.

WORTH WATCHING FEBRUARY



Antiques Roadshow



POV: American Promise

All programs are on both 34.1 and 34.2 unless noted.

MASTERPIECE MYSTERY! SHERLOCK, SEASON 3

SUNDAY, FEBRUARY 2, 10PM

“HIS LAST VOW”

To Sherlock Holmes, Charles Augustus Magnussen is the Napoleon of blackmail — and the one man he truly hates.

Underwritten by Gene's Camera, Nunemaker's and Tuesday, Hall, Konopa, LLP

ANTIQUES ROADSHOW

MONDAYS, 8PM AND THURSDAYS,
10PM 

“DETROIT” (Hour Two) – MONDAY, FEBRUARY 3

ANTIQUES ROADSHOW is revving up in Motor City as host Mark L. Walberg and appraiser Noel Barrett head to the Ypsilanti Automotive Heritage Museum to explore model cars made by Hudson Car Company. Highlights include Marvin Gaye's 1964 passport, purchased for 50¢ at an estate sale, and a signed photo album of President Abraham Lincoln and his cabinet and Senate.

Underwritten by 1st Source Bank, Alick's Home Medical, Center for Hospice Care, Gibson, The Gibson Foundation, Goshen Antique Mall and Northern Box Company

POV

“AMERICAN PROMISE” – MONDAY, FEBRUARY 3, 10PM

“American Promise” spans 13 years as two middle-class African-American parents in Brooklyn, New York, turn their cameras on their son and his best friend, who make their way through Manhattan's Dalton School, one of the most prestigious private schools in the country. This provocative, intimate documentary presents complicated truths about America's struggle to come of age on issues of race, class and opportunity.

“LISTENING IS AN ACT OF LOVE: A STORYCORPS SPECIAL” – FEBRUARY 7, 10:30PM

The first-ever animated special from StoryCorps celebrates the transformative power of listening. The special features six stories from 10 years of the innovative oral history project, when everyday people sit down together to share memories and tackle life's important questions.

THE AMISH SHUNNED: AMERICAN EXPERIENCE TUESDAY, FEBRUARY 4, 9PM

Follow seven former members of an Amish community, filmed over the course of 12 months, as they reflect on their decisions to leave one of the most closed and tightly knit communities in the United States. Estranged

from family, the ex-Amish find themselves struggling to understand and make their way in modern America.

NOVA

WEDNESDAYS, 9PM

“ROMAN CATACOMB MYSTERY” – FEBRUARY 5

Beneath the streets of Rome lies an ancient city of the dead known as the catacombs — a labyrinth of tunnels, hundreds of miles long — a cemetery for the citizens of ancient Rome. In 2002, maintenance workers stumbled through an opening in one of the tunnel walls and discovered a previously unknown complex of six small rooms, each stacked floor to ceiling with skeletons. It was a mass grave, locked away for nearly 2,000 years.

“GREAT CATHEDRAL MYSTERY” – FEBRUARY 12

The dome that crowns Florence's great cathedral of Santa Maria del Fiore — the Duomo — is a masterpiece of Renaissance ingenuity and an enduring source of mystery. Still the largest masonry dome on earth, it is taller than the Statue of Liberty and weighs as much as an average cruise ship.

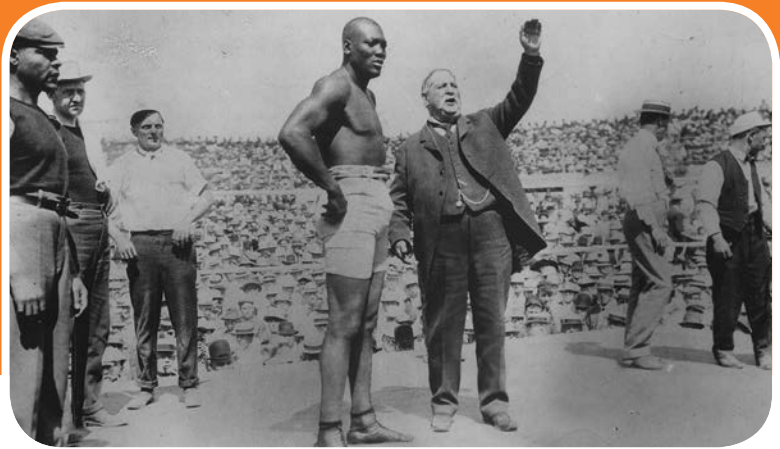
Underwritten by 1st Source Bank and Zimmer



VISIT WNIT.ORG/PROGRAMS FOR MORE!



American Masters: Alice Walker



Unforgivable Blackness: The Rise and Fall of Jack Johnson

SUPER SKYSCRAPERS

WEDNESDAYS, FEBRUARY 5-26,
10PM

“ONE WORLD TRADE CENTER” – FEBRUARY 5

One World Trade Center, the tallest building in the western hemisphere and a famous modern landmark, is engineered to be the safest and strongest skyscraper ever built. This episode follows the final year of exterior construction, culminating with the milestone of reaching the symbolic height of 1,776 feet. This is a construction job suffused with the history of the site and a sense of duty to rebuild from the ashes of Ground Zero.

“THE VERTICAL CITY” – FEBRUARY 19

Shanghai Tower isn't just a skyscraper — it's a vertical city, a collection of businesses, services and hotels all in one place, fitting a population the size of Monaco into a footprint the size of a football field. Within its walls, residents can literally work, rest, play and relax in public parks, looking up through 12 stories of clear space. Not just one, however, but eight of them, stacked on top of each other, all the way to the 120th floor.

“THE BILLIONAIRE BUILDING” – FEBRUARY 26

Upon completion, One57, on Manhattan's 57th Street, will rise more than 1,000 feet, making it the tallest residential tower in the western hemisphere and boasting spectacular views of Central Park. Condominiums at One57 showcase state-of-the-art interiors — double-height ceilings, full-floor apartments, bathrooms clad in the finest Italian marble and the finest material finishes.

AMERICAN MASTERS: ALICE WALKER: BEAUTY IN TRUTH

FRIDAY, FEBRUARY 7, 9PM

Most famous for her seminal novel *The Color Purple*, writer/activist Alice Walker celebrates her 70th birthday. Born February 9, 1944, into a family of sharecroppers in rural Georgia, she came of age during the violent racism and seismic social changes of mid-20th-century America. Her mother, poverty and participation in the civil rights movement were the formative influences on her consciousness, becoming the inherent themes in her writing.

UNFORGIVABLE BLACKNESS: THE RISE AND FALL OF JACK JOHNSON

MONDAY, FEBRUARY 10, 10PM

This film by Ken Burns chronicles the life and career of boxer Jack Johnson, the first African-American heavyweight champion and one of the greatest fighters of the 20th century. Johnson ultimately lost his title in a bout in Cuba in 1915, after fleeing the United States following his federal conviction for allegedly violating the Mann Act.

BILLY THE KID: AMERICAN EXPERIENCE

TUESDAY, FEBRUARY 11, 8PM

On April 28, 1881, 21-year-old Henry McCarty, alias Billy the Kid, just days from being hanged for murder, outfoxed his jailors and electrified the nation with the latest in a long line of daring escapes. Just a few weeks later, the notorious young outlaw was gunned down by an ambitious sheriff. The Kid was soon mythologized by a never-ending stream of dime-store romances and later, big-screen dramas.

WORTH WATCHING FEBRUARY



Grand Coulee Dam: American Experience



Great Performances: Sting: The Last Ship

BUTCH CASSIDY & THE SUNDANCE KID: AMERICAN EXPERIENCE

TUESDAY, FEBRUARY 11, 9PM

Long before Paul Newman and Robert Redford immortalized them on screen, Butch Cassidy and the Sundance Kid captivated Americans from coast to coast. In the 1890s, their exploits — robbing banks and trains in the West and then seemingly vanishing into thin air — became national news and the basis of rumors and myth.

THE AFRICAN AMERICANS: MANY RIVERS TO CROSS

Noted Harvard scholar Henry Louis Gates, Jr. recounts the full trajectory of African-American history in his groundbreaking six-part series.

SUNDAY, FEBRUARY 16, 3-7PM

“THE BLACK ATLANTIC
(1500-1800)”

“THE AGE OF SLAVERY
(1800 -1860)”

“INTO THE FIRE
(1861-1896)”

SUNDAY, FEBRUARY 23, 3-7PM

“MAKING A WAY OUT OF NO WAY
(1897-1940)”

“RISE! (1940-1968)”

“A MORE PERFECT UNION
(1968-2013)”

MURDER ON THE HOME FRONT SUNDAY, FEBRUARY 16, 10PM

When young women are found murdered amid the chaos of the London Blitz of World War II, brilliant Home Office Pathologist Dr. Lennox Collins, on his first murder case, and his newly recruited assistant Molly Cooper clash with the police over just who the main suspect is.

GRAND COULEE DAM: AMERICAN EXPERIENCE

TUESDAY, FEBRUARY 18, 8PM 

Grand Coulee played a central role in transforming the Northwest; it was the largest hydroelectric power producing facility in the world when it was completed in March 1941. After WWII, an irrigation project made possible by the dam helped turn the deserts of central Washington into rich farmland. But the dam prevented access to one of the greatest salmon rivers in the world.

NATURE

WEDNESDAYS, 8PM 

“HONEY BADGERS: MASTERS OF
MAYHEM” – FEBRUARY 19

“Honey badger is bad ass.” Those words and corresponding video became a YouTube sensation, with 51 million hits. This “thug of the savannah” is one the most fearless animals in the world, renowned for its ability to confront grown lions, castrate charging buffalo and shrug off the toxic defenses of stinging bees, scorpions and snakes.

Underwritten by Martin's Super Markets

GREAT PERFORMANCES FRIDAYS, 9PM

“STING: THE LAST SHIP” –
FEBRUARY 21

Rock ‘n’ roll Renaissance man Sting has embarked on a new venture, The Last Ship, a musical play for which he has written original music and lyrics. Exploring a range of universal themes, The Last Ship dramatizes the impact of the demise of the ship-building industry in Sting’s home town of Wallsend, England.



VISIT WNIT.ORG/PROGRAMS FOR MORE!



The March



Triangle Fire: American Experience

THE RISE AND FALL OF PENN STATION: AMERICAN EXPERIENCE

TUESDAY, FEBRUARY 18, 9PM

One of the greatest architectural and engineering achievements of its time, New York's Pennsylvania Station opened to the public in 1910. Designed by renowned architect Charles McKim, the station was a massive civil engineering project, covering nearly eight acres and requiring the construction of 16 miles of underground tunnels.

THE MARCH

MONDAY, FEBRUARY 24, 10PM

Witness the compelling and dramatic story of the 1963 March on Washington, where Dr. Martin Luther King, Jr. gave his stirring "I Have a Dream" speech. This watershed event in the Civil Rights Movement helped change the face of America. The film reveals the dramatic story behind the event through the memories of key players such as Jack O'Dell, Clarence B. Jones, Julian Bond and Andrew Young.

TRIANGLE FIRE: AMERICAN EXPERIENCE

TUESDAY, FEBRUARY 25, 8PM 

On March 25, 1911, a fire ripped through the Triangle Shirtwaist Factory in New York's Greenwich Village. Terrified workers tried to make their way downstairs, but the factory owners kept the doors on the ninth floor locked, and the inadequate fire escape soon crumpled. Hundreds of horrified on-lookers watched as young men and women jumped from the windows. By the time the fire burned out, 146 people were dead.

JAZZ AND THE PHILHARMONIC

FRIDAY, FEBRUARY 28, 9PM

JAZZ AND THE PHILHARMONIC is a unique, generational and wholly American concert experience that highlights two of the greatest musical art forms the world has ever seen, classical and jazz. With performances by artists such as Chick Corea, Bobby McFerrin, Terence Blanchard and Elizabeth Joy Roe, this special emphasizes the works of legendary past composers such as Bach and Mozart with these contemporary artists.

LOCAL PROGRAMMING HIGHLIGHTS

OUTDOOR ELEMENTS

Sundays 9:00am

Host Evie Kirkwood returns for her 13th season of featuring all things from the great outdoors. The following programs kick off the season in January:

Birds, Bison & Bugs - Jan 12

Growing Communities - Jan 19

Get Outside! - Jan 26

DINNER&BOOK

Saturdays 10:30am

From the bookshelf to the kitchen, host Gail Martin returns for her 13th season with new recipes and best-sellers. Following are the books and co-hosts that Gail will bring to the table in February:

Havana Nocturne
w/ co-host Angel Hernandez - Feb 1

Twist'D Dreams
w/ co-host Irene Eskridge - Feb 8

Lean In
w/ co-host Alice Martin - Feb 15

Lady Almina and the Real Downton Abbey
w/ co-host Tuck Langland (repeat) - Feb 22

PRIMETIME – (34.1)

JANUARY



	8:00 pm	8:30 pm	9:00 pm	9:30 pm	10:00 pm	10:30 pm	11:00 pm	11:30 pm
1 Wed	From Vienna: New Year's Celebration 2014			Victor Borge Comedy in Music			Charlie Rose	
2 Thu	Ask An Expert		Antiques Roadshow: Phoenix, AZ		Antiques Roadshow: Phoenix, AZ		Charlie Rose	
3 Fri	Washington Week	Economic Outlook	Return To Downton Abbey	Secrets Of Highclere Castle		Return To Downton Abbey	Charlie Rose	
4 Sat	Antiques Roadshow: Phoenix, AZ		Keeping Up Appearances	Keeping Up Appearances	As Time Goes By	As Time Goes By	Globe Trekker: WWII In The Pacific	
5 Sun	Secrets Of Highclere Castle		Downton Abbey Season 4 Premiere, Pt. 1				Downton Abbey, Pt. 1	
6 Mon	Antiques Roadshow: Boise, ID		Antiques Roadshow: Tulsa, OK		America In Primetime: Independent Woman		Charlie Rose	
7 Tue	American Experience: Poisoner's Handbook				Frontline		Charlie Rose	
8 Wed	Nature: Legendary White Stallions		NOVA: Alien Planets Revealed		Chasing Shackleton, Pt. 1		Charlie Rose	
9 Thu	Ask An Expert		Antiques Roadshow: Tulsa, OK		Antiques Roadshow: Boise, ID		Charlie Rose	
10 Fri	Washington Week	Economic Outlook	Live From Lincoln Center: Richard Tucker, Opera Gala 2014				Charlie Rose	
11 Sat	Antiques Roadshow: Boise, ID		Keeping Up Appearances	Keeping Up Appearances	As Time Goes By	As Time Goes By	Globe Trekker: Antarctica	
12 Sun	Downton Abbey, Pt. 1		Downton Abbey, Pt. 2		Masterpiece Mystery! Sherlock		Secrets Of The Manor House	
13 Mon	Antiques Roadshow: Boise, ID		Antiques Roadshow: Tulsa, OK		America In Primetime: Man Of The House		Charlie Rose	
14 Tue	American Experience: 1964				Frontline		Charlie Rose	
15 Wed	Nature: The Private Life Of Deer		NOVA: Zeppelins		Chasing Shackleton, Pt. 2		Charlie Rose	
16 Thu	Ask An Expert		Masterpiece Mystery! Sherlock		Antiques Roadshow: Boise, ID		Charlie Rose	
17 Fri	Washington Week	Economic Outlook	Great Performances At The Met: Eugene Onegin					
18 Sat	Antiques Roadshow: Boise, ID		Keeping Up Appearances	Keeping Up Appearances	As Time Goes By	As Time Goes By	Globe Trekker: Caribbean Islands	
19 Sun	Downton Abbey, Pt. 2		Downton Abbey, Pt. 3		Masterpiece Mystery! Sherlock, Season 3: The Empty Hearse			
20 Mon	Antiques Roadshow: Boise, ID		Antiques Roadshow: Tulsa, OK		America In Primetime: The Misfit		Charlie Rose	
21 Tue	American Experience: War Letters		American Masters: Salinger					Nightly Business Report
22 Wed	Nature: Meet The Coywolf		NOVA: Rise Of The Drones		Chasing Shackleton, Pt. 3		Charlie Rose	
23 Thu	Ask An Expert		Masterpiece Mystery! Sherlock, Season 3: The Empty Hearse				Charlie Rose	
24 Fri	Washington Week	Economic Outlook	Shadow Of Mary Poppins		Margaret Mitchell: American Rebel		Charlie Rose	
25 Sat	John Sebastian Presents Folk Rewind				Joe Bonamassa: Evening at Vienna Opera House			3 Steps Health
26 Sun	Downton Abbey, Pt. 3		Downton Abbey, Pt. 4		Masterpiece Mystery! Sherlock, Season 3: The Sign Of Three			
27 Mon	Antiques Roadshow: Detroit, MI		Antiques Roadshow: Eugene, OR		America In Primetime: The Crusader		Charlie Rose	
28 Tue	American Experience: The Amish				NFL's Concussion Crisis			
29 Wed	Nature: Funkiest Monkeys		NOVA: Ghosts of Murdered Kings		Hawking		Charlie Rose	
30 Thu	Ask An Expert		Masterpiece Mystery! Sherlock, Season 3: The Sign Of Three				Charlie Rose	
31 Fri	Washington Week	Economic Outlook	Great Performances: Barrymore			Arch. M. Graves	Charlie Rose	

PRIMETIME – (34.2)

JANUARY



	8:00 pm	8:30 pm	9:00 pm	9:30 pm	10:00 pm	10:30 pm	11:00 pm	11:30 pm	
1 Wed	Exp. Michiana	Outdoor Elements	Start Up	Victor Borge: Comedy In Music			Charlie Rose		
2 Thu	Exp. Michiana	Just Seen It	Masterpiece Mystery! Sherlock, Season 1			Antiques Roadshow: Phoenix, AZ		Return To Downton Abbey	
3 Fri	Exp. Michiana	Charlie Rose	Carol Burnett				Charlie Rose		
4 Sat	Carol Burnett				Antiques Roadshow: Phoenix, AZ		Austin City Limits		
5 Sun	Secrets Of Highclere Castle		Downton Abbey Season 4 Premiere, Pt. 1				Austin City Limits		
6 Mon	Exp. Michiana	Dinner & A Book	Antiques Roadshow: Tulsa, OK		Independent Lens: The Invisible War			Sky Island	
7 Tue	Exp. Michiana	Start Up	Antiques Roadshow: Boise, ID		Frontline		Charlie Rose		
8 Wed	Exp. Michiana	Outdoor Elements	NOVA: Alien Planets Revealed		Chasing Shackleton, Pt. 1		Charlie Rose		
9 Thu	Exp. Michiana	Just Seen It	Masterpiece Mystery! Sherlock, Season 1			Antiques Roadshow: Boise, ID		Ribbon Of Sand	
10 Fri	Exp. Michiana	Charlie Rose	Live From Lincoln Center: Richard Tucker, Opera Gala 2014				Charlie Rose		
11 Sat	Live From Lincoln Center: Richard Tucker, Opera Gala 2014				Chasing Shackleton, Pt. 1		Austin City Limits		
12 Sun	Downton Abbey, Pt. 1		Downton Abbey, Pt. 2		Unlocking Sherlock		Austin City Limits		
13 Mon	Exp. Michiana	Dinner & A Book	Antiques Roadshow: Tulsa, OK		Antiques Roadshow: Boise, ID		Charlie Rose		
14 Tue	Exp. Michiana	Start Up	Shelter Me Let's Go Home		Frontline		Charlie Rose		
15 Wed	Exp. Michiana	Outdoor Elements	NOVA: Zeppelins		Chasing Shackleton, Pt. 2		Charlie Rose		
16 Thu	MI State of State	Exp. Michiana	Masterpiece Mystery! Sherlock, Season 1			Antiques Roadshow, Boise, ID		Ribbon Of Sand	
17 Fri	Exp. Michiana	Charlie Rose	Great Performances At The Met: Eugene Onegin						
18 Sat	Great Performances At The Met: Eugene Onegin						Austin City Limits		
19 Sun	Downton Abbey, Pt. 2		Downton Abbey, Pt. 3		Masterpiece Mystery! Sherlock. Season 3: The Empty Hearse				
20 Mon	Exp. Michiana	Dinner & A Book	Antiques Roadshow: Tulsa, OK		Independent Lens: Blood Brother			Ribbon Of Sand	
21 Tue	Exp. Michiana	Start Up	American Masters: Salinger						Sky Island
22 Wed	Exp. Michiana	Outdoor Elements	NOVA: Rise Of The Drones		Chasing Shackleton, Pt. 3		Charlie Rose		
23 Thu	Exp. Michiana	Just Seen It	Masterpiece Mystery! Sherlock, Season 3: The Empty Hearse				Charlie Rose		
24 Fri	Exp. Michiana	Charlie Rose	Real Mary Poppins		Music Makes A City		Charlie Rose		
25 Sat	John Sebastian Presents Folk Rewind				Joe Bonamassa: Evening at Vienna Opera House			3 Steps Health	
26 Sun	Downton Abbey, Pt. 3		Downton Abbey, Pt. 4		Masterpiece Mystery! Sherlock, Season 3: The Sign Of Three				
27 Mon	Exp. Michiana	Dinner & A Book	Antiques Roadshow: Eugene, OR		Independent Lens: The State Of Arizona			Sky Island	
28 Tue	Exp. Michiana	Start Up	Flight: The Genius Of Birds		Frontline		Charlie Rose		
29 Wed	Exp. Michiana	Outdoor Elements	NOVA: Murdered Kings		Hawking: A Brief History Of Mine		Charlie Rose		
30 Thu	Exp. Michiana	Just Seen It	Masterpiece Mystery! Sherlock, Season 3: The Sign Of Three				Charlie Rose		
31 Fri	Exp. Michiana	Charlie Rose Wknd	Great Performances: Barrymore			Arch. M. Graves	Charlie Rose		

PRIMETIME – (34.1)

FEBRUARY



	8:00 pm	8:30 pm	9:00 pm	9:30 pm	10:00 pm	10:30 pm	11:00 pm	11:30 pm
1 Sat	Antiques Roadshow: Detroit, MI		Keeping Up Appearances	Keeping Up Appearances	As Time Goes By	As Time Goes By	Globe Trekker: Mozambique	
2 Sun	Downton Abbey, Pt. 4		Downton Abbey, Pt. 5		Masterpiece Mystery! Sherlock, Season 3: His Last Vow			
3 Mon	Antiques Roadshow: Detroit, MI		Antiques Roadshow: Eugene, OR		POV: American Promise			
4 Tue	Nazi Mega Weapons: Super Tanks		American Experience: The Amish Shunned				Charlie Rose	
5 Wed	Nature: An Original Duckumentary		NOVA: Roman Catacomb Mystery		Super Skyscrapers: One Trade Center		Charlie Rose	
6 Thu	As An Expert		Masterpiece Mystery! Sherlock, Season 3: His Last Vow				Charlie Rose	
7 Fri	Washington Week	Economic Outlook	American Masters: Alice Walker, Beauty In Truth			POV: Listening Is An Act Of Love	Charlie Rose	
8 Sat	Antiques Roadshow: Detroit, MI		Keeping Up Appearances	Keeping Up Appearances	As Time Goes By	As Time Goes By	Globe Trekker: Alps & Lapland	
9 Sun	Downton Abbey, Pt. 5		Downton Abbey, Pt. 6		The Making Of A Lady			Secrets Of Chatsworth
10 Mon	Antiques Roadshow: Detroit, MI		Antiques Roadshow: Eugene, OR		Unforgivable Blackness: The Rise And Fall Of Jack Johnson			
11 Tue	American Experience: Billy The Kid		Butch Cassidy & The Sundance Kid		Frontline		Charlie Rose	
12 Wed	Nature: The Animal House		NOVA: Great Cathedral Mystery		Super Skyscrapers: Building The Future		Charlie Rose	
13 Thu	Ask An Expert		Antiques Roadshow: Detroit, MI		Independent Lens: Soul Food Junkies		Charlie Rose	
14 Fri	Washington Week	Economic Outlook	Great Performances: National Theatre 50 Years On Stage				Charlie Rose	
15 Sat	Antiques Roadshow: Detroit, MI		Keeping Up Appearances	Keeping Up Appearances	As Time Goes By	As Time Goes By	Globe Trekker: Ice Trekking In The Alps	
16 Sun	Downton Abbey, Pt. 6		Downton Abbey, Pt. 7		Murder On The Homefront			Secrets Of Althorp
17 Mon	Antiques Roadshow: Baton Rouge, LA		Antiques Roadshow: Pittsburgh, PA		Unforgivable Blackness: The Rise And Fall Of Jack Johnson			
18 Tue	Grand Coulee Dam		Rise And Fall Of Penn Station		Frontline		Charlie Rose	
19 Wed	Nature: Honey Badgers		NOVA: Mystery Of Easter Island		Super Skyscrapers: The Vertical City		Charlie Rose	
20 Thu	Ask An Expert		Antiques Roadshow: Baton Rouge, LA		Secrets Of Althorp		Charlie Rose	
21 Fri	Washington Week	Economic Outlook	Great Performances: Sting, The Last Ship			A. M. Stern	Charlie Rose	
22 Sat	Antiques Roadshow: Baton Rouge, LA		Keeping Up Appearances	Keeping Up Appearances	As Time Goes By	As Time Goes By	Globe Trekker Food Hour: China	
23 Sun	Downton Abbey. Pt. 7		Downton Abbey. Pt. 8				Downton Abbey, Pt. 7	
24 Mon	Antiques Roadshow: Baton Rouge, LA		Antiques Roadshow: Pittsburgh, PA		The March		Charlie Rose	
25 Tue	American Experience: Triangle Fire		Frontline				Charlie Rose	
26 Wed	Nature: Ireland's Wild River		NOVA: Ground Zero Supertower		Super Skyscrapers: Billionaire Building		Charlie Rose	
27 Thu	Ask An Expert		Antiques Roadshow: Baton Rouge, LA		Secrets Of Henry VIII Palaces		Charlie Rose	
28 Fri	Washington Week	Economic Outlook	Jazz Roots: Jazz And The Philharmonic			I Create	Charlie Rose	

PRIMETIME – (34.2)

FEBRUARY



	8:00 pm	8:30 pm	9:00 pm	9:30 pm	10:00 pm	10:30 pm	11:00 pm	11:30 pm
1 Sat	American Experience: The Amish Shunned				Hawking		Austin City Limits	
2 Sun	Downton Abbey, Pt. 4		Downton Abbey, Pt. 5		Masterpiece Mystery! Sherlock, Season 3: His Last Vow			
3 Mon	Exp. Michiana	Dinner & A Book	Antiques Roadshow: Eugene, OR		POV: American Promise			
4 Tue	Exp. Michiana	Start Up	American Experience: The Amish Shunned					Frontline: League Of Denial, Pt. 3
5 Wed	Exp. Michiana	Outdoor Elements	NOVA: Roman Catacomb Mystery		Super Skyscrapers: One Trade Center		Charlie Rose	
6 Thu	Exp. Michiana	Just Seen It	Masterpiece Mystery! Sherlock, Season 3: His Last Vow					Charlie Rose
7 Fri	Exp. Michiana	Charlie Rose	American Masters: Alice Walker, Beauty In Truth			POV: Listening Is An Act Of Love	Charlie Rose	
8 Sat	American Experience: The Amish Shunned				Nazi Mega Weapons: Supertanks		Charlie Rose	
9 Sun	Downton Abbey, Pt. 5		Downton Abbey, Pt. 6		The Making Of A Lady		Austin City Limits	
10 Mon	Exp. Michiana	Dinner & A Book	Antiques Roadshow: Eugene, OR		Spies of Mississippi		Charlie Rose	
11 Tue	Exp. Michiana	Start Up	Butch Cassidy & The Sundance Kid		Frontline		Charlie Rose	
12 Wed	Exp. Michiana	Outdoor Elements	NOVA: Great Cathedral Mystery		Super Skyscrapers: Building The Future		Charlie Rose	
13 Thu	Exp. Michiana	Just Seen It	Chasing Shackleton		Antiques Roadshow: Detroit, MI		Charlie Rose	
14 Fri	Exp. Michiana	Charlie Rose	Great Performances: National Theatre 50 Years On Stage					Charlie Rose
15 Sat	Great Performances: National Theatre 50 Years On Stage				Billy The Kid		Austin City Limits: Kacey Musgrave	
16 Sun	Downton Abbey, Pt. 6		Downton Abbey, Pt. 7		Murder On The Homefront		Austin City Limits	
17 Mon	Exp. Michiana	Dinner & A Book	Antiques Roadshow: Pittsburgh, PA		Independent Lens: Las Marthas		Charlie Rose	
18 Tue	Exp. Michiana	Start Up	Rise And Fall Of Penn Station		Frontline		Charlie Rose	
19 Wed	Exp. Michiana	Outdoor Elements	NOVA: Mystery Of Easter Island		Super Skyscrapers: The Vertical City		Charlie Rose	
20 Thu	Exp. Michiana	Just Seen It	Chasing Shackleton		Antiques Roadshow: Baton Rouge, LA		Charlie Rose	
21 Fri	Exp. Michiana	Charlie Rose	Great Performances: Sting, The Last Ship			A. M. Stern	Charlie Rose	
22 Sat	Great Performances: Sting, The Last Ship					Austin City Limits	Austin City Limits: Arcade Fire	
23 Sun	Downton Abbey, Pt. 7		Downton Abbey, Pt. 8					Austin City Limits: Radiohead
24 Mon	Exp. Michiana	Dinner & A Book	Antiques Roadshow: Pittsburgh, PA		Sled Hockey		Charlie Rose	
25 Tue	Exp. Michiana	Start Up	Frontline					Charlie Rose
26 Wed	Exp. Michiana	Outdoor Elements	NOVA: Ground Zero Supertower		Super Skyscrapers: Billionaire Building		Charlie Rose	
27 Thu	Exp. Michiana	Just Seen It	Chasing Shackleton		Antiques Roadshow: Baton Rouge, LA		Charlie Rose	
28 Fri	Exp. Michiana	Charlie Rose	Jazz Roots: Jazz And The Philharmonic			I Create	Charlie Rose	

WEEKDAYS-JANUARY/FEBRUARY

34.1

6:00 am	Body Electric
6:30 am	Martha Speaks
7:00 am	Arthur
7:30 am	Wild Kratts
8:00 am	Curious George
8:30 am	The Cat in the Hat
9:00 am	Peg + Cat
9:30 am	Dinosaur Train
10:00 am	Sesame Street
11:00 am	Daniel Tiger's Neighborhood
11:30 am	Super WHY!
Noon	Sid The Science Kid
12:30 pm	Thomas & Friends
1:00 pm	Dinosaur Train
1:30 pm	Caillou
2:00 pm	Peg + Cat
2:30 pm	Martha Speaks
3:00 pm	Word Girl
3:30 pm	Cat In The Hat
4:00 pm	Curious George
4:30 pm	Arthur
5:00 pm	Wild Kratts
5:30 pm	BBC World News America
6:00 pm	PBS Newshour
7:00 pm	Experience Michiana
7:30 pm	Rick Steves' Europe/ Big Questions (Th Only)



34.2

6:00 am	Sit and Be Fit				
6:30 am	Classical Stretch				
7:00 am	Arthur				
7:30 am	Wild Kratts				
8:00 am	Curious George				
8:30 am	The Cat in the Hat Knows A Lot about That!				
9:00 am	Peg + Cat				
9:30 am	Dinosaur Train				
10:00 am	Sesame Street				
11:00 am	Daniel Tiger's Neighborhood				
11:30 am	Super Why!				
Noon	Rick Steves' Europe				
12:30 pm	Mon-Family Travels	Tues-Built To Last	Wed-Under the Radar	Thu-Ciao Italia	Fri-Just Seen It
1:00 pm	Mon-Globe Trekker	Tues-This Old House Hour	Wed-History Detective	Thu-Chef's Life	Fri-On Story
1:30 pm				Thu-Eat, Drink, Italy	Fri-Well Read
2:00 pm	Mon-Aviators	Tues-American Woodshop	Wed-Best of Painting	Thu-Growing a Greener	Fri-Austin City Limits
2:30 pm	Mon-This American Land	Tues-Woodsmith Shop	Wed-Jerry Yarnell	Thu-John Besh Family	
3:00 pm	Mon-Politically Speaking	Tues-Rough Cut	Wed-Painting with Paulson	Thu-Cook's Country	Fri-Ask an Expert
3:30 pm		Tues-Economic Outlook	Wed-Jerry Yarnell	Thu-America's Test Kitchen	
4:00 pm	Mon-Inside IN Business	Tues-Indiana Lawmakers	Wed-Weekly Special	Thu-Indiana Expedition	Fri-IN Week in Review
4:30 pm		Tues-IN Week in Review	Wed-Made in Indiana		Fri-Indiana Lawmakers
5:00 pm	Mon-IN Week in Review	Tues-IN Courts	Wed-Preserving Heritage	Thu-IN Week in Review	Fri-Preserving Heritage
5:30 pm	Mon-Indiana Lawmakers	Tues-IN Courts	Wed-Preserving Heritage	Thu-Built to Last	Fri-Preserving Heritage
6:00 pm	Mon-Hoosier Craftsman	Tue-The Weekly Special	Wed-IN Expeditions	Thu-The Weekly Special	Fri-Savour Indiana
6:30 pm	Nightly Business Report				
7:00 pm	PBS NewsHour				



WEEKENDS – JANUARY/FEBRUARY



	SATURDAYS	SUNDAYS		SATURDAYS	SUNDAYS
6:00 am	Michigan Out-of-Doors	Curious George	6:00 am	Barney & Friends	Sesame Street
6:30 am	The Best of Joy of Painting	The Cat in the Hat	6:30 am	Angelina Ballerina	
7:00 am	Quilting Arts	Peg + Cat	7:00 am	Curious George	Curious George
7:30 am	Fons & Porter	Dinosaur Train	7:30 am	The Cat in the Hat	The Cat in the Hat
8:00 am	Sewing With Nancy	Cyberchase	8:00 am	Peg + Cat	Peg + Cat
8:30 am	Sew It All	Biz Kids	8:30 am	Dinosaur Train	Dinosaur Train
9:00 am	Martha's Sewing Room	Outdoor Elements	9:00 am	Daniel Tiger's Neighborhood	Daniel Tiger's Neighborhood
9:30 am	Knitting Daily	Indiana Lawmakers	9:30 am	Super Why!	Super WHY!
10:00 am	Lidia's Kitchen	INside Indiana Business	10:00 am	Thomas & Friends	Sid The Science Kid
10:30 am	Dinner & A Book		10:30 am	Bob the Builder	Wild Kratts
11:00 am	Cook's Country	Off the Record	11:00 am	This Old House Hour	Arthur
11:30 am	America's Test Kitchen	Indiana Week in Review	11:30 am	This Old House Hour	Martha Speaks
Noon	Martha Stewart's Cooking	Washington Week	Noon	Baking with Julia	Word Girl
12:30 pm	Martha Bakes	Economic Outlook	12:30 pm	Victory Garden	Electric Company
1:00 pm	Victory Garden	McLaughlin Group	1:00 pm	This Old House	Cyberchase
1:30 pm	P. Allen Smith's Garden Home	Big Questions	1:30 pm	This Old House	Washington Week
2:00 pm	This Old House	Politically Speaking	2:00 pm	Ask This Old House	Charlie Rose
2:30 pm	Hometime		2:30 pm	Hometime	To The Contrary
3:00 pm	Woodsmith's Shop	VP	3:00 pm	Woodwright's Shop	Moyers and Company
3:30 pm	Woodwright's Shop		3:30 pm	MotorWeek	Ask This Old House
4:00 pm	Market Warriors	VP	4:00 pm	M. Stewart's Cooking/ Baking	VP
5:00 pm	PBS NewsHour Weekend	VP	5:00 pm	History Detectives	NOVA
6:00 pm	Experience Michiana	VP	6:00 pm	PBS Wknd/ Ch. Rose Wknd	PBS NewsHour Weekend
7:00 pm	Lawrence Welk	VP	7:00 pm	Lawrence Welk	Washington Week

JANUARY WEEKEND PLEDGE PROGRAMMING

Saturday, January 25th

7:00am 3 Steps to Incredible Health
 9:00am Brain Change with Dr. Perlmutter
 10:30am Dinner & a Book (not pledged)
 11:00am Heal Yourself: Mind Over Medicine
 12:30pm Burt Bacharach's Best
 2:00pm Healthy Hormones - Brain-Body Fitness
 3:00pm Classical Rewind
 4:30pm Big Band Vocalists (My Music)
 6:30pm Burt Bacharach's Best (My Music)

Sunday, January 26th

3:00pm Classical Rewind (My Music)
 4:30pm Burt Bacharach's Best (My Music)
 6:00pm John Sebastian Presents Folk Rewind



OVERNIGHT PROGRAMS JANUARY



Special pledge programming on 34.2 only shown in purple.

WEDNESDAY 1

Midnight Tavis Smiley/NBR
1:00 am NY Philharmonic
2:30 am Return To D. Abbey
3:00 am From Jesus To Christ
5:00 am Antiques Roadshow

THURSDAY 2

Midnight Tavis Smiley/NBR
1:00 am Great Performances
2:30 am Doomsday Volcanoes
3:30 am Mystery Of Eels
4:30 am NY Philharmonic

FRIDAY 3

Midnight Tavis Smiley/NBR
1:00 am This Old House Hour
2:00 am Sherlock
3:30 am Great Performances
5:00 am Mystery Of Eels

SATURDAY 4

Midnight Joe Bonamassa
1:30 am Eat/Cook Healthy
3:00 am Pa's Fiddle
4:30 am Heal Yourself

SUNDAY 5

Midnight Mystery Of Eels
1:00 am Doomsday Volcanoes
2:00 am Independent Lens
3:30 am NY Philharmonic
5:00 am Washington Week
5:30 am Charlie Rose

MONDAY 6

Midnight Highclere Castle
1:00 am Downton Abbey Pt. 1
3:00 am Carol Burnett
5:00 am Antiques Roadshow

TUESDAY 7

Midnight Tavis Smiley/NBR
1:00 am Antiques Roadshow
2:00 am Antiques Roadshow
3:00 am Highclere Castle
4:00 am Downton Abbey Pt. 1

WEDNESDAY 8

Midnight Tavis Smiley/NBR
1:00 am Poisoner's Handbook
3:00 am Frontline
4:00 am The Invisible War
5:30 am Sky Island

THURSDAY 9

Midnight Pa's Fiddle
1:30 am Heal Yourself
3:00 am Joe Bonamassa
4:30 am Eat/Cook Healthy

FRIDAY 10

Midnight Tavis Smiley/NBR
1:00 am This Old House Hour
2:00 am Sherlock
3:30 am Ribbon Of Sand
4:00 am Leg. White Stallions
5:00 am Alien Planets Revealed

SATURDAY 11

Midnight Tavis Smiley/NBR
1:00 am Washington Week
1:30 am Charlie Rose
2:00 am Richard Tucker Opera
4:00 am Chasing Shackleton Pt 1
5:00 am This Old House Hour

SUNDAY 12

Midnight Leg. White Stallions
1:00 am Alien Planets Revealed
2:00 am Frontline
3:00 am The Invisible War
4:30 am Sky Island
5:00 am Washington Week
5:30 am Charlie Rose

MONDAY 13

Midnight Richard Tucker Opera
2:00 am Downton Abbey Pt. 2
3:00 am Unlocking Sherlock
4:30 am Richard Tucker Opera

TUESDAY 14

Midnight Heal Yourself
1:30 am Pa's Fiddle
3:00 am Eat/Cook Healthy
4:30 am Joe Bonamassa

WEDNESDAY 15

Midnight Tavis Smiley/NBR
1:00 am Amer. Exp.: 1964
3:00 am Frontline
4:00 am Richard Tucker Opera

THURSDAY 16

Midnight Tavis Smiley/NBR
1:00 am Private Life Of Deer
2:00 am NOVA: Zeppelins
3:00 am Chasing Shackleton Pt 2
4:00 am Amer. Exp.: 1964

FRIDAY 17

Midnight Joe Bonamassa
1:30 am Pa's Fiddle
3:00 am Heal Yourself
4:30 am Eat/Cook Healthy

SATURDAY 18

Midnight Tavis Smiley/NBR
1:00 am Washington Week
1:30 am Charlie Rose
2:00 am Eugene Onegin
5:00 am This Old House Hour

SUNDAY 19

Midnight Private Life Of Deer
1:00 am NOVA: Zeppelins
2:00 am Frontline
3:00 am Antiques Roadshow
4:00 am Antiques Roadshow
5:00 am Washington Week
5:30 am Charlie Rose

MONDAY 20

Midnight Downton Abbey Pt. 2
1:00 am Downton Abbey Pt. 3
2:00 am Downton Abbey Pt. 3
3:00 am Sherlock
5:00 am Chasing Shackleton Pt 2

TUESDAY 21

Midnight Eat/Cook Healthy
1:30 am Joe Bonamassa
3:00 am Pa's Fiddle
4:30 am Heal Yourself

WEDNESDAY 22

Midnight Tavis Smiley/NBR
1:00 am War Letters
2:00 am Salinger
4:30 am Sky Island
5:00 am Antiques Roadshow

THURSDAY 23

Midnight Tavis Smiley/NBR
1:00 am Meet The Coywolf
2:00 am Rise Of The Drones
3:00 am Chasing Shackleton Pt 3
4:00 am Blood Brother
5:30 am Ribbon Of Sand

FRIDAY 24

Midnight Tavis Smiley/NBR
1:00 am This Old House Hour
2:00 am Salinger
4:30 am Ribbon Of Sand
5:00 am Meet The Coywolf

SATURDAY 25

Midnight Tavis Smiley/NBR
1:00 am Washington Week
1:30 am Charlie Rose
2:00 am TBA
3:00 am Music Makes A City
4:00 am The Rise Of The Drones
5:00 am This Old House Hour

SUNDAY 26

1:30 am Burt Bacharach
3:00 am Folk Rewind
5:00 am Healthy Hormones

MONDAY 27

Midnight Downton Abbey Pt. 3
1:00 am Downton Abbey Pt. 4
2:00 am Downton Abbey Pt. 4
3:00 am Sherlock
5:00 am Music Makes A City

TUESDAY 28

Midnight Tavis Smiley/NBR
1:00 am Antiques Roadshow
2:00 am Downton Abbey Pt. 3
3:00 am Downton Abbey Pt. 4
4:00 am Sherlock

WEDNESDAY 29

Midnight Tavis Smiley/NBR
1:00 am The Amish
3:00 am Frontline
4:00 am The State Of Arizona
5:30 am Sky Island

THURSDAY 30

Midnight Heal Yourself
1:30 am Pa's Fiddle
3:00 am Joe Bonamassa
4:30 am Eat/Cook Healthy

FRIDAY 31

Midnight Tavis Smiley/NBR
1:00 am This Old House Hour
2:00 am The Amish
4:00 am The Funkiest Monkeys
5:00 am NOVA: Murdered Kings

NBR = Nightly Business Report



OVERNIGHT PROGRAMS FEBRUARY



Special pledge programming on 34.2 only shown in purple.

SATURDAY 1

Midnight Tavis Smiley/NBR
1:00 am Washington Week
1:30 am Charlie Rose
2:00 am Barrymore
3:30 am Michel Graves
4:00 am Hawking
5:00 am This Old House Hour

SUNDAY 2

Midnight Funkiest Monkey
1:00 am Murdered Kings
2:00 am League Of Denial
3:00 am State Of Arizona
4:30 am Sky Island
5:00 am Washington Week
5:30 am Charlie Rose

MONDAY 3

Midnight Big Band Vocalists
2:00 am R. Steves' Travel Skills
4:00 am Easy Yoga For Pain
5:00 am Healthy Hormones

TUESDAY 4

Midnight Tavis Smiley/NBR
1:00 am Antiques Roadshow
2:00 am Downton Abbey
3:00 am Downton Abbey
4:00 am Sherlock Series 1

WEDNESDAY 5

Midnight Tavis Smiley/NBR
1:00 am Nazi Mega Weapons
2:00 am The Amish Shunned
4:00 am POV: Amer. Promise

THURSDAY 6

Midnight Tavis Smiley/NBR
1:00 am Original Duckumentary
2:00 am Roman Catacomb Myst.
3:00 am One World Trade Cntr.
4:00 am Nazi Supertanks
5:00 am Antiques Roadshow

FRIDAY 7

Midnight Tavis Smiley/NBR
1:00 am This Old House Hour
2:00 am Sherlock Series 1
4:00 am The Amish Shunned

SATURDAY 8

Midnight Muddy Waters/R. Stones
1:30 am Big Band Vocalists
3:30 am BrainChange
5:00 am Easy Yoga For Pain

SUNDAY 9

Midnight Original Duckumentary
1:00 am Roman Catacomb Myst.
2:00 am One World Trade Cntr.
3:00 am POV: Amer. Promise
5:00 am Washington Week
5:30 am Charlie Rose

MONDAY 10

Midnight Austin City Limits
12:30 am Highclere Castle
1:30 am Downton Abbey
2:30 am Making Of A Lady
4:00 am Alice Walker

TUESDAY 11

Midnight Tavis Smiley/NBR
1:00 am Antiques Roadshow
2:00 am Downton Abbey
3:00 am Downton Abbey
4:00 am Making Of A Lady

WEDNESDAY 12

Midnight BrainChange
1:30 am R. Steves' Travel Skills
3:30 am Muddy Waters/R. Stones
5:00 am Healthy Hormones

THURSDAY 13

Midnight Tavis Smiley/NBR
1:00 am The Animal House
2:00 am Great Cathedral Myst.
3:00 am Building The Future
4:00 am Billy The Kid
5:00 am B. Cassidy/Sundance

FRIDAY 14

Midnight Tavis Smiley/NBR
1:00 am This Old House Hour
2:00 am Chasing Shackleton
3:00 am B. Cassidy/Sundance
4:00 am The Animal House
5:00 am Great Cathedral Myst.

SATURDAY 15

Midnight Tavis Smiley/NBR
1:00 am Washington Week
1:30 am Charlie Rose
2:00 am National Theatre
4:00 am Chasing Shackleton
5:00 am This Old House Hour

SUNDAY 16

Midnight The Animal House
1:00 am Great Cathedral Myst.
2:00 am Frontline
3:00 am Spies Of Mississippi
4:00 am B. Cassidy/Sundance
5:00 am Washington Week
5:30 am Charlie Rose

MONDAY 17

Midnight Austin City Limits
12:30 am Downton Abbey
1:30 am Downton Abbey
2:30 am Murder On The Home
4:00 am National Theatre

TUESDAY 18

Midnight Tavis Smiley/NBR
1:00 am Antiques Roadshow
2:00 am Downton Abbey
3:00 am Downton Abbey
4:30 am Downton Abbey

WEDNESDAY 19

Midnight Tavis Smiley/NBR
1:00 am Grand Coulee Dam
2:00 am Rise/Fall Penn Station
3:00 am Frontline
4:00 am Las Marthas
5:00 am Antiques Roadshow

THURSDAY 20

Midnight Tavis Smiley/NBR
1:00 am Honey Badgers
2:00 am Mystery Easter Island
3:00 am The Vertical City
4:00 am Grand Coulee Dam
5:00 am Rise/Fall Penn Station

FRIDAY 21

Midnight R. Steves' Travel Skills
2:00 am The British Beat
4:00 am 3 Steps/Incred Health

SATURDAY 22

Midnight Tavis Smiley/NBR
1:00 am Washington Week
1:30 am Charlie Rose
2:00 am Sting: The Last Ship
4:00 am Chasing Shackleton
5:00 am This Old House Hour

SUNDAY 23

Midnight The British Beat
2:00 am 3 Steps/Incred Health
4:00 am R. Steves' Travel Skills

MONDAY 24

Midnight Downton Abbey
1:00 am Downton Abbey
3:00 am Sting: The Last Ship
4:30 am Grand Coulee Dam
5:30 am Architect AM Stern

TUESDAY 25

Midnight Tavis Smiley/NBR
1:00 am Antiques Roadshow
2:00 am Sled Hockey
3:00 am Downton Abbey
4:00 am Downton Abbey

WEDNESDAY 26

Midnight Tavis Smiley/NBR
1:00 am Triangle Fire
2:00 am Frontline
4:00 am Sled Hockey
5:00 am Antiques Roadshow

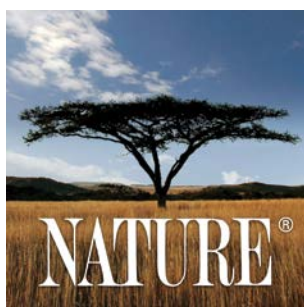
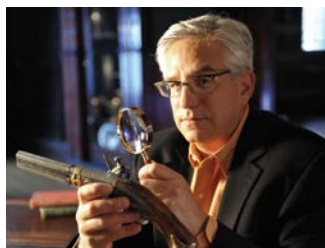
THURSDAY 27

Midnight Tavis Smiley/NBR
1:00 am Ireland's Wild River
2:00 am Gr. Zero Supertower
3:00 am Billionaire Building
4:00 am Triangle Fire
5:00 am Sled Hockey

FRIDAY 28

Midnight Tavis Smiley/NBR
1:00 am This Old House Hour
2:00 am Chasing Shackleton
3:00 am Triangle Fire
4:00 am Ireland's Wild River
5:00 am Gr. Zero Supertower

NBR = Nightly Business Report



American
MASTERS



PRODUCTION NEWS

David Gundlach's "Gift" Unwrapped This Spring

In the coming months, WNIT will tell the story of a man who has become, almost overnight, one of the greatest "game changers" this community has ever known. Staying true to the "Gift" and not the "Giver" is how Gundlach, who passed away in 2011, would want to be remembered.

WNIT proposes to tell David's story through the eyes of people who knew and worked with him. Through interviews we'll learn about his years living in Elkhart County. We'll learn about Gundlach's move to England as a young man, where he amassed a great fortune through his insurance company, Hastings Direct. We'll even get insights on his management style, his interests and his brilliant marketing decisions.

Interwoven throughout the entire documentary of David's life, we'll meet the people and organizations that have benefitted from his vast wealth. This is exactly what David Gundlach wanted. The documentary will focus on what his wealth means and the positive impact he will have on our community for years to come.

Watch for "David Gundlach: The Gift" in late April or early May on WNIT.

Program Continues to Ask *Big Questions*

Produced by DePaul University's Institute for Business and Professional Ethics, *Big Questions* returns to WNIT for four episodes airing on Thursdays and Sundays in January:

"Wage Theft" – January 9, 7:30pm and January 12, 1:30pm

"The Children of Syria" – January 16, 7:30pm and January 19, 1:30pm

"Corporate Responsibility" – January 23, 7:30pm and January 26, 1:30pm

"Indigenous Rights" – January 30, 7:30pm and February 2, 1:30pm

Co-host Kim Clark says, "Big Questions is a show that asks the simple question: 'What can one person do to change the world for good, no matter what their income is, or what their education level is?' Join us as we attempt to change the world every day. You will be surprised at the hope and joy which comes from trying to help others."

Producer Brenda Bowyer adds, "I'm thrilled to be working on a program about ethics and poverty. It is so in line with the mission of public television. To make programs that start a bigger conversation of impact is a small way to make a difference in our community."



Turn your car into programs you love on WNIT

Is it time to bid farewell to your beloved car? Let it do a final good deed, by turning it into your favorite programs on WNIT.

Donate your vehicle, and we'll use the proceeds to support your favorite programs like "Sesame Street", "Antiques Roadshow", and "Downton Abbey" as well as local programs like "Ask An Expert" and "Experience Michiana".

It takes just a few minutes. You get free towing, a tax deduction, and the great feeling that comes from doing something to support WNIT!

What could be better?



TO DONATE YOUR VEHICLE GO TO WNIT.ORG
OR CALL 855-777-8288

PRODUCTION NEWS

Kirkwood, Martin Return for 13th Seasons

Outdoor Elements begins its 13th season on January 20. Host Evie Kirkwood, director of St. Joseph County Parks, says: "What I enjoy about *Outdoor Elements* is that I always learn something new, such as the architectural features of historic barns, or the unique ways plants attract pollinating insects. There are so many natural wonders to showcase in our area!"

Dinner and a Book also opens its 13th season in January. This season, Gail Martin focuses on some of the top 100 books of 2012-13, including Dan Brown's *Inferno* with guest Linda Lucchesi, *Lady Almina, the Real Duchess of Downton Abbey* by Lady Fiona Carnarvon with Tuck Langland, and *Lean In* by Sheryl Sandberg with Alice Martin. Additional guests include Kathy Freese, Mike Keen, Marshall King, Angel Hernandez, Laura Horst and Gabrielle Robinson. March features *Killer Angels* by Michael Shaara with guest Doug Farmwald.

The new season begins January 4 at 10:30 am with Emma Wynn and *The Unlikely Pilgrimage of Harold Frye* by Rachel Joyce. Special thanks to the Rex and Alice A. Martin Foundation for underwriting all 13 seasons!

In addition to the season launch of these two venerable programs, the popular program *Politically Speaking*, with host Elizabeth Bennion, returns to WNIT from hiatus on January 12.



Catch 'Radio Gordy' on 95.3 FM

Listen to 95.3 FM – Michiana's News Channel – every Thursday morning at 8:40am as WNIT's Gordy Young, host of *Experience Michiana* previews local area events and highlights upcoming PBS programming. Mark McGill serves as the host of *Michiana's Morning News*.

Rising Star Bigger/Better for Sophomore Season

In early August, *Michiana's Rising Star* crowned its first champion in Dara Maquez among a field of over 120 contestants. For 2014, WNIT Vice President of Production Angel Hernandez promises to eclipse the show's impressive debut. "Last year was fantastic," said Hernandez. "WNIT was so proud to provide so many talented folks from our communities the opportunity to perform and show their stuff. This year will be even bigger, with even more performances, new wrinkles to the format and a lot of talented people competing for your votes. The Stars will soon be aligning and we can't wait to see who becomes the next Rising Star!"

Stay tuned for entry details which should be forthcoming soon.

Excellence in Early Childhood Education

Enrollment Open to the Public

Children ages 3-5, offering preschool
and child care schedules

**Early Childhood Development Center
at Saint Mary's College**



NAEYC Accredited –
Promoting Excellence
in Early Childhood
Education



Early Childhood Development Center

For information please call:

574-284-4693

or online at: www.nd.edu/~ecdncd

ROOMS

**Great Rooms
Bathrooms
Kitchens**



574-289-4992

www.peacockandco.com

**1147 Mishawaka Avenue
South Bend, IN**

The Center at Donaldson — Experiencing the Unexpected



Poor Handmaids of Jesus Christ



Partners in the work of the Spirit

www.TheCenterAtDonaldson.org

Sponsored by the Poor Handmaids of Jesus Christ

At The Center at Donaldson you can...

pray, attend college classes, retire to an independent living apartment, receive long-term nursing care or short-term rehabilitation, learn to care for the earth, participate in a retreat or conference, learn to weave or create with clay AND buy natural beef.

The Center at Donaldson, formerly known as the Poor Handmaids of Jesus Christ Ministry Center, offers all of this and more. The Center is an Intergenerational Living and Learning Center, a place for people of all ages and faiths to interact, share, learn and grow together.



**Ancilla Beef &
Grain Farm**



Ancilla College



**Catherine Kasper
Life Center**



Earthworks



**Lindenwood Retreat
& Conference Center**



MoonTree Studios



The Center at Donaldson • P.O. Box 1; 9601 Union Rd. • Donaldson, Indiana 46513 • (574) 936-9936

Aladdin's eatery



317 W. University Drive
Mishawaka, IN 46545
(574) 272-2227
Fax (574) 272-2260



Come dine in with us
or place an order for carryout!

We also offer delivery
through Dine-In Delivery Service



**25%
OFF**

\$20.00 or more
Excludes alcohol, tax, or gratuity.
Expires 03/31/13



**FREE
APPETIZER**

Excludes
Vegetarian
Combo
Expires 03/31/13



**FREE
SMOOTHIE
OR
FRESH SQUEEZED
JUICE**

with any entree purchase
Expires 03/31/13

FOREVER LEARNING INSTITUTE

OFFERING OVER 80 CLASSES TO IMPROVE OLDER
ADULT LIFE(50+) THROUGH INTELLECTUAL
CHALLENGE, SPIRITUAL REFLECTION AND SOCIAL
INTERACTION.



Registration is
February 19, 20, 25

SEMESTERS BEGIN IN MARCH AND SEPTEMBER

FOR MORE INFORMATION:

www.foreverlearninginstitute.org
director@foreverlearninginstitute.org
(574) 282-1901

STRONGER EVERY DAY



**1005 Hickory Road
South Bend, IN 46615
(574) 233-5754**

**Monday - Thursday
7:00 am-8:00 pm**

**Friday
7:00 am-5:00 pm**

Mcdonaldpt.com

MEMBERSHIP CORNER

Thank You!

Thank you to everyone who supported WNIT during our Winter Membership Campaign! A big *thank you* is also extended to the following individuals, groups and businesses for volunteering their time and donating food and beverages during the campaign. Be sure to say *thank you* the next time you visit one of the following businesses.

A Plus Auto Service, Grape Road, Mishawaka

Kiwanis Club of South Bend

*Honkers Restaurant and Expert Catering,
South Bend and Mishawaka*

Frankie's BBQ, South Bend and Mishawaka

Friends of WNIT

Thank You Gifts

If you requested a thank-you gift with your membership contribution, you can expect it to arrive four to six weeks after we process your payment. If you have a question or inquiry about your thank you gift, please send an email to cmccraner@wnit.org or jschloss@wnit.org with *Thank You Gift* in the subject line, or call 574-675-9648.

2013 Tax Receipts

Gifts to WNIT are tax deductible to the extent permitted by law. Your gift is deductible for the amount of the pledge minus the fair market value of any thank you gift you might receive. The fair market value of any thank you gift will be listed on your annual tax receipt. Tax receipts are mailed every January. Please retain this receipt for tax purposes. Consult with your tax advisor for more information.

Members Only Ticket Offers

Provide your email address to WNIT and you'll have multiple opportunities throughout the year to win complimentary tickets to performances throughout the Michiana region. This past year, WNIT members enjoyed complimentary tickets to area performances, including the Elkhart Jazz Festival, the Southwest Michigan Symphony Orchestra-Northern Lights, and *An Unnecessary Farce*, among others. Members also received an email invitation to a private performance of *All Shook Up* at the historical Bristol Opera House this past summer as our way of saying thank you for supporting WNIT. If you are an active member of WNIT and would like the opportunity to receive complimentary ticket offers please provide your email address to Joanne Schloss at jschloss@wnit.org and let her know you would like to be on the email distribution list.

WNIT BOX OFFICE



WNIT Welcomes The Texas Tenors!

The Texas Tenors are coming back to Michiana on Saturday, August 23, 2014, and WNIT has your opportunity to get prime seating tickets for their concert at the Shippshewana Event Center in Shippshewana, Indiana. Come and experience the talents of Marcus, JC and John as they smoothly blend country, classical, gospel and Broadway with a dedicated touch of humor and charm. For more info or to get tickets now, call 574-675-9648 or visit to wnit.org.

Enroll Your Kids or Grandkids in WNIT Kids Club

Each child or grandchild enrolled will receive:

- A WNIT Kids Club backpack with a variety of PBS® children's activity sheets as well as an age-appropriate book from Better World Books
- A welcome folder for parents with information, references and ideas to help children learn and grow
- A one-year subscription to the Planner, WNIT's bimonthly program guide
- WNIT's monthly e-Newsletter
- Email notification of free or discounted ticket offers for area adult and children's performances
- A coupon for a complimentary 8" personal pizza from Papa John's

For their birthday, each child or grandchild will receive:

- A special on-air birthday greeting during their birthday month
- A birthday postcard
- An age-appropriate book from Better World Books
- A coupon for a free 8" single layer cake from Dainty Maid Bake Shop

WNIT Kids Club members and their families also get free entrance to the annual WNIT Kids Day in the Park held during the summer at an area park facility. Families can enjoy fun-filled games and activities and children can have their photo taken with a PBS children's personality such as Clifford, The Cat in the Hat, Buddy from Dinosaur Train or others.

Adults supporting WNIT at \$50 per year can enroll kids or grandkids in WNIT Kids Club. Those joining at \$75 and above will also receive the WNIT MemberCard offering 2-for-1 discounts at area restaurants, museums, attractions, online stores and shopping. All renewing WNIT Kids Club members receive a book from Better World Books and a coupon for a personal pizza from Papa John's.

To enroll call the Membership Team at 574-675-9648, x311 or go to wnit.org.

wnit
kids club

HAPPY BIRTHDAY TO WNIT KIDS CLUB MEMBERS!

NAME	AGE	NAME	AGE
Avery Bellinger	4	Mary Meacham	8
Eden Blakemore	9	Justin Meacham	7
Lex Budka	6	Alice Morris	7
Deacon Budka	4	Alice Morrison	8
Erin Farmwald	11	Lia Schrock	5
Henry Hire	2	Elizabeth Slott	2
Daisy Kramer	7	Lily Teska	12
Gwyneth Lannon	9	Michael Thomas	12
Katie Maher	5		

"I want to

make my community
a better place by
giving back."

Alice Sparks believes that PBS is a vital part of her life and her community. That's why she's included her PBS station in her will. If you are planning to include charitable interests in your plan, please consider making WNIT part of your lasting legacy.



Find out how you can plan a gift

Contact Joanne Schloss at 574.675.9648 ext. 311 or jschloss@wnit.org



Join or Renew Today!

Already Support WNIT? Refer a Friend!

Please mail this form with your gift to: **WNIT Public Television**, P.O. Box 7034, South Bend, Indiana 46634

Or join online at WNIT.org

Questions? Call us at 574.675.9648

☒ **Yes, I would like to support WNIT!**

Name _____

Address _____

City/State/Zip _____

Phone _____

E-mail _____

Please select annual membership level:

☐ \$35 WNIT Senior Member

☐ \$50 WNIT Member

☐ \$75 WNIT MemberCard

☐ Other \$ _____

Payment Method:

Please charge my:

☐ VISA ☐ MasterCard

☐ Discover ☐ American Express

Card # _____

Expires _____

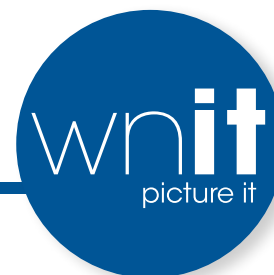
Signature _____

☐ My Check is enclosed, payable to WNIT Public Television

☐ **I want to be a WNIT Sustainer Member:**

As a WNIT Sustainer, your ongoing monthly gift will continue until you tell us to stop. Credit and debit charges will be made on the 15th of each month. Your membership will automatically renew annually and benefits will continue without interruption.

HONOR ROLL MEMBERS



WNIT would like to recognize the following Honor Roll Members for their continued support!

25 YEARS

Marilyn and Michael Arney
Thomas and Martha Athanas
Mr. and Mrs. Steven Austin
Phyllis Bower
Richard and June Bunton
Evelyn M. Carlson
Stanley Disher
John Foegley
Roland and Carol D. Fox
Patricia and John K. Frazier
M. Joann Frederick
Paul and Robbie Grimstad
Mrs. Barbara Guy
Carolyn and Joel Hach
Mr. and Mrs. Edward Harrison
Margaret and John Ingold
Cynthia and David Janzen
Mr. and Mrs. Craig Kapson
Barbara and Edward Kolm
Mr. and Mrs. Wendell Litwiller
Charles Lorenz
Shari and D. Thomas Mellin
Mr. Max Mertz
Leone and Anthony Michel
John A. Pagin
Karen and Paul Pugh
Mr. and Mrs. Andrew Robb Jr.
Nina Sanders
Dorothy Scheetz
Dale Simpson
Lester and Diane Skibbe
Mr. and Mrs. Robert Smith
Eve Sobol
Gawain and Wanda Stewart
Mr. and Mrs. Loren Van Oort
Ms. S. Babbette Waks
Mr. Al Weaver
Evelyn and James Whitehead
Robert L. and Dorothy L. Yoder

20 YEARS

Don and Sharon Balka
Willodean Beckwith
Vernon and Barbara Dudley
Martha M. Elkin
Connie Fields
Robert and Irma Fox

Dianne and Don Frandsen
Richard Gschwind
Mary Ellen Handwork
Mark and Vonna Holderread
Mr. Gary Holmes
Patricia and Richard Jensen
Lyle B. and Catherine Kuhmichel
Elizabeth and Gene Lightner
Ann Maesaka
Leslie McGregor
Mr. Joseph Mitchell
David and Deborah Musser
Betty Phillips
Marvene and H. Lamar Pippenger
Ms. Adell Radecki
Candie Riddle
Marlin Schmidt
Linda Stright
Gene and Ann Stutsman
Joan G. Walker
Arletta Wright

15 YEARS

Beverly and Peri Arnold
John H. and Janet .E Berg
Jay D. Bowers Jr.
Linda Cary
Mr. and Mrs. Paul Crowley
Rita Daugherty
Mikki Dobski Shidler
Mary Ann Elliott
Brenda and Doug Farmwald
Ann File
Dr. and Mrs. Michael Freid
Judy and Denny Gill
Jack and Lydia Gould
Marilyn Kalamaros
Martin Kerwin
Barbara and Donald Kindt
Stephen and Margaret Luecke
Phil McCarter
Collin and Rose Meissner
George and Olga Nazaroff
Craig Phillips
Mrs. Coletta Quinn
Bud Raab
Sue Ann Riley
Brenda Searfoss
Ann Trojanowski

Mary Tulchinsky
Margaret Weybright
Mr. and Mrs. Marvin Woolett

10 YEARS

Ranella and Larry Arnett
Richard and Cheryl Brunjes
Carol Burgess
Kathleen Caywood
John Clayton
Robert and Ann Cope
Mr. and Mrs. William Copp
James Dugle
Robert and Janene Edwards
Dr. Mary Frandsen
Gordon Gilger
Rennick Grass
Brian Hoover
Rhonda Jackson
Laura Kaufherr
Patricia and Glenn Killoren
Marilyn E. Kuskye
Mr. Fred Lighthall
Bill and Karen McDonald
Mr. Joseph Molnar
Roger Morris
Carol Roberts
Jean Roumell
Ms. Patricia Sloan
R. M. Timby
John Voorde
Howard Wallace
Jack and Nila Waterson

5 YEARS

Patricia Austin
Terry and Mary Sue Austin
Brent Banulis
Jim and Marilyn Bellis
Gertrude Berndt
Amy and Dan Bladow
Joyce Boaler
Frances Buck
Christine Cloud
Jenica Cory
John Dampeer
Mr. and Mrs. H. Graham Dingman
May Edington

Margaret Everingham
Mr. and Mrs. Gunnar Fog
George Frederick
Charles Garasic
Velma Harris
Mrs. Bonnie Hartline
Robert Hartman
Judy Jerome
Ron and Beryl Johnson
Robert Johnston
Brian and Kristi Kubicki
Mary Liechty
Mary Ellen Maenhout
Sue Messaglia
John Migas
Darlene Miller
Karen Moll
Nick and Cherie Nannfeldt
James O'Brien
Karen O'Shea
Anne Petelle
Lora and Ed Pinder
Sue and Curt Plummer
Doug and Sharon Risser
Pat Robertson
Harry Rose
David Rowley
Marcia Sheridan
Homer and Nancy Sideris
Ruth Skeel
Grace E. Smeltzer
Ms. Linda Stayton
Kathryn Suppinger
Laura Jane Swanson
Pat and James Taylor
Mary Jo Tompos
Joyce Trygg
Walter and Jane Ward
Margaret Weber
Sofia Werner

WNIT SUPPORTERS

1st Source Bank Antiques Roadshow BBC World News Holiday Programming Inside Indiana Business Masterpiece: Downton Abbey McLaughlin Group NOVA PBS NewsHour 32 Pearls Family Dentistry Children's Programming Miscellaneous Prime Time Alick's Home Medical Antiques Roadshow Lawrence Welk Aladdin's Eatery Miscellaneous Programming AlphaGraphics State Marching Band Finals Azteca Auto Sales Latino Americans Barnes & Thornburg Business Programming James & Carol Bieneman Children's Programming C 2 Your Health LLC Miscellaneous Programming Caretel Inns of Lakeland Miscellaneous Prime Time Carmela's at Macri's Miscellaneous Programming C.E. LEE Decorating Center Hometime This Old House Center for History Masterpiece: Downton Abbey Center for Hospice Care Antiques Roadshow Masterpiece: Downton Abbey Conservatory of Dance Women's Programming Cosimo & Susie's A Bit of Italy Lidia's Italy in America D & W, Inc. Children's Programming Early Childhood Development Center, Inc. Children's Programming Elkhart Child Development Center Children's Programming Elkhart Civic Theater Miscellaneous Prime Time Elkhart County Symphony Miscellaneous Programming Faegre Baker Daniels LLP PBS NewsHour Family Dental Health Miscellaneous Programming Friends School and Day Care Children's Programming Gene's Camera Store Masterpiece The Gibson Foundation Antiques Roadshow Gibson, Strength Against Risk Antiques Roadshow Steven A. Goldberg, CPA Washington Week Good News! Child Care Children's Programming Goodwill Industries Children's Programming Women's Programming Goshen Antique Mall Antiques Roadshow Goshen College Miscellaneous Prime Time	Greencroft Communities Miscellaneous Programming GreenTown Michiana Miscellaneous Prime Time Growing Kids Learning Centers Children's Programming Gymnastics Michiana Children's Programming Hartzler Gutermuth Inman Funeral Home Masterpiece: Downton Abbey Hearth & Home Home Improvement Programming Heritage Square Children's Programming Homan Lumber Mart Inc. Hometime Hospice Foundation Miscellaneous Programming House of Andala Hometime Miscellaneous Programming This Old House Hovenkamp's Produce Children's Programming Cooking Programming Indiana Community Bank Miscellaneous Programming Indiana Trust & Investment Company Masterpiece: Downton Abbey IU Health Goshen Heart & Vascular Center Miscellaneous Programming Jordan Automotive Miscellaneous Programming Judd Leighton School of Business and Economics Business Programming KC Tree, Inc. Miscellaneous Programming Brian King, DDS Miscellaneous Programming Lake City Bank Inside Indiana Business Lanser's, The Natural Way Daniel Tiger's Neighborhood Sesame Street Lippert Components Children's Programming M. and S. Management Co., Inc. Masterpiece Martin's Super Markets Nature McDonald Physical Therapy & Sports Rehabilitation Center BBC World News Michiana Eye Center Miscellaneous Programming Mid-City Supply Company Hometime Dr. Dane & Mary Louise Miller Foundation History Detectives Inside Indiana Business News Brief Nightly Business Report Mishawaka Furniture Women's Programming Musical Arts Indiana Miscellaneous Programming Northern Box Company Antiques Roadshow Nunemaker's Coin Shop Masterpiece Nyloncraft Masterpiece: Downton Abbey	Pain Management Group Miscellaneous Prime Time Patchwork Dance Company Miscellaneous Programming Peacock & Company Miscellaneous Programming Pfeifer, Morgan & Stesiak Attorneys At Law Austin City Limits Jack Horkheimer: Stargazer Barb & John Phair Miscellaneous Programming Pike Lumber Michigan Out-Of-Doors Pumpkinvine Quilting Fons & Porter Love of Quilting Quilting Arts Dr. Kelly Puster Children's Programming River Bend Hose Motorweek Ruthmere Museum Miscellaneous Prime Time Saint Joseph Regional Medical Center PBS NewsHour Salvation Army / Kroc Center Children's Programming Miscellaneous Prime Time News Programming Sew Creative Threads Sew It All Sewing with Nancy Snite Museum of Art Miscellaneous Prime Time South Bend Career Academy Children's Programming Masterpiece: Downton Abbey South Bend Civic Theatre Miscellaneous Programming South Bend Farmer's Market Miscellaneous Programming South Bend Medical Foundation McLaughlin Group PBS NewsHour South Bend Museum of Art Miscellaneous Prime Time South Bend Symphony Orchestra Miscellaneous Programming South Bend Tribune Miscellaneous Programming Southwest Michigan Symphony Orchestra Miscellaneous Programming Stitch 'N Time Fabrics Quilting Arts Sweeney Julian Trial Attorneys JFK Programming Teachers Credit Union Biz Kids Nightly Business Report The Dental Center Children's Programming The Heritage Museum and Cultural Center Miscellaneous Programming The Lerner Theatre Miscellaneous Programming The Quilting Loft Sew It All Fons & Porter Love of Quilting Quilting Arts Sewing with Nancy The Troyer Group Nightly Business Report PBS NewsHour The Village at Winona History Detectives	Inside Indiana Business News Brief Nightly Business Report Treat's Squire Shop Miscellaneous Programming Tuesley, Hall, Konopa, LLP Inside Indiana Business Masterpiece University of Notre Dame DeBartolo Performing Arts Center Miscellaneous Programming Wagon Wheel Theatre Miscellaneous Prime Time Waterford Crossing Miscellaneous Programming Yellow Rose Florist Children's Programming YMCA of Michiana Miscellaneous Prime Time Zimmer NOVA BUSINESS CLUBS Chairman's Club (\$3,000) Kurt Simon Teachers Credit Union President's Club (\$1,500) Logan Community Resources, Inc. Corporate Club (\$800) Lyons Industries, Inc. South Bend Medical Foundation Business Honor Roll (\$300) Mossberg and Company, Inc. Sylvester & Tessie Kaminski Foundation The Troyer Group KID'S CLUB AND RAISING READERS John Anderson Foundation Better World Books Dainty Maid Bake Shop Papa John's PNC Bank St. Joseph County Parks Kurt Simon Small Smiles of South Bend Sylvester & Tessie Kaminski Foundation University Park Mall YMCA of Michiana LOCAL PRODUCTIONS Ask An Expert Beacon Health System IU Health Goshen Center for Cancer Care South Bend Clinic Dinner & A Book The Rex and Alice A. Martin Foundation Additional Dinner & A Book Supporters Dr. Dane & Mary Louise Miller Foundation The Village at Winona Economic Outlook Ancilla College Bingham & Loughlin, P.C. Lake City Bank St Joseph County Chamber of Commerce The Greater Elkhart Chamber of Commerce Tuesley, Hall, Konopa, LLP Ernestine Raclin: Leading the Way Alick's Home Medical Billie & David Bankoff Barnes & Thornburg Bingham and Loughlin, PC	Jo Ann & Joseph Blazek Tom & Liz Borger Center for History Communication Company of South Bend Tom & Dot Corson Das Dutchman Essenhaus Ann & Fred Dean Arthur J. Decio Robert & Mary Pat Deputy The Faccenda Family Faegre Baker Daniels LLP IOI Interlogic Outsourcing, Inc. Jean & Van Gates Graham-Allen Partners Larry & Janet Hiler IUSB Arts Foundation Board IUSB Ernestine M. Raclin School of the Arts Carol and Craig Kapson Brian & Ginger Lake Leighton-Oare Foundation Lexus of Mishawaka McDonald's Restaurants Connie & Steve McTigue Memorial Hospital of South Bend Panizza Building Corporation Peacock & Company Barb & John Phair Donna Schrock Barry and Cari Shein South Bend Medical Foundation Steel Warehouse Company, LLC Stifel - The Elkhart Group Janet & Larry Thompson Trinity School at Greenlawn Tuesley, Hall, Konopa, LLP University of Notre Dame Experience Michiana Ancilla College Elkhart County Parks Faegre Baker Daniels LLP Florence V. Carroll Charitable Trust Forever Learning Institute KC Tree, Inc. Dr. Dane & Mary Louise Miller Foundation Nyloncraft Pokagon Band of Potawatomi Ruthmere Museum Saint Joseph Regional Medical Center Kurt Simon South Bend Medical Foundation South Bend Tribune The Lerner Theatre The Old Bag Factory The Village at Winona Trinity School at Greenlawn Tuesley, Hall, Konopa, LLP Village at Winona Wagon Wheel Theatre Harbor Lights 1st Source Bank Ace Hardware of Niles John & Elizabeth Allegretti Ken Ankl & Ann Miller Anonymous Hilda & Stephen Banyon Benton Charter Township Berrien Community Foundation (Thieneman) Boulevard Hotel Larry & June Bowman Celebration Cinema Cornerstone Alliance	Ann Dahmer & Kevin Geiser Bob & Cindy Ehrenberg Curtis & Kimberly Eschler Tim Flynn & Dixie Inocenzio Barbara Globensky Harbor Shores of Lake Michigan Honor Credit Union Hopp Family Foundation Horizon Bank Ken & Janet Kleinhample Lakeland Healthcare Lakeland Regional Medical Center Jeanette Leahey Lexus of Mishawaka Lions Club of Benton Harbor New Territory Arts Association Debra Panozzo Barbara J. Peebles Lois Peebles St. Joseph Today Schalon Foundation Joan M. Smith/J. Muller Smith Southwest Michigan Tourist Council Starks Family Funeral Home Thomas Starks Tabor Hill Winery & Restaurant The Charms, Inc. The Sleeping Cat Press United Federal Credit Union Vail Rubber Works David & Barbara Whitwam Michiana's Rising Star ArtsEverywhere Initiative of the Community Foundation of St. Joseph County Crown Trophy Katy & Tim Demarais Graham Allen Partners Harbor Shores of Lake Michigan Lake City Bank Lexus of Mishawaka Nyloncraft Pokagon Band of Potawatomi Kurt Simon South Bend Medical Foundation Wonderland Cinema of Niles, Michigan Outdoor Elements South Bend-Elkhart Audubon Society WoodsToBe Trees Politically Speaking League of Women Voters of Indiana South Bend Medical Foundation Documentary Alick's Home Medical Dr. Leslie Bodnar Halogen Software Harper Cancer Research Institute K & D Custom Coach, Inc. McDonald Physical Therapy Saint Joseph Regional Medical Center PROMOTIONAL SUPPORT Alpha Graphics Duley Press Express Press Mossberg & Company, Inc. Rink Printing
--	--	--	--	--	---

Information correct as of press date. For a full listing of program sponsors, please contact WNIT.

SUPPORTER SPOTLIGHT

IDA REYNOLDS WATSON AND PERRY WATSON

This month the Supporter Spotlight shines its light on Ida Reynolds Watson and Perry Watson. Owners of Lexus of Mishawaka, they have generously shared their many talents with our station. As underwriters of “Michiana’s Rising Star,” “Ernestine Raclin: Leading the Way” and “Harbor Lights,” and members of the WNIT Directors’ Circle, they have supported WNIT with leadership, financial support and counsel.

Ida Reynolds Watson has served on the WNIT Board of Directors since 2007 and is the incoming Chair of the Board. Previously she served as Board Vice Chair, Board Secretary, Chair of the Government Relations Task Force, a member of the Bandwidth Task Force, Chair of the President’s Search Committee and has been involved as a participant in all Governance Committee and Budget, Finance, Audit Committee meetings. In addition, Ida has attended the American Public Television Service’s “Capitol Hill Day” in Washington D.C. and the Indiana Public Broadcasting Stations’ “Sustainability Task Force” as a lay leader.

WNIT happily shines its Supporter Spotlight on these two individuals who are critical to the success of our organization.



DIRECTORS’ CIRCLE

The WNIT Directors’ Circle represents a very dedicated and select group of individuals who, by their commitment, contribute to the total annual support which is the foundation of WNIT’s operating budget. These essential annual contributions make possible the great programs that everyone in Michiana enjoys.



Diamond Level (\$10,000 +)

Arthur J. Decio
Ed and Sue Hilier
Craig D. Sullivan and
Cynthia L. Harris
Jane J. Warner

Platinum Level (\$5,000 +)

Irions Foundation, Inc.
Glenn and Patty Killoren
Ernestine M. Raclin
Welter Foundation

Gold Level (\$2,500 +)

Anonymous (1)
Susan and David Findlay
Margaret and Albert Gutierrez
Susan Kay Hintz
James W. and Sally F. Hubbard
Sara and Abraham Marcus
Chris and Carmi Murphy
Perry and Ida Reynolds Watson III
Ernest and Gerda Zeller

Silver Level (\$1,000 +)

Anonymous (1)
David and Billie Bankoff
Liz and Tom Borger
Barbara K. Clausen
Monali and Promit Das
Jack and Phyllis Davis
Katy and Tim Demarais
Robin and Lisa Douglass
William W. Erwin

Tom and Susan Fischbach
Stephen and Barbara Fredman
Craig and Connie Fulmer
Van, Larry & Bill Gates and
Harry Shaffer Family
Mr. and Mrs. Van E. Gates
Dave and Ginny Gibson
Mary Beth and Greg Giczi
William and Leslie Gittin
Maggie and Steve Goldberg
Dr. Elmer Graber
Katherine Humphreys
Edward M. Jordanich
Najeeb and Nancy Khan
Rebecca and Michael Kubacki
Brian and Ginger Lake
Betty Laramore
Joan and Donald Lyons
Frank and Marsha Martin
Chris Maziar
Nancy McGill in memory
of Irene McGill

V. Richard and Jane Miller
Dr. Laura L. Morris
Susan Ohmer and Donald Crafton
Donna and Mark Richter
The Honorable and Mrs.
James W. Rieckhoff
Judith Robert and Thomas
J. Kapacinskis
Maritza Robles
Steve and Connie Rufenbarger

Pat and Sue Ruszkowski
Mr. and Mrs. William
J. Schmuhi, Jr.
Cari Shein
James F. and Sherry L. Smith
Tom and Joyce Sopko
Perry Stow and Andrea
Mather-Stow
Douglass J. and Anna
M. Thompson
Mike and Dena Wargo
Peggy Weed
Michael and Julie Yates

Bronze Level (\$500 +)

Anonymous (4)
Dottie and Tom Arnold
Stephen and Nancy Ball
Bruce and Linda Bancroft
Stuart and Paula Barb
Brian and Jeannelle Brady
Edward and Carla Chester
Jack and Karen Cittadine
Gary Cornette and Marsha Miller
Marianne Corr
Thomas and Dorthy Corson
Rosemary and Fred Crowe
Ann and Fred Dean
Mary Pat and Robert Deputy
Greg and Mary Downes
Thomas and Elizabeth Eisele
Ken and Mary Eme
Jill and Chris Erb

Irene Eskridge
Fred and Mary Jane Ferlic
Tony Fitts and Ramona Payne
George and Katherine Freese
Jody and Mike Freid
Joan and Gerald H. Frieling, Jr.
Ruth and George Friend
Steven and Susan Funk
Rodney and Carol Ganey
Mr. and Mrs. John Goebel, Jr.
Dr. Paul and Margie Goldwin
Donald and Lynn Groenleer
James R. Hardesty
Janice and Larry D. Harding
Denise and Angel Hernandez
Anne Hillman
Leonard and Joann Isban
Carol and Craig Kapson
James and Christine Kelly
Gretchen and Dean Kimble
Barbara and Donald T. Kindt
Nels Leininger and Gail English
Gunnel B. Lofgren
Jerry and Becky Lutkus
Mr. and Mrs. Philip Lux
Gail and Robert Martin
Rex and Alice Martin
Barbara and Laurence McHugh
Rodney and Dr. Debra McClain
Tom and Shari Mellin
Brad and Mickey Miller

Jeffrey Miller
Pat and Carol Moody
Carol Ann Mooney and
George Efta
Kevin and Anita Morrison
Mary Naquin
Philip and Mary Newbold
Lida Thompson Norris
Barb and John Phair
Michael and Amy Phend
Nicholas and Jennifer Recchio
Dr. Rob and Lee Riley
Fred and Chris Rowe
Judy and Bob Schmuhi
Robert and Jo Anne Sennett
Tom and Maria Slager
Sonja Smith
Carl and Rita Schobert Snyder
Oliver C. Songlingco, M.D., P.C.
Dr. David Taber and
Stephanie Scharf
Paul D. and Mary H. Tipps
Barbara Warner
Phid and Jeff Wells
Dorothy and Dar* Wiekamp
Joseph and Barbara Wind
John and Carolyn Wolf
Nancy C. Yob
Douglas and Janette Yoder
Julia Zahler

**Deceased Charter Director*



WNIT Television Planner
P.O. Box 7034
South Bend, IN 46634-7034

PERIODICAL

Visit us at



Find us on

facebook



SEASON 3
STARTS JANUARY 19, 9PM

SHERLOCK