



PLANNER

Michiana's bi-monthly Guide to WNIT Public Television
Issue No. 3 May - June 2020



24/7
wnit

Our Kids Channel Turns One!



INSPIRE, EDUCATE, UNIFY



Board of Directors

Chairman

Susan Ohmer, Ph.D.

Vice Chairs

Robert G. Douglass

James Hillman

President and General Manager

Greg Giczi

Treasurer

William J. Schmuhl, Jr.

Secretary

Hayley G. Boling

Directors

Jim Arnold

Tania Bengtsson

Marvin Curtis

Joel D. Duthie

Rebecca Espinoza-Kubacki

Mary Horan

Katherine Humphreys

Brian Inniger

Paul Jordan

Trevor Kubatzke

John Lloyd

Christine M. Maziar

Mary Louise Miller

Pat Moody

Mike Pound

Rebecca Stoltzfus, Ph.D.

James M. Summers

Kimberley Bow Sundry

Michael Wargo

Marcus Winchester

Linda Yoder

Charter Directors

Arthur J. Decio

Jerry Hammes

Ernestine M. Raclin

Jane Warner*

Dar Wiekamp*

Honorary Life Director

Carmi Murphy

*Deceased Charter Director

A Message from Greg Giczi

President and GM, WNIT Public Television



Dear WNIT Supporters,

Let me shake your hand. Wish we could! Thank you for your ongoing support of WNIT. Like you, my head is spinning at what our community and country has gone through in the last few months. You would think the *Twilight Zone* was on our program schedule.

I hope the Coronavirus has not touched you or yours. During these past two months, WNIT has been with you with programming to both give you a reprieve from all the virus news yet also offer special programming to allow you to learn even more about the virus crisis. These special programs recognize our situation goes not only to medical issues but to our mental health as we all have been beat-up by worries and anxieties.

WNIT has gone back to its roots these last months. At our core, we are an educational organization. Nearly every program we provide has educational value. When it comes to our programs for children, every one of them has a learning component. With schools closed, kids are learning at home with parents taking a more active role. For all who share an email address, WNIT sends a daily (M-F) e-newsletter highlighting programs of special merit and providing links for additional information and resources.

For example, you have a 4 year old daughter whose preschool has closed. You can find programs appropriate for her age. You've selected *Peg + Cat* which is best for 3-5 years old. You learn that this program's primary learning goal is to develop an "enthusiasm for math." We provide you with viewing options on our 34.1, 34.2, or 34.3 channels. After watching, click on the provided link and find activities you can do with your daughter to reinforce what she learned on the program. I chose a game called "The Big Dog Problem." Peg is supposed to mail 5 letters and you work through the combinations, 4+1, 2+3...you get it! In the end, the "big dog" blocking the mailbox is friendly and helpful!

You can sign up for these e-newsletters on our website, www.wnit.org.

There's more! WNIT has added a temporary channel, 34.5, to further assist with at-home learning. This service, organized by the World channel, features science and history programs from our PBS library with learning links for 6th to 12th graders. This schedule is sent weekly to each school superintendent in our coverage area for distribution to teachers and students.

As every non-profit is, we're concerned for our financial future. I am not going to ask you for "emergency money." But, I'd like to ask you to just *continue* what you have been doing to support us when you normally send us a gift. Thank you.

Stay healthy, enjoy the wealth of program viewing opportunities you'll find in your *WNIT Planner* magazine, and take advantage of the extra at-home education opportunities we are providing. We love you, be safe.

Best wishes,

A handwritten signature in black ink that reads "Greg Giczi". The signature is fluid and cursive.

Greg Giczi
President & General Manager



INSPIRE, EDUCATE, UNIFY



WNIT Day of Giving offers matching funds on May 28

In these uncertain times, the need is even greater, as WNIT strives to continue and expand our services to the region. **We are excited to announce that we have raised \$20,500 in matching funds for the third annual WNIT Day of Giving on May 28, 2020.**

Thanks to generous challenge grants from the Shirley and Jack Appleton Estate, and other “Friends of WNIT,” **all dollars raised will be matched up to \$20,500 on and leading up to this day.**

In addition, the stimulus bill also contains a one-time, above-the-line deduction for cash contributions up to \$300 made to certain qualifying charities. All taxpayers are eligible to take this deduction, even those who use the standard deduction. The incentive applies to contributions made in 2020 and would be claimed on your tax forms next year. The new deduction does not apply to non-cash gifts or gifts from donor advised funds.

With the coronavirus pandemic and need for curriculum-based at-home learning materials, WNIT has risen to the challenge to expand our educational offerings during this critical time. We are only able to do so with the support of our many donors. By joining us during this special opportunity, you will help us reach our challenge and your donation will be doubled!

On May 28, starting at 12:00 a.m. and for the next 24 hours, go to www.wnit.org/dayofgiving and use your credit or debit card to donate to WNIT to help us surpass this \$20,500 challenge. Checks, gifts of stock or securities and other forms of donation may be made up to May 28 by contacting Steve Funk at 574-675-9648 x341 or sfunk@wnit.org. Gifts may also be mailed to WNIT at 300 West Jefferson Blvd., South Bend, IN 46601. All gifts postmarked by May 28 will count towards this challenge. Please note “WNIT Day of Giving” when sending your gift by mail.

WNIT Public Television recognizes the impact of our generous challenge grant donors and thanks you all for your kindness during this difficult time. It is only through your continued support, and special opportunities such as the WNIT Day of Giving, that we are able to bring you iconic PBS and local programs that impact our community and to rise to challenges to provide additional at-home learning opportunities for the children of our community.

Thank you in advance for making the WNIT Day of Giving on May 28 a huge success!



WNIT Channel Guide

	COMCAST			DISH/DIRECTV OR AT&T U-VERSE *		MEDIACOM		
	SD	HD	SD 34.2	SD	HD	SD	HD	SD 34.2
INDIANA						4	704	120
Argos	-	-	371	34	-	4	704	120
Bourbon	-	-	371	34	-	4	704	120
Bremen	-	-	371	34	-	4	704	120
Bristol	10	191	371	34	-	-	-	-
Culver	-	-	371	34	-	4	704	120
Elkhart	10	191	371	34	-	-	-	-
Goshen	10	191	371	34	-	-	-	-
Jefferson Township	10	191	371	34	1034	-	-	-
Knox	-	-	371	34	1034	4	704	120
LaGrange County	-	-	371	34	1034	3	704	-
Lakeville	-	-	371	34	1034	4	704	120
LaPaz	-	-	371	34	1034	4	704	120
LaPorte (city)	-	26	371	34	1034	-	-	-
LaPorte County (Eastern)	10	191	371	34	1034	-	-	-
LaPorte County (Western)	-	26	371	34	1034	-	-	-
Leesburg	-	-	-	-	-	4	704	120
Michigan City	-	26	371	34	1034	-	-	-
Mishawaka	10	191	371	34	1034	-	-	371
Middlebury	10	191	371	34	1034	-	-	-
Milford	-	-	-	-	-	4	704	120
Nappanee	10	191	371	34	1034	4	704	120
North Judson	10	191	371	34	1034	4	704	120
North Liberty	10	191	371	34	1034	4	704	120
North Webster	-	-	-	-	-	4	704	120
Pierceton	-	-	-	-	-	4	704	120
Plymouth	10	191	371	34	1034	-	-	-
Porter County	-	26	371	34	1034	-	-	-
Rochester	10	191	371	34	1034	-	-	-
South Bend	10	191	371	34	1034	-	-	371
Syracuse	-	-	371	34	1034	4	704	120
Tippecanoe	-	-	-	-	-	4	704	120
Valparaiso	-	26	371	34	1034	-	-	-
Walkerton	-	-	371	34	1034	4	704	-
Wakarusa	10	191	371	34	1034	-	-	-
Warsaw	10	191	371	34	1034	-	-	-
Winamac	10	191	-	-	-	-	-	-
MICHIGAN								
Benton Harbor	10	191	371	34	1034	-	-	-
Berrien Springs	10	191	371	34	1034	-	-	-
Buchanan	10	191	371	34	1034	-	-	-
Cassopolis	10	191	371	34	1034	-	-	-
Constantine	10	191	371	34	1034	-	-	-
Dowagiac	10	191	371	34	1034	-	-	-
Edwardsburg	10	191	371	34	1034	-	-	-
New Buffalo	10	191	371	34	1034	-	-	-
Niles	10	191	371	34	1034	-	-	-
Sister Lakes	10	191	371	-	-	-	-	-
Stevensville	10	191	371	34	1034	-	-	-
St. Joseph (city)	10	191	371	34	1034	-	-	-
Three Rivers	11	-	-	-	-	-	-	-
White Pigeon	10	191	371	34	1034	-	-	-

CHARTER CABLE IN STURGIS, MI HAS REASSIGNED ITS CHANNELS

Original positions are: Base Tier

WNIT 34.1, #2. New assignment: #12.

WNIT 34.1, #781. New assignment: #785.

WNIT 34.1, #135. New assignment: #195.

After Charter's conversion to all-digital, station will continue to be available to ALL Charter customers served by the above lineups in a digital format on the basic tier of service.

ROKU

WNIT is excited to announce the much-anticipated PBS and PBS KIDS channels are now available on Roku! The PBS channel features videos from popular PBS programs. Once you activate the PBS channel and choose WNIT as your local station, you can stream content from WNIT's local productions, as well as short, web-original videos from Webby Award-winning PBS Digital Studios. With the arrival of the PBS KIDS channel, junior streamers can enjoy full-length episodes and clips from great shows including *Curious George*, *Daniel Tiger's Neighborhood*, *Dinosaur Train*, *Super WHY!* and *The Cat in the Hat Knows a Lot About That!*



wnit
INFOCUS



Visit us at wnit.org



MAILING ADDRESS

WNIT Center for Public Media
PO Box 7034
South Bend, IN 46634-7034

STREET ADDRESS

300 West Jefferson Boulevard
South Bend, IN 46601

Phone: (574) 675-9648

Email: wnit@wnit.org

©2020 Michiana Public Broadcasting Corporation
Statement of Frequency: WNIT PUBLIC TELEVISION
PLANNER (USPS 103-650 ISSN 1523-9373) is published
bi-monthly by The Michiana Public Broadcasting
Corporation, a non-profit corporation in the State of
Indiana at 300 West Jefferson Boulevard, South Bend,
IN 46601. Periodical postage paid at South Bend, IN and
additional mailing offices. POSTMASTER: Send address
changes to P.O. Box 7034, South Bend, IN 46634-7034.
Editor: Jamal Henry. Designer: Ginger Santiago.

What's Inside?



AT-HOME LEARNING 22

Primetime June	18
Production News	20
Daytime Programming	24
Overnight Programming	26
Honor Roll Members	30
Directors' Circle	31
WNIT Supporters	32

Worth Watching May	6
Worth Watching June	10
Membership Corner	13
Primetime May	14
PBS KIDS 24/7	16

On the Cover

THE PBS KIDS 24/7 CHANNEL ON WNIT TURNS ONE!

On June 24, 2019, WNIT Public Television launched the “PBS Kids 24/7 Channel on WNIT” giving children and parents access to high-quality educational programming throughout the entire course of their day. Throughout its first year on the airwaves, the “PBS Kids 24/7 Channel on WNIT” has not only become one of the highest rated children’s programming channels in the Michiana area, but also has helped provide educational programming to a large number of children in the Michiana area who do not have access to high-quality preschool education. Join in the fun every day on Ch. 34.3 and celebrate with your favorite PBS Kids characters.



Worth Watching **May**



CALL THE MIDWIFE (SEASON 9)

Sundays at 8pm

May membership programming is featured in orange.

SOMEWHERE SOUTH

Friday, May 1 at 9pm

Chef and author Vivian Howard digs deeper into the lesser known roots of Southern food, Southern cooking, and Southern living.

JULIA CHILD: AMERICAN MASTERS

Friday, May 1 at 10pm

Savor the life and legacy of Julia Child, who introduced French cuisine to Americans.

CALL THE MIDWIFE: SEASON 9

Sundays at 8pm

The medics and midwives of Nonnatus House encounter new challenges as the population shifts, rules change and old diseases return.

WORLD ON FIRE

Sundays at 9pm

WORLD ON FIRE is a World War II drama that follows the intertwining fates of ordinary people in five countries as they grapple with the effects of the war on their everyday lives.

BAPTISTE

Sundays at 10pm

Tcheky Karyo revives his role as French detective Julien Baptiste in this spinoff of “The Missing.”

GRANTCHESTER: SEASON 4

Sundays at 11pm

James Norton and Robson Green star as the unlikely clergyman/cop duo fighting crime in the English hamlet of Grantchester in the 1950s.

GEORGE W. BUSH: AMERICAN EXPERIENCE

**Monday, May 4
& Tuesday, May 5 at 9pm**

The newest production in the American Experience collection THE PRESIDENTS, “W” features interviews with historians, journalists and several members of the president’s inner circle.

SPY IN THE WILD

Wednesdays, May 6-20 at 8pm

Robotic, uncanny look-alike animals infiltrate the natural world to film surprising behavior among wildlife from around the globe.

H2O: THE MOLECULE THAT MADE US

Wednesday, May 6 at 9pm

H2O: THE MOLECULE THAT MADE US is a landmark, three-part series that tells the human story through our relationship to water.

POLDARK ON MASTERPIECE

Thursdays at 8pm

Aidan Turner (The Hobbit) stars as Ross Poldark, a redcoat who returns to Cornwall after battle to discover that his father is dead, his lands are ruined, and his true love is engaged to another.

ASIAN AMERICANS

**Monday, May 11 & Tuesday, May 12
at 8pm**

ASIAN AMERICANS is a five-hour film series that will chronicle the contributions, and challenges of Asian Americans, the fastest-growing ethnic group in America.

THE REGISTRY

Monday, May 11 at 10pm

“Who will remember us when we’re gone?” asks 90-year-old Seiki Oshiro, who helped put together the only comprehensive list, a registry of members of the secret Japanese American U.S. Army unit that fought in the Pacific.

NOVA: EAGLE POWER
Wednesday, May 13 at 9pm

This film follows the dramatic story of a family of bald eagles and bird specialist Lloyd Buck puts his trained golden eagle to the test in a series of remarkable experiments.

**GREAT PERFORMANCES:
LEONARD BERNSTEIN MASS**
Friday, May 15 at 9pm

Taped in 1973 in Vienna, the production blends the liturgy of the Roman Catholic Mass with a mixture of musical idioms—blues, rock, folk, hymns, chant and Broadway-style tunes.

**ANTIQUES ROADSHOW: CELEBRATING
ASIAN PACIFIC HERITAGE**
Thursday, May 14 at 10pm,
Saturday, May 16 at 8pm
& Monday, May 18 at 9pm

ROADSHOW turns the spotlight on incredible items with Asian and Pacific Islands origins, including a Hawaiian kou bowl, a Ghandi presentation spinning wheel and more.

**CREATED EQUAL: CLARENCE THOMAS
IN HIS OWN WORDS**
Monday, May 18 at 10pm

Tells the Clarence Thomas story truly and fully, without cover-ups or distortions.

NOVA: DEADLIEST TORNADOES
Tuesday, May 19 at 8pm

The science behind the tornado outbreak of 2011, tornado prediction and how communities can protect themselves from future storms.

**MR. TORNADO:
AMERICAN EXPERIENCE**
Tuesday, May 19 at 9pm

Japanese American researcher Tetsuya Theodore Fujita, aka Mr. Tornado, created the Fujita scale of tornado intensity and damage and is credited with advancing modern understanding of severe weather phenomena.

NOVA: DECODING COVID-19
Wednesday, May 20 at 9pm

The coronavirus SARS-CoV-2 has upended life as we know it in a matter of mere months. But at the same time, an unprecedented global effort to understand and contain the virus—and find a treatment for the disease it causes—is underway. Join the doctors on the front lines of the fight against COVID-19 as they strategize to stop the spread, and meet the researchers racing to develop treatments and vaccines. Along the way, discover how this devastating disease emerged, what it does to the human body, and why it exploded into a pandemic.

SAMMY DAVIS, JR. AMERICAN MASTERS
Friday, May 22 at 9pm

This major film documentary examines the performer's vast career and his journey for identity through the shifting tides of civil rights and racial progress during 20th-century America.

**NATIONAL MEMORIAL DAY CONCERT
2020**
Sunday, May 24 at 8pm & 9:30pm

On the eve of Memorial Day, a star-studded lineup will grace the stage for one of PBS' highest-rated programs.

**FINDING YOUR ROOTS:
BEYOND THE PALE**
Tuesday, May 26 at 8pm

Explore the Jewish heritages of actor Jeff Goldblum, radio host Terry Gross and comic Marc Maron.

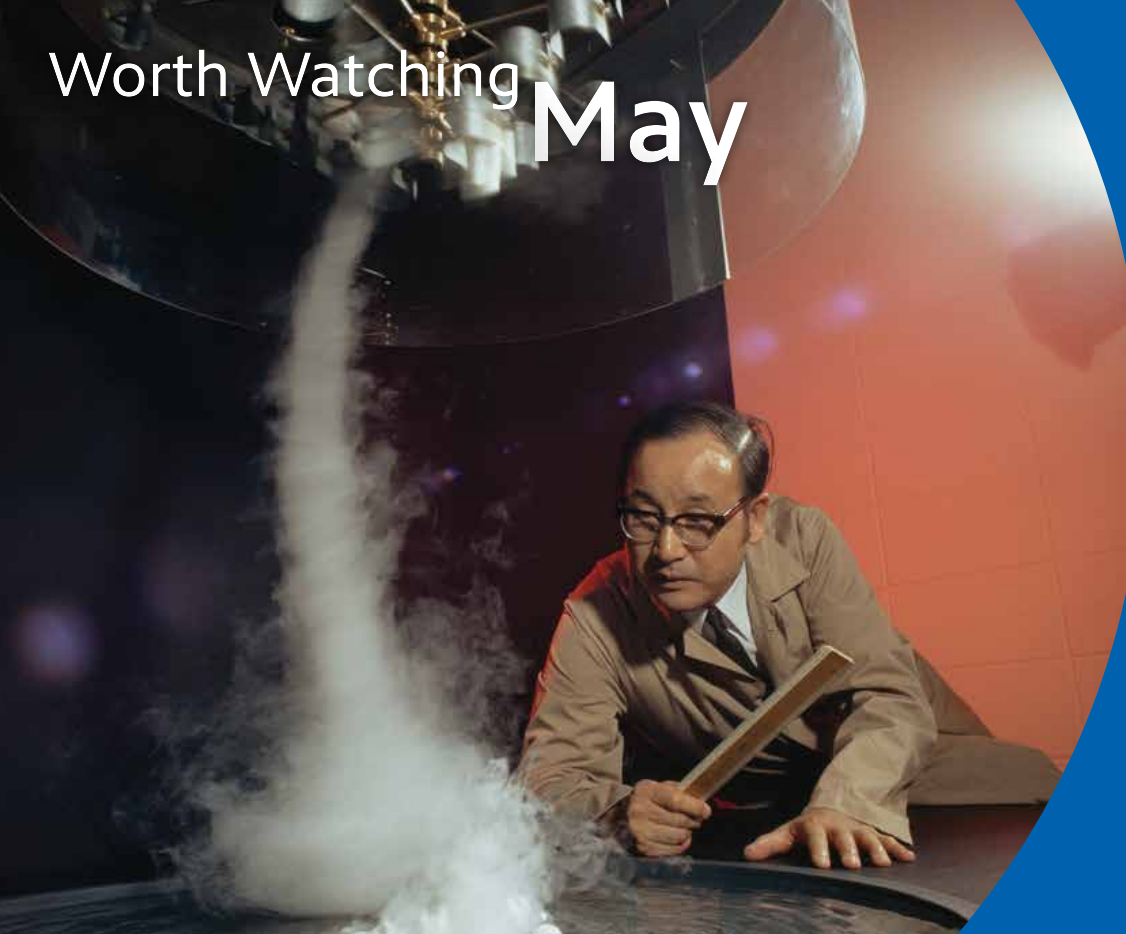
**VIRAL: ANTI-SEMITISM IN
FOUR MUTATIONS**
Tuesday, May 26 at 9pm

Filmmaker Andrew Goldberg explores its infectious behavior in his film "Viral: Antisemitism in Four Mutations" as he travels through four countries to speak firsthand with victims, witnesses, anti-Semites and interviewees.

**H2O:
THE MOLECULE
THAT MADE US**
Wednesday, May 6 at 9pm



Worth Watching **May**




MR. TORNADO: AMERICAN EXPERIENCE

Tuesday, May 19 at 9pm

May membership programming is featured in orange.

IRONHAND
WINE BAR
Featuring wines from
IRONHAND Vineyard

A boutique winery
in the St. Joseph River Valley.
Live music and gourmet small plates
in a lovely setting by the river.

 Located in the Armory
1026 Northside Blvd., South Bend
www.ironhandvineyard.com
574.204.2700

CHANGE YOUR BRAIN, HEAL YOUR MIND WITH DANIEL AMEN, MD

Friday, May 29 at 8:30pm

Dr. Daniel Amen outlines six practical steps to make one feel happier, sharper and more in control, including strategies to help with a variety of things from anxiety to addictions.

ICONIC WOMEN OF COUNTRY

Saturday, May 30 at 7:00pm

ICONIC WOMEN OF COUNTRY opens up the music vaults to provide an intimate look at legendary female artists, their stories and songs, and why they've stood the test of time. A love letter to the women of Nashville, the program pays tribute to 15 icons of country music - Dolly Parton, Tammy Wynette, Loretta Lynn, Patsy Cline, Brenda Lee and more - with heartfelt performances from ten contemporary artists, including Trisha Yearwood, Wynonna Judd and Kathy Mattea.

RICK STEVES' FASCISM IN EUROPE

Sunday, May 31 at 4:30pm

In this one-hour special, Rick Steves travels back a century to learn how fascism rose and then fell in Europe — taking millions of people with it. The goal of RICK STEVES FASCISM IN EUROPE is to learn from the hard lessons of 20th-century Europe, and to recognize that ideology in the 21st century.

OUR TOWN: BUCHANAN

Sunday, May 31 at 6:00pm

Buchanan, Michigan, also known as "Redbud City," is located in southwestern Michigan. It is a traditional Midwestern small town with a thriving downtown and tree lined streets. OUR TOWN BUCHANAN will showcase the special aspects of this community told through people who live and work in Buchanan.

SOMETHING FOR ALL UNIVERSITY PARK MALL

Journeys Kidz
Apple
lululemon Pop-Up
Hollister
The Children's Place
Pandora


UNIVERSITY PARK MALL
A SIMON MALL



When it's safe, we look forward to celebrating with you!



wnit's Kids Club **Day in the Park**

Fragomeni Shelter
St. Patrick's County Park

Watch our website for details!
wnit.org/kids/kidsday.html



Worth Watching **June**



THE WINDERMERE CHILDREN: IN THEIR OWN WORDS

Tuesday, June 2 at 7:30pm

April membership programming is featured in orange.

SUZE ORMAN'S ULTIMATE RETIREMENT GUIDE

**Monday, June 1 at 8pm,
Wednesday, June 3 at 10:30pm,
Friday, June 5 at 8:30pm
& Monday, June 8 at 10pm**

Join the acclaimed personal finance expert for essential advice on planning for and thriving in retirement. With empathy, straight talk and humor, Suze provides information about key steps for anyone trying to achieve their "ultimate retirement."

THE WINDERMERE CHILDREN: IN THEIR OWN WORDS

Tuesday, June 2 at 7:30pm

This powerful documentary reveals a little-known story of 300 young orphaned Jewish refugees who began new lives in England's Lake District in the summer of 1945.

LINDA RONSTADT: LIVE IN HOLLYWOOD

Wednesday, June 3 at 7:30pm

Recorded on April 24, 1980 at Television Center Studios in Hollywood, this concert captures Ronstadt at the peak of her reign as America's most popular female rock singer.

NAT KING COLE'S GREATEST SONGS

Saturday, June 6 at 6pm

This documentary is a centennial celebration of Nat King Cole with the first-ever special to present full performances of his greatest hits and most cherished songs.

GREAT PERFORMANCES: MOODY BLUES - THE DAYS OF FUTURE PASSED LIVE

Wednesday, June 10 at 7:30pm

Celebrating the 50th anniversary of their landmark album, The Moody Blues took to the road to perform the entire LP *live*.

OUT LOUD

Friday, June 12 at 9pm

Follow queer actor Dyllon Burnside on a journey to discover how LGBTQ Americans are finding ways to live authentically and with pride in the modern South.

THE LAVENDER SCARE

Friday, June 12 at 10pm

THE LAVENDER SCARE tells the little-known story of an unrelenting campaign by the federal government to identify and fire employees suspected of being homosexual.

PRINCE ALBERT: VICTORIAN HERO REVEALED

Sunday, June 14 at 8pm

This special sheds new light on one of British history's most significant royal figures and suggests his innovative ideas transformed Great Britain's fortunes.

GRANTCHESTER: SEASON 5

**Sundays at 9pm (Beginning June 14)
& Saturdays at 11pm**

It's 1957, and Will Davenport (Tom Brittney) has settled into his role as the vicar of Grantchester, preaching to a packed church. But Will's faith will be thoroughly tested as he and Geordie are reminded once more that there's darkness lurking in their little corner of Cambridgeshire.

BEECHAM HOUSE ON MASTERPIECE

Sundays at 10pm (Beginning June 14)

BEECHAM HOUSE tells the story of enigmatic Englishman and former soldier John Beecham (Tom Bateman, *Vanity Fair*, *Murder on the Orient Express*).

MODUS

Sundays at 11pm (Beginning June 14)

Adapted by Emmy award-winning screenwriters Mai Brostrom and Peter Thorsboe, from the book by Anne Holt, MODUS follows psychologist and profiler Inger Johanne Vik (Melinda Kinnaman).

STONEWALL UPRISING: AMERICAN EXPERIENCE

Monday, June 15 at 10pm

In June 1969, a police raid on New York's Stonewall Inn sparks a three-day riot that leads to the gay-rights movement.

MAE WEST: AMERICAN MASTERS

Tuesday, June 16 at 8pm

& Monday, June 22 at 10pm

This documentary explores West's life and career, as she "climbed the ladder of success wrong by wrong" to become a writer, performer and subversive agitator for social change.

NOVA:

AUSTRALIA'S FIRST 4 BILLION YEARS

Wednesdays at 9pm (Beginning June 17)

NOVA's four-part "Australia's First 4 Billion Years" takes viewers on a rollicking adventure from the birth of the Earth to the emergence of the world we know today.

PREHISTORIC ROAD TRIP

Wednesday, June 17 at 10pm

Emily Graslie, the creator and host of *The Brain Scoop* and the Field Museum's Chief Curiosity Correspondent, explores the fossils and incredible geology of the Northern Plains region where she grew up.

GREAT PERFORMANCES: ANN

Friday, June 19 at 9pm

Great Performances: Ann is a no-holds-barred theatrical portrait of Ann Richards, legendary Governor of Texas (1991-95).

LUCY WORSLEY'S ROYAL MYTHS AND SECRETS

Sunday, June 21 at 8pm

Host and historian Lucy Worsley takes viewers across Britain and Europe to visit incredible locations where royal history was made.

TONI MORRISON: AMERICAN MASTERS

Tuesday, June 23 at 8pm

This documentary is an artful and intimate meditation on the legendary storyteller that examines her life, her works and the powerful themes she has confronted throughout her literary career.

GREAT PERFORMANCES:

GLORIA – A LIFE

Friday, June 26 at 9pm

This intimate theatrical production details the life of about, one of the most inspiring women of the feminist movement.

POV: AND SHE COULD BE NEXT

Monday, June 29

& Tuesday, June 30 at 9pm

This miniseries follows women of color as political candidates and organizers who seek to expand the electorate, asking whether democracy itself can be preserved and made stronger by those most marginalized.




TONI MORRISON: AMERICAN MASTERS

Tuesday, June 23 at 8pm





PROTECTING WHAT MATTERS MOST

**NATURE CAT:
NATURAL WONDERS WEEK
MAY 11-15**

Tally ho! In this week of all-new episodes, Nature Cat, Squeeks, Daisy and Hal explore national wonders such as The Grand Canyon, Old Faithful, The Great Salt Lake...and...Niagara Falls? (Water! Why does it have to be water?)

Onward and wonderward!

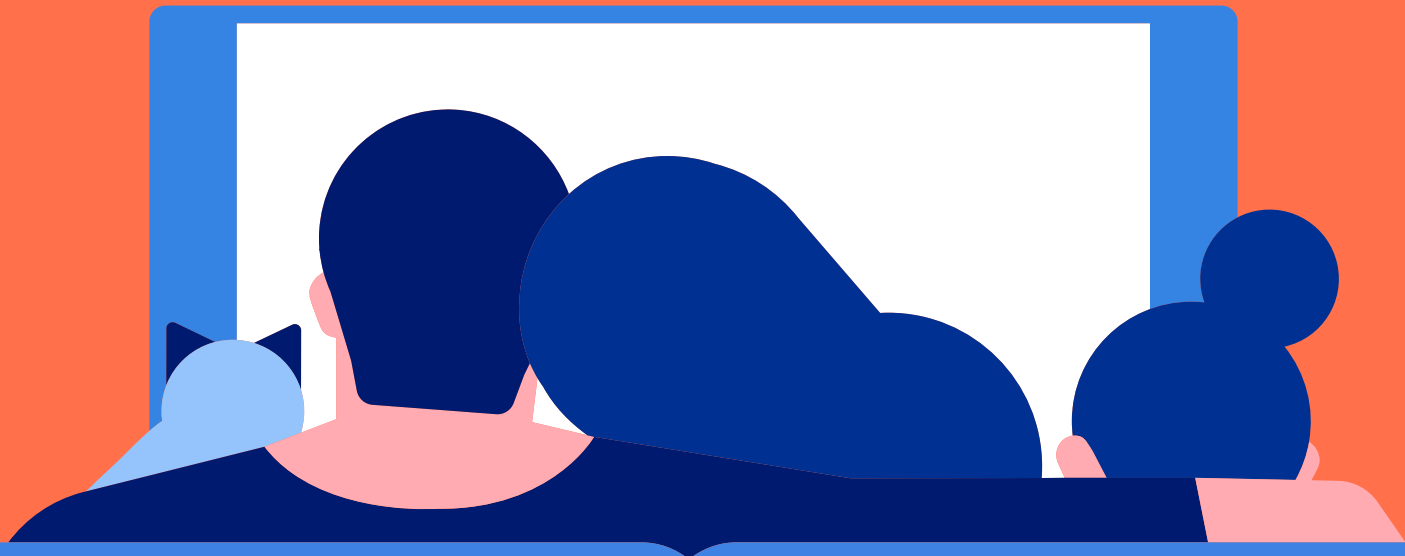
WNIT  **PBS** | Passport Instant. Anytime. Anywhere.



WNIT Passport is a member benefit that provides you with extended access to an on-demand library of quality local and national public television programming. With access to tens of thousands of hours of your favorite programs, WNIT Passport allows you to watch even more episodes of your favorites, including full seasons of many current and past series.

**Learn more at wnit.org.
Select the Passport button on the left.**





JUNE 2020 Spring Membership Campaign

WNIT's June Membership Campaign begins Thursday, May 28 and runs through Wednesday, June 10. Our on-air Membership Campaigns remain the most effective way of converting viewers to viewer-members and join the WNIT family of supporters. While these drives represent less than two percent of our annual broadcast hours, they do provide WNIT with the majority of revenue required to purchase and produce the regular and local programming enjoyed by everyone throughout northern Indiana and southwestern Michigan.

Remember to check out the diverse line-up of new fundraising programs. And be sure to tell your family and friends why you think supporting WNIT is important, particularly as we all get through these difficult times together.

WHAT'S NEW on WNIT PASSPORT!

Have you ever wondered what programs have recently been added to WNIT Passport? Looking for some binge-worthy television for the weekend? Go to www.wnit.org/passport and scroll down to the See All Programs Available link and the Recently Added Videos section to view the new and available WNIT Passport programs. Be sure to bookmark the new web page so you always know what's available on WNIT Passport video on demand for qualifying WNIT Members.

If you're not a member of WNIT and want to learn more about this WNIT member benefit, call Member Services at 574-675-9648 or email Cindy at cmccraner@wnit.org or Laura at latkins@wnit.org.

WNIT BOX OFFICE UPDATES

If you received tickets from WNIT for an upcoming concert, please note the following updates:

Brit Floyd: Echoes 2020 - Rescheduled date is Monday, July 20, 2020 at 8pm at the Morris Performing Arts Center in South Bend. VIP Soundcheck packages and concert tickets for the April 7, 2020 concert will be honored for the July 20th date.

Celtic Woman: Celebration – Rescheduled date is Thursday, April 8, 2021 at the Blue Gate Performing Arts Center in Shipshewana. Tickets and meet & greets for the April, 14, 2020 concert at Blue Gate Performing Arts Center will be honored for the April 8, 2021 date.

“
Best programming out there, even with all the streaming services. I also like to know that my donation helps with keeping PBS NewsHour on the air.
– Carol (Valparaiso, IN)
”

**It's Viewers Like You
who make a real difference
to everyone in our community.
THANK YOU for supporting WNIT!**



34.1 Primetime May



Channel Guide
now available in the
Android App Store



(Programs subject to change. For the most up to date schedule, visit wnit.org.)

	7:00 PM	7:30 PM	8:00 PM	8:30 PM	9:00 PM	9:30 PM	10:00 PM	10:30 PM	11:00 PM	11:30 PM
FRI 1	COVID-19: WKAR	COVID-19: WNIT	Washington Week	Firing Line	Somewhere South		Julia Child: American Masters		Amanpour	
SAT 2	Lawrence Welk Show: Show Stoppers		Antiques Roadshow: McNay Art Museum		As Time Goes By		Keeping Up Appearances		Margaret the Rebel Princess	
SUN 3	Father Brown: Season 5, Ep. 6		Call the Midwife: Season 9, Ep. 6		World on Fire: Ep. 5		Baptiste: Ep. 4		Grantchester: Season 4, Ep. 2	
MON 4	Dinner & A Book	Rick Steves	Antiques Roadshow: McNay Art Museum		George W. Bush: American Experience				Amanpour	
TUE 5	Economic Outlook	Rick Steves	The Queen at War		George W. Bush: American Experience				Amanpour	
WED 6	EducationCounts_Michiana	Outdoor Elements	A Spy in the Wild: The North		H2O: The Molecule That Made Us		Expedition With Steve Backshall		Amanpour	
THUR 7	Experience Michiana	Under the Radar	Poldark: Season 1 Finale				Antiques Roadshow: McNay Art Museum		Amanpour	
FRI 8	COVID-19 (WKAR)	Overheard	Washington Week	Firing Line	In This Together	Great Performances: LA Philharmonic			Amanpour	
SAT 9	Lawrence Welk Show: 25th Anniversary		Antiques Roadshow: McNay Art Museum		As Time Goes By		Keeping Up Appearances		Margaret the Rebel Princess	
SUN 10	Father Brown: Season 5, Ep. 7		Call the Midwife: Season 9, Ep. 7		World on Fire: Ep. 6		Baptiste: Ep. 5		Grantchester: Season 4, Ep. 3	
MON 11	Dinner & A Book	Rick Steves	Asian Americans: Pt. 1				The Registry		Amanpour	
TUE 12	Economic Outlook	Rick Steves	Asian Americans: Pt. 2				Asian Americans: Pt. 3		Amanpour	
WED 13	EducationCounts_Michiana	Outdoor Elements	A Spy in the Wild: The Islands		NOVA: Eagle Power		Expedition With Steve Backshall		Amanpour	
THUR 14	Experience Michiana	Under the Radar	Poldark: Season 2, Ep. 1				Antiques Roadshow: Celebrating Asian Pacific Heritage		Amanpour	
FRI 15	Politically Speaking	Overheard	Washington Week	Firing Line	Great Performances: Leonard Bernstein Mass				Amanpour	
SAT 16	Lawrence Welk Show: Tribute to Bing		Antiques Roadshow: Celebrating Asian Pacific Heritage		As Time Goes By		Keeping Up Appearances		A Very British Romance	
SUN 17	Father Brown: Season 5, Ep. 8		Call the Midwife: Season 9, Ep. 8		World on Fire: Ep. 7		Baptiste: Ep. 6		Grantchester: Season 4, Ep. 4	
MON 18	Dinner & A Book	Rick Steves	Antiques Roadshow: Little Rock		Antiques Roadshow: Celebrating Asian Pacific Heritage		Created Equal: Clarence Thomas in His Own Words			
TUE 19	Economic Outlook	Rick Steves	Mr. Tornado: American Experience		NOVA: Deadliest Tornadoes		Frontline: Inside Italy's COVID War		Amanpour	
WED 20	EducationCounts_Michiana	Outdoor Elements	A Spy in the Wild: The Poles		NOVA: Decoding COVID-19		Expedition With Steve Backshall		Amanpour	
THUR 21	Experience Michiana	Under the Radar	Poldark: Season 2, Ep. 2		Father Brown: Season 5, Ep. 8		Antiques Roadshow: Little Rock		Amanpour	
FRI 22	Politically Speaking	Overheard	Washington Week	Firing Line	Sammy Davis, Jr.: American Masters				Amanpour	
SAT 23	Lawrence Welk Show: America's Wonderland		Antiques Roadshow: Little Rock		As Time Goes By		Keeping Up Appearances		A Very British Romance	
SUN 24	Father Brown: Season 5, Ep. 9		National Memorial Day Concert 2020			National Memorial Day Concert 2020			Grantchester: Season 4, Ep. 5	
MON 25	Dinner & A Book	Rick Steves	Antiques Roadshow: Charleston		Antiques Roadshow: Charleston		The Greatest Bond			
TUE 26	Economic Outlook	Rick Steves	Finding Your Roots: Beyond the Pale		Viral: Antisemitism in Four Mutations			Frontline: The Last Survivors		Amanpour .
WED 27	EducationCounts_Michiana	Great Lakes Now	Nature: Sex, Lies & Butterflies		NOVA: Last B-24		Expedition With Steve Backshall		Amanpour	
THUR 28	Experience Michiana	Under the Radar	Poldark: Season 2, Ep. 3		Father Brown: Season 5, Ep. 9		Antiques Roadshow: Charleston		Amanpour	
FRI 29	Politically Speaking	Overheard	Washington Week	Change Your Brain Heal Your Mind				Longevity Paradox		
SAT 30	Iconic Women of Country			Linda Ronstadt: Live in Hollywood			Ken Burns: Country Music			
SUN 31	Bob Hope: American Masters				Downton Abbey Returns				Suze Orman's Ultimate Retirement Guide	



(Programs subject to change. For the most up to date schedule, visit wnit.org.)

	7:00 PM	7:30 PM	8:00 PM	8:30 PM	9:00 PM	9:30 PM	10:00 PM	10:30 PM	11:00 PM	11:30 PM
FRI 1	PBS NewsHour		Experience Michiana	Canada Files	Sun Studio Sessions	Articulate	Kate: JJ Grey & Mofro		PBS NewsHour	
SAT 2	Antiques Roadshow: McNay Art Museum		Great British Baking Show		A Spy in the Wild: The Tropics		H2O: The Molecule That Made Us		Austin City Limits	
SUN 3	Antiques Roadshow: McNay Art Museum		Dennis DeYoung and the Music of Styx			Perry Como Classics: Till the End of Time			Austin City Limits	
MON 4	PBS NewsHour		Rivers	Places to Love	Restorers: Living History		King of Crimes			
TUE 5	PBS NewsHour		EducationCounts_Michiana	Wealthtrack	History Detectives		Professor T From Walter		PBS NewsHour	
WED 6	PBS NewsHour		Economic Outlook	Untamed	Toward the Source		Pacific Heartbeat		PBS NewsHour	
THUR 7	PBS NewsHour		Dinner & A Book	To Dine For	Call the Midwife: Season 9, Ep. 6		Antiques Roadshow: McNay Art Museum		PBS NewsHour	
FRI 8	PBS NewsHour		Experience Michiana	Canada Files	Sun Studio Sessions	Articulate	Kate: Marty Stuart		PBS NewsHour	
SAT 9	Antiques Roadshow: McNay Art Museum		Great British Baking Show		A Spy in the Wild: The North		H2O: The Molecule That Made Us		Austin City Limits	
SUN 10	Antiques Roadshow: McNay Art Museum		Ken Burns: The National Parks				Aging Backwards 3		Austin City Limits	
MON 11	PBS NewsHour		Rivers	Places to Love	Restorers: Aircraft Recovery		Canyons & Ice		PBS NewsHour	
TUE 12	PBS NewsHour		EducationCounts_Michiana	Wealthtrack	History Detectives		Professor T From Walter		PBS NewsHour	
WED 13	PBS NewsHour		Economic Outlook	Untamed	Babe Ruth at Sing Sing		Pacific Heartbeat		PBS NewsHour	
THUR 14	PBS NewsHour		Dinner & A Book	To Dine For	Call the Midwife: Season 9, Ep. 7		Antiques Roadshow: Celebrating Asian Pacific Heritage		PBS NewsHour	
FRI 15	PBS NewsHour		Experience Michiana	Canada Files	Sun Studio Sessions	Articulate	Kate: Delbert McClinton		PBS NewsHour	
SAT 16	Antiques Roadshow: Celebrating Asian American Heritage		Great British Baking Show		A Spy in the Wild: The Islands		Expedition With Steve Backshall		Austin City Limits	
SUN 17	Antiques Roadshow: Celebrating Asian American Heritage		Perry Como Classics: Till the End of Time			John Fogerty: My 50 Year Trip			Austin City Limits	
MON 18	PBS NewsHour		Rivers	Places to Love	Restorers: The Aviatrix		Day One			
TUE 19	PBS NewsHour		EducationCounts_Michiana	Wealthtrack	History Detectives		Professor T From Walter		PBS NewsHour	
WED 20	PBS NewsHour		Economic Outlook	Untamed	Black in Blue		Pacific Heartbeat		PBS NewsHour	
THUR 21	PBS NewsHour		Dinner & A Book	To Dine For	Call the Midwife: Season 9, Ep. 8		Antiques Roadshow: Little Rock		PBS NewsHour	
FRI 22	Downton Abbey Marathon (8:00am - Midnight)									
SAT 23	Downton Abbey Marathon (8:00am - Midnight)									
SUN 24	Downton Abbey Marathon (8:00am - Midnight)									
MON 25	Downton Abbey Marathon (8:00am - Midnight)									
TUE 26	PBS NewsHour		EducationCounts_Michiana	Wealthtrack	History Detectives		Professor T From Walter		PBS NewsHour	
WED 27	PBS NewsHour		Economic Outlook	Great Lakes Now	To the Ends of the Earth		Vanished Dream		PBS NewsHour	
THUR 28	PBS NewsHour		Dinner & A Book	To Dine For	1st to Flight		Antiques Roadshow: Charleston		PBS NewsHour	
FRI 29	PBS NewsHour		Experience Michiana	Canada Files	Sun Studio Sessions	Articulate	Kate: The Wood Brothers		PBS NewsHour	
SAT 30	Antiques Roadshow: Charleston		Great British Baking Show		Nature: Sex, Lies & Butterflies		Expedition With Steve Backshall		PBS NewsHour	
SUN 31	Antiques Roadshow: Charleston		Tunnel: Vengeance, Pt. 1		Tunnel: Vengeance, Pt. 2		Tunnel: Vengeance, Pt. 3		Austin City Limits	



Where to Watch
PBS Kids 24/7 on Wnit:

- Over the air (34.3)**
- Comcast (Ch. 1159)**
- Mediacom (Ch. 694)**
- Charter (Ch. 196)**
- Quality Cablevision (Ch. 34.3)**
- Sister Lakes Cable TV (Ch. 34.3)**
- Acme Communications (Ch. 36)**
- Winamac CATV (Ch. 34)**
- Pulaski IPTV (Ch. 36)**
- RTC1 (Ch. 9)**

Or livestream at: wnit.org/pbskids247

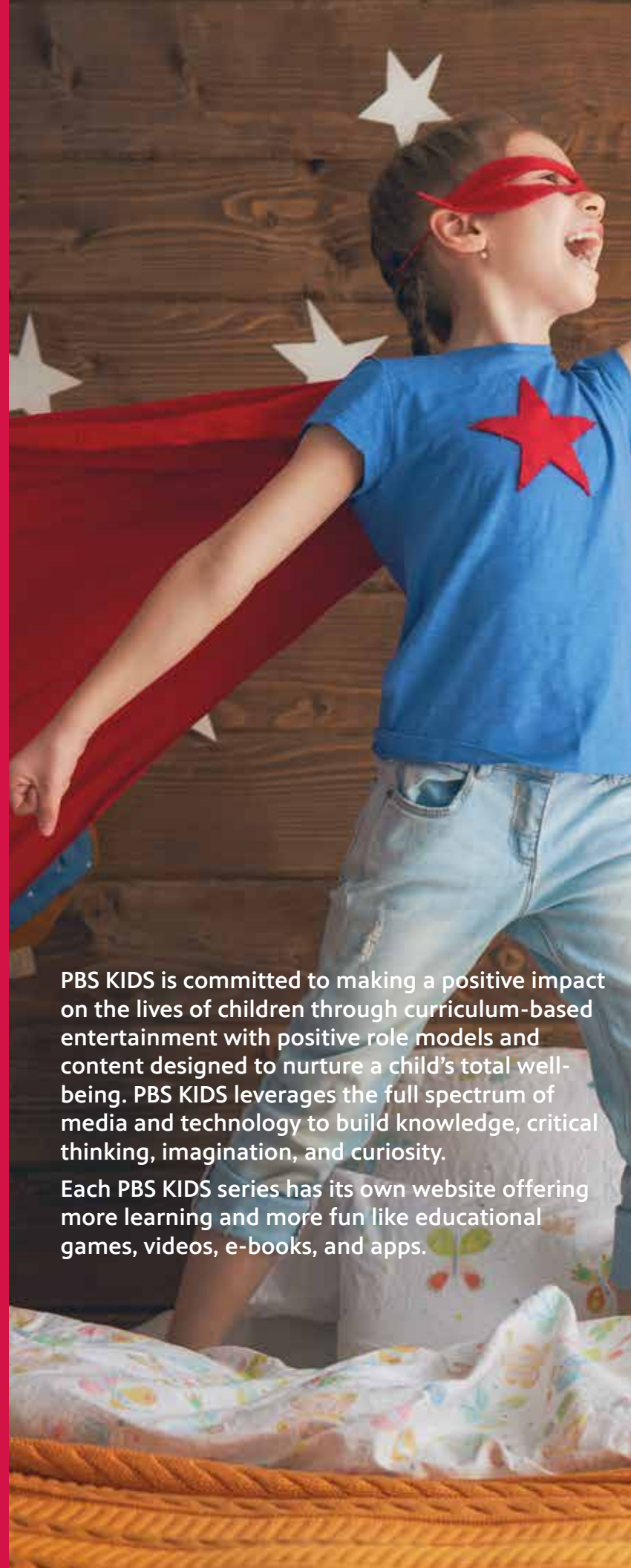
On the Web:

FOR KIDS

- wnit.org/kids
- wnit.org/pbskids247
- pbskids.org

FOR GROWN UPS

- pbs.org/parents
- pbs.org/education
- pbskids.org/learn
- pbskids.org/apps





SERIES OVERVIEW
 Target Age Group: 4-7
 Premieres: June 1, 2020

Hero Elementary is a school for budding superheroes, where kids learn to master their innate powers, like flying and teleportation, while exploring science along the way. This new multiplatform PBS KIDS® series aims to give children the tools they need to solve problems by thinking and acting like scientists and igniting their natural curiosity and empathy.

The stories in **Hero Elementary** center around a team of super students called Sparks' Crew. Lucita Sky, A.J. Gadgets, Sara Snap and Benny Bubbles, led by their quirky and enthusiastic teacher, Mr. Sparks, work together to help people, problem solve and try to make the world a better place. When their imperfect powers aren't up to the task, they look to their other powers – the **Superpowers of Science** – to help them investigate, observe, make predictions and figure out a solution.

Curriculum

The science curriculum in **Hero Elementary** addresses crucial components of children's learning – the ability to develop and test ideas, ask questions, predict and observe – skills known to contribute to learning in other content areas, such as literacy, language development and critical thinking.

The Superpowers of Science:

- Ask questions
- Name the problem
- Investigate
- Get information
- Look for patterns
- Make sense
- Compare
- Explain
- Share what you know
- Figure out a solution

Hero Elementary is supported by a Ready To Learn grant from the U.S. Department of Education.

PBS KIDS is committed to making a positive impact on the lives of children through curriculum-based entertainment with positive role models and content designed to nurture a child's total well-being. PBS KIDS leverages the full spectrum of media and technology to build knowledge, critical thinking, imagination, and curiosity.

Each PBS KIDS series has its own website offering more learning and more fun like educational games, videos, e-books, and apps.

34.3 wnit	Effective through May 31, 2020		
	MON - THUR	FRI	SAT & SUN
6:00 AM	Cyberchase		
6:30 AM	Cyberchase		
7:00 AM	Arthur		Ready Jet Go!
7:30 AM	Odd Squad		Cat in the Hat
8:00 AM	Ready Jet Go!		Splash and Bubbles
8:30 AM	Peg + Cat		
9:00 AM	Clifford (Classic Series)		Clifford (Reboot)
9:30 AM	Pinkalicious		
10:00 AM	Sesame Street		
10:30 AM	Super WHY!		Esme & Roy
11:00 AM	WordWorld		Super WHY!
11:30 AM	Splash and Bubbles		Daniel Tiger
12:00 PM	Sid the Science Kid		Daniel Tiger
12:30 PM	Caillou		Dinosaur Train
1:00 PM	Peep		Dinosaur Train
1:30 PM	Martha Speaks		Pinkalicious
2:00 PM	Sesame Street		Let's Go Luna!
2:30 PM	Daniel Tiger		Nature Cat
3:00 PM	Daniel Tiger		Arthur
3:30 PM	Pinkalicious		Arthur
4:00 PM	The Cat in the Hat		Odd Squad
4:30 PM	Dinosaur Train		Odd Squad
5:00 PM	Let's Go Luna!		Molly of Denali
5:30 PM	Nature Cat		Xavier Riddle
6:00 PM	Wild Kratts		
6:30 PM	Wild Kratts		
7:00 PM	Xavier Riddle	Family Night Block	
7:30 PM	Molly of Denali		
8:00 PM	Odd Squad		
8:30 PM	Arthur		
9:00 PM	Ready Jet Go!		
9:30 PM	WordGirl		

34.3 wnit	Effective June 1, 2020 to September 6, 2020		
	MON - THUR	FRI	SAT & SUN
6:00 AM	Splash and Bubbles		Caillou
6:30 AM	Clifford (Classic)		WordWorld
7:00 AM	Peg + Cat		Peep
7:30 AM	Pinkalicious		Martha Speaks
8:00 AM	Daniel Tiger		Sid the Science Kid
8:30 AM	Daniel Tiger		
9:00 AM	Sesame Street		
9:30 AM	Esme & Roy		Clifford (Reboot)
10:00 AM	Super WHY!		
10:30 AM	Cat in the Hat		
11:00 AM	Nature Cat		
11:30 AM	Ready Jet Go!		
12:00 PM	Cyberchase		
12:30 PM	Arthur		
1:00 PM	Odd Squad		
1:30 PM	Molly of Denali		
2:00 PM	Xavier Riddle		
2:30 PM	Wild Kratts		
3:00 PM	Dinosaur Train		Pinkalicious
3:30 PM	Daniel Tiger		Let's Go Luna!
4:00 PM	Sesame Street		Nature Cat
4:30 PM	Pinkalicious & Peterrific		Odd Squad
5:00 PM	Let's Go Luna!		Hero Elementary
5:30 PM	Nature Cat		Molly of Denali
6:00 PM	Wild Kratts		Xavier Riddle
6:30 PM	Wild Kratts		
7:00 PM	Xavier Riddle	PBS KIDS Family Night	
7:30 PM	Molly of Denali		
8:00 PM	Hero Elementary		
8:30 PM	Odd Squad		
9:00 PM	Arthur		
9:30 PM	WordGirl		



34.1 Primetime June



Channel Guide
now available in the
Android App Store



(Programs subject to change. For the most up to date schedule, visit wnit.org.)

	7:00 PM	7:30 PM	8:00 PM	8:30 PM	9:00 PM	9:30 PM	10:00 PM	10:30 PM	11:00 PM	11:30 PM
MON 1	Dinner & A Book	Suze Orman's Ultimate Retirement Guide			Longevity Paradox With Steven Gundry, MD			Brain Secrets		
TUE 2	Economic Outlook	The Windermere Children: In Their Own Words			Rick Steves Fascism in Europe			Brain Secrets With Dr. Michael Merzenich		
WED 3	EducationCounts_Michiana	Linda Ronstadt: Live in Hollywood			Iconic Women of Country			Suze Orman's Ultimate Retirement Guide		
THUR 4	Experience Michiana	Magic Moments: The Best of 50s Pop				Change Your Brain, Heal Your Mind With Daniel Amen, MD			Painfree Living	
FRI 5	Politically Speaking	Overheard	Washington Week	Suze Orman's Ultimate Retirement Guide			Memory Rescue With Daniel Amen, MD			
SAT 6	Nat King Cole (6 pm)	Red, White and Rock (My Music)				Fleetwood Mac: The Dance				
SUN 7	Moments to Remember				Change Your Brain, Heal Your Mind With Daniel Amen, MD				Longevity Paradox	
MON 8	Dinner & A Book	Red, White and Rock (My Music)				Suze Orman's Ultimate Retirement Guide				
TUE 9	Economic Outlook	Moments to Remember				Memory Rescue				
WED 10	EducationCounts_Michiana	Great Performances: The Moody Blues Days of Future Passed Live				The Longevity Paradox With Steven Gundry, MD			Amanpour	
THUR 11	Experience Michiana	Under the Radar	Poldark: Season 2, Ep. 4		Tales From the Royal Wardrobe		Antiques Roadshow: Vintage Milwaukee		Amanpour	
FRI 12	Politically Speaking	Overheard	Washington Week	Firing Line	Out Loud		The Lavender Scare		Amanpour	
SAT 13	The Lawrence Welk Show: The Vacation Show		Antiques Roadshow: Vintage Milwaukee		As Time Goes By		Keeping Up Appearances		Tales From the Royal Wardrobe	
SUN 14	Father Brown: Season 5, Ep. 10		Prince Albert: Victorian Hero Revealed		Grantchester: Season 5, Ep. 1		Beecham House on Masterpiece		Modus, Ep. 1	
MON 15	Dinner & A Book	Rick Steves	Antiques Roadshow: Vintage Honolulu		Antiques Roadshow: Vintage New York		Stonewall Uprising: American Experience		Amanpour	
TUE 16	Economic Outlook	Rick Steves	Mae West: American Experience			Lady Jessie	Frontline		Amanpour	
WED 17	EducationCounts_Michiana	Outdoor Elements	Spy in the Wild		NOVA: Australia's First 4 Billion Years - Awakening		Prehistoric Road Trip		Amanpour	
THUR 18	Experience Michiana	Under the Radar	Poldark: Season 2, Ep. 5		Father Brown: Season 5, Ep. 10		Antiques Roadshow: Vintage Honolulu		Amanpour	
FRI 19	Politically Speaking	Overheard	Washington Week	Firing Line	Great Performances: Ann				Amanpour	
SAT 20	The Lawrence Welk Show: Big Bands		Antiques Roadshow: Vintage Honolulu		As Time Goes By		Keeping Up Appearances		Grantchester: Season 5, Ep. 1	
SUN 21	Father Brown: Season 5, Ep. 11		Royal Myths and Secrets		Grantchester: Season 5, Ep. 2		Beecham House on Masterpiece		Modus, Ep. 2	
MON 22	Dinner & A Book	Rick Steves	Antiques Roadshow: Vintage Mobile		Antiques Roadshow: Vintage Indianapolis		Mae West: American Experience		Amanpour	
TUE 23	Economic Outlook	Rick Steves	Toni Morrison: American Masters				Frontline		Amanpour	
WED 24	EducationCounts_Michiana	Great Lakes Now	Spy in the Wild		NOVA: Australia's First 4 Billion Years		Prehistoric Road Trip		Amanpour	
THUR 25	Experience Michiana	Under the Radar	Poldark: Season 2, Ep. 6		Father Brown: Season 5, Ep. 11		Antiques Roadshow: Vintage Mobile		Amanpour	
FRI 26	Politically Speaking	Overheard	Washington Week	Firing Line	Great Performances: Glora - A Life				Amanpour	
SAT 27	The Lawrence Welk Show: County Fair		Antiques Roadshow: Vintage Mobile		As Time Goes By		Keeping Up Appearances		Grantchester: Season 5, Ep. 2	
SUN 28	Father Brown: Season 5, Ep. 12		Royal Myths and Secrets		Grantchester: Season 5, Ep. 3		Beecham House on Masterpiece		Modus, Ep. 3	
MON 29	Dinner & A Book	Rick Steves	Antiques Roadshow: Vintage Philadelphia		POV: And She Could Be Next, Pt. 1				Amanpour & Company	
TUE 30	Economic Outlook	Rick Steves	TBA		POV: And She Could Be Next, Pt. 2				Firing Line	



(Programs subject to change. For the most up to date schedule, visit wnit.org.)

	7:00 PM	7:30 PM	8:00 PM	8:30 PM	9:00 PM	9:30 PM	10:00 PM	10:30 PM	11:00 PM	11:30 PM
MON 1	PBS NewsHour		Good Road	Places to Love	Restorers: Aviation Destination		Independent Lens: Shadow World			PBS NewsHour
TUE 2	PBS NewsHour		EducationCounts_Michiana	Wealthtrack	History Detectives		Professor T		PBS NewsHour	
WED 3	PBS NewsHour		Economic Outlook	Untamed	Southwest Florida's Mangrove Coast		Across the Pacific		PBS NewsHour	
THUR 4	PBS NewsHour		Dinner & A Book	To Dine For	The Roosevelts: An Intimate History - Get Action				PBS NewsHour	
FRI 5	PBS NewsHour		Experience Michiana	Reconnecting Roots	Variety Studio	Articulate	Kate: Kandace Springs		PBS NewsHour	
SAT 6	Antiques Roadshow: Charleston		Great British Baking Show		D-Day at Pointe-Du-Hoc		Omaha Beach: Honor & Sacrifice		Austin City Limits	
SUN 7	TBA	Rick Steves	Great Performances: Rodgers & Hammerstein						Austin City Limits	
MON 8	PBS NewsHour		Good Road	Places to Love	Restorers: They Were All Volunteers		Independent Lens: Acorn & the Fire			PBS NewsHour
TUE 9	PBS NewsHour		EducationCounts_Michiana	Wealthtrack	History Detectives		Professor T		PBS NewsHour	
WED 10	PBS NewsHour		Economic Outlook	Untamed	Troubled Waters: A Turtle's Tale		Across the Pacific		PBS NewsHour	
THUR 11	PBS NewsHour		Dinner & A Book	To Dine For	The Roosevelts: An Intimate History - In the Arena				PBS NewsHour	
FRI 12	PBS NewsHour		Experience Michiana	Reconnecting Roots	Variety Studio	Articulate	Kate		PBS NewsHour	
SAT 13	Antiques Roadshow: Vintage Milwaukee		Great British Baking Show		Windermere Children			Eva: A-7063		
SUN 14	Antiques Roadshow: Vintage Milwaukee		Tunnel: Vengeance		Tunnel: Vengeance		Tunnel: Vengeance		Austin City Limits	
MON 15	PBS NewsHour		Good Road	Places to Love	Inn at Little Washington		Independent Lens: Recorder			PBS NewsHour
TUE 16	PBS NewsHour		EducationCounts_Michiana	Wealthtrack	History Detectives		Professor T		PBS NewsHour	
WED 17	PBS NewsHour		Economic Outlook	Untamed	America's Socialist Experience		Across the Pacific		PBS NewsHour	
THUR 18	PBS NewsHour		Dinner & A Book	To Dine For	The Roosevelts: An Intimate History - The Fire of Life				PBS NewsHour	
FRI 19	PBS NewsHour		Experience Michiana	Reconnecting Roots	Variety Studio	Articulate	Kate: Nancy & Beth		PBS NewsHour	
SAT 20	Antiques Roadshow: Vintage Honolulu		Great British Baking Show		A Spy in the Wild: A Nature Love		Prehistoric Road Trip		Austin City Limits	
SUN 21	Antiques Roadshow: Vintage Honolulu		Great Performances: 42nd Street					Shakespeare in the Shadows	Austin City Limits	
MON 22	PBS NewsHour		Good Road	Places to Love	Roadtrip Nation		Independent Lens: Pipe Dreams		PBS NewsHour	
TUE 23	PBS NewsHour		EducationCounts_Michiana	Wealthtrack	History Detectives		Professor T		PBS NewsHour	
WED 24	PBS NewsHour		Economic Outlook	Great Lakes Now	Guru Nanak: The Founder of Sikhism			Barefoot College		PBS NewsHour
THUR 25	PBS NewsHour		Dinner & A Book	To Dine For	The Roosevelts: An Intimate History - The Storm				PBS NewsHour	
FRI 26	PBS NewsHour		Experience Michiana	Reconnecting Roots	Variety Studio	Articulate	Kate: Marc Broussard		PBS NewsHour	
SAT 27	Antiques Roadshow: Vintage Mobile		Great British Baking Show		A Spy in the Wild: A Nature Intelligence		Prehistoric Road Trip		Austin City Limits	
SUN 28	Antiques Roadshow: Vintage Mobile		Magical Land of Oz: Land		Magical Land of Oz: Ocean		Magical Land of Oz: Human		Austin City Limits	
MON 29	PBS NewsHour		Good Road	Places to Love	Seats at the Table			Two-Spirit PowWow	PBS NewsHour	
TUE 30	PBS NewsHour		EducationCounts_Michiana	Wealthtrack	History Detectives		Modus, Ep. 1		PBS NewsHour	



Updates on WNIT Local Production Programming

With the onset of the coronavirus and many changes associated with it, WNIT has reacted quickly to update and enhance our local coverage.

Many shows, such as **Outdoor Elements** and **Dinner & A Book**, are taped in advance so we were able to continue airing new episodes. **Economic Outlook** had current episodes through the end of March and we are now working on some “virtual” interviews to update content for that program. Likewise, **Politically Speaking** had “fresh” episodes through the end of March. We are currently airing **COVID-19: Answers and Insight**, a weekly program on how COVID-19 is impacting our Michigan viewers in the Politically Speaking time slot.

We produced a new local program, **Coronavirus: What You Need to Know**, with expert interviews from the Indiana region in March and a program on **Mental Health Needs during the Pandemic** in April. WNIT will continue to provide special content on the pandemic as warranted, as we go more in-depth and cover areas not being looked at by the commercial stations. WNIT has also been airing **updates from the governors of Michigan and Indiana** on channel 34.2. We chose to air these on 34.2, so as not to interrupt the early childhood learning experience on 34.1, which is more crucial than ever at this time.

Politically Speaking has also enhanced its coverage by providing trusted content and resources through our Facebook page, including Zoom interviews with elected officials and university experts.

Experience Michiana has expanded its content with virtual interviews presented daily through our web site and Facebook page. Topics range from virtual music lessons, great heat-and-serve meals from a local restaurant, to a live movie discussion. We also presented features on how you can visit the Shedd Aquarium from the safety of your own home and virtual tours with Aaron Perri, from South Bend Venues Parks & Arts.

EducationCounts_Michiana is airing themed episodes on subjects including hands-on nature, social and emotional learning, at-home learning resources for parents and are expanding our weekly coverage with digital interviews being aired on the Education Counts web page and Facebook page.

WNIT is committed to providing the resources needed to help area families get through the challenges of this pandemic with learning materials, resources, trusted information and some entertainment as well!

Dinner & A Book

From the bookshelf to the kitchen, WNIT Public Television's popular *Dinner & A Book* returns with new recipes from best-sellers. Back and better than ever, we've added a whole new flavor to the show for you!

Saturdays @ 10:30 am (34.1) & Mondays @ 7:00 pm (34.1)

Thursdays @ 8:00 pm (34.2)

Economic Outlook

Economic Outlook discusses issues around economic growth, the impact of education on economic development, key industry sectors, the impact of trade on employment, and a host of related issues.

Tuesday @ 7:00pm (34.1) & Sundays @ 12:30pm (34.1)

Wednesday @ 8:00pm (34.2)

EducationCounts_Michiana

EducationCounts_Michiana explores learning across our region, and looks at innovative instructional and developmental initiatives in the 21st Century.

Wednesdays @ 7:00pm (34.1) & Sundays @ 1:30pm (34.1)

Tuesdays @ 8:00pm (34.2)

Experience Michiana

Experience Michiana features all things Michiana. We are out in our communities showcasing those things that make our region unique: things to do, places to eat, art and music to experience, and community events and activities.

Thursdays @ 7:00pm (34.1) & Saturdays @ 5:30pm (34.1)

Fridays @ 8:00pm (34.2)

Outdoor Elements

Outdoor Elements showcases nature, environmental topics and outdoor pursuits in the Michiana region, in partnership with WNIT & St. Joseph Co. Parks

Sundays @ 9:00 am (34.1) & Wednesdays @ 7:30 pm (34.1)

Sundays @ 12:30 pm (34.2)

Politically Speaking

Each week, *Politically Speaking* takes an in-depth look at the local, state and national issues impacting Michiana. Legislators, reporters and academics share their insight on developing policies and the political climate most relevant to viewers in Southwest Michigan and Northern Indiana.

Fridays @ 7:00pm (34.1) & Sundays @ 2:00pm (34.1)

Mondays @ 5:00pm (34.2)

NOVA

Decoding COVID-19

Scientists race to understand and defeat the coronavirus behind the COVID-19 pandemic.



Premiering May 20 at 9 pm on PBS



Retire Like a Champion

Imagine living in a village where everyone knows your name.

A place where people gather to share their life stories and continue to learn from one another. Holy Cross Village at Notre Dame, a one of a kind community filled with kindred spirits and beauty at every turn.

Discover a lifestyle that meets all of your needs and invites you to expand your horizons.

- Luxury Senior Living Offerings**
- Independent Living Villas & Apartments
 - Assisted Living Apartments
 - Skilled Nursing
 - Memory Care
 - Rehabilitation Services
- Come by for a collaborative consultation today.*
- (574) 251-2235**
hello@holycrossvillage.com

<p>LEARN MORE WWW.HOLYCROSSVILLAGE.COM</p> <p>ADDRESS 54515 State Rd. 933 North Notre Dame, IN 46556</p>	<p>STAY CONNECTED f @hcvillage @hcv_ind</p>	<p>MISSION Holy Cross Village at Notre Dame is an interdependent community energized by Holy Cross spirituality and hospitality, and dedicated to providing a nurturing environment focused on dignity and respect.</p>	<p>EQUAL HOUSING OPPORTUNITY</p>
--	--	--	----------------------------------



DOWNTON ABBEY

MASTERPIECE



MEMORIAL DAY WEEKEND MARATHON!

Friday, May 22 - Monday, May 25
8:00am to Midnight

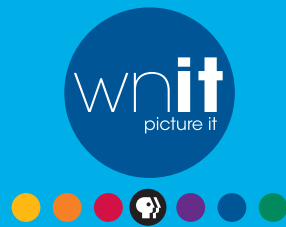


HERO ELEMENTARY™



NEW SERIES!
Monday, June 1st

HERO ELEMENTARY © 2020 Twin Cities Public Media Workshop, LLC. Funding for HERO ELEMENTARY© is provided by Ready To Learn Grant from the U.S. Department of Education. The contents of this document were developed under a grant from the Department of Education. However, those contents do not necessarily represent the policy of the Department of Education, and you should not assume endorsement by the Federal Government. The project is funded by a Ready To Learn grant (PRAward No. L205A10012) provided by the Department of Education to Twin Cities Public Television. Hero Elementary is a registered trademark of Twin Cities Public Television. PBS KIDS and the PBS KIDS Logo are registered trademarks of Public Broadcasting Service. Used with permission.



AT-HOME LEARNING

WNIT takes lead on At-Home Learning during COVID-19 Pandemic

Steve Funk

Associate General Manager and Vice President Development & Marketing

With the outbreak of the coronavirus and area school systems' rapid change to at-home learning, WNIT was uniquely positioned to quickly respond to the need for additional curriculum based educational programming in the home.

With the 24/7 PBS KIDS Channel on WNIT having launched in June 2019 on channel 34.3, WNIT was already offering expanded programming for pre-K through grade 4. This curriculum-based learning both supplemented that of traditional pre-schools and, for the roughly 80% of area children not in a traditional pre-school setting, offered an educational alternative to help keep them on track. WNIT did not forego our traditional children's programming block on our main station Monday through Friday, but with the launch of the 24/7 PBS KIDS Channel added to the hours of educational programming offered in the market.

Very soon after the pandemic hit our area and both Michigan and Indiana Governors gave the "Stay At Home" order, WNIT through a partnership between PBS Learning Media and the WORLD Channel, was able to get a learning block on-air through a temporary channel 34.5. The temporary channel was possible due to the equipment upgrades tied to the launch of the 24/7 PBS KIDS Channel in 2019 and thanks to the many "Friends of the Neighborhood" donors who made it all possible. The WNIT WORLD Channel launched on March 30, airing Monday-Friday from Noon-5:00 p.m. This channel offers science, history and other educational programming specifically targeted for the grade 6-12 audience. It will air through the duration of this crisis.

On April 6, WNIT in partnership with its Indiana Public Broadcasting Stations partners across the state, announced a collaboration with the Indiana Department of Education to provide detailed information on our daily programming, highlighting the age demographic and educational subject that was covered in each day's programming. This allows teachers to

better assign age-appropriate learning to area students. WNIT was quick to share this same information with educators in our Michigan viewing area.

All programming is free over-the-air with an antenna and much has been picked up by area cable providers.

In addition to the television programming, the PBS learning resources expand into activities and free online materials to enhance the learning environment. Parents and children are able to work at home, together to reinforce the skill sets learned during that days programming. Online resources include:

<https://www.wnit.org/kids/channel.html>

<https://www.pbs.org/parents/>

Parents can also sign up for daily newsletters from both WNIT and PBS Kids to get information on learning at home delivered to their email daily Monday through Friday. More information is available at www.wnit.org.

WNIT is proud of the role we play in our community and that role begins with education, from early childhood education through life-long learning. At this time, when faced with the challenge of in-home learning, we have responded to aid our community as only public television can. Perhaps PBS President Paula Kerger put it best in a video message to all stations when she said, "Public Television was made for this!"

From the early days of *Mister Rogers* and *Sesame Street*, PBS and WNIT have been there helping to educate the children of America. At this time, and through the support of our donors, friends and underwriters, WNIT and PBS are once again able to rise up to meet the challenge.

Good health to you and your family and thank you for your generous support in allowing WNIT to help answer the call.



JOIN

KIDS CLUB



Channel 34.1

MONDAY-FRIDAY

6:00 AM Ready Jet Go!
 6:30 AM Arthur
 7:00 AM Curious George
 7:30 AM Nature Cat/Wild Kratts*
 8:00 AM Wild Kratts/Hero Elementary*
 8:30 AM Molly of Denali
 9:00 AM Xavier Riddle
 9:30 AM Let's Go Luna!
 10:00 AM Daniel Tiger
 10:30 AM Daniel Tiger (Fri-Clifford)
 11:00 AM Sesame Street
 11:30 AM Pinkalicious
 Noon Dinosaur Train
 12:30 PM Cat in the Hat
 1:00 PM Sesame Street
 1:30 PM Splash and Bubbles/Pinkalicious*
 2:00 PM Pinkalicious/Hero Elementary*
 2:30 PM Let's Go Luna!
 3:00 PM Nature Cat
 3:30 PM Wild Kratts
 4:00 PM Molly of Denali
 4:30 PM Xavier Riddle (M-F begins 6/1)

(FRI-Friday Fun Zone (May))

5:00 PM Odd Squad

SUNDAY

6:00 AM Mister Rogers
 6:30 AM Dinosaur Train
 7:00 AM Sesame Street
 7:30 AM Daniel Tiger
 8:00 AM Cyberchase/Pinkalicious*
 8:30 AM Biz Kids/Molly of Denali*

*change occurs June 1

Channel 34.2

SATURDAY

6:00 AM Mister Rogers
 6:30 AM Dinosaur Train
 7:00 AM Sesame Street
 7:30 AM Daniel Tiger
 8:00 AM Pinkalicious
 8:30 AM Molly of Denali
 9:00 AM Xavier Riddle
 9:30 AM Let's Go Luna!
 10:00 AM Nature Cat
 10:30 AM Wild Kratts
 11:00 AM Odd Squad
 11:30 AM Arthur
 Noon Ready Jet Go!

SUNDAY

6:00 AM Mister Rogers
 6:30 AM Dinosaur Train
 7:00 AM Sesame Street
 7:30 AM Daniel Tiger
 8:00 AM Pinkalicious
 8:30 AM Molly of Denali
 9:00 AM Xavier Riddle
 9:30 AM Kid Stew
 10:00 AM Nature Cat
 10:30 AM Wild Kratts
 11:00 AM Curiosity Quest
 11:30 AM Into the Outdoors
 Noon SciGirls/Twice is Good*

*change occurs June 1

Happy Birthday

WNIT Kids Club Members!

NAME	AGE
Adelynn Allan	3
Addyson Bauer	7
Lucy Bawtinheimer	5
Rachel Blatt	11
Rowan Blatt	11
Cory Boothe	11
Beckett Geleske	6
Daniel Germano	4
Jason Hall	8
Bryson Henry	8
Caleb Holt	6
Anna Kio	9
Orion Kovach	11
Fiona Kramer	10
Katherine Kuzmic	12
Madison Kuzmic	12
Max Lantz-Geyer	9
Iris Moran Walton	10
Will Schopmeyer	6
Cora Slott	7
Emmett Wells	12

KIDS CLUB

- Subscription to the Planner
- Free or discounted ticket offers for area children's performances
- WNIT Kids Club backpack with PBS® children's items and a book from Better World Books
- Personal pizza from Papa John's
- On-air birthday greeting during their birthday month and listing in the Planner
- Personalized birthday postcard
- Free family admission to the annual WNIT Kids Day in the Park
- ... and more!

\$50 per year
 for all kids or grandkids
 in your immediate family.
 Joining is easy!

CALL 574-675-9648, EXT. 311
 OR GO TO WNIT.ORG.



34.1 Daytime May/June



(Programs subject to change. For the most up to date schedule, visit wnit.org.)

	Monday	Tuesday	Wednesday	Thursday	Friday	Saturday	Sunday
6:00 AM	Ready Jet Go!					Michigan Out of Doors	Mister Rogers
6:30 AM	Arthur					The Best of Joy of Painting	Dinosaur Train
7:00 AM	Curious George					Quilting Arts	Sesame Street
7:30 AM	Nature Cat (May)/Wild Kratts (June)					Fons & Porter	Daniel Tiger
8:00 AM	Wild Kratts (May)/Hero Elementary (June)					Best of Sewing	Cyberchase (May)/ Pinkalicious (June)
8:30 AM	Molly of Denali					Fresh Quilting	Biz Kids (May)/ Molly of Denali (June)
9:00 AM	Xavier Riddle and the Secret Museum					It's Sew Easy	Outdoor Elements
9:30 AM	Let's Go Luna!					Knit and Crochet Now	Experience Michiana
10:00 AM	Daniel Tiger's Neighborhood					Lidia's Kitchen	Inside Indiana Business
10:30 AM	Daniel Tiger's Neighborhood				Clifford the Big Red Dog	Dinner & A Book	
11:00 AM	Sesame Street					Milk Street TV	Off the Record
11:30 AM	Pinkalicious & Peterrific					America's Test Kitchen	Indiana Week in Review
12:00 PM	Dinosaur Train					Cook's Country	Washington Week
12:30 PM	Cat in the Hat					Martha Bakes	Economic Outlook
1:00 PM	Sesame Street					Flavor of Poland	To the Contrary
1:30 PM	Splash and Bubbles (May)/Pinkalicious & Peterrific (June)					Places to Love	Education Counts - Michiana
2:00 PM	Pinkalicious (May)/Hero Elementary (June)					This Old House	Politically Speaking
2:30 PM	Let's Go Luna!					This Old House	American Black Journal
3:00 PM	Nature Cat					American Woodshop	Victoria
3:30 PM	Wild Kratts					Garden Home	
4:00 PM	Molly of Denali					Nature/NOVA	
4:30 PM	Xavier Riddle and the Secret Museum				Friday Fun Zone (May)/ Xavier Riddle (June)		
5:00 PM	Odd Squad					PBS Newshour Weekend	PBS Newshour Weekend
5:30 PM	BBC World News America					Experience Michiana	Under the Radar
6:00 PM	PBS Newshour					Classic Gospel	Antiques Roadshow
6:30 PM							
7:00 PM	Dinner and a Book	Economic Outlook	Education Counts - Michiana	Experience Michiana	Politically Speaking	Lawrence Welk	Father Brown
7:30 PM	Rick Steves' Europe	Rick Steves' Europe	Outdoor Elements/Great Lakes Now	Under the Radar	Overheard with Evan Smith		

May/June Daytime & Weekend Pledge Schedule

Sunday May 3

6:00pm Our Town: Berrien Springs

Sunday May 10

6:00pm Our Town: North Webster

Sunday May 17

6:00pm Our Town: Harbor Country

24

Sunday May 24

6:00pm Our Town: Plymouth

Saturday May 30

7:00am Memory Rescue
 9:00am Longevity Paradox
 11:00am Food as Medicine
 1:00pm 10 Day Belly Slimdownn
 3:00pm Change Your Brain, Heal Your Mind
 5:00pm Suze Orman's Ultimate Retirement Guide

Sunday May 31

4:30pm Rick Steves Fascism in Europe

6:00pm Our Town: Buchanan



34.2 Daytime May/June



(Programs subject to change. For the most up to date schedule, visit wnit.org.)

	Monday	Tuesday	Wednesday	Thursday	Friday	Saturday	Sunday
6:00 AM	Body Electric					Mr. Rogers' Neighborhood	Mister Rogers' Neighborhood
6:30 AM	Classical Stretch					Dinosaur Train	Dinosaur Train
7:00 AM	Happy Yoga	Functional Fitness	Sit and Be Fit	Yoga in Practice	Happy Yoga	Sesame Street	Sesame Street
7:30 AM	Cycle Around Japan	Dining With the Chef	Garden Smart	Best of the Joy of Painting	Daytripper	Daniel Tiger's Neighborhood	Daniel Tiger's Neighborhood
8:00 AM	On Story	Cook's Country	This Old House Hour	Make it Artsy (May)/ Paint This (June)	Trails in Oishii Tokyo	Pinkalicious & Peterrific	Pinkalicious & Peterrific
8:30 AM	On Story	Motorweek		Travels With Darley	Born to Explore(May)/ Woodsmith Shop (June)	Molly of Denali	Molly of Denali
9:00 AM	Amanpour on PBS					Xavier Riddle	Xavier Riddle
9:30 AM						Let's Go Luna!	Kid Stew
10:00 AM	Democracy Now!					Nature Cat	Nature Cat
10:30 AM						Wild Kratts	Wild Kratts
11:00 AM	In the Americas (May)/ Born to Explore (June)	Knit & Crochet	Classical Stretch	Plates & Places	Happy Yoga	Odd Squad	Curiosity Quest
11:30 AM	Daytripper	Pocket Sketching	Yoga in Practice	Lucky Chow	Native Report	Arthur	Into the Outdoors
12:00 PM	Rick Steves' Europe					Ready Jet Go!	SciGirls (May)/Twice is Good (June)
12:30 PM	Journeys in Japan	Life in Bloom	Under the Radar	Milk Street	On Story	Fishing Behind Lines	Outdoor Elements
1:00 PM	Canvassing the World (May)/Passion Italy (June)	This Old House	History Detectives	Jazzy Vegetarian	Song of the Mountains	This Old House	To the Contrary
1:30 PM	Trails to Oishii Tokyo			New Day New Chef		This Old House	Great British Baking Show
2:00 PM	Fly Brother	American Woodshop	Best of the Joy of Painting	Dining With the Chef	Austin City Limits	Ask This Old House	
2:30 PM	Weekends With Yankee	Woodsmith Shop	Paint This	Quick & Easy Food (May)/Neven's Spanish Food Trail (June)		Motorweek	
3:00 PM	Outside: Beyond the Lens	Garden Smart	It's Sew Easy	Cook's Country	State of Music (May)/Sun Studio Sessions (June)	Ask This Old House	Martha Stewart Cooking
3:30 PM	Curious Traveler	Growing A Greener World	Painting & Travel	America's Test Kitchen	Songs at Center	Chef's Life	Chef's Life
4:00 PM	Inside Indiana Business	Family Plot	Painting With Wilson	Ciao Italia	Make48	Great British Baking Show	Great British Baking Show
4:30 PM		Motorweek	Journey Indiana	Martha Bakes	Start Up		
5:00 PM	Politically Speaking/ COVID-19, WNIT (May 4)	Inside Indiana Business	Indiana Week in Review	Farmer & Foodie (May)/ My Greek Table (June)	Backstage Pass	History Detectives	NOVA/Nature
5:30 PM	IN Week in Review		Story in Public Square	New Scandanavian Cooking			
6:00 PM	Newsline					PBS Newshour Weekend	PBS Newshour Weekend
6:30 PM	Nightly Business Report					Firing Line	Washington Week
7:00 PM	PBS Newshour					Antiques Roadshow	Antiques Roadshow
7:30 PM							

***Downton Abbey Marathon* Friday, May 22 - Monday, May 25 from 8:00am - Midnight!**

Saturday June 6

7:00am 10 Day Belly Slimdown
 8:30am Food as Medicine
 11:00am Aging Backwards 3
 12:00pm Change Your Brain, Heal Your Mind
 2:00pm Suze Orman's Ultimate Retirement Guide
 4:00pm Magic Moments: Best of 50s Pop (My Music)
 6:00pm Nat King Cole's Greatest Songs

Sunday June 7

3:00pm Aging Backwards 3
 4:00pm Suze Orman's Ultimate Retirement Guide

Sunday June 14

6:00pm Our Town: Culver

Sunday June 21

6:00pm Our Town: Nappanee

Sunday June 28

6:00pm Our Town: St. Joseph



34.1 Overnight May



(Programs subject to change. For the most up to date schedule, visit wnit.org.)

Special Membership Programming in purple

FRIDAY 1

Midnight This Old House
1:00 am Inside Vatican
3:00 am Nature: Spy in Wild
4:00 am H2O
5:00 am NOVA: Poison Water

SATURDAY 2

Midnight COVID-19 (WNIT)
12:30 am Firing Line
1:00 am Somewhere South
2:00 am Julia Child
3:00 am Inside Vatican
5:00 am This Old House

SUNDAY 3

Midnight Austin City Limits
1:00 am NOVA: Poison Water
2:00 am Nature: Spy in Wild
3:00 am H2O
4:00 am Somewhere South
5:00 am Washington Week
5:30 am Firing Line

MONDAY 4

Midnight Independent Lens
1:30 am Rick Steves Europe
2:00 am Baptiste
3:00 am Somewhere South
4:00 am Julia Child
5:00 am H2O

TUESDAY 5

Midnight Antiques Roadshow
1:00 am George W. Bush: AE
3:00 am Call the Midwife
4:00 am World on Fire
5:00 am Baptiste

WEDNESDAY 6

Midnight Queen at War
1:00 am George W. Bush
3:00 am George W. Bush
5:00 am Antiques Roadshow

THURSDAY 7

Midnight Nature: Spy in Wild
1:00 am H2O
2:00 am Expedition
3:00 am George W. Bush
5:30 am Queen at War

FRIDAY 8

Midnight This Old House
1:00 am College Behind Bars
2:00 am Queen at War
3:00 am Expedition
4:00 am Nature: Spy in Wild
5:00 am H2O

SATURDAY 9

Midnight Washington Week
12:30 am Firing Line
1:00 am Great Performances
2:30 am Symphony for Nature
3:00 am College Behind Bars
4:00 am Queen at War
5:00 am This Old House

SUNDAY 10

Midnight Austin City Limits
1:00 am Nature: Spy in Wild
2:00 am H2O
3:00 am Expedition
4:00 am Queen at War
5:00 am Washington Week
5:30 am Firing Line

MONDAY 11

Midnight Queen at War
1:00 am World on Fire
2:00 am Baptiste
3:00 am Great Performances
4:30 am Symphony for Nature
5:00 am H2O

TUESDAY 12

12:30 am Asian Americans
2:30 am Symphony for Nature
3:00 am Call the Midwife
4:00 am World on Fire
5:00 am Baptiste

WEDNESDAY 13

Midnight Asian Americans
2:00 am Asian Americans
3:00 am Asian Americans
5:30 am Antiques Roadshow

THURSDAY 14

Midnight Nature: Spy in Wild
1:00 am NOVA: Eagle Power
2:00 am Expedition
3:00 am Asian Americans
5:00 am Asian Americans

FRIDAY 15

Midnight This Old House
1:00 am College Behind Bars
2:00 am Asian Americans
3:00 am Expedition
4:00 am Nature: Spy in Wild
5:00 am NOVA: Eagle Power

SATURDAY 16

Midnight Washington Week
12:30 am Firing Line
1:00 am Great Performances
3:00 am Independent Lens
4:30 am Firing Line
5:00 am This Old House

SUNDAY 17

Midnight Ausitn City Limits
1:00 am NOVA: Eagle Power
2:00 am Nature: Spy in Wild
3:00 am Expedition
4:00 am College Behind Bars
5:00 am Washington Week
5:30 am Firing Line

MONDAY 18

Midnight Independent Lens
1:30 am Rick Steves
2:00 am Baptiste
3:00 am Great Performances
5:00 am Expedition

TUESDAY 19

Midnight Amanpour & Co.
1:00 am Clarence Thomas
3:00 am Call the Midwife
4:00 am World on Fire
5:00 am Baptiste

WEDNESDAY 20

Midnight Mr. Tornado: AE
1:00 am NOVA: Tornadoes
2:00 am Frontline
3:00 am Clarence Thomas
5:00 am Antiques Roadshow

THURSDAY 21

Midnight Nature: Spy in Wild
1:00 am NOVA: Notre Dame
2:00 am Expedition
3:00 am Mr. Tornado: AE
4:00 am Clarence Thomas

FRIDAY 22

Midnight This Old House
1:00 am College Behind Bars
2:00 am Mr. Tornado: AE
3:00 am Expedition
4:00 am Nature: Spy in Wild
5:00 am NOVA: Notre Dame

SATURDAY 23

Midnight Washington Week
12:30 am Firing Line
1:00 am Sammy Davis, Jr.: AM
3:00 am Mr. Tornado: AE
4:00 am NOVA: Tornadoes
5:00 am This Old House

SUNDAY 24

Midnight Austin City Limits
1:00 am NOVA: Notre Dame
2:00 am Nature: Spy in Wild
3:00 am Expedition
4:00 am Mr. Tornado: AE
5:00 am Washington Week
5:30 am Firing Line

MONDAY 25

Midnight Secrets of London
1:00 am Rick Steves
1:30 am Sammy Davis, Jr.: AM
3:30 am Memorial Day Concert
5:00 am Expedition

TUESDAY 26

Midnight Amanpour & Co.
1:00 am Antiques Roadshow
2:00 am Memorial Day Concert
3:30 am Sammy Davis, Jr.: AM
5:30 am Emery Blagdon

WEDNESDAY 27

Midnight Amanpur & Co.
12:30 am Finding Your Roots
1:30 am Viral: Antisemitism
3:00 am Frontline
4:00 am Independent Lens
5:00 am Antiques Roadshow

THURSDAY 28

Midnight Nature: Butterflies
1:00 am NOVA: Last B-24
2:00 am Expedition
3:00 am Viral: Antisemitism
4:30 am Emery Blagdon
5:00 am Finding Your Roots

FRIDAY 29

Midnight This Old House
1:00 am College Behind Bars
2:00 am Finding Your Roots
3:00 am Expedition
4:00 am Nature: Butterflies
5:00 am NOVA: Last B-24

SATURDAY 30

12:30 am Washington Week
1:00 am Firing Line
1:30 am Hedy Lamarr: AM
3:00 am Mary Tyler Moore
4:00 am Finding Your Roots
5:00 am This Old House

SUNDAY 31

Midnight TBD
1:00 am NOVA: Last B-24
2:00 am Nature: Butterflies
3:00 am Expedition
4:00 am Independent Lens
5:00 am Washington Week
5:30 am Firing Line

Special Membership Programming in purple

FRIDAY 1

Midnight This Old House
1:00 am Inside Vatican
3:00 am Nature: Spy in Wild
4:00 am H2O
5:00 am NOVA: Poison Water

SATURDAY 2

Midnight Washington Week
12:30 am Firing Line
1:00 am Somewhere South
2:00 am Food. Roots
3:00 am Inside Vatican
5:00 am This Old House

SUNDAY 3

Midnight Bluegrass Underground
12:30 am Chef's Life
1:00 am NOVA: Poison Water
2:00 am Nature: Spy in Wild
3:00 am H2O
4:00 am Somewhere South
5:00 am Washington Week
5:30 am Firing Line

MONDAY 4

Midnight Call the Midwife
1:00 am World on Fire
2:00 am Baptiste
3:00 am Somewhere South
4:00 am Food. Roots
5:00 am H2O

TUESDAY 5

Midnight Antiques Roadshow
1:00 am George W. Bush: AE
3:00 am Call the Midwife
4:00 am World on Fire
5:00 am Baptiste

WEDNESDAY 6

Midnight Queen at War
1:00 am George W. Bush
3:00 am George W. Bush
5:00 am Antiques Roadshow

THURSDAY 7

Midnight Nature: Spy in Wild
1:00 am H2O
2:00 am Expedition
3:00 am George W. Bush
5:30 am Queen at War

FRIDAY 8

Midnight This Old House
1:00 am College Behind Bars
2:00 am Expedition
3:00 am Nature: Spy in Wild
4:00 am H2O
5:00 am Antiques Roadshow

SATURDAY 9

Midnight Washington Week
12:30 am Firing Line
1:00 am Great Performances
2:30 am Symphony for Nature
3:00 am College Behind Bars
4:00 am Queen at War
5:00 am This Old House

SUNDAY 10

Midnight Bluegrass Underground
12:30 am Chef's Life
1:00 am Nature: Spy in Wild
2:00 am H2O
3:00 am Expedition
4:00 am Queen at War
5:00 am Washington Week
5:30 am Firing Line

MONDAY 11

Midnight Call the Midwife
1:00 am World on Fire
2:00 am Baptiste
3:00 am Great Performances
4:30 am Symphony for Nature
5:00 am H2O

TUESDAY 12

Midnight Rick Steves
12:30 am Asian Americans
2:30 am Symphony for Nature
3:00 am Call the Midwife
4:00 am World on Fire
5:00 am Baptiste

WEDNESDAY 13

Midnight Asian Americans
2:00 am Asian Americans
3:00 am Asian Americans
5:30 am Antiques Roadshow

THURSDAY 14

Midnight Nature: Spy in Wild
1:00 am NOVA: Eagle Power
2:00 am Expedition
3:00 am Asian Americans
5:00 am Asian Americans

FRIDAY 15

Midnight This Old House
1:00 am College Behind Bars
2:00 am Asian Americans
3:00 am Expedition
4:00 am Nature: Spy in Wild
5:00 am NOVA: Eagle Power

SATURDAY 16

Midnight Washington Week
12:30 am Firing Line
1:00 am Great Performances
3:00 am Independent Lens
4:30 am Firing Line
5:00 am This Old House

SUNDAY 17

Midnight Bluegrass Underground
12:30 am Chef's Life
1:00 am NOVA: Eagle Power
2:00 am Nature: Spy in Wild
3:00 am Expedition
4:00 am Antiques Roadshow
5:00 am Washington Week
5:30 am Firing Line

MONDAY 18

Midnight Call the Midwife
1:00 am World on Fire
2:00 am Baptiste
3:00 am Great Performances
5:00 am Expedition

TUESDAY 19

Midnight Antiques Roadshow
1:00 am Clarence Thomas
3:00 am Call the Midwife
4:00 am World on Fire
5:00 am Baptiste

WEDNESDAY 20

Midnight Mr. Tornado: AE
1:00 am NOVA: Tornadoes
2:00 am Frontline
3:00 am Clarence Thomas
5:00 am Antiques Roadshow

THURSDAY 21

Midnight Nature: Spy in Wild
1:00 am NOVA: Notre Dame
2:00 am Expedition
3:00 am Clarence Thomas
5:00 am Mr. Tornado: AE

FRIDAY 22

Midnight This Old House
1:00 am College Behind Bars
2:00 am Mr. Tornado: AE
3:00 am Expedition
4:00 am Nature: Spy in Wild
5:00 am NOVA: Notre Dame

SATURDAY 23

Midnight Washington Week
12:30 am Firing Line
1:00 am Sammy Davis, Jr.: AM
3:00 am Mr. Tornado: AE
4:00 am NOVA: Tornadoes
5:00 am This Old House

SUNDAY 24

Midnight Bluegrass Underground
12:30 am Chef's Life
1:00 am NOVA: Notre Dame
2:00 am Nature: Spy in Wild
3:00 am Expedition
4:00 am Mr. Tornado: AE
5:00 am Washington Week
5:30 am Firing Line

MONDAY 25

Midnight Memorial Day Concert
1:30 am Sammy Davis, Jr.: AM
3:30 am Memorial Day Concert
5:00 am Expedition

TUESDAY 26

Midnight Antiques Roadshow
1:00 am Antiques Roadshow
2:00 am Memorial Day Concert
3:30 am Sammy Davis, Jr.: AM
5:30 am Emery Blagdon

WEDNESDAY 27

Midnight Sleep Deprived
12:30 am Finding Your Roots
1:00 am Viral: Antisemitism
3:00 am Frontline
4:00 am Independent Lens
5:00 am Antiques Roadshow

THURSDAY 28

Midnight Nature: Butterflies
1:00 am NOVA: Last B-24
2:00 am Expedition
3:00 am Viral: Antisemitism
4:30 am Emery Blagdon
5:00 am Finding Your Roots

FRIDAY 29

Midnight This Old House
1:00 am College Behind Bars
2:00 am Finding Your Roots
3:00 am Expedition
4:00 am Nature: Butterflies
5:00 am NOVA: Last B-24

SATURDAY 30

Midnight Rick Steves
12:30 am Washington Week
1:00 am Firing Line
1:30 am Hedy Lamarr: AM
3:00 am Mary Tyler Moore
4:00 am Finding Your Roots
5:00 am This Old House

SUNDAY 31

Midnight Bluegrass Underground
12:30 am Chef's Life
1:00 am NOVA: Last B-24
2:00 am Nature: Butterflies
3:00 am Expedition
4:00 am Independent Lens
5:00 am Washington Week
5:30 am Firing Line



34.1 Overnight June



(Programs subject to change. For the most up to date schedule, visit wnit.org.)

Special Membership Programming in purple

MONDAY 1

Midnight Suze Orman
 1:00 am Tunnel
 2:00 am Tunnel
 3:00 am Hedy Lamarr: AM
 4:30 am Mary Tyler Moore
 5:30 am Emery Blagdon

TUESDAY 2

Midnight Food as Medicine
 12:30 am Rick Steves
 1:30 am Independent Lens
 3:00 am Tunnel
 4:00 am Tunnel
 5:00 am Tunnel

WEDNESDAY 3

Midnight Brain Secrets
 1:00 am Food as Medicine
 2:30 am Rick Steves
 3:00 am Symphony For Nature
 3:30 am Independent Lens
 5:00 am Antiques Roadshow

THURSDAY 4

Midnight Suze Orman
 12:30 am Longevity Paradox
 2:00 am WWII Weapons
 3:00 am Queen Elisabeth
 4:00 am Queen Elisabeth
 5:00 am Queen Elisabeth

FRIDAY 5

Midnight 3 Steps to Health
 1:30 am Rick Steves
 2:00 am Queen Elisabeth
 3:00 am Operation Maneater
 4:00 am WWII Weapons
 5:00 am NOVA: Cathedral

SATURDAY 6

Midnight Memory Rescue
 12:30 am Aging Backwards 3
 2:00 am Lincoln Center
 4:00 am Queen Elisabeth
 5:00 am This Old House

SUNDAY 7

Midnight INXS: Live Baby Live
 1:30 am Rick Steves
 2:00 am Operation Maneater
 3:00 am WWII Weapons
 4:00 am Queen Elisabeth
 5:00 am Washington Week
 5:30 am Firing Line

MONDAY 8

Midnight Longevity Paradox
 1:00 am Tunnel
 2:00 am Tunnel
 3:00 am Lincoln Center
 5:30 am Symphony For Nature

TUESDAY 9

Midnight Amanpour & Co.
 1:00 am Rick Steves
 1:30 am Independent Lens
 3:00 am Tunnel
 4:00 am Tunnel
 5:00 am Tunnel

WEDNESDAY 10

Midnight Amanpour & Co.
 1:00 am Stonewall Uprising: AE
 2:30 am Antiques Roadshow
 3:00 am Independent Lens
 4:30 am Antiques Roadshow
 5:30 am Antiques Roadshow

THURSDAY 11

Midnight Operation Maneater
 1:00 am NOVA: Stonehenge
 2:00 am WWII Weapons
 3:00 am Stonewall Uprising: AE
 4:30 am Antiques Roadshow
 5:00 am Secrets of the Dead

FRIDAY 12

Midnight This Old House
 1:00 am National Parks
 3:00 am Operation Maneater
 4:00 am WWII Weapons
 5:00 am NOVA: Stonehenge

SATURDAY 13

Midnight Washington Week
 12:30 am Firing Line
 1:00 am Out Loud
 2:00 am Lavender Scare
 3:00 am Stonewall Uprising: AE
 4:30 am Antiques Roadshow
 5:00 am This Old House

SUNDAY 14

Midnight Austin City Limits
 1:00 am NOVA: Stonehenge
 2:00 am Operation Maneater
 3:00 am WWII Weapons
 4:00 am Secrets of the Dead
 5:00 am Washington Week
 5:30 am Firing Line

MONDAY 15

Midnight Independent Lens
 1:30 am Rick Steves
 2:00 am Beecham House
 3:00 am Out Loud
 4:00 am Lavender Scare
 5:00 am Secrets of the Dead

TUESDAY 16

Midnight Amanpour & Co.
 12:30 am Antiques Roadshow
 1:30 am Antiques Roadshow
 2:30 am Prince Albert
 3:30 am Grantchester: S5
 4:30 am Beecham House
 5:30 am Antiques Roadshow

WEDNESDAY 17

Midnight Mae West: AM
 1:30 am Antiques Roadshow
 2:00 am Frontline
 3:00 am Independent Lens
 4:30 am Antiques Roadshow
 5:00 am Antiques Roadshow

THURSDAY 18

Midnight Spy in the Wild
 1:00 am NOVA: Australia
 2:00 am Prehistoric Roadtrip
 3:00 am Antiques Roadshow
 4:00 am Mae West: AM
 5:30 am Antiques Roadshow

FRIDAY 19

Midnight Rick Steves
 12:30 am This Old House
 1:30 am National Parks
 4:00 am Spy in the Wild
 5:00 am NOVA: Australia

SATURDAY 20

Midnight Washington Week
 12:30 am Firing Line
 1:00 am Great Performances
 3:00 am Mae West: AM
 4:30 am Antiques Roadshow
 5:00 am This Old House

SUNDAY 21

Midnight Austin City Limits
 1:00 am NOVA: Australia
 2:00 am Spy in the Wild
 3:00 am Prehistoric Roadtrip
 4:00 am Antiques Roadshow
 5:00 am Washington Week
 5:00 am Firing Line

MONDAY 22

Midnight Independent Lens
 1:30 am Rick Steves
 2:00 am Beecham House
 3:00 am Great Performances
 5:00 am Prehistoric Roadtrip

TUESDAY 23

Midnight Amanpour & Co.
 12:30 am Rick Steves
 1:00 am Antiques Roadshow
 2:00 am Independent Lens
 3:00 am Lucy Worsley
 4:00 am Grantchester: S5
 5:00 am Beecham House

WEDNESDAY 24

Midnight Toni Morrison: AM
 2:00 am Frontline
 3:00 am Prehistoric Roadtrip
 4:00 am Independent Lens
 5:00 am Antique Roadshow

THURSDAY 25

Midnight Spy in the Wild
 1:00 am NOVA: Australia
 2:00 am Prehistoric Roadtrip
 3:00 am Antiques Roadshow
 4:00 am Toni Morrison: AM

FRIDAY 26

Midnight This Old House
 1:00 am National Parks
 3:00 am Prehistoric Roadtrip
 4:00 am Spy in the Wild
 5:30 am NOVA: Australia

SATURDAY 27

Midnight Washington Week
 12:30 am Firing Line
 1:00 am Great Performances
 3:00 am Toni Morrison: AM
 5:00 am This Old House

SUNDAY 28

Midnight Austin City Limits
 1:00 am NOVA: Australia
 2:00 am Spy in the Wild
 3:00 am Prehistoric Roadtrip
 4:00 am Antiques Roadshow
 5:00 am Washington Week
 5:30 am Firing Line

MONDAY 29

Midnight Independent Lens
 1:00 am Grantchester: S5
 2:00 am Beecham House
 3:00 am Great Performances
 5:00 am Prehistoric Roadtrip

TUESDAY 30

Midnight Antiques Roadshow
 1:00 am POV
 3:00 am Lucy Worsley
 4:00 am Grantchester: S5
 5:00 am Beecham House

Special Membership Programming in purple

MONDAY 1

Midnight Tunnel
1:00 am Tunnel
2:00 am Tunnel
3:00 am Hedy Lamarr: AM
4:30 am Mary Tyler Moore
5:30 am Emery Blagdon

TUESDAY 2

Midnight PBS NewsHour
12:30 am Antiques Roadshow
1:30 am Independent Lens
3:00 am Tunnel
4:00 am Tunnel
5:00 am Tunnel

WEDNESDAY 3

Midnight Queen Elisabeth
1:00 am Queen Elisabeth
2:00 am Queen Elisabeth
3:00 am Symphony For Nature
3:30 am Independent Lens
5:00 am Antiques Roadshow

THURSDAY 4

Midnight Operation Maneater
1:00 am NOVA: Cathedral
2:00 am WWII Weapons
3:00 am Queen Elisabeth
4:00 am Queen Elisabeth
5:00 am Queen Elisabeth

FRIDAY 5

Midnight This Old House
1:00 am 10 Towns
2:00 am Queen Elisabeth
3:00 am Operation Maneater
4:00 am WWII Weapons
5:00 am NOVA: Cathedral

SATURDAY 6

Midnight Rick Steves
12:30 am Washington Week
1:00 am Firing Line
2:00 am Lincoln Center
4:00 am Queen Elisabeth
5:00 am This Old House

SUNDAY 7

Midnight Bluegrass Underground
12:30 am Chef's Life
1:00 am NOVA: Cathedral
2:00 am Operation Maneater
3:00 am WWII Weapons
4:00 am Queen Elisabeth
5:00 am Washington Week
5:30 am Firing Line

MONDAY 8

Midnight Tunnel
1:00 am Tunnel
2:00 am Tunnel
3:00 am Lincoln Center
5:30 am Symphony For Nature

TUESDAY 9

Midnight PBS NewsHour
12:30 am Antiques Roadshow
1:30 am Independent Lens
3:00 am Tunnel
4:00 am Tunnel
5:00 am Tunnel

WEDNESDAY 10

Midnight Secrets of the Dead
1:00 am Stonewall Uprising: AE
2:30 am Antiques Roadshow
3:00 am Independent Lens
4:30 am Antiques Roadshow
5:30 am Antiques Roadshow

THURSDAY 11

Midnight Operation Maneater
1:00 am NOVA: Stonehenge
2:00 am WWII Weapons
3:00 am Stonewall Uprising: AE
4:30 am Antiques Roadshow
5:00 am Secrets of the Dead

FRIDAY 12

Midnight This Old House
1:00 am National Parks
3:00 am Operation Maneater
4:00 am WWII Weapons
5:00 am NOVA: Stonehenge

SATURDAY 13

Midnight Washington Week
12:30 am Firing Line
1:00 am Out Loud
2:00 am Lavender Scare
3:00 am Stonewall Uprising: AE
4:30 am Antiques Roadshow
5:00 am This Old House

SUNDAY 14

Midnight Bluegrass Underground
12:30 am Chef's Life
1:00 am NOVA: Stonehenge
2:00 am Operation Maneater
3:00 am WWII Weapons
4:00 am Secrets of the Dead
5:00 am Washington Week
5:30 am Firing Line

MONDAY 15

Midnight Prince Albert
1:00 am Grantchester: S5
2:00 am Beecham House
3:00 am Out Loud
4:00 am Lavender Scare
5:00 am Secrets of the Dead

TUESDAY 16

Midnight PBS NewsHour
12:30 am Antiques Roadshow
1:30 am Antiques Roadshow
2:30 am Prince Albert
3:30 am Grantchester: S5
4:30 am Beecham House
5:30 am Antiques Roadshow

WEDNESDAY 17

Midnight Mae West: AM
1:30 am Antiques Roadshow
2:00 am Frontline
3:00 am Independent Lens
4:30 am Antiques Roadshow
5:00 am Antiques Roadshow

THURSDAY 18

Midnight Spy in the Wild
1:00 am NOVA: Australia
2:00 am Prehistoric Roadtrip
3:00 am Antiques Roadshow
4:00 am Mae West: AM
5:30 am Antiques Roadshow

FRIDAY 19

Midnight Rick Steves
12:30 am This Old House
1:30 am National Parks
4:00 am Spy in the Wild
5:00 am NOVA: Australia

SATURDAY 20

Midnight Washington Week
12:30 am Firing Line
1:00 am Great Performances
3:00 am Mae West: AM
4:30 am Antiques Roadshow
5:00 am This Old House

SUNDAY 21

Midnight Bluegrass Underground
12:30 am Chef's Life
1:00 am NOVA: Australia
2:00 am WWII Weapons
3:00 am Prehistoric Roadtrip
4:00 am Antiques Roadshow
5:00 am Washington Week
5:00 am Firing Line

MONDAY 22

Midnight Lucy Worsley
1:00 am Grantchester: S5
2:00 am Beecham House
3:00 am Great Performances
5:00 am Prehistoric Roadtrip

TUESDAY 23

Midnight Antiques Roadshow
1:00 am Antiques Roadshow
2:00 am Independent Lens
3:00 am Lucy Worsley
4:00 am Grantchester: S5
5:00 am Beecham House

WEDNESDAY 24

Midnight Toni Morrison: AM
2:00 am Frontline
3:00 am Prehistoric Roadtrip
4:00 am Independent Lens
5:00 am Antiques Roadshow

THURSDAY 25

Midnight Spy in the Wild
1:00 am NOVA: Australia
2:00 am Prehistoric Roadtrip
3:00 am Antiques Roadshow
4:00 am Toni Morrison: AM

FRIDAY 26

Midnight This Old House
1:00 am National Parks
3:00 am Prehistoric Roadtrip
4:00 am Spy in the Wild
5:30 am NOVA: Australia

SATURDAY 27

Midnight Washington Week
12:30 am Firing Line
1:00 am Great Performances
3:00 am Toni Morrison: AM
5:00 am This Old House

SUNDAY 28

Midnight Bluegrass Underground
12:30 am Chef's Life
1:00 am NOVA: Australia
2:00 am Spy in the Wild
3:00 am Prehistoric Roadtrip
4:00 am Antiques Roadshow
5:00 am Washington Week
5:30 am Firing Line

MONDAY 29

Midnight Lucy Worsley
1:00 am Grantchester: S5
2:00 am Beecham House
3:00 am Great Performances
5:00 am Prehistoric Roadtrip

TUESDAY 30

Midnight Antiques Roadshow
1:00 am POV
3:00 am Lucy Worsley
4:00 am Grantchester: S5
5:00 am Beecham House

Supporter Spotlight

Jeff Rea



It is with great pleasure that WNIT recognizes Jeff Rea, host of *Economic Outlook* and Directors' Circle member. Jeff is a big fan of our local programming as he believes it helps spur growth in our communities and build cooperation across the region.

Jeff got his start in Mishawaka working for his family's business, the Tribe-O-Rea before joining the City of Mishawaka where he ultimately became Mayor. He oversaw projects such as the demolition of the Uniroyal plant, the construction of the H2 Plant, and the development of the Riverwalk. For the past nine years, he has headed the South Bend Regional Chamber of Commerce, where they focus on economic development, business advocacy, and destination marketing. Outside of work, Jeff has been closely involved with The Res in Mishawaka and the Boys and Girls Club.

Jeff remarks that "our community has challenges, like everyone else, but we also have some tremendous advantages. We have a population that cares deeply about the area and the communities they call home. That population is very generous and at the same time fiercely advocates for our area."

WNIT is grateful to have individuals like Jeff dedicated to our mission and our community.

Honor Roll Members

WNIT would like to recognize the following Honor Roll Members for their loyal support!

35 YEARS

William and Linda Meyer
Larry Portolese

30 YEARS

Kathy and David Baldwin
Nancy S Clark
Martha and Larry Johnson
Kirsten Klassen
Thomas Kselman
Rosealene Long
James and Sylvia Miller
Lester Olmstead
Kathy and Thomas Platt
Dr. and Mrs. Bill Sarnat
Mr. and Mrs. William J. Schmuhl, Jr.
Linda and Thomas Stump
James and Linda Trader
Melvin and Marilyn Voran

25 YEARS

James and Kay Acheson
John and Jackie Baker
Elizabeth Chew
Thomas and Elizabeth Eisele
John Farrell
John Haizlip
Raymond and Elizabeth L Haluda
Nancy Heminger
Linda Jacobs
Richard and Sandra Judd
Deborah Longworth and Nicholas Timm
Gary McCormick
Mike and Jane Mulligan

Jerry and Mary Nurenberg
Donna Potter
Charlotte and Kenneth Ronske
Constance Saltzgaber
Joan H Verwilt
Stan and June Yoder

20 YEARS

Marijke Brown
Elizabeth Cotter
Marilyn S Graber
Joan and Oliver Griffith
Sandra Hostetler
Patricia Klapchuk
Suzanne and John Kleinmanns
Eric and Janet Leedy
Robert and Nancy Lute
Mark Rzepnicki
Peter and Raejene Shaffer
Jane Ellen Smith
Jim and Carol Streator
Mr John Tomlonson
Betsy Vanderburg

15 YEARS

Nancy Beadles
Sue Byler
G Dewayne Sr and Janice Creighton
Gail Hackensmith
Mickey Sipress
Roy Tepe
Cynthia Wendzonka

10 YEARS

Mary Batdorf
Jack Benchik
Scott Berkey
Anita and Stan Blom
Darlene Celmer
Roger Defaw
Margaret Farmer
Melissa Freer-Smith
Greg and Mary Beth Gicz
Gerald R and Margaret A Gloster
John B Harlan
Barbara Hassan
Diana Hoffman
Ellen Hummel
Barbara J Jung
Michael and Wendy Kauffman
Adele Kemp
Jacqueline Kinsman
Mr and Mrs Kenneth Koerber
Dale Leckrone
David Lee
Patrick and Carla McCarty
Juanita A and Leon Nafziger
Jan E Nunemaker
Linda and James Rider
Doug and Sharon Risser
Charles Rizzo
James Shearer
Cheryl Snay
Ruth Sriver
Mark Wait

5 YEARS

Theodore Anderson
Joan Arnold
Gloria Ballard
Dan Balog
Mattie Beaudoin
William and Linda Becker
Tom Beers
Ann Benson
Jay and Mary Fran Brandenberger
Constance Buckley
Linda K Byer
Hsueh-Chia Chang
Mark Cipov
Margaret Cormican
Richard and Patricia Cowper
Yvonne De Muyt
Rhonda F De Vreese
Linda C Deaton
Mark and Hillary Doerries
Nancy Eckelbarger
Darlene Mathis Eddy
Margaret Emmons
Gary Erhard
Josephine Frushour
Mary Gibbs
Samuel Hahn
Lowell and Judy Hamel
Nancy Harkey
Meg and Chris Hartz
Janet Holderbaum
Janice Ivkovich
Carole Jaynes
Leonard Kancuzewski
Judith A Kauchak
Anne and Earl Knuth
Jennifer Lape

Kate Mannor
Phillip Marshall
Annie Mathews
Jim and Lori Miller
Juanita Miller
Sue Monaghan
Nancy and John Morgan
Susan Moriarty
Bruce Morrow
Amy L Nelson
Jeanie Nickelson
Terri Noonan
Liz Nowaczewski
Mary Olen
Thomas R Osmer
J Wayne and Lori Parsons
Jackie S Persing
Peterson Media
Jeanette Phillips
Bill Price
Father H G Randolph Jr
Wendy Clauson Schlereth
Joseph and Ann Schopmeyer
Sandy Sherburn
Joanne Snow
Gwen Swanson
Katherine Taylor
Sharon Teska
Cindy and John Vanderwerf
Jan Versaw
Eliud Villanueva
Becky Webb
Leon'a Wilson-Mann
Marie Witt
Bernard Worden
Edwin and Jane Yochum
Darrel Yoder

Directors' Circle

The WNIT Directors' Circle represents a very dedicated and select group of individuals who, by their commitment, contribute to the total annual support which is the foundation of WNIT's operating budget. These essential annual contributions make possible the great programs that everyone in Michiana enjoys.

Diamond Level (\$10,000 +)

Estate of Jack and Shirley Appleton
Jodie Cocquyt**
Arthur J. Decio
The Garcia Family Charitable Foundation
Don and Joan Lyons
Craig D. Sullivan and Cynthia L. Harris
Ernestine M. Raclin
Robby and Pamela Rask
James F. Shea
Sonny and Dee Tepe

Platinum Level (\$5,000 +)

Howard and Marie Goodhew Fund
of the Community Foundation
of St. Joseph County
Mrs. Sue Hiler
Leonard Isban
Chris and Carmi Murphy
Pat and Sue Ruszkowski
Gerald H. Shaffer
Welter Foundation

Gold Level (\$2,500 +)

Anonymous (1)
Billie and David Bankoff
Katy and Tim Demarais
Mr and Mrs Robert Elick
Timothy and Katherine Fulnecky
The Frank Family Fund of the Community
Foundation of St. Joseph County
Ralph Komaskinski and
Katherine Humphreys
Glenn and Patty Killoren
Michael and Karen Leep
Sara and Abraham Marcus
Perry and Ida Reynolds Watson III
Susan Ohmer and Donald Crafton
Jeff and RaelLee Rea
Lorrie and Bill Schmuhl
Cari and Barry Shein
Thomas F. and Anita J. Veldman
Gerda Zeller

Silver Level (\$1,000 +)

Anonymous (3)
Dr. James and Carolyn Barnes
Rick Beckermeyer
Jo Ann and Joe Blazek
James and June Blue
Julie and Thomas Brenner
Edward Carrico
Jack and Karen Cittadine
Barbara Clausen
Marianne Corr
The Cressy Foundation
Ann and Fred Dean
Barbara Dillon
Fred and Mary Jane Ferlic
Susan and David Findlay

Tom and Susan Fischbach
Roger and Joyce Foley Fund of
the Community Foundation
of St. Joseph County
Stephen and Barbara Fredman
Jody and Mike Freid
Mrs. L. Craig Fulmer
Rodney and Carol Ganey
Van and Jean Gates
Gates Fund of the Community
Foundation of St. Joseph County
Dave and Ginny Gibson
Mary Beth and Greg Giczi
William and Leslie Gitlin
Michael and Karen Harmon
Steven and Ann Herendeen
Anne Hillman
James and Jill Hillman
Mary Suzanne Horan
James W. and Sally F. Hubbard
Dr. and Mrs. Tom Hughes
Marijo and Kevin Kelly
Michael and Rebecca Kubacki
Richard Lamanna
Drs. Gail English and Nels Leininger
Mr. and Mrs. Philip Lux
Paul and Jessica Maich
Chris Maziar
Dr. Debra and Rodney McClain
Judith McDowell
Chris Miller
Jane K. Miller
Dr. and Mrs. Brian Moloney
Sue Neeb
Neil and Diane Orians
Steven and Pam Perlewitz
Barb and John Phair
Michael and Amy Phend
Dr. Yupadi Prasertwanitch
Donna and Mark Richter
The Honorable and Mrs.
James W. Rieckhoff
Judith Robert and Thomas J. Kapacinskas
June Rollinger
Steve and Connie Rufenbarger
The Paul Saltzgaber Memorial Fund
for Reading, Writing and the Arts
Nancy and Richard Saunders
Tom and Maria Slager
James F. and Sherry L. Smith
Eve Sobol
William and Jennifer Squiers
Carolyn Stacik
Richard Stoldt and Deborah Martin-Stoldt
Perry Stow and Andrea Mather-Stow
Kimberley D. Sundy
Mike and Dena Wargo
Peggy Weed
Patrick and Jeannie Welch
Michael and Julie Yates
Douglas and Janette Yoder

Bronze Level (\$500 +)

Eric and Sandy Amt
Louise and Stephen Anella
Anonymous (7)
Dottie and Tom Arnold
James and Lauren Arnold
Stephen and Nancy Ball (Pathfinders
Advertising & Marketing Group, Inc.)
Bruce and Linda Bancroft
Stuart and Paula Barb
In Memory of Adam Barker
Reginald F. Bain
Robert and Pam Beam
Kathy Malone Beeler
Richard and Suzanne Belcher
Tania Bengtsson
John and Denise Berscheit
George Beutter
Carolyn Bieneman
Hayley Boling
Elizabeth Naquin Borger
Brian and Kelly Bowen
Brian and Jeannelle Brady
George and Martha Buckingham
Peter and Chasten Buttigieg
Geoff and Kathie Church
Peg Claeys
Julia A. Crume
Monali Das
Richard and Jean Dennen
Tim Dennig
Mary Pat and Robert Deputy
Ann and Paul Divine
Robin and Lisa Douglass
Greg and Mary Downes
Joel and Amy Duthie
Marcia Eichhorn
Thomas and Elizabeth Eisele
Ken and Mary Eme
John Van Engen
Jill and Chris Erb
Joan and Lyndal Fox
George and Kathy Freese
Betsy Fulnecky
Steven and Susan Funk
Nancy and Terry Gerber
Maggie and Steve Goldberg
Margie and Paul Goldwin
Lynn Groenleer
Lowell and Judy Hamel
Janice and Larry Harding
Edward and Joan Hardig
Sharee and Frank Hartman
Charles S. Hayes
Dan Hektor and Tela Schulman-Hektor
Paul and Christie Helquist
Mary Lou and Branson E. Hiatt
Jane Hoffman
Michael and Janice Imgrund
Robert and Judith Jochem
Carol and Craig Kapson

Rowan Kelley and Amanda Miller Kelley
James and Christine Kelly
Joe and Maggie Kernan
Dean Kimble
Barbara and Donald T. Kindt
William and Julia Knight
Brian and Ginger Lake
Betty Laramore
Gunnel Lofgren
Arlene Mark
William A. Mashke
Ron and Dolores McDonald
Laurence and Barbara McHugh
Joann and Brian McMahon
Stephen and Connie McTigue
Tom and Shari Mellin
Max and Lydia Mertz
Brad and Mickey Miller
Jeffrey Miller
Pat and Carol Moody
Kevin and Anita Morrison
Mary Naquin
Mark and Kathleen Neal
James O'Rourke
Tony Fitts and Ramona Payne
Michael and Susan Pound
Marjorie Riemenschneider
Charles Rizzo
Rachel Ridley
Maritza Robles**
Fred and Chris Rowe
David and Mitzi Sabato
Dr. William and Diane Sarnat
Judy and Bob Schmuhl
James and Patricia Short
Carl Snyder and Rita Schobert Snyder
Oliver C. Songlingco, M.D., P.C.
Tom and Joyce Sopko
Ellyn Stecker and Peter Smith
Joyce and Richard Stifel
Rebecca Stoltzfus
Lawrence Szymanski
Susan Vanek
Thom and Jeannine Villing
Barbara Warner
Charles and Mary Weber
Phid and Jeff Wells
Dorothy and Dar Wiekamp*
Barbara Williams
Barbara Wind
Jody Wiseman
Nancy Wutrich
Nancy C. Yob
John D. and Carol Zeglis

*Deceased Charter Director

** Deceased

wnit Supporters

Information correct as of
press date. For a full listing
of program sponsors, please
contact WNIT.

1st Source Bank

Antiques Roadshow
Austin City Limits
Black History Month 2020
Great Performances
Holiday Programming
Inside INdiana Business
Ken Burns: Country Music
Legends: Richmond &
Virginia Calvin
NOVA
PBS NewsHour
Prime Time Programming

32 Pearls Family Dentistry

Children's Programming

African American Community Fund

Legends: Richmond &
Virginia Calvin

Dr. Pavan Ahuja

The Elkhart Health and
Aquatics Center

AJ's Uptown Bar & Grill

Our Town: Berrien Springs

Aladdin's Eatery

Masterpiece: Downton
Abbey
Miscellaneous
Programming

Alford's Mortuary, Inc.

Legends: Richmond &
Virginia Calvin

Alick's Home Medical

Antiques Roadshow
Black History Month 2020
The Elkhart Health and
Aquatics Center
Ken Burns: Country Music
Lawrence Welk
Legends: Richmond &
Virginia Calvin
Legends: Pat Moody
Masterpiece: Victoria
Miscellaneous
Programming

Jeannine Alick & Nafe Alick

The Elkhart Health and
Aquatics Center

Allred Funeral Home

Our Town: Berrien Springs

Alpha Kappa Alpha

Black History Month 2020
Legends: Richmond &
Virginia Calvin

American Family Insurance

Legends: Richmond &
Virginia Calvin

American Theatre Guild

Prime Time Programming

Anderson, Agostino & Keller P.C.

Black History Month 2020
Legends: Richmond &
Virginia Calvin
Studebaker Fountain: A
Gift of Water and Light
Summer of Space

Andrews University

Our Town: Berrien Springs

Andy J. Egan Co., Inc.

Legends: Pat Moody

Drs. Zoreen and Rafat Ansari/ Ansari Charitable Foundation

Children's Programming
Studebaker Fountain: A
Gift of Water and Light

Dottie and Tom Arnold

The Elkhart Health and
Aquatics Center

Art Barn

Miscellaneous
Programming

MarySue and Terry Austin

Legends: Richmond &
Virginia Calvin

Billie and David Bankoff

Studebaker Fountain: A
Gift of Water and Light

Sy and Cheryl Barker

Legends: Richmond &
Virginia Calvin

Barnes & Thornburg, LLP

Business Programming

Rob Bartels

Studebaker Fountain: A
Gift of Water and Light

Marzy and Joe Bauer

Legends: Richmond &
Virginia Calvin

Beacon Health System

Legends: Richmond &
Virginia Calvin

Berrien County Youth Fair

Our Town: Berrien Springs

Berrien Metal Products, Inc.

Our Town: Buchanan

Berrien Springs Public Schools

Our Town: Berrien Springs

Better World Books

Children's Programming

Big C Lumber

Ken Burns: Country Music
Studebaker Fountain: A
Gift of Water and Light

Bixby Farms

Our Town: Berrien Springs

JoAnn and Joe Blazek

Studebaker Fountain: A
Gift of Water and Light

Carlos and Erin Bolden

Legends: Richmond &
Virginia Calvin

Marques Bolden

Legends: Richmond &
Virginia Calvin

Kristy and Walter Botich

Studebaker Fountain: A
Gift of Water and Light

Loretha Buchanon

Legends: Richmond &
Virginia Calvin

Mr. David and Dr. Larissa Buggs

Legends: Richmond &
Virginia Calvin

Anthony and Kathy Byrd

Legends: Richmond &
Virginia Calvin

C 2 Your Health LLC

Miscellaneous
Programming

CTE Solutions

Our Town: Plymouth

Barb and Paul Campbell

The Elkhart Health and
Aquatics Center

Career Analysis Organization of America

Miscellaneous
Programming

Carmela's at Macri's

Miscellaneous
Programming

Nancy and Bruce Carter

The Elkhart Health and
Aquatics Center

Center for the Homeless

Miscellaneous
Programming

Central County Senior Center

Our Town: Berrien Springs

Century Builders

Studebaker Fountain: A
Gift of Water and Light

Paul Cholis

Studebaker Fountain: A
Gift of Water and Light

City of South Bend - Mayor

James Mueller
Black History Month 2020
Legends: Richmond &
Virginia Calvin

Coastline Realty Group

Our Town: Berrien Springs

Cobb Funeral Home

Legends: Richmond &
Virginia Calvin

Sean Coleman

Legends: Richmond &
Virginia Calvin

Community Foundation of St Joseph County

Arts Programming
Experience Michiana

Cornerstone Alliance

Legends: Pat Moody

T. H. Corson

The Elkhart Health and
Aquatics Center

Cosimo & Susie's A Bit of Italy

Miscellaneous
Programming

Cripe Design, LLC

The Elkhart Health and
Aquatics Center

Crowe, LLP

Studebaker Fountain: A
Gift of Water and Light

Cruises International

Our Town: Berrien Springs

Crystal Springs Florist & Garden Center

Legends: Pat Moody

Nancy and Tom Curtis

Studebaker Fountain: A
Gift of Water and Light

D & W, Inc.

Business Programming

Dave Carter & Associates

The Elkhart Health and
Aquatics Center

Shalon "Shay" Davis

Legends: Richmond &
Virginia Calvin

Ann and Fred Dean

Studebaker Fountain: A
Gift of Water and Light

DeBartolo Performing Arts Center/Browning Cinema

American Experience
American Masters
Frontline
Great Performances
Live from Lincoln Center
Miscellaneous
Programming
PBS NewsHour

Deb Childs State Farm Insurance

Black History Month 2020

Debbie Werbrouck School of Dance

Children's Programming

Arthur J. Decio

Sesame Street

Delta Dental

Children's Programming

Mary Pat and Robert Deputy

The Elkhart Health and
Aquatics Center

Direct Rug Import

Masterpiece: Victoria

Dometic Corporation

The Elkhart Health and
Aquatics Center

Ian and Barbara Duncanson

Legends: Richmond &
Virginia Calvin

Early Childhood Alliance

Miscellaneous
Programming

Early Childhood Development Center, Inc.

Children's Programming

Edgewater Automation

Legends: Pat Moody

Edgewater Bank

Legends: Pat Moody

Electronics Inc.

Studebaker Fountain: A
Gift of Water and Light

Elkhart Child Development Center

Black History Month 2020

Elkhart Health and Aquatics Center

Elkhart Civic Theater

Miscellaneous
Programming

Elkhart Clinic LLC

The Elkhart Health and
Aquatics Center

Elkhart Community Schools

The Elkhart Health and
Aquatics Center

Elkhart County Symphony

Miscellaneous
Programming

Rosalind Ellis and James Husband

Legends: Richmond &
Virginia Calvin

Fairhaven Obstetrics & Gynecology

Call the Midwife Holiday
Special

Family Dental Health

Miscellaneous
Programming

Mike and Nancy Feltman

Studebaker Fountain: A
Gift of Water and Light

David and Susan Findlay

Legends: Richmond &
Virginia Calvin

**First Federal Savings Bank of
Plymouth**

Our Town: Plymouth

Fischhoff National Chamber**Music Association**

Miscellaneous
Programming

Joyce and Roger Foley

Legends: Richmond &
Virginia Calvin

Studebaker Fountain: A
Gift of Water and Light

Bob and Loretta Frank

Legends: Richmond &
Virginia Calvin

Barb and Steve Fredman

Legends: Richmond &
Virginia Calvin

Studebaker Fountain: A
Gift of Water and Light

Jody and Michael Freid

Legends: Richmond &
Virginia Calvin

Friends Early Learning Center

Children's Programming

Gait, LLC

Miscellaneous
Programming

Gallery on the Alley

Legends: Pat Moody

Andre B. Gammage

Legends: Richmond &
Virginia Calvin

Gibson

Antiques Roadshow
BBC World News
Children's Programming
Nature
NOVA
PBS NewsHour

Debra and Gary Gilot

Legends: Richmond &
Virginia Calvin

Girls on the Run

Miscellaneous
Programming

Steven A. Goldberg, CPA

Black History Month 2020
Legends: Richmond &
Virginia Calvin
Miscellaneous
Programming
Washington Week

Judith and Jim Goodkin

Legends: Richmond &
Virginia Calvin

Goodwill Industries

Miscellaneous
Programming

Goshen Birth Center

Call the Midwife Holiday
Special

Goshen Buick GMC Hyundai

Holiday Programming
Indiana High School State
Band Finals

Great Lakes Eye Care

Our Town: Berrien Springs

Growing Kids Learning Center

Children's Programming

**Alfred Guillaume and Melanie
Smith-Guillaume**

Legends: Richmond &
Virginia Calvin

Gurley Leep Automotive Family

Legends: Richmond &
Virginia Calvin

Studebaker Fountain: A
Gift of Water and Light

Gymnastics Michiana

Children's Programming

Mel Hall

Legends: Richmond &
Virginia Calvin

Studebaker Fountain: A
Gift of Water and Light

Hanson Group

Legends: Pat Moody

HarborTown Interiors, LLC

Legends: Pat Moody

Hayes Towers

Children's Programming
Studebaker Fountain: A
Gift of Water and Light

Hearth & Home

Home Improvement
Programming

Carol and Brian Hedman

Legends: Richmond &
Virginia Calvin

Hildebrand Fruit Farms

Our Town: Berrien Springs

Anne Hillman

Studebaker Fountain: A
Gift of Water and Light

Holt Bosse

Legends: Pat Moody

Holy Cross College

Black History Month 2020

**Holy Cross Village at Notre
Dame**

Miscellaneous
Programming

Studebaker Fountain: A
Gift of Water and Light

Homan Lumber Mart

Ask This Old House
The Elkhart Health and
Aquatics Center

Honor Credit Union

Our Town: Berrien Springs

Horizon Bank

Black History Month 2020
Studebaker Fountain: A
Gift of Water and Light

Hovenkamp's Produce

Children's Programming
Cooking Programming

Howard Performing Arts Center

Our Town: Berrien Springs

**Lavera K. and Hollis E. Hughes,
Jr.**

Legends: Richmond &
Virginia Calvin

IBEW Local Union 153

Black History Month 2020

**Indiana Public Broadcasting
Stations - Blocks Rock**

Children's STEM

**Indiana Public Broadcasting
Stations - Managed Health
Services Indiana, Inc.**

Miscellaneous
Programming

**Indiana Public Broadcasting
Stations - United Montessori
Schools of Indiana**

Daniel Tiger

**Indiana Public Broadcasting
Stations - Visit Fort Wayne**

Children's Programming
Prime Time Programming

**Indiana Trust & Investment
Company**

Legends: Richmond &
Virginia Calvin

Masterpiece
PBS NewsHour
Prime Time Programming

Indiana University South Bend

Black History Month 2020
Dinner & a Book

Economic Outlook
EducationCounts_
Michiana

Experience Michiana
Legends: Richmond &
Virginia Calvin

Outdoor Elements
Politically Speaking

Insight Strategic Concepts, Inc.

The Elkhart Health and
Aquatics Center

Interlink

Our Town: Berrien Springs

Ironhand Wine and Bar

Cooking Programming
Nature

NOVA

PBS NewsHour

The Great British Baking
Show

Ivy Tech Community College

Legends: Richmond &
Virginia Calvin

Ivy Tech Foundation

Miscellaneous
Programming

Bernita A. Johnson

Legends: Richmond &
Virginia Calvin

**Calvin Johnson, State Farm
Agent**

Legends: Richmond &
Virginia Calvin

Jordan Automotive

Legends: Richmond &
Virginia Calvin

Miscellaneous
Programming

Jordan Ford

Dinner & a Book
Experience Michiana

Outdoor Elements
Politically Speaking

Pete Jorgensen

Legends: Pat Moody

Kappa Alpha Psi Fraternity

Legends: Richmond &
Virginia Calvin

James Kapsa

Legends: Richmond &
Virginia Calvin

Kem Krest

The Elkhart Health and
Aquatics Center

Brian King, DDS

Miscellaneous
Programming

Karl and Margaret King

Legends: Richmond &
Virginia Calvin

King Media

Legends: Pat Moody

Nancy and John King

Legends: Richmond &
Virginia Calvin

KitchenAid

Miscellaneous
Programming

**Kosciusko County Community
Foundation**

Our Town: North Webster

KoZmo Events

Antiques Roadshow
Experience Michiana

Masterpiece
Miscellaneous
Programming

Krasl Art Center

Miscellaneous
Programming

Kruggel Lawton CPAs

Legends: Pat Moody

Nancy and Jim Krzyzewski

Legends: Richmond &
Virginia Calvin

Laborers Local #645

Black History Month 2020
The Elkhart Health and
Aquatics Center

Legends: Richmond &
Virginia Calvin

Lake City Bank

Dinner & a Book
Experience Michiana

Miscellaneous
Programming

Lake Michigan College

Legends: Pat Moody

**Lake Michigan College - The
Mendel Center**

Miscellaneous
Programming

**Lee, Grove & Zalas, Attorneys
at Law**

Studebaker Fountain: A
Gift of Water and Light

Katrina and Darrick Lee

Legends: Richmond &
Virginia Calvin

Rebecca Levack

Legends: Richmond &
Virginia Calvin

Howard and Jewel Levy

Legends: Richmond &
Virginia Calvin

Eileen and Mike Lindburg

Studebaker Fountain: A
Gift of Water and Light

Logan Community Resources

Children's Programming
Miscellaneous
Programming

MailMax

Legends: Pat Moody

Marcus Realty, LLC

Legends: Richmond &
Virginia Calvin

Masterpiece: Victoria

Bill and Jane Marohn

Legends: Pat Moody

Marshall County Tourism

Our Town: Plymouth

Martin's Super Markets

The Elkhart Health and
Aquatics Center

Ken Burns: Country Music
Nature

Velvet and David Matthews

Studebaker Fountain: A
Gift of Water and Light

wnit Supporters (continued)

Information correct as of
press date. For a full listing
of program sponsors,
please contact WNIT.

Jeanette and George W. McCullough, Jr.
Legends: Richmond & Virginia Calvin

McDonald Physical Therapy
Black History Month 2020

Vicki McIntire and Charlie Hayes
Studebaker Fountain: A Gift of Water and Light

McLaughlin Realty
Our Town: Berrien Springs

Metcalfe, Payne & Bell Inc.
Our Town: North Webster

Michiana Antique Mall
Miscellaneous Programming

Michiana Eye Center
Miscellaneous Programming

Michiana Family YMCA
Miscellaneous Programming

Michiana Women Leaders
Miscellaneous Programming

Amika J. Micou and Family
Legends: Richmond & Virginia Calvin

Mid-City Supply
Hometime

Mid-West Family
Legends: Pat Moody

Mill Pond Apartments
Our Town: Buchanan

Miller Poultry
Antiques Roadshow
Dinner & a Book
Finding Your Roots
Masterpiece
Miscellaneous Programming
PBS NewsHour

Anne and Sam Milligan
Legends: Richmond & Virginia Calvin

Mishawaka City Clerk - Debbie Ladyga-Block
Legends: Richmond & Virginia Calvin

Mishawaka Furniture
Women's Programming

Moersch Hospitality Group
Legends: Pat Moody

Moody on the Market
Legends: Pat Moody

Morningview Assisted Living Residences
Antiques Roadshow
Dinner & a Book
Masterpiece

Mossberg & Company
Children's Programming

Musical Arts Indiana
Miscellaneous Programming

Nell Newton
Studebaker Fountain: A Gift of Water and Light

Notre Dame Federal Credit Union
Studebaker Fountain: A Gift of Water and Light

OJS Building Services
The Elkhart Health and Aquatics Center

Oaklawn
Miscellaneous Programming

Amy O'Day and Mike Yergler
Studebaker Fountain: A Gift of Water and Light

Old National Bank
Black History Month 2020

Oronoko Charter Township
Our Town: Berrien Springs

Iris and Warren Outlaw
Legends: Richmond & Virginia Calvin

Pain Management Group
Miscellaneous Programming

Papa John's Pizza
Children's Programming

Patchwork Dance Company
Miscellaneous Programming

Patrick Industries, Inc.
Children's Programming
The Elkhart Health and Aquatics Center

Tina and Michael Patton
Legends: Richmond & Virginia Calvin

Janice Patton-Hall
Legends: Richmond & Virginia Calvin

Peacock & Company
Miscellaneous Programming

Perennial Accents
Legends: Pat Moody

Peggy Perock
Our Town: Berrien Springs

Pfeifer, Morgan & Stesiak
Amanpour on PBS
Austin City Limits
Black History Month 2020
Legends: Richmond & Virginia Calvin
PBS NewsHour
Studebaker Fountain: A Gift of Water and Light

Donna and Richard Pfeil
Studebaker Fountain: A Gift of Water and Light

Barb & John Phair
Studebaker Fountain: A Gift of Water and Light

PNC Bank
Economic Outlook
Science Minute

Pokagon Band of Potawatomi
Dinner & a Book
EducationCounts_Michiana
Economic Outlook
Experience Michiana
Outdoor Elements
Politically Speaking

Potawatomi Zoological Society
Children's Programming
Miscellaneous Programming

Priebe's Creative Woodworking
Legends: Pat Moody

Pri Mar Petroleum, Inc.
Legends: Pat Moody

Pamela and Robby Rask
Studebaker Fountain: A Gift of Water and Light

REAL Services Simply Catering to You
Black History Month 2020

Red Hen Turf Farm
Our Town: Berrien Springs

Sheriff Bill Redman
Legends: Richmond & Virginia Calvin

Donna and Mark Richter
Studebaker Fountain: A Gift of Water and Light

River Bend Film Festival
Miscellaneous Programming

River Bend Hose Specialty
Miscellaneous Programming

River Front Forge
Miscellaneous Programming

Rollie Williams Paint Spot
The Elkhart Health and Aquatics Center

Ronald McDonald House Charities
Miscellaneous Programming

Round Barn Winery, Distillery, Brewery
Our Town: Berrien Springs

Sue and Pat Ruskowski
Studebaker Fountain: A Gift of Water and Light

Saint Joseph Health System
BBC World News America
Dinner & a Book
Economic Outlook
EducationCounts_Michiana

Saint Joseph PACE
BBC World News America
Dinner & a Book
Economic Outlook
EducationCounts_Michiana

Saint Joseph PACE
BBC World News America
Dinner & a Book
Economic Outlook
EducationCounts_Michiana

Saint Joseph PACE
BBC World News America
Dinner & a Book
Economic Outlook
EducationCounts_Michiana

Bill and Diane Sarnat
Legends: Richmond & Virginia Calvin

Darlene and Paul Scherer
Studebaker Fountain: A Gift of Water and Light

Lorrie and Bill Schmuhl
Legends: Richmond & Virginia Calvin

Lorrie and Bill Schmuhl
Legends: Richmond & Virginia Calvin
Studebaker Fountain: A Gift of Water and Light

Seifert Drugs
The Elkhart Health and Aquatics Center

Tom Seiffert
Studebaker Fountain: A Gift of Water and Light

Sew Creative Threads
The Elkhart Health and Aquatics Center

It's Sew Easy

Shadow Trailer World of Michiana
Our Town: Berrien Springs

Shakespeare at Notre Dame
Miscellaneous Programming

Vicki Shearer
Our Town: Berrien Springs

Silver Beach Carousel
Legends: Pat Moody

Skillman Corporation
The Elkhart Health and Aquatics Center

Snite Museum of Art
Black History Month 2020

South Bend Children's Dentistry
Children's Programming

South Bend City Clerk - Dawn Jones
Black History Month 2020

South Bend Civic Theatre
August Wilson: The Ground On Which I Stand
Miscellaneous Programming

South Bend Community School Corporation
Black History Month 2020

South Bend Civic Theatre
August Wilson: The Ground On Which I Stand
Miscellaneous Programming

South Bend Cubs
Children's Programming
Prime Time Programming

Nature NOVA

South Bend Education Foundation
Summer of Space

South Bend-Elkhart Audubon Society
Outdoor Elements

South Bend Human Rights Commission
Miscellaneous Programming

South Bend International Airport
BBC World News
Children's Programming
Legends: Pat Moody
Local Programming
Miscellaneous Programming
PBS NewsHour

South Bend Museum of Art
Studebaker Fountain: A Gift of Water and Light

South Bend Symphony Orchestra
Miscellaneous Programming

Southwest Michigan Regional Chamber
Legends: Pat Moody

Southwest Michigan Symphony Orchestra
Miscellaneous Programming

Southwestern Michigan Tourist Council
Legends: Pat Moody

St. Joseph County Democratic Party
Legends: Richmond & Virginia Calvin

St. Joseph County Health Department
Children's Programming
Prime Time Programming

St. Joseph Funeral Home
Miscellaneous Programming
Summer of Space

St. Joseph Today
Legends: Pat Moody

Starks Funeral Home - Heritage Chapel
Holiday Programming
Our Town: Berrien Springs

Stitch 'N Time Fabrics
Quilting and Sewing Programming

Joey and Kurt Stiver
Studebaker Fountain: A Gift of Water and Light

Studebaker National Museum
Miscellaneous Programming

Sweeney Julian Trial Attorneys
Austin City Limits
Studebaker Fountain: A Gift of Water and Light

Luther Taylor
Legends: Richmond & Virginia Calvin

Maya and Bryce Taylor
Legends: Richmond & Virginia Calvin

Teachers Credit Union
Miscellaneous Prime
Studebaker Fountain: A Gift of Water and Light

Teamor / Byrd Family
Legends: Richmond & Virginia Calvin

The Center at Donaldson
Cooking Programming
Experience Michiana
How-To Programming
Masterpiece

The Dental Center
Children's Programming

The Greater Elkhart Chamber of Commerce
Economic Outlook

The History Center at Courthouse Square
Our Town: Berrien Springs

The History Museum
Studebaker Fountain: A Gift of Water and Light
Summer of Space

The John DeVries Agency, Inc.
Our Town: Berrien Springs

The Milton Home
Legends: Richmond & Virginia Calvin
Miscellaneous Programming

The Music Village
Children's Programming

The PC Doctor
Business Programming

The Rex and Alice A. Martin Foundation
Dinner & a Book

The Salt Haven
Our Town: Berrien Springs

The Summers Group, LLC
Legends: Richmond & Virginia Calvin

The Village at Winona
Dinner & a Book
Economic Outlook
EducationCounts_
Michiana

Experience Michiana
History Detectives
Outdoor Elements
Politically Speaking

Janet and Larry Thompson
Studebaker Fountain: A Gift of Water and Light

Tire Rack
Legends: Richmond & Virginia Calvin
Studebaker Fountain: A Gift of Water and Light

Todd Realty, Inc.
Our Town: North Webster

Katie & Brad Toothaker
Legends: Richmond & Virginia Calvin

Treat's Squire Shop
Miscellaneous Programming

Tri-State Maintenance
Business Programming
News Programming

Twixwood Nursery LLC
Our Town: Berrien Springs

Tyler Automotive
Legends: Richmond & Virginia Calvin

United Way of Elkhart County
EducationCounts_
Michiana

United Way of St. Joseph County
EducationCounts_
Michiana

United Way of Southwest Michigan
Legends: Pat Moody

University of Notre Dame
Legends: Richmond & Virginia Calvin

Miscellaneous Programming
Summer of Space

Deb and Bob Urbanski
Legends: Richmond & Virginia Calvin

Vail Rubber Works, Inc.
Legends: Pat Moody

Van Buren District Library
Ken Burns: Country Music

Van Horne Jewelers
Ken Burns: Country Music
The Elkhart Health and Aquatics Center

Legends: Richmond & Virginia Calvin

Masterpiece: Victoria
Miscellaneous Programming
Studebaker Fountain: A Gift of Water and Light

Veldman's Automotive Center
Black History Month 2020

Village of Berrien Springs
Our Town: Berrien Springs

Villwock's Farm Market
Our Town: Berrien Springs

Villwocks Outdoor Living
Our Town: Berrien Springs

Jim Visin - Aire Wae Barber Shop
Legends: Pat Moody

Visit Fort Wayne
Children's Programming

Visit South Bend / Mishawaka
Experience Michiana

Waterfurnace Michiana
Our Town: Berrien Springs

Perry and Ida Reynolds Watson
Legends: Richmond & Virginia Calvin

WAUS-FM
Miscellaneous Programming

WSMK / WNIL Radio
Miscellaneous Programming

David Weaver
The Elkhart Health and Aquatics Center

Wellfield Botanic Gardens
The Elkhart Health and Aquatics Center

Whirlpool Corporation
Legends: Pat Moody

Karen White
Legends: Richmond & Virginia Calvin

Myrtle and Herbert Wilson
Legends: Richmond & Virginia Calvin

YMCA of Michiana
Children's Programming
Miscellaneous Programming

Yellow Rose Florist
Children's Programming

Your Story Hour, Inc.
Our Town: Berrien Springs

Zick's Specialty Meats, Inc.
Our Town: Berrien Springs

Zimmer Biomet
Black History Month 2020
NOVA

BUSINESS CLUBS
Chairman's Club (\$1,000)

Foot Solutions
Lyons Industries, Inc.

President's Club (\$500)
Rollie Williams Paint Spot
Sylvester & Tessie
Kaminski Foundation

Corporate Club (\$250)
Elkhart Child Development Center
Garden Patch Market
Hearth & Home
Nunemaker's Coin Shop, LLC
Sew Creative Threads
South Bend Museum of Art
Tuesley Hall Konopa, LLP
Vail Rubber Works
Yellow Rose Florist

KID'S CLUB AND RAISING READERS

John Anderson Foundation
Better World Books
Early Childhood Alliance
Indian Summer
Mossberg & Company
Papa John's
St. Joseph County Parks
Sylvester & Tessie
Kaminski Foundation
Texas Roadhouse
University Park Mall
YMCA of Michiana

Promotional Support

Alpha Graphics
Duley Press
Express Press
Mossberg & Company, Inc.
Rink Printing

General Operating Grants

1st Source WNIT Fund - CFSJC
WNIT Public Television Fund - CFSJC



WNIT Television Planner
P.O. Box 7034
South Bend, IN 46634-7034

PERIODICAL

Visit us at wnit.org



Find us on



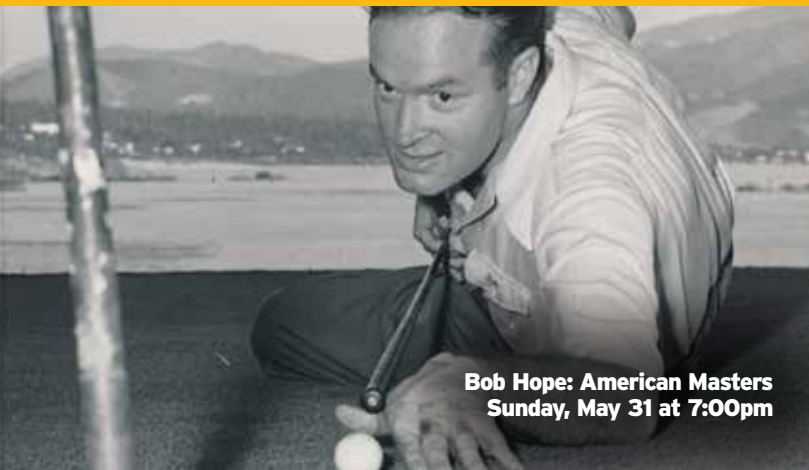
Iconic Women of Country
Saturday, May 30 at 7:00pm
Wednesday, June 3 at 9:00pm



Linda Ronstadt
Live in Hollywood
Saturday, May 30 at 8:30pm
Wednesday, June 3 at 7:30pm

WNIT MEMBERSHIP CAMPAIGN

MAY 28 - JUNE 10



Bob Hope: American Masters
Sunday, May 31 at 7:00pm



Red, White and Rock (My Music)
Saturday, June 6 at 7:30pm