



Board of Directors

Chair

Susan Ohmer, Ph.D.

Treasurer

Brian Inniger

Secretary

Duane Wilson

Directors

Dru Buck
Kyra Clark
Lynn Haller
Lowell Hamel, M.D.
John Lloyd
Dr. Christine Maziar
John Miller
Pat Moody
Gary Morseau
Mike Pound
Cindy Sachire
James Summers
Jill Long Thompson
Don Wycliff
Linda Yoder
John Zegliss

President and General Manager

Amanda Miller Kelley

Charter Directors

Arthur J. Decio*
Jerry Hammes
Ernestine M. Raclin*
Jane Warner*
Dar Wiekamp*

Honorary Life Directors

Robin Douglass
Mary Louise Miller**
Carmi Murphy
Bill Schmuhl
Thomas Slager**

*Deceased Charter Director

**Deceased



Amanda Miller Kelley
President
and General Manager
PBS Michiana – WNIT

January - February 2026

Dear Friends,

For more than 50 years, PBS Michiana – WNIT has been a vibrant part of our community's landscape. Our strength comes from the ground up: you are the roots that sustain us and ground us. As we stand at the threshold of 2026, we've been reimagining what it means to grow together, and how to make sure our branches reach every corner of this place we call home.

This vision starts with a focus on our local stories. We are shining a brighter light on the people and places that make our region unique, from the daily celebrations on *Experience Michiana* to our ever-expanding Docs and Discussions series. By bringing programs like *A Century at the Morris* and *Echoes of the Great Migration* into the community, we're reimagining the viewer experience—moving beyond a screen in your living room to spark real conversations in our neighborhoods.

As we cultivate growth, we have so much to share this season. This January we observe the International Holocaust Remembrance Day, and in February, we celebrate Black History Month with a powerful lineup of programming. I'm especially excited about Henry Louis Gates's newest deep-dive, *Black and Jewish America* coming February 3. We also continue to nurture our youngest learners by welcoming *Phoebe & Jay* to the PBS KIDS family, bringing fresh literacy skills to our seedlings. (And speaking of roots—the creator of this show is from South Bend!)

We're even reimagining how we tell our own story with our new WNIT Fandom Page. We're leaning into our inner nerd with WNITThrowback, featuring vintage materials and fun facts from our archives. We want you to build this history with us.

We're proud of where we've been, and we're excited about where we're going. Together, we're reimagining PBS Michiana – WNIT: still rooted here, with you and your favorite parts of what we do, but growing stronger and reaching higher for the future.

Thank you for growing with us, and thank you for always being our roots—the base of our tree.

Amanda Miller Kelley
President & General Manager

On the Cover



award-winning



Left to Right: Mayor of South Bend, James Mueller, PBS Michiana - WNIT Account Executive, Jody Freid, and PBS Michiana - WNIT President and General Manager, Amanda Miller Kelley.



Above: Jody Freid's Key to the City of South Bend.

A Proclamation and a Key!

January 19, 2026, at the Dr. Martin Luther King Jr. Breakfast Celebration, PBS Michiana - WNIT was honored with a mayoral proclamation recognizing our decades of service to this community and a long commitment to telling local stories.

And we were proud to stand with Jody Freid, Senior Account Executive, who received a Key to the City for her 30 years at WNIT, and for the passion and care she demonstrates every day.

We're proud to serve this community and grateful for the trust you place in public media. We're especially lucky to work alongside people like Jody who truly live its values.

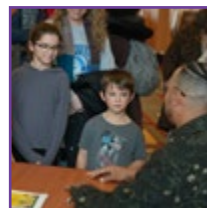
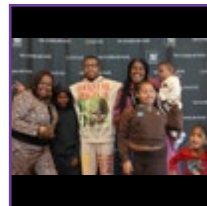
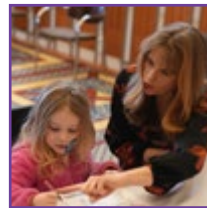
This recognition reminds us why local public media matters: lifting up voices, building understanding, and serving our neighbors—today, and for years to come.

WNIT Educational Engagement Event



Genie Dee, co-creator of the new PBS KIDS show *Phoebe & Jay* joined PBS Michiana - WNIT at the Browning Theatre, in the DeBartolo Performing Arts Center at the University

of Notre Dame on January 24 for a special preview before the broadcast premiere of the show. It was followed by a Q&A session, photos, and signing of autographs.



Phoebe & Jay: The South Bend Connection

Genie Dee (Eugene Staples Jr.) is a South Bend native and a doctoral student whose academic research on the history of reading influenced the show's educational focus. He is an alumnus of Notre Dame and a recipient of the Mister Rogers Memorial Scholarship for his work in children's media.

Phoebe & Jay is an animated series designed for preschoolers (ages 3-5) that focuses on functional literacy, teaching children how to read and engage with everyday texts like signs and labels to navigate the world around them.

**Phoebe & Jay premieres on February 2
on 34.1 & 34.3**

[See the Children's Programming Page for details](#)



Contents - Links to Pages





PBS is airing a new four-part documentary series with Dr. Henry Louis Gates, Jr. titled ***Black and Jewish America: An Interwoven History***, exploring the complex, intertwined history of Black and Jewish communities in America, highlighting solidarity, shared struggles against racism and antisemitism, major collaborations (like in the Civil Rights Movement and arts), and divisions, premiering on February 3, 2026.

The series promises to delve into their deep civic and cultural bonds, showcasing how they've faced common foes and built powerful alliances for progress, alongside the challenges that have strained their relationship.



Tue., Feb. 3 @ 9pm

Part One - Let My People Go

Tue., Feb 10 @ 9pm

Part Two - Strange Fruit

Tue., Feb 17

Part Three - The Grand Alliance @ 9pm

Part Four - Crossroads @ 10pm

PBS Michiana - WNIT

Channel 34.1



Count on PBS KIDS!

Watch Now

PBS KIDS and the PBS KIDS Logo are trademarks owned by Public Broadcasting Service. Used with permission. COUNT ON JUNE BUG © 2026 THIRTEEN Productions LLC. All rights reserved. PEG + CAT © 2013, Feline Features LLC. All rights reserved. WORK IT OUT WOMBATS! TM/© 2026 WGBH Educational Foundation. All rights reserved. SESAME STREET © 2026 Sesame Workshop®, Sesame Street®, and associated characters, trademarks, and design elements are owned and licensed by Sesame Workshop. All rights reserved. ODD SQUAD © 2014, The Fred Rogers Company. All rights reserved.

PBS Michiana

WNIT Weekly Programming

Dinner & a Book



April Lindinsky
& Gail Martin



From the bookshelf to the kitchen, we return with new recipes from best-sellers.



Visit Dinner & a Book
on our website



Saturdays @ 10:30am (34.1)
Thursdays @ 7:30pm (34.1)



#1 New York Times best-selling author Angeline Bouley (*Firekeeper's Daughter* and *Warrior Girl Unearthed*) joins Host April Lindinsky to create delicious food and discuss her new book *Sisters in the Wind*.

Angeline Bouley's heart-pumping third novel, *Sisters in the Wind*, moves and thrills with justice-seeking young people in the Ojibwe community telling stories of trauma and resilience in the foster system. April Lindinsky welcomes Michigan author and tribal citizen Angeline Bouley to the kitchen for conversation and cuisine.

Airs February 28 at 10:30am



Air date	Title	Author	Guest
2.7.26	<i>Everything I Learned, I Learned in a Chinese Restaurant</i>	Curtis Chin	Kathy Burnette
2.14.26	<i>Acts of Forgiveness</i>	Maura Cheeks	Dalila Huerta
2.21.26	<i>Whose Names are Unknown</i>	Sanora Babb	Francisco Robles
2.28.26	<i>Sisters in the Wind</i>	Angeline Bouley	Angeline Bouley

“Good food, good friends, good books, make for a very good life.”

PBS Michiana

WNIT Weekly Programming

Education Counts Michiana



Rev. James Summers



Sam Centellas



Our show highlights positive examples of learning across formal and informal spaces in our region.



Visit Education Counts on our website



Wednesdays @ 7:00pm (34.1)
& Sundays @ 1:00pm (34.1)



The TEACH scholarship is designed for early childhood educators as they pursue degrees while working in classrooms. In Michigan, teachers with the scholarship collaborate with school districts, colleges, and early childhood organizations to ensure they meet their goals.



Dog mushing isn't just a snow sport - it takes place on dry land too. Elkhart County Parks and the Heartland Mushers Association hold an annual mushing class, where people can learn the sport with dogs of all shapes and sizes.



The EdCounts Podcast explores the wide world of education through conversations with experts! Science, school choice, language, mental health, you name it - our goal is to help you learn about topics and trends that matter to you.

wnit.org/educationcounts/podcasts.html

PBS Michiana

WNIT Weekly Programming

**EXPERIENCE
MICHIANA**

Courtney Jorgensen

Irish Dave

Kelly Burgét

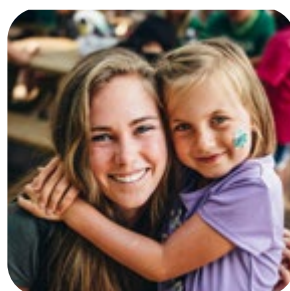
We are out in our communities
showcasing those things that
make our region unique.



Visit Experience Michiana
on our website



Thursdays @ 7:00pm (34.1)
& Saturdays @ 5:30pm (34.1)



Experience Michiana showcases things to do, places to eat, art and music to experience, and community events and activities. We are in our 15th year!



Happy New Year! One last look back at some of our favorite segments from 2025. We're excited for what's to come in 2026.

If you have ideas for what we should feature, let us know.

PBS Michiana

WNIT Weekly Programming



Evie Kirkwood



OE is about nature, the environment, and the outdoors in Michiana, in partnership with St. Joseph Co. Parks.



Visit Outdoor Elements on our website



Sundays @ 9:00am (34.1)
& Wednesdays @ 7:30pm (34.1)



Take a Hike!

Viewers can join host Evie Kirkwood and explore the region's parks, lakes, forests, dunes and more.

Along the way Evie and guests share their considerable knowledge on things like bald eagles, coyotes, grass frogs, acorns, paw paw, and native and invasive species to name a few.

Outdoor Elements webisodes can be found on the *Outdoor Elements* web page and also on Facebook and Youtube every Wednesday. Join us for our 20th year!

with Evie Kirkwood



Joey D



Joey D's Kitchen is a digital series about healthy eating and cooking. Vegan cuisine doesn't have to be hard.



Visit Joey D's Kitchen on our website



Toasting Pine Nuts



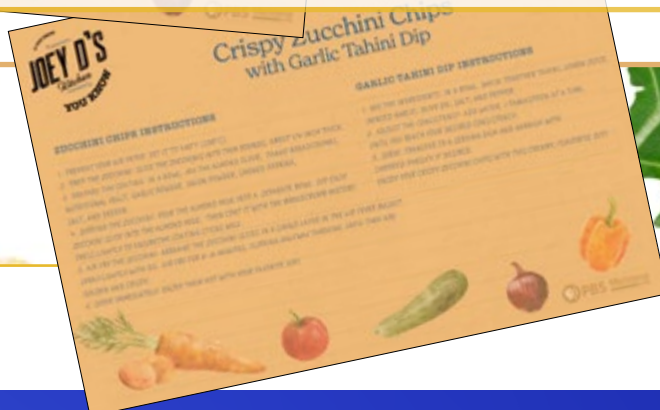
Thai Red Curry Noodle Soup



Greek Stuffed Mini Peppers

Joey D's Kitchen is a digital plant-based cooking web series. Do you love food? Do you want to eat better? Are you looking for simple but delicious vegan dishes?

Check us out online for a new video recipe. Joey D will show you how.





CREATE is your home for
how-to, featuring public TV's best
lifestyle, cooking, travel,
arts and crafts,
home improvement,
and other creative hobbies!



PBS Michiana

ORIGINAL DOCUMENTARIES

Tuesdays @ 7pm on 34.1



Legends of Michiana
Lynn Coleman
A Legacy of Love
Tuesday, February 3 at 7pm



The Black Church
A WNIT Conversation
Tuesday, February 10 at 7pm



Echoes of the Great Migration
Family Stories of Resilience
Tuesday, February 24 at 7pm

WNIT Membership Corner



I so appreciate PBS. It is my go to for fair informative NEWS, commentaries, and documentaries. I enjoy the community programs.



Hang in there. We can all do this together.

Sherrie – Granger, Indiana



2025 Tax Receipts

2025 tax receipts will be mailed in mid-January. Gifts to WNIT are tax deductible to the extent permitted by law. Your gift is deductible for the amount of the pledge minus the fair market value of any thank you gift you received. The fair market value of any thank you gift will be listed on your annual tax receipt. Please retain this receipt for tax purposes. Consult with your tax advisor for more information.



Double Your Donation!

Did you know that many employers sponsor matching gift programs to match charitable contributions made by their employees? *Gifts from employees' spouses and retirees may also qualify for a match.* PBS Michiana - WNIT has made it easy to find out if your employer has a matching gift program. To check if your employer will match your gift to WNIT, go [here](#).



SIGN UP FOR PBS BOOKS READERS CLUB

The PBS Books Readers Club Facebook group is your hub for all things bookish! With thousands of members and counting, there's no shortage of ideas, conversations or recommendations for you to enjoy.

Join now to find that next great read:

[PBS BOOK READERS CLUB ON FACEBOOK.](#)



Protect What You Love with FreeWill

If you've been meaning to get your estate planning in order, we might be able to help. WNIT has partnered with FreeWill to offer a secure, no-cost tool that makes it easy to create or update your will in just 20 minutes. We encourage you to take a moment to care for what matters most in your own life and use this service. It's an empowering way to:

- Protect the people you care about
- Plan for your home, pets, and assets
- Ensure your wishes are clearly documented

For more information, visit WNIT's [FreeWill](#).



Congratulations Brian Hoover!

Congratulations to Chief Engineer/Director of Broadcast Operations Brian Hoover, who is going into semi-retirement this month after 28 years at WNIT.

During his work with WNIT he has overseen all our facilities and equipment—broadcast and otherwise. Thank you to Brian for all his years of hard work and dedication!

Prior to joining WNIT in 1997, he spent ten years with WSBT Radio and Television as an engineering supervisor and seven years with WNDU Radio and Television as a staff engineer along with consulting work for several local radio stations. He is a 1981 graduate of Ivy Tech and a 1991 graduate of Bethel College with degrees in Electronic Communications and Organizational Management.

Some out-of-work fun facts:

- He has collected and restored an old Farmall tractor
- Brian, along with a few others, worked with the city to pass an ordinance to allow chickens in the city of South Bend (he still has his chickens)
- He's a member of the Michiana Amateur Radio Club, Indiana Freemasons, and an organist at his church
- He is a gardener and wine maker
- He holds US patent # 4,457,011

Wishing you a HAPPY ENGINEERS WEEK
Sun, Feb 22, 2026 – Sat, Feb 28, 2026

(Special thanks to WNIT Broadcast Engineer, Trent Evans, who helped with this article!)

This article is part of our WNIT Fandom Page which brings you WNIT Nerd and WNITthrowback.



If you have any interesting WNIT archive-worthy stories, facts, or photos from our 50+ year history [contact us!](#)



Worth Watching February

(Programs subject to change. For the most up to date schedule, visit wnit.org.)



TRIUMPH: TAMPA'S UNTOLD CHAPTER IN THE CIVIL RIGHTS MOVEMENT

Monday, February 2 at 11pm

Set in 1960s Florida, this powerful documentary uncovers a hidden chapter of the Civil Rights Movement. A courageous group of Black high school students organized peaceful sit-ins at a downtown lunch counter, sparking a wave of change across the city.

LEGENDS OF MICHIANA: LYNN COLEMAN

Tuesday, February 3 at 7pm & Sunday, February 8 at 2pm

A look into Lynn Coleman's unwavering commitment and remarkable contributions which have profoundly impacted the lives of many, making South Bend a better place for everyone.

BLACK AND JEWISH AMERICA: AN INTERWOVEN HISTORY

Tuesday, February 3 & 10 at 9pm and February 17 at 9pm & 10pm

Black and Jewish America: An Interwoven History is a four-part series tracing the rich, complex relationship between Black and Jewish Americans — defined by solidarity and strained by division. Drawn together by racism and antisemitism, they forged civic and cultural bonds, especially during the civil rights era.

FRONTLINE: CONTAMINATED, THE CARPET INDUSTRY TOXIC LEGACY

Tuesday, February 3 at 10pm

How carpet mills contaminated Southern communities with forever chemicals, known as PFAS. With The Associated Press, The Atlanta Journal-Constitution, The Post and Courier, AL.com, investigating the industry, accountability, and the health impacts.

NATURE: PARENTHOOD

Wednesdays, February 4-25 at 8pm

The acclaimed 2025 PBS documentary series, narrated by David Attenborough, showcases animal parents' incredible challenges and sacrifices raising young in a rapidly changing world.

NOVA: CAN DOGS TALK?

Wednesday, February 4 at 9pm & Saturday, February 7 at 4pm

Witness astonishing moments that challenge our assumptions about animal intelligence, from dogs that seemingly engage in conversations to those who learn new words with incredible speed.

INDEPENDENT LENS: THE LIBRARIANS

Monday, February 9 at 10pm

The Librarians follows librarians and citizens responding to restrictions on library content across the United States.

FRONTLINE: CRISIS IN VENEZUELA

Tuesday, February 10 at 10pm

The dramatic fall of Nicolas Maduro and what's next for Venezuela. With The Associated Press, investigating the legacy of corruption, challenges to democracy, conflict with the U.S., and the fight over who will control the oil-rich country.

GREAT MIGRATIONS: A PEOPLE ON THE MOVE

Thursday, February 12 from 8pm-midnight

Great Migrations: A People on the Move explores the transformative impact of Black migration on American culture and society.

ECONOMIC OUTLOOK SPECIAL: DATA CENTERS

Tuesday, February 17 at 7pm

In this special Economic Outlook, we examine what data centers are, why rural communities are at the center of this development, and how representatives are weighing economic opportunity against environmental responsibility.

Worth Watching February

(Programs subject to change. For the most up to date schedule, visit wnit.org.)



NOVA: RAIN BOMBS

Wednesday, February 18 at 9pm

An invisible, unpredictable atmospheric force is wreaking havoc across the globe - sinking superyachts, flattening forests, and bringing down airliners. Follow scientists as they race to understand these catastrophic weather events, exploring how they form, what causes their devastating impacts, and how we might someday learn to predict them.

AMERICAN MASTERS: SUN RA, DO THE IMPOSSIBLE

Friday, February 20 at 9pm

A kaleidoscopic portrait of the visionary jazz musician, composer, and poet known as Sun Ra and the musical, historical, and philosophical currents that shaped him.

DAVID HOLT'S STATE OF MUSIC

Saturday, February 21 at 10:30pm

David Holt's State of Music features music from emerging young artists as well as veteran masters. Shot entirely on location in North Carolina, Tennessee, Virginia, and South Carolina, the series showcases the musical heritage and scenic beauty of Southern Appalachia while introducing viewers to bluegrass, roots music, blues, new acoustic, and gospel music genres.

GREAT PERFORMANCES: MOVIES FOR GROWNUPS AWARDS WITH AARP MAGAZINE

Sunday, February 22 at 7pm

Iconic and beloved screen and stage performer Alan Cumming returns as host for this awards show in which Adam Sandler receives the Career Achievement Award.

ECHOES OF THE GREAT MIGRATION: FAMILY STORIES OF RESILIENCE

Tuesday, February 24 at 7pm

Echoes of the Great Migration: Family Stories of Resilience explores the enduring impact of the Great Migration through the voices of descendants and those who journeyed from the rural South to urban centers in the North.

FINDING YOUR ROOTS: ARTISTIC ROOTS

Tuesday, February 24 at 8pm

Henry Louis Gates, Jr. maps the roots of director Spike Lee and actor Kristin Chenoweth. Moving across Europe and the American South, Gates introduces his guests to ancestors who used their creativity to build a future for their families.

2026 STATE OF THE UNION ADDRESS - A PBS NEWS SPECIAL

Tuesday, February 24 at 9pm

The live coverage of the 2026 State of the Union Address - A PBS News Special will include the president's speech, the Democratic response, and analysis from the PBS News team.

RAISE YOUR HEAD UP: FREEDOM COLONIES IN AMERICA

Tuesday February 24 at 11pm

After the American Civil War, over four million formerly enslaved people were set free, but most had no place to go. Wanting some autonomy over their own lives, many formed Freedom Colonies in an endeavor to live as far away from the racism of Jim Crow as possible.

GOSPEL

Thursday, February 26 at 9pm

Gospel, the history series from Henry Louis Gates, Jr., digs deep into the origin story of Black spirituality through sermon and song.

34.1 & 34.2 Primetime February

34.1

34.2

(Programs subject to change. For the most up to date schedule, visit wnit.org.)

	7:00 PM	7:30 PM	8:00 PM	8:30 PM	9:00 PM	9:30 PM	10:00 PM	10:30 PM	11:00 PM	11:30 PM
1 SUN	Grantchester Sea. 6, Ep. 6		Miss Scarlet Sea. 6, Ep. 4 - Bad Blood		All Creatures Great and Small Sea. 6, Ep. 4 - Jenny Wren		Bookish - Deadly Nitrate Part 2		Seaside Hotel: Small Changes	
	To Dine For	Cook's Country: Never Enough	Great American Recipe: The Daily Dish		People of the North: Flavors of the Fjord	People of the North: Fosnavag	Rick Steves Rome		People of the North	Table for All with Buki El
2 MON	Samantha Brown's Places to Love	Rick Steves	Antiques Roadshow: Georgia State Railroad Museum, Hour 2		Antiques Roadshow: Old Sturbridge Village, Hour 2		Harriet Tubman: Visions of Freedom		Triumph: Tampa's Untold Chapter in the Civil Rights Movement	
	My Greek Table with Diane Hercules	Cook's Country: Spring Feast	America's Test Kitchen	Kitchen Curious with Vivian: Beans & Rice	People of the North: Helgelandskysten	People of the North: Sunndal	Rick Steves Europe: Portugal's Heartland	Ireland with Michael: The Galway Races	Seeing Canada	Best of the Joy of Painting
3 TUE	Legends of Michiana: Lynn Coleman		Finding Your Roots: Love & Basketball		Black and Jewish America: An Interwoven History, Pt. 1 - Let My People Go		Frontline: Contaminated, The Carpet Industry Legacy		Lithium Rising: The Race for Critical Minerals	
	Key Ingredient with Sheri: Figs Galore	Les Stroud's Wild Harvest	Christopher Kimball's Milk Street: Favorite Italian	Kitchen Curious with Vivian: Freezer	People of the North: Ryfylke	New Scandinavian Cooking	Rick Steves Europe Travel Skills	Joseph Rosendo's Steppin' Out	Travels with Darley: North Dakota	Best of the Joy of Painting
4 WED	Education Counts Michiana	Outdoor Elements	Nature: Parenthood - Grasslands		Nova: Can Dogs Talk?		Secrets of the Dead: The Quest for Camelot		Julius Caesar: The Making of a Dictator Part 1	
	Simply Ming: Broccoli and Beef	Cook's Country: Pork and Pierogi	Life of Loi: Mediterranean	Kitchen Curious with Vivian: Cast Iron	New Scandinavian Cooking: Polar Expedition	New Scandinavian Cooking: Danish	Rick Steves Europe: Greek Islands	Samantha Brown's Places to Go	Daytripper	Best of Joy of Painting
5 THU	Experience Michiana	Dinner & a Book	Through the Banks of the Red Cedar		The U.S. and the Holocaust: The Homeless, The Tempest-Tossed (1942-)				Two Wars: The Road to Integration	
	Kevin Belton's New Orleans: Crab Fest	Pati's Mexican Table: Food Meets Art	Christopher Kimball's Milk Street: Korean Fried	Kitchen Curious with Vivian: Pasta	New Scandinavian Cooking: Arctic Fire	New Scandinavian Cooking: World Flavors	Rick Steves: European Festivals	Joseph Rosendo's Steppin' Out	View Finders	Best of the Joy of Painting
6 FRI	Indiana Week in Review	American Black Journal	Washington Week	Firing Line	The American Revolution: The Soul of All America, Pt. 5				History w/David Rubenstein	
	Milk Street's My Family	Cook's Country: Spicy and Sour for Breakfast	America's Test Kitchen from Cook's Illustrated	Kitchen Curious with Vivian: Fat	No Passport Required: Houston		Fly Brother: Detroit	World's Greatest Cemeteries	Kevin Belton's Cookin' Louisiana	Kitchen Queens: New Orleans
7 SAT	Lawrence Welk Show: The Vacation Show		Magpie Murders, Pt. 1		Grantchester Sea. 6, Ep. 6		The Wild Rose Moon Hour		Austin City Limits: Leon Thomas	
	Christopher Kimball's Milk Street: Sweets	Pati's Mexican Table: Jalisco Calssics	Great American Recipe: Love Language		Best of Joy of Painting	Best of Joy of Painting	Rick Steves Best of the Alps		Essential Pepin: All Puffed Up	Pati's Mexican Table: Flour Power

AVAILABLE WITH
PBS Passport

THE
HENRY LOUIS GATES, JR.
COLLECTION



WATCH NOW



34.1 & 34.2 Primetime February

34.1

34.2

(Programs subject to change. For the most up to date schedule, visit wnit.org.)

	7:00 PM	7:30 PM	8:00 PM	8:30 PM	9:00 PM	9:30 PM	10:00 PM	10:30 PM	11:00 PM	11:30 PM
8 SUN	Grantchester Sea. 6, Ep. 7		Miss Scarlet Sea. 6, Ep. 5 - The Night Shift		All Creatures Great and Small Sea. 6, Ep. 5 - Fixes		Bookish - Such Devoted Sisters Part 1		Seaside Hotel: If You Want the Rainbow	
	To Dine For	Cook's Country: Smoky Barbecue Favorites	Great American Recipe: Moveable Feasts		No Passport Required: Houston		Rick Steves Cruising the Mediterranean		People of the North	Table for all with Buki El Challah & Chutzpah
9 MON	Samantha Brown's Places to Love	Rick Steves	Antiques Roadshow: Georgia State Railroad Museum, Hour 3		Antiques Roadshow: Old Sturbridge Village, Hour 3		Independent Lens: The Librarians		Freedom House Ambulance: The First Responders	
	My Greek Table with Diane: Food Secrets of Mykonos	Cook's Country: Smothered and Dowdied	America's Test Kitchen	Kitchen Curious with Vivian: Root Veggies	Fly Brother with Ernest White II: Detroit	World's Greatest Cemeteries: Woodlawn	Rick Steves Europe: Sicilian Delights	Ireland with Michael: Back Home to Derry	Seeing Canada: Nunavut & Yukon	Best of the Joy of Painting
10 TUE	The Black Church - A WNIT Conversation, Part 1	The Black Church - A WNIT Conversation Part 2	Finding Your Roots: Westward Bound		Black and Jewish America: An Interwoven History, Pt. 2 - Strange Fruit		Frontline: Crisis in Venezuela		Frontline: Status: Venezuela	
	Key Ingredient with Sheri: The Egg Comes First	Les Stroud's Wild Harvest: Juniper	Christopher Kimball's Milk Street: New Bistro Classics	Kitchen Curious with Vivian: Pickles	Kevin Belton's Cookin' Louisiana	Kitchen Queens: New Orleans Jazzy Shrimp	Rick Steves Europe: Scottish Highlands	Joseph Rosendo's Steppin' Out	Travels with Darley: Delaware Rev. Rd.	Best of the Joy of Painting
11 WED	Education Counts Michiana	Outdoor Elements	Nature: Parenthood - Freshwater		NOVA: Mammal Origins		Secrets of the Dead: The Herculaneum Scrolls		Julius Caesar: The Making of a Dictator Part 2	
	Simply Ming: Ravioli Two Ways	Cook's Country: BBQ Thighs and Fried Peaches	Life of Loi: Mediterranean	Kitchen Curious with Vivian: Fruit	Afro-Latino Travels	Dooky Chase Kitchen: Make It Good	Rick Steves Europe: Scotland's Islands	Samantha Brown's Places to Go	Daytripper	Best of the Joy of Painting
12 THU	Experience Michiana	Dinner & a Book	Great Migrations: A People on the Move - Exodus		Great Migrations: A People on the Move - Streets Paved with Gold		Great Migrations: A People on the Move - One Way Ticket Back		Great Migrations: A People on the Move - Coming to America	
	Kevin Belton's New Orleans: Etouffee Fest	Pati's Mexican Table: Los Mariachis	Christopher Kimball's Milk Street: Mexico's Riviera	Kitchen Curious with Vivian: Beans & Rice	No Passport Required: Boston		Rick Steves Europe: Glasgow & Scottish	Joseph Rosendo's Steppin' Out	View Finders	Best of the Joy of Painting
13 FRI	Indiana Week in Review	American Black Journal	Washington Week	Firing Line	The American Revolution: The Most Sacred Thing, Part 6					
	Milk Street's My Family	Cook's Country: Ribs and Mashed Potatoes	America's Test Kitchen: Steak and Veggies	Kitchen Curious with Vivian: Freezer	Fresh Glass: Camins2Dreams	Fresh Glass: Who's the Winemaker	Fresh Glass: Legacy of Trailblazer	Fresh Glass: Cassandra	Fresh Glass: Cassandra	Wine First: Rheingau
14 SAT	Lawrence Welk Show: Love Songs		Magpie Murders, Pt. 2		Grantchester Sea. 6, Ep. 7		County Road 689		Austin City Limits: Wynonna	
	Christopher Kimball's Milk Street: Beirut Fast Food	Pati's Mexican Table: Escaramuza	Great American Recipe: Party on a Plate		Best of the Joy of Painting	Best of the Joy of Painting	Rick Steves Egypt: Yesterday		Essential Pepin: Shell-celebration	Pati's Mexican Table: Sonora Family

STREAM ALL
EPISODES
PBS Passport

THE
PUZZLE LADY
NEW MYSTERY



WATCH NOW



34.1 & 34.2 Primetime February

34.1

34.2

(Programs subject to change. For the most up to date schedule, visit wnit.org.)

	7:00 PM	7:30 PM	8:00 PM	8:30 PM	9:00 PM	9:30 PM	10:00 PM	10:30 PM	11:00 PM	11:30 PM
15 SUN	Grantchester Sea. 6 Finale		Miss Scarlet Sea. 6, Ep. 5 - The Line of Duty		All Creatures Great and Small, Sea. 6, Ep. 6 - Our Hearts Are Full		Bookish - Such Devoted Sisters Part 2		Seaside Hotel: To Come Home	
	To Dine For	Cook's Country: Bourbon and Broccoli	Great American Recipe: Mix It Up		Fresh Glass: Camins2Dreams	Fresh Glass: Who's the Winemaker	Rick Steves European Festivals		People of the North	Table for All with Buko El
16 MON	Samantha Brown's Places to Love	Rick Steves	Antiques Roadshow: Coastal Main Botanical Gardens Hour 1		Antiques Roadshow: LSU Rural Life Museum Hour 1		American Experience: The Vice President		Becoming Frederick Douglass	
	My Greek Table with Diane: The Athenian Riviera	Cook's Country: Straight from So-Cal	America's Test Kitchen	Relish	Fresh Glass: Legacy of Trailblazer	Fresh Glass: Cassandra, Sisterhood	Rick Steves Europe: French Alps & Lyon	Ireland with Michael: Sunny South East	Seeing Canada: Pei, New Brunswick	Best of the Joy of Painting
17 TUE	Economic Outlook Special: Data Centers		Finding Your Roots: Family Harmonies		Black and Jewish America: An Interwoven History, Pt. 3 - The Grand Alliance		Black and Jewish America: An Interwoven History, Pt. 4 - Crossroads		Never Drop the Ball	
	Key Ingredient with Sheri: Let's Talk Homegrown Tomatoes	Les Stroud's Wild Harvest: Fiona's Forager Farm	Christopher Kimball's Milk Street: Vegetables	Relish	Fresh Glass: Cassandra Gets Down	Wine First: Rheingau	Rick Steves Europe: Germany's Fascist	Joseph Rosendo's Steppin' Out	Travels with Darley: North Carolina	Best of the Joy of Painting
18 WED	Education Counts Michiana	Outdoor Elements	Nature: Parenthood - Oceans		NOVA: Rain Bombs		Secrets of the Dead: Mozart's Sister		Julius Caesar: The Making of a Dictator Part 3	
	Simply Ming: Crab Cakes	Cook's Country: Southern Discoveries	Life of Loi: Mediterranean	Relish	Wine First: Styria & Burgenland	Wine First: Douro, Portugal	Rick Steves Europe: Egypt's Cairo	Samantha Brown's Places to Go	Daytripper	Best of the Joy of Painting
19 THU	Experience Michiana	Dinner & a Book	Making Black America: Through the Grapevine Pt. 1		Making Black America: Through the Grapevine Pt. 2		Making Black America: Through the Grapevine Pt. 3		Making Black America: Through the Grapevine Pt. 4	
	Kevin Belton's New Orleans: Bastille Day Fete	Pati's Mexican Table: Tradition and Innovation	Christopher Kimball's Milk Street	Relish	Wine First: Georgia, USA	Wine First: Three Climatic Zones	Rick Steves Europe: Egypt's Nile, Alexandria	Joseph Rosendo's Steppin' Out	View Finders	Best of the Joy of Painting
20 FRI	Indiana Week in Review	American Black Journal	Washington Week	Firing Line	American Masters: Sun Ra - Do the Impossible			King of Them All: The Story of King Records		History w/David Rubenstein
	Milk Street's My Family	Cook's Country: Cast Iron Comforts	America's Test Kitchen from Cook's Illustrated	Relish	Dream of Italy: Rome	Dream of Italy: Umbria	Dream of Italy: Venice	Dream of Italy: Florence	Dream of Italy: Tuscany	Dream of Italy: Americans Moving
21 SAT	Lawrence Welk Show: The Southern Show		Magpie Murders Part 3		Grantchester Sea. 6 Finale		The Caverns Sessions	David Holt's State of Music	Austin City Limits: Jon Batiste	
	Christopher Kimball's Milk Street: Tuesday Night Italian	Pati's Mexican Table: Getting to the Roots	Great American Recipe: Family		Best of Joy of Painting	Best of Joy of Painting	Rick Steves Experiencing Europe		Essential Pepin: Rollin' in Dough	Pati's Mexican Table: Sonoran Sea

STREAM ALL
EPISODES
PBS Passport

MASTERPIECE
MISS SCARLET
NEW SEASON

WATCH NOW



34.1 & 34.2 Primetime February

34.1

34.2

(Programs subject to change. For the most up to date schedule, visit wnit.org.)

	7:00 PM	7:30 PM	8:00 PM	8:30 PM	9:00 PM	9:30 PM	10:00 PM	10:30 PM	11:00 PM	11:30 PM
22 SUN	Great Performances: Movies for Grownups Awards with AARP The Magazine				All Creatures Great and Small Sea. 6, Ep. 7 - Comfort and Joy			All Creatures Great and Small Sea. 6, Ep. 7 - Comfort and Joy		
	To Dine For	Cook's Country: Plenty of Garlic	Great American Recipe: The Great American Recipe		Dream of Italy: Rome	Dream of Italy: Umbria	Rick Steves Poland		People of the North	Table for All with Buki El
23 MON	Samantha Brown's Places to Love	Rick Steves	Antiques Roadshow: Coastal Main Botanical Gardens Hour 2		Antiques Roadshow: LSU Rural Life Museum Hour 2		Independent Lens: The Inquisitor			Black College Football Hall of Fame: The Journey to Canton
	My Greek Table With Diane: Ancient Marble	Cook's Country: When Only Chocolate Will Do	America's Test Kitchen from Cook's Illustrated	Relish	Dream of Italy: Venice	Dream of Italy: Florence	Rick Steves Europe: Art of Europe	Ireland with Michael: Cork'd	Seeing Canada: Inuit Culture	Best of the Joy of Painting
24 TUE	Echoes of the Great Migration: Family Stories of Resilience		Finding Your Roots: Artistic Roots		2026 State of the Union - A PBS News Special				Raise Your Head Up: Freedom Colonies in America	
	Key Ingredient with Sheri: We're Sweet on Sweet Potatoes	Les Stroud's Wild Harvest: Tidal Pools	Christopher Kimball's Milk Street: Blender Cakes	Relish	Dream of Italy: Bocelli's Tuscany	Dream of Italy: Americans Moving	Rick Steves Europe: Art of Europe	Joseph Rosendo's Steppin' Out	Travels with Darley: New Jersey	Best of the Joy of Painting
25 WED	Education Counts Michiana	Outdoor Elements	Nature: Parenthood - Jungles		NOVA: Stone Age Temple Mystery		Secrets of the Dead: Hannibal in the Alps		Guardians of Yellowstone: The Yellowstone Cougar Project	
	Simply Ming: Sausage and Peppers	Cook's Country: The Italian- American Kitchen	Life of Loi: Mediterranean	Relish	Dream of Italy: Caserta	Dream of Europe: Lake Annecy France	Rick Steves Europe	Samantha Brown's Places to Go	Passion Italy: Sicily	Best of the Joy of Painting
26 THU	Experience Michiana	Dinner & a Book	Arts @ IUSB		Gospel: The Gospel Train Part 1		Gospel: The Gospel Train Part 2		Gospel: The Gospel Train Part 3	
	Kevin Belton's New Orleans: Fried Chicken Fest	Pati's Mexican Table: The Heart of Tequila	Christopher Kimball's Milk Street: Real Chicken Kyiv	Relish	Dream of Europe: Malta	Dream of Europe: Albania	Rick Steves Europe: Art of Europe	Joseph Rosendo's Steppin' Out	View Finders	Best of the Joy of Painting
27 FRI	Indiana Week in Review	American Black Journal	Washington Week	Firing Line	Great Performances				TBA	
	Milk Street's My Family	Cook's Country: Ultimate Comfort Foods	America's Test Kitchen from Cook's Illustrated	Relish	Table for All with Buki El: Underground Railroad	Table for All with Buki El: Philippines	Table for All with Buki El: Farming Garden State	Table for All with Buki El: Trip Through Flavors	Table for All with Buki El: Challah & Chutzpah	Table for All with Buki El: Palestinian
28 SAT	Barry Bostwick Presents: Classical Rewind (cont.)		Barbra Streisand: Timeless - Live in Concert				The All New Pop, Rock and Doo Wop (My Music)			
	Christopher Kimball's Milk Street: Holiday Entertaining	Pati's Mexican Table: Double Vallaria	Great American Recipe		Best of the Joy of Painting	Best of the Joy of Painting	Rick Steves Iceland		Essential Pepin: Egg- ceptional	Pati's Mexican Table: Super Sonoran

STREAM ALL
EPISODES

PBS Passport



WATCH NOW





HOLY CROSS VILLAGE
AT NOTRE DAME
Sponsored by the Brothers of Holy Cross

Join Our Award-Winning Community!








Best...
ASSISTED LIVING
RETIREMENT/55+ COMMUNITY
NURSING HOME




HERE TO HELP YOU

Enjoy Life to the Fullest

- Independent Villa Homes
- Independent Apartments
- Assisted Living Apartments
- Skilled Nursing & Therapy Services



ASK ABOUT AVAILABILITY!
Not ready to move today?
Join our Future Residents Club
to wait for the perfect space!

(574) 251-2235
hello@holycrossvillage.org
www.holycrossvillage.org
54515 SR 933 North, Notre Dame, IN 46556

Proudly supporting
PBS Michiana WNIT-TV
in its mission to educate,
inspire, and unify.



INDIANA TRUST
Wealth Management

Legacies Built On Trust




*Relationships drive results.
One conversation at a time.*

IndTrust.com

The WNIT Shop!

Support your PBS station and your favorite local shows!



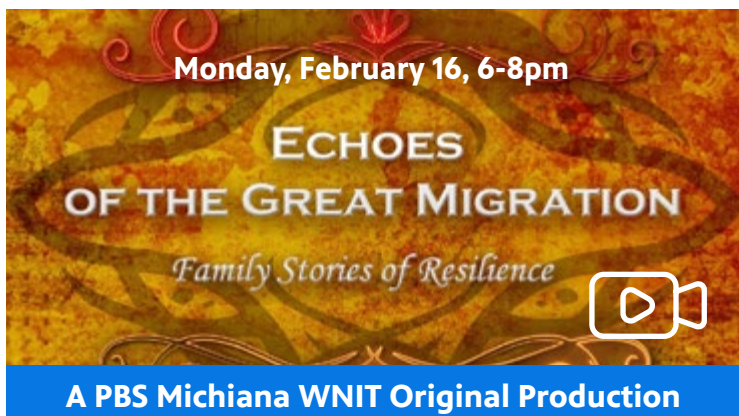
pbsmichiana.printful.me

PBS Michiana

WNIT Production Events



We've partnered with the St. Joseph County Public Library Main Branch to bring you a new series "Docs and Discussions" where the community can come together and enjoy a locally-produced documentary from PBS Michiana - WNIT and have fun conversation! Refreshments provided.



Monday, February 9, 6-8pm
A Century at the Morris:
100 Years of Inspiration

sjcpl.libnet.info/event/14812515

.....

Monday, February 16, 6-8pm
Echoes of the Great Migration

(in celebration of Black History Month)

sjcpl.libnet.info/event/14811545

.....

Main Library - Community Learning Center
Leighton Auditorium
304 S. Main Street
South Bend, IN

Doors open - 5:30pm

Comments and introductions - 6pm

Documentary presentation - 6:15pm

Q&A & Conversation - 7:15pm – 8pm



WNIT CHILDREN'S PROGRAMMING

WNIT Channel 34.3 - PBS KIDS MICHIANA 24/7

WNIT Channel 34.1

Monday - Friday	
6:00 AM	Arthur
6:30 AM	Odd Squad
7:00 AM	Wild Kratts
7:30 AM	Weather Hunters
8:00 AM	Lyla in the Loop
8:30 AM	Carl the Collector
9:00 AM	Daniel Tiger
9:30 AM	Phoebe & Jay
10:00 AM	Sesame Street
10:30 AM	Work it Out Wombats
11:00 AM	Donkey Hodie
11:30 AM	Rosie's Rules
NOON	Elinor Wonders Why
12:30 PM	Alma's Way
1:00 PM	Molly of Denali
1:30 PM	Xavier Riddle
Sunday	
6:00 AM	Mister Rogers
6:30 AM	Arthur
7:00 AM	Wild Kratts
7:30 AM	Weather Hunters
8:00 AM	Cyberchase
8:30 AM	SciGirls

	Monday-Friday	Saturday-Sunday
6:00 AM	Clifford	The Cat in the Hat
6:30 AM	Sesame Street	Dinosaur Train
7:00 AM	Pinkalicious	Pinkalicious
7:30 AM	Curious George	Peg + Cat
8:00 AM	Sesame Street	Sesame Street
8:30 AM	Phoebe & Jay	Phoebe & Jay
9:00 AM	Work It Out Wombats!	Work It Out Wombats!
9:30 AM	Work It Out Wombats!	Work It Out Wombats!
10:00 AM	Daniel Tiger	Daniel Tiger
10:30 AM	Daniel Tiger	Daniel Tiger
11:00 AM	Carl the Collector	Carl the Collector
11:30 AM	Carl the Collector	Curious George
NOON	Donkey Hodie	Donkey Hodie
12:30 PM	Donkey Hodie	Milo
1:00 PM	Elinor Wonders Why	Elinor Wonders Why
1:30 PM	Rosie's Rules	Rosie's Rules
2:00 PM	Rosie's Rules	Rosie's Rules
2:30 PM	Xavier Riddle	Xavier Riddle
3:00 PM	Molly of Denali	Molly of Denali
3:30 PM	Alma's Way	Alma's Way
4:00 PM	Lyla in the Loop	Lyla in the Loop
4:30 PM	Weather Hunters	Arthur
5:00 PM	Odd Squad	Odd Squad
5:30 PM	Wild Kratts	Wild Kratts
6:00 PM	Wild Kratts	Wild Kratts
6:30 PM	Weather Hunters	Weather Hunters
7:00 PM	Lyla in the Loop	PBS Kids Family Night
7:30 PM	Arthur	
8:00 PM	Nature Cat	
8:30 PM	Hero Elementary	
9:00 PM	Cyberchase	Cyberchase
9:30 PM	Let's Go Luna!	Ready Jet Go!



PBS KIDS learning goals focus on a whole-child approach, developing key developmental areas like literacy, math, science (STEM), critical thinking, and social-emotional skills (empathy, resilience) through research-based, developmentally appropriate media, games,

and activities to help kids succeed in school and life. Specific goals vary by show, targeting skills like early literacy, scientific inquiry, engineering, math, or managing emotions, all designed to build confident, curious, and caring individuals.



Learning Goals



Series	Grade	Learning Goals
Acoustic Rooster	PK-K	The Arts
Alma's Way	PK-K	Emotions, Self-Awareness, & Relationships
Arthur	K-2	Emotions, Self-Awareness & Relationships
Carl the Collector	K-2	Emotions, Self-Awareness & Relationships
City Island	K-2	Social Studies
Clifford the Big Red Dog	PK-K	Literacy & Language, Relationships
Count on June Bug	PK-K	Math
Curious George	PK-K	Math, Science & Engineering
Cyberchase	1-2	Math & Science
Daniel Tiger's Neighborhood	PK-K	Emotions, Self-Awareness & Relationships
Design Squad Global	1-2	Science & Engineering
Dinosaur Train	PK-K	Science
Donkey Hodie	PK	Emotions, Self-Awareness & Relationships
Elinor Wonders Why	PK-K	Science & Engineering
Hero Elementary	K-2	Science & Engineering
Jamming on the Job	K-2	Social Studies, Self-Awareness & Relationships
Jelly, Ben & Pogo	PK-K	Self-Awareness, Relationships & The Arts
Keyshawn Solves It	K-2	Emotions, Self-Awareness & Relationships
Let's Go Luna!	K-2	Social Studies
Lyla in the Loop	K-2	Science, Technology, Engineering & Math
Mega Wow	K-2	Science & Engineering
Mister Rogers' Neighborhood	PK-K	Emotions, Self-Awareness & Relationships
Molly of Denali	K-2	Literacy & Language
Nature Cat	K-2	Science
Milo	PK-K	Social Studies



Mystery League	K-2	Social Studies
Odd Squad	K-2	Math
Oh Noah!	K-2	Spanish & Social Studies
Phoebe & Jay	PK-K	Literacy & Language
Peg + Cat	PK-K	Math
Pinkalicious & Peterrific	PK-K	The Arts
Ready Jet Go!	K-2	Science & Engineering
Rosie's Rules	PK-K	Social Studies
SciGirls	1-2	Science & Engineering
Scribbles and Ink	K-2	The Arts
Sesame Street	PK-K	Emotions, Self-Awareness, Relationships, Math, Literacy & Language
Sid the Science	PK-K	Science
Super Why's Comic Book Adventures	PK-K	Literacy & Language
Team Hamster!	K-2	Science & Engineering
The Cat in the Hat Knows a Lot About	PK-K	Science & Engineering
The Ruff Ruffman Show	K-2	Science & Engineering
Through the Woods	PK-K	Science
Tiny Time Travel	K-2	Literacy & Language
Together We Can	K-2	Social Studies
Weather Hunters	K-2	Science, Technology & Engineering
What Can You Become?	PK-K	Social Studies, Self-Awareness & Relationships
Wild Kratts	K-2	Science
WordGirl	K-2	Literacy & Language
Word World	PK-K	Literacy & Language
Work It Out Wombats!	PK-K	Science, Technology, Engineering & Math
Xavier Riddle and the Secret Museum	K-2	Emotions, Self-Awareness & Relationships



Watch and play on PBS KIDS! pbskids.org

PBS Michiana - WNIT Kids Club



PBS MICHIANA KIDS CLUB MEMBERS GET COOL STUFF LIKE

- a PBS Michiana Kids Club backpack with PBS Kids swag
- a special treat from Chick-fil-A
- free or discounted ticket offers to area children's performances
- early registration for PBS Michiana Kids Club events
- an on-air birthday greeting during their birthday month
- a birthday listing in the Planner
- a PBS Kids birthday card and special birthday gift
- and more!



Michiana
KIDS CLUB

**JOIN
TODAY**

Sponsored by:

TIRE RACK
.com

Proud supporter of PBS KIDS programming!

HAPPY BIRTHDAY!

PBS Michiana - WNIT Kids Club Members!

January and February Birthdays

NAME	AGE
Lucas Binkley	5
Dawson Chandler	9
Emma Crume	3
Kaspar Dietz	3
Sadie Feldman	10
Charis Holt	7
Naomi Kio	12
Evelyn Kulis	3
Jenna Lehman	12

NAME	AGE
Aurora Marquez	2
Zayla Morehouse	8
Darian Noonan	7
Asher Roberts	6
Lucy Sater	10
Lalley Stevens	10
Roxas Turner	9
Mia Winkel	5



Michiana
KIDS CLUB



PBS Michiana - WNIT KIDS Education

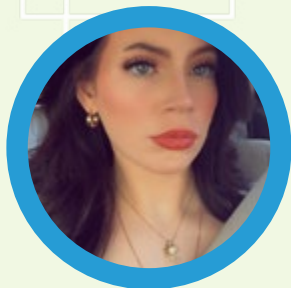
Local Impact & Local Engagement



Leah Steinhiser

LSteinhiser@WNIT.ORG
574-675-9648 x328

Leah Steinhiser is your Educational Engagement Liaison for PBS Michiana-WNIT, serving Northern Indiana and Southwest Michigan.



Liz Deford

LDeford@WNIT.ORG
574-675-9648 x 309

Liz Deford is the Educational Engagement Assistant responsible for outreach to Elkhart, Noble and LaGrange Counties.



Request a Presentation!

Leah Steinhiser
Educational Engagement Liaison
LSteinhiser@WNIT.ORG
574-675-9648 x328



Have a topic you're interested in and a favorite show?

Share your ideas so we can build a custom presentation just for you!



Educator Professional Development

PBS LearningMedia (K-12)
Lessons aligned to state standards when you set up a free account with your email.



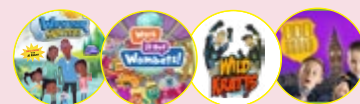
Family Fun Learning Night

Wild Kratts
Sesame Street
Dinosaur Train
Nature Cat



STEM Activities

Weather Hunters
Work It Out Wombats
Wild Kratts
Odd Squad



Social-Emotional Learning

Daniel Tiger
Carl the Collector
Rosie's Rules
Sesame Street



Literacy and Language

Super Why!
Phoebe & Jay
Word World
Read, Write, ROAR!



PBS Michiana - WNIT Young Adult Learning

PBS NEWS HOUR CLASSROOM



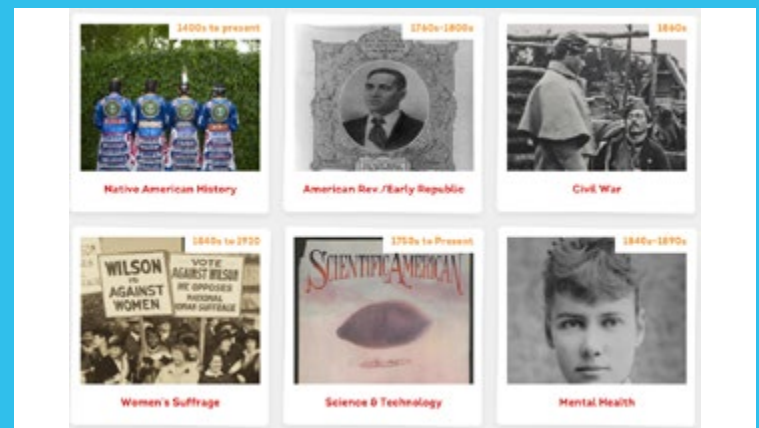
Join the team LIVE in Antarctica and ask Miles O'Brien your questions over Zoom on Tues. Feb. 10 at 12-pm ET! [Read more here.](#)

(Grades 6-12). Scientists are worried about the melting of Antarctica's ice sheets and what it could mean for sea levels. There's a two-month-long journey underway to conduct research that will better explain what's happening. But it's a journey that provides no guarantees that researchers will even be able to get the data they want. Science correspondent Miles O'Brien reports for our series, *Tipping Point*.



Journalism in Action (Grades 6-12). is an interactive PBS LearningMedia and PBS NewsHour Classroom project that teaches middle and high school students the history of journalism through primary sources. It explores 10 key U.S. historical periods—from the Revolutionary War to the modern day—covering the role of a free press using articles, broadcasts, and cartoons.

Learn more [here](#).



February is

BLACK HISTORY MONTH



Celebrate Black History Month this year with a look at the lives of Black Americans who have made indelible marks on history with their artistry, professional achievements, and community activism.

See the [Schedule](#) for details



For Teachers

These classroom resources aim to inspire educators to intentionally include Black history and stories in all curricula, using PBS LearningMedia as a tool in doing so, and celebrate Black history this month — and all year long.

Explore videos, media galleries, lesson plans, and more for students! [See the assets here.](#)



June 1

Venue details
for the
Indianapolis
event will be
published soon.

INDIANAPOLIS, INDIANA

A PBS *Michiana* - WNIT favorite,
Antiques Roadshow, will be in Indianapolis this summer!

See the full tour schedule
and enter a chance for tickets [here](#).

2026
SEASON

SOUTH
BEND
CIVIC
THEATRE



Tickets and
FLEXPASSES
sbct.org



The Imaginary Invalid
Warner Studio
February 13-22

*Diary of a Wimpy Kid:
The Musical*
Battell Center
March 13-21

It Shoulda Been You
Wilson Auditorium
April 24-May 10

Our Lady of the Tortilla
Warner Studio
May 29-June 7

The Drowsy Chaperone
Wilson Auditorium
July 10-26

Blithe Spirit
Warner Studio
August 14-23

Between the Lines, Jr.
Bendix Arena, Century Center
September 17-20

August Wilson's Fences
Wilson Auditorium
October 2-18

Ride the Cyclone
Warner Studio
October 30-November 15

Miracle on 34th Street
Wilson Auditorium
December 4-20

Directors' Circle



The WNIT Directors' Circle represents a very dedicated and select group of individuals who, by their commitment, contribute to the total annual support which is the foundation of WNIT's operating budget. These essential annual contributions make possible the great programs that everyone in Michiana enjoys.

January - February Thank you!

Diamond Level (\$10,000 +)

Anonymous Foundation (2)
Hari and Seema Agarwal
Estate of Jack and Shirley Appleton
Billie and David Bankoff
Marijke M Brown
Arthur J. Decio*
Roger and Joyce Foley
Steven and Ann Herendeen
Mrs. Sue Hiler
Joan Hofman
Michael and Janice Imgrund
Brian and Melinda Inniger
James and Christine Kelly
Bob and Pat Kill
Ralph Komasinski and
Katherine Humphreys
Michael Leep
Don and Joan Lyons
Ursula and Daniel Madejczyk
William and Linda Meyer
Barb and John Phair
Carol Purdy
Ernestine M. Raclin*
Robby and Pamela Rask
Pat and Sue Ruszkowski
Lorrie and Bill Schmuhl
Maria Slager
Craig D. Sullivan and Cynthia L. Harris
Sonny* and Dee* Tepe
Janet and Larry Thompson
Thomas F. and Anita J. Veldman
Scott and Kimberlee Welch
Barbara Wind
Wen and Susan Wu

Platinum Level (\$5,000 +)

Anonymous Foundation
Louise and Stephan Anella
Dr. James Barnes
Marianne Corr
Katy and Tim Demarais
Richard and Jean Dennen
Bipin and Linda Doshi
Margaret Dreves
Paul Levett and Judith Eck
Martha Foreman
Van Gates
Gates Fund of the Community
Foundation of St. Joseph County
Dave and Ginny Gibson
William and Leslie Gitlin
Hillman Family Fund of the Community
Foundation of St. Joseph County
Howard and Marie Goodhew Fund
of the Community Foundation
of St. Joseph County
Janice and Larry Harding
Mike and Dianne Kelbel
Marijo and Kevin Kelly
Michael and Rebecca Kubacki
Lake City Bank Foundation
Jill Long Thompson
Ashley Martin
Chris Maziar
Max and Lydia Mertz
Chris and Carmi Murphy

Michael and Amy Phend
Donna and Mark Richter
Rob and Lee Riley
Gerald H. Shaffer
Robert and Christine Smith
Michael and Colleen Thomas
Barbara Williams

Gold Level (\$2,500 +)

Anonymous (2)
Julie and Thomas Brenner
Donna Brown
Candy Discavage
Neil and Lori Donahoe
Jan Farron
Mary Beth and Greg Giczi
Hand Family Foundation, Inc.
Thomas Hudak
Carol and Craig Kapson
Timothy and Sue Liddell
Sara Marcus
Wade Mayberry
Judith McDowell
Robert and Jane Miller
Susan Ohmer and Donald Crafton
Jeff and RaeLee Rea
Thomas Richardson
Douglas and Nancy Sakaguchi
Rich and Donna Vavra-Musser
Tom and Margie Yarger

Silver Level (\$1,000 +)

Anonymous (3)
Audrey Alderfer
Joan E Aldrich
Susan and David Bailey
Dean and Suzanne Baker
Stephen and Nancy Ball
Linda Bancroft
Metta & Roger Barbour
Charitable Gift Fund
Joseph and Marzy Bauer
Kathy Malone Beeler
Janice Beutter
Jo Ann and Joe Blazek
Glen Blinn
Kathleen Bondi
Kimberley D. Bow Sundry
Gina and Jim Bremner
George and Patricia Burgoyne
Janette Burkhart-Miller
Mrs. James Butler
Terri Calkins
Dirkus Callahan
David and Kirsten Campbell
Edward L. Carrico
Dominic Chaloner
Theodore and Faye Chamberlain
Geoff and Kathie Church
Jack and Karen Cittadine
Peg Claeys
Barbara Clausen
Ken Clayborn
Dr. Robert E. Clemency
Julie Coyle
David Crothers and Richard Threet
Dale and Mary Lou Deardorff

Janet Deaton
Drs. A Philip and Mary Depauw
Jim and Helen Desenberg
Barbara Dillon
Nancy Dunbar
Brian Esch
Diane Eskridge
Dorothy Feigl
Faith Fleming and Dan Stowe
Chris and Patty Fowler
Dianne and Don Frandsen
Stephen and Barbara Fredman
Jody and Mike Freid
Mrs. L. Craig Fulmer
Victor Gamble
Rodney and Carol Ganey
Maggie and Steve Goldberg
Frank Greene
Trent Grocock
Charles Hackensmith
Lynn Haller
Loren and Ann Hamel
Mary Hamm
Joan Hardesty
Edward and Joan Hardig
Joseph and Julie Harmon
Drs. James and Holly Harris
Sharee and Frank Hartman
Dan Hektor and Tela Schulman-Hektor
Jennifer and Frederick Helmen
Donna Hill
Dennis G. Hoffer
Philip and Adelle Holdread
Keim and Sylvia Houser
James W. and Sally F. Hubbard
Duane and Beth Huffer
Hollis E. Hughes
Dr. and Mrs. Tom Hughes
Nelson Hurt
Interstate Asphalt
Nancy Johnson
Sharon L. Jones
Deborah and Allan Kayler
Linda and Karl Kincade
Peggy King and Richard Mock
Sandra and Rod King
Donna Kirby
Susan K. Kratz
James and Nancy Krzyzewski
Richard Lamanna
Philip and Becky Laney
Drs. Gail English and Nels Leininger
Michael and Karen Lemmon
Charles Leone
Dr. Robert D. Lerch
Richard and Linda Letherman
Rebecca and Timothy Link
John Lloyd
Norma Lou
Steve and Peg Luecke
Robert and Nancy Lute
Paul and Jessica Maich
Helen and Richard Mao
Jason and Kirsten Marker
Thomas and Laura Marnocha
Sharon Mast
John Mastrojohn and Mike Davids

Debra and Thomas McArthur
Scott McCann
Dr. Debra and Rodney McClain
Kara McClure
Carolyn McDonald and
Michael Coppedge
Stephen and Connie McTigue
Jane K. Miller
Marilyn Miller-Ortiz
Robert Mitsch
Dr. and Mrs. Brian Moloney
Anila and James Mondabaugh
Pat and Carol Moody
Carol A. Moore
Leigh and Marcia Morris
Vicki and Bill Morton
Edward and Ruth Ann Mosher
Tony and Jill Mroczkiewicz
Sue Neeb
Thomas and Marlene Nowak
Paul and Carol Nye
Ed and Mary Evelyn O'Dell
Neil and Diane Orians
Kathy and Thomas Platt
Howard and Charlotte Poole
Dr. Yupadi Prasertwanitch
Anne Reel
Claude and Mary Renshaw
Karin and Hugh Rettinger
Ruth J. Retzke
The Honorable James W. Rieckhoff
Charles Rizzo
Gabrielle Robinson
June Rollinger
The Paul Saltzgaber Memorial Fund
for Reading, Writing and the Arts
Dr. William and Diane Sarnat
Rhoda Schrag
Kenton and Sally Schreck
Marilyn Shaul
James and Patricia Short
Mary T. Short
Ben and Judith Smith
Byron and Eloise Smith
Jennifer and Mark Smith
Ellyn Stecker and Peter Smith
Rosemary Spalding
William and Jennifer Squiers
Thomas H. Story
Perry Stow and Andrea Mather-Stow
Beth and Greg Suderman
Andika Suhardjo
Donald and Mary Swift
Patricia Taplick
Linda Toth
Richard Treckelo
Susan Vanek
Richard and Jane Wallace
Fred and Mary Wassilak
Timothy and Beth Weber
Cynthia Wendzonka
Robert F. Werner Jr. and
Kathleen A. Werner
John and Mary Wiley
Martyn and Kathleen Wills
Sarah Wisthuff
Pam and Don Wycliff

Directors' Circle



The WNIT Directors' Circle represents a very dedicated and select group of individuals who, by their commitment, contribute to the total annual support which is the foundation of WNIT's operating budget. These essential annual contributions make possible the great programs that everyone in Michiana enjoys.

January - February Thank you!

Sharon Yeager and Henry Veldman
Mary Lehman Yoder
Richard and Joy Yoder
John D. and Carol Zeglis
Kathryn and Lorenzo Zeugner
Robert and Frances Zielsdorf
Jerome and Barb Ziliak

Bronze Level (\$500 +)

Anonymous (8)
Mary Liechty Adams
Hary and Roberta Alfrey
Rex and Nancy Allman
Eric and Sandy Amt
Keri and Donald Anderson
David and Toni Annis
Mr. and Mrs. Frank Antonovitz
Orrin and Gwen Bailey
Reginald F. Bain
Tim and Mary Baker
Stuart and Paula Barb
David Bartkus and Carolyn Woo
James Beatty
Cynthia and Matt Benedict
Alice and John Bentley
David and Teresa Betz
Anne Birky
Hayley Boling
Kenneth Boyd
Elizabeth Naquin Borger
James Bowman
Brian and Jeannelle Brady
William and Shannon Brewster
George and Martha Buckingham
Heidi Beidinger-Burnett
and Bruce Burnett
Emily Neufeld and Drew Buscareno
Chasten and Pete Buttigieg Family
Fund (PT) of the Community
Foundation of St. Joseph County
Jeffrey and Angela Buysse
Deborah Cafiero
Lynn Carbone
Ian and Barbara Carmichael
Cristeen and James Causey
Edward and Carla Chester
Leslie Choitz
Donald and Marianne Christenson
Kyra Clark
Mary Lou Cotton
Douglas D. Cripe
Frank and Patricia Criniti
Julia A. Crume
Debra Dailey
E. Marlene Davidson
Douglas and Patricia Davis
Tom and Debbie Davisson
Marianne Day
Rhonda De Vreese
Jeff and Jamie Diller
Louella Dilts
Ann and Paul Divine
Stephen Donndelinger
Robin and Lisa Douglass
Elizabeth Dowd
Greg and Mary Downes
Joel and Amy Duthie
Fernand and Brigid Dutile

Elaine Egging
Bruno and Rosary Eidietis
Cathy Emmel
Georges Enderle
Jill and Chris Erb
Jane Eslick
Nancy and Bill Everett
Anne Feferman
Thomas Felger
Sallee and James Field
Nancy Filley
Frank and Wendy Folk
James A. Freel and Kathryn Waltz-Freel
Dianna Fox
George and Kathy Freese
Michael Friedland and Elisabeth Fagen
Robert and Sharon Froschauer
Betsy Fulnecky
Timothy and Katherine Fulnecky
Susan L. Ganser
Steven and Susan Garboden
Beverly Gillespie
Jonathan and Joelyn Gosse
Richard Gottwald
Marilyn Graber and Peter Miller
Dr. and Mrs. Paul Guentert
Christine and Robert Guth
Lowell and Judy Hamel
Christopher and Fern Hamlin
Earl and Barbara Hansen
Lyle and Carolyn Hardman
Robert and Elizabeth Harkness
Lee Harman
William Harman and Vicki Sue Burley
Deborah Harris
Charles S. Hayes
Timothy Hippensteel
Jane Hoffman
Martha and Scott Hollett
Edna and Robert Homan
Charles Horswell and Judy
Wenig-Horswell
Laddie and Charron Hudson
James D. Hudson
Huizenga Family Foundation
Jane Hunter
Doug and Janice Irvine
Jane and Calvin Jackson
John and Jan Jenkins
Thomas and Nondas Lynn Joyner
Rowan Kelley and Amanda Miller Kelley
Dale and Judith Keltner
Charles and Debra Kent
Maggie Kernan
Vernon King
Jonathan and Edwina Kintner
Charles and Celia Kirk
Scott Kirner and Karen Schneider Kirner
Richard and Susan Klepinger
Gretchen and Richard Koerting
Sandra and Bruce Korenstra
Mollie Krider
Lavonne Kroncke
Stephen and Hillary Lagattuta
Karen Lant
Alexander and Nancy Lappin
Robert and Margaret Laven
Linda and Robert Leliaert

Ann and Gary Linley
Nancy Loewen
Barb and Greg Lorch
Merlyn and Susan Lucas
Denise and George Lynch
Adah M. Lynn
Kent Maden
Dave and Beth Mahar
Jonathan and Deirdre Makielski
Sara Marbach
William A. and Luann Mashke
Gerald Mast
Nathan and Sonya Mateer Rempel
Eugene and Linda Matzat
Linda and Lowell May
Kevin and Marianne McCarthy
Janet and Jeff McGowan
Barbara McHugh
Gary and Carol McKean
Joann and Brian McMahon
Sharon McManus
Shari and Tom Mellin
David and Renee Millar
Brad and Mickey Miller
Douglas Miller
Phillip Mirowski
Dr. and Mrs. Robert Mitchell
Janis L. Monteith
Linda A. Moore
Christine and David Morrow
Elizabeth Mundy
Mary Naquin
Lewis and Belle Naylor
Mark and Kathleen Neal
Lawrence and Dru Neice
Alan and Barbara Neidlinger
Ruth Nieboer
Northern Indiana Hearing Center
Donald E. Nuner, Jr.
Beverly O'Brien
John and Janice O'Leary
Daniel Ormsby
David Lee and Jackie Overton
Steve and Teresa Palmitier
Sue and Philip Panzica
J. Wayne and Lori Parsons
Mary M. Perron
Katherine Perry
Anne Petelle
Scott and Patricia Pier
Bill Piggot
Suzanne Plummer
Michael Pound
Nadine and Floyd Quiggle
Judith Racht
Tami and Randall Raciti
Jennifer and Tyler Ream
Mary and Jan R. Reineke
Rieth-Riley Construction Co., Inc.
Jane H. Robinson
Jeff and Susan Robinson
Gerald and Roberta Rohan
Carol and Michael Rolfs
Paul and Melinda Romanetz
Mary Ann and Randolph Rompolo
Brenda Ropp
Carol and Charles Rosenberg
John W. Rosenthal

Harvey and Janet Ross
Elizabeth Rowe
David and Mitzi Sabato
Margaret and John Scanlan
Darlene Scherer
Edward and Nancy Schultz
Marilyne and William Scully
Jane Sears
Tania Shaum
Dr. and Mrs. Stan Showalter
Barbara and George Smucker
Mark and Vicki Smucker
Beth Snider
Richard and Sharon Sommers
Oliver Songlingco
Tom and Joyce Sopko
Timothy Stabosz
Nancy and Charles Stanton
Laurie Starr and Patrick Flynn
Elizabeth Stauffer
Kathleen Stegmaier
Jolene and Kurt Stiver
Rebecca Stoltzfus and Kevin Miller
Janice Stork
Darrel Tidaback and Laurel Thomas
Mary Tulchinsky
Garry and Margot Tutorow
James and Susan Van Fleit
Betsy Vanderburg
Joyce and William Veldman
Ted and Nancy Waggoner
Denise Wagner
Robert and Kathleen Wall
Joni Walter
Anthony Warning and Martha Peterson
Charles and Mary Weber
John and Hannelore Weber
Phid and Jeff Wells
Nila and Walter Wells
David Wemhoff
Dorothy and Dar Wiekamp*
Michael Wiescher
Jeff and Kelly Wilcoxson
Marcus Winchester
Greg and Pam Wingstrom
Jody Wiseman
James and Joann Wittenbach
Melvin and Elaine Wright
Thad Wright
Anita and Paul Yoder
Douglas and Janette Yoder
Linda Yoder
Elizabeth Zapf
Susan Zook and Kevin Gross

*Deceased Charter Director

** Deceased



1st Source Bank

Antiques Roadshow
Austin City Limits
Great Performances
Inside Indiana Business
Legends: Bill Sexton
NOVA
PBS News Hour
Prime Time Programming

32 Pearls Family Dentistry

Children's Programming

5 Points Apartments

Miscellaneous Programming

Afdent

Children's Programming
Prime Time Programming

Aladdin's Eatery

Miscellaneous Programming

Jeannine and Nafe Alick

Legends: Bill Sexton

Alick's Home Medical

Antiques Roadshow
Lawrence Welk
Legends: The Boling Family
Legends: Bill Sexton

Anderson, Agostino & Keller P.C.

Legends: Bill Sexton

Andrews University

Legends: Loren and Lowell Hamel

John and Katie Anthony

Legends: Bill Sexton

Apple Valley Natural Foods

Legends: Loren and Lowell Hamel

Art Barn School of Art

Miscellaneous Programming

Billie and David Bankoff

Legends: Bill Sexton

Barnes & Thornburg LLP

Legends: Bill Sexton

Beacon Health System

Legends: Bill Sexton

Big Idea Company

Legends: Bill Sexton

John and Jo Broden

Legends: Bill Sexton

Marsha Brooks

Children's Programming

Center for Hospice Care

Legends: Bill Sexton

Center for the Homeless

Miscellaneous Programming

Edward and Carla Chester

Legends: The Boling Family

City of South Bend -

Community Investment

Legends: Bill Sexton

Miscellaneous Programming

City of South Bend -

Community Investment -

Health & Housing

Children's Programming

City of South Bend -

Mayor James Mueller

Legends: Bill Sexton

Robert and Marguerite Clemency

Legends: Bill Sexton

Marilyn Coddens

Miscellaneous Programming

Community Foundation of

Elkhart County

Legends: The Boling Family

Edward, Nancy and Anna

Coppola and Family

Legends: Bill Sexton

Corewell Health

Legends: Loren and Lowell Hamel

Cosimo & Susie's A Bit of Italy

America's Test Kitchen

Lidia's Kitchen

Creative Styles Salon

Legends: The Boling Family

Kevin and Sylvia Culp

Legends: The Boling Family

D & W, Inc.

Business Programming

Dan Berry Insurance

Carl the Collector
Legends: The Boling Family

Jamee Decio

Legends: The Boling Family

Delta Dental

Children's Programming

Aladean DeRose

Legends: Bill Sexton

Joel and Amy Duthie

Legends: The Boling Family

El Campito Child Development Center

Hispanic Heritage Month 2025

El Pescadito Learning Center, Inc.

Hispanic Heritage Month 2025

Elkhart & St. Joseph Counties

Head Start Consortium

Children's Programming

Elkhart Civic Theater

Miscellaneous Programming

Elkhart County Symphony

Miscellaneous Programming

Dr. J. Stuart and Joanne Engelberg

Prime Time Programming

Angie and Phil Faccenda

Legends: Bill Sexton

Family Dental Health

Miscellaneous Programming

Bill and Kristin Fenech

Legends: The Boling Family

Fenner Homes, Inc.

Legends: Loren and Lowell Hamel

Fettig Family Foundation

Legends: Loren and Lowell Hamel

Ann and John Firth

Legends: Bill Sexton

Dan Fitzpatrick

Legends: Bill Sexton

Mary and Jay Flaherty

Legends: Bill Sexton

Foegley Landscape, Inc.

Ken Burns' American Revolution

Joyce and Roger Foley

Ken Burns' American Revolution
Legends: Loren and Lowell Hamel
Legends: Bill Sexton
Rick Steves
South Bend Built by Baseball

Jody and Mike Freid

Legends: The Boling Family
Legends: Bill Sexton
The Gates Family
Legends: Bill Sexton

Dr. Steve Gerber

Legends: The Boling Family

Jacob German

Legends: Bill Sexton

Girls on the Run

Miscellaneous Programming

Maggie and Steve Goldberg

Children's Programming

Graham Family

Legends: Bill Sexton

Gurley Leep Automotive Family

Legends: The Boling Family

Gymnastics Michiana

Children's Programming

Hass Hakim

Legends: The Boling Family

Hayes Towers

Legends: Bill Sexton

Heart of the Warrior Fund - Larry Davis

Children's Programming

Craig Heatherly

Legends: The Boling Family

Helman Sechrist Stoelting Architecture

Legends: The Boling Family

Jennifer and Fred Helmen

Legends: Bill Sexton

Holy Cross Village

Legends: Loren and Lowell Hamel



Douglas Hunt,
former Indiana State Senator
America @ 250

IBEW Local 153
America @ 250
Black History Month 2026

Marybeth Inabnit
Legends: Bill Sexton

Indiana Citizen Education Foundation
Miscellaneous Programming

Indiana Public Broadcasting Stations - Indiana Secretary of State
Miscellaneous Programming

Indiana Public Broadcasting Stations - Indiana State Teachers Association
Miscellaneous Programming

Indiana Public Broadcasting Stations - Lumina Foundation
Prime Time Programming

Indiana Public Broadcasting Stations - Managed Health Services Indiana, Inc.
Children's Programming

Indiana Public Broadcasting Stations - Milk Bank
Children's Programming

Indiana Public Broadcasting Stations - Visit Fort Wayne
Children's Programming

Indiana Trust Wealth Management
Masterpiece
Miscellaneous Programming
PBS News Hour

Jewish Federation of St. Joseph Valley
Legends: Bill Sexton

Pamela Johnson
Great Performances

Jay Jordan
Legends: Bill Sexton

Judd Leighton Foundation, Inc.
Legends: Bill Sexton

Judee's
Legends: Bill Sexton
Women's Programming

Maria Kaczmarek
Children's Programming

Matthew Kahn and Janine Felder-Kahn
Legends: Bill Sexton

Dennis Kaplan
Legends: The Boling Family

Chris and Lorrain Karam
Legends: Bill Sexton

Kurt and Linda Keigley
Legends: Loren and Lowell Hamel

Marijo and Kevin Kelly
Legends: Bill Sexton

Daniel and Margarite Kinsey
Legends: The Boling Family

Lillian Kinsey
Legends: The Boling Family

Koontz Wagner Construction Services
Black History Month 2025

Kosciusko County Community Foundation
Education Counts Michiana

Andy and Joy Kostielney
Legends: Bill Sexton

Kozmo Events
Miscellaneous Programming

Kurt and Tessye Simon Foundation for Temple Beth-El
Hanukkah 2025 Programming

Kurt and Tessye Simon Fund for Holocaust Remembrance
Holocaust Programming

Lake City Bank
American Experience
American Woodshop
Education Counts Michiana
Experience Michiana
Frontline
Miscellaneous Programming
Nature
NOVA
Outdoor Elements
This Old House

Mike Leep, Sr.
Legends: Bill Sexton

Leeper Park Art Fair
Prime Time Programming

Logan Community Resources
Children's Programming
Miscellaneous Programming
Prime Time Programming

Lush Lighting Inc.
Miscellaneous Programming

Don and Joan Lyons
Legends: Loren and Lowell Hamel

Kathy Malone Beeler and Brian Regan
Legends: Bill Sexton

Manny's Sports Bar and Restaurant
Prime Time Programming

Sara Marcus
Children's Programming

Ted and Tracy McCourtney
Legends: Bill Sexton

McDonald Physical Therapy
Legends: Bill Sexton

Vicki McIntire and Charlie Hayes
Legends: Bill Sexton

Mex Express
Prime Time Programming

Michiana Antique Mall
Miscellaneous Programming

Michiana Pickleball Club
Miscellaneous Programming

Mid-City Supply
This Old House

Ken Milani
Legends: Bill Sexton

Montessori Academy Edison Lakes
Children's Programming

Libby Mountsier and Larry M. Davis
Ken Burns' American Revolution
Legends: Bill Sexton

Carmi and Chris Murphy
Legends: Bill Sexton

Musical Arts Indiana
Prime Time Programming

Tom Naquin Automotive Family
Legends: The Boling Family

Naturally Native Nursery
Miscellaneous Programming

Navarre Hospitality Group
Legends: Bill Sexton

Kathleen and Mark Neal
Legends: Bill Sexton

Andy and Liz Nemeth
Legends: The Boling Family

Ninja Golf!
Miscellaneous Programming
Children's Programming

Kathy Nobles, State Farm Agent
Legends: The Boling Family

Mary Pat and Dick Nussbaum
Legends: Bill Sexton

OPS Living
Children's Programming
Miscellaneous Programming

PNC Bank
Economic Outlook

PNC Grow Up Great
PBS Kids

Patrick Industries, Inc.
Legends: The Boling Family



Peacock & Company

Miscellaneous Programming

Pfeifer, Morgan & Stesiak

Amanpour on PBS

Austin City Limits

Legends: Bill Sexton

PBS News Hour

Prime Time

Miscellaneous

Laura and Dr. Dave Pflum

Children's Programming

Barb and John Phair

Legends: Bill Sexton

**Pokagon Band of Potawatomi
and Four Winds**

Legends: Bill Sexton

Potawatomi Zoological Society

Children's Programming

Miscellaneous Programming

Premier Arts - Craig Gibson

Legends: The Boling Family

Miscellaneous Programming

Raclin Murphy Museum of Art

Prime Time Programming

Sheriff Bill Redman

Legends: Bill Sexton

River Bend Hose Specialty

Legends: Bill Sexton

This Old House

River Front Forge

Miscellaneous Programming

**Ronald McDonald House
Charities**

Miscellaneous Programming

Sue and Pat Ruszkowski

Legends: Bill Sexton

Judy and Bob Schmuhl

Frontline

Masterpiece

Amy and Amish Shah

Legends: The Boling Family

Shakespeare at Notre Dame

Miscellaneous Programming

Silver Star Leather

Miscellaneous Programming

Prime Time Programming

**South Bend Children's
Dentistry**

Children's Programming

South Bend Children's Museum

Miscellaneous Programming

South Bend Civic Theatre

Miscellaneous Programming

**South Bend Common Council &
City Clerk Bianca Tirado**

Legends: Bill Sexton

South Bend Cubs

Children's Programming

Miscellaneous Programming

Prime Time Programming

**South Bend International
Airport**

BBC World News

Miscellaneous Programming

PBS News Hour

Weather Channel

**South Bend
Symphony Orchestra**

Miscellaneous Programming

**South Bend Youth
Symphony Orchestra**

Miscellaneous Programming

**Kelly and Brian Stanley
& Mary Jane Stanley**

Legends: Bill Sexton

**Stephanie Krol Public
Relations**

Legends: The Boling Family

Stephenson's of Elkhart

Legends: The Boling Family

Stifel - The Elkhart Group

Legends: The Boling Family

Stitch 'n Time Fabrics

Quilting Programs

Sewing Programs

Joey and Kurt Stiver

Children's Programming

Legends: Bill Sexton

Daniel and Katie Storino

Legends: Bill Sexton

John and Claire Storino

Legends: Bill Sexton

Tristh and Don Storino

Legends: Bill Sexton

The Lauber Kitchen and Bar

Legends: Bill Sexton

The Lerner Theatre

Miscellaneous Programming

Prime Time Programming

The PC Doctor

Business Programming

**The Rex and Alice A. Martin
Foundation**

Dinner & a Book

Legends: The Boling Family

**Nicholas Timm, MD, Deborah
Longworth & Smudge the
Wonder Whippet**

NOVA

Tire Rack

Legends: Bill Sexton

Treat's Squire Shop

Miscellaneous Programming

Tri-State Maintenance

Business Programming

News Programming

University of Notre Dame

Hispanic Heritage Month 2025

Legends: Bill Sexton

**University of Notre Dame
College of Science**

Miscellaneous Programming

Prime Time Programming

Science Programming

Village at Winona

Children's Programming

Dinner & a Book

History Detectives

Miscellaneous Programming

Visit Fort Wayne

Children's Programming

WVPE

PBS News Hour

Prime Time Programming

Washington Week

**Wales Wealth Management
Group**

Legends: Loren and Lowell Hamel

**William K. Warren & Andrew
N. Warren**

Legends: Bill Sexton

Welch Packaging

Legends: The Boling Family

**Carolyn Woo and David
Bartkus**

Legends: Bill Sexton

YMCA of Greater Michiana

Children's Programming

Miscellaneous Programming

YWCA - North Central Indiana

Miscellaneous Programming

Roberta and Ben Ziolkowski

Legends: Bill Sexton



PBS MICHIANA BUSINESS CLUB

Chairman's Club (\$1,000)

Lyons Industries, Inc.
Midwest Cardiovascular Research &
Education Foundation

President's Club (\$500)

Sylvester & Tessie Kaminski
Foundation
Stephen K. Woods, P.C.

Corporate Club (\$250)

THK Law, LLP

PBS MICHIANA KIDS CLUB

Chick-Fil-A
Mossberg & Company
Nothing Bundt Cakes
St. Joe County Public Library
Sylvester & Tessie Kaminski
Foundation

**PRIVATE AND CORPORATE
FOUNDATION GRANTS**

Anonymous (2)
The Bowsher Booher Foundation
Community Foundation of Elkhart
County
Community Foundation of St.
Joseph County
Crossroads United Way
Dekko Foundation
Fred Rogers Productions
John W. Anderson Foundation
Kosciusko County Community
Foundation, Inc.
The Pokagon Fund
Stanley A. and Flora P. Clark
Memorial Community Trust
Foundation

GENERAL OPERATING GRANTS

1st Source WNIT Fund - CFSJC
Emil Smolek Endowment Fund -
CFPC
The Oliver & Cunningham Family
Memorial Trust Foundation
WNIT Public Television Fund - CFEC
WNIT Public Television Fund -
CFSJC
WNIT Public Television Fund -
MCCF

PROMOTIONAL SUPPORT

Alpha Graphics
Duley Press
Express Press
Rink Printing

Information correct as of release date. For a
full listing of program sponsors, please contact
WNIT.

2026
starts on
a high note

www.southbendsymphony.org

574-232-6343



Save your seats!

January

11 – *Musician's Favorites: From Jennet*
15 – *Celebration for a King*
27 – *Happy Hour*
30 – *Listen & Learn*
31 – *Tchaikovsky's Symphony No. 6*

February

14 – *Love, Symphony + The Bergamot*
27 – *Listen & Learn*
28 – *Beethoven's Eroica*



**SOUTH BEND
SYMPHONY
ORCHESTRA**
Alastair Willis, Music Director

PBS Michiana WNIT

Ways to Watch



Did you know that you can now watch PBS Michiana - WNIT in more ways than ever? We have added live streaming options and other services to better enable you to watch what you want from WNIT, when you want to and where you want to.

PBS Michiana - WNIT **Channel 34.1**

34.1 - Over the Air
Comcast - 10, 191, 1035
26 in LaPorte and Valparaiso
Dish - 34 or 1034
DirecTV - 34 or 1034
AT&T U-verse - 34 or 1034
Mediacom - 704



[Live on our website](#)

[On demand](#)

[PBS video app](#)

Stream 4000+ PBS/PBS Michiana - WNIT local shows on demand. (FREE)



PBS Michiana Passport

Extended access to 1,500+ episodes.
PBS Michiana Passport is an added benefit of station membership.

🍏 iOS 🍏 tv Roku android 📺 SAMSUNG VIZIO

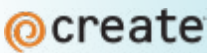
[YouTube](#)

YouTube TV

Hulu + Live

Amazon Prime Video

PBS Michiana - WNIT **Channel 34.2**

34.2 - Over the Air 
Comcast - 371
Mediacom - 120



PBS Michiana - WNIT **Channel 34.3**

34.3 - Over the Air
Comcast - 1159
Mediacom - 694
Charter - 196
Quality Cablevision - 34.3
Sister Lakes Cable TV - 34.3
Acme Communications - 36
Winamac CATV - 34
Pulaski IPTV - 36
RTC1 - 9
DirecTV - 288

[Livestream](#)

WNIT Channel Guide

	COMCAST			DISH/DIRECTV OR AT&T U-VERSE *		MEDIACOM		
	SD	HD	SD 34.2	SD	HD	SD	HD	SD 34.2
INDIANA								
Argos	-	-	371	34	-	4	704	120
Bourbon	-	-	371	34	-	4	704	120
Bremen	-	-	371	34	-	4	704	120
Bristol	10	191	371	34	-	-	-	-
Culver	-	-	371	34	-	4	704	120
Elkhart	10	191	371	34	-	-	-	-
Goshen	10	191	371	34	-	-	-	-
Jefferson Township	10	191	371	34	1034	-	-	-
Knox	-	-	371	34	1034	4	704	120
LaGrange County	-	-	371	34	1034	3	704	-
Lakeville	-	-	371	34	1034	4	704	120
LaPaz	-	-	371	34	1034	4	704	120
LaPorte (city)	-	26	371	34	1034	-	-	-
LaPorte County (Eastern)	10	191	371	34	1034	-	-	-
LaPorte County (Western)	-	26	371	34	1034	-	-	-
Leesburg	-	-	-	-	-	4	704	120
Michigan City	-	26	371	34	1034	-	-	-
Middlebury	10	191	371	34	1034	-	-	-
Milford	-	-	-	-	-	4	704	120
Mishawaka	10	191	371	34	1034	-	-	371
Nappanee	10	191	371	34	1034	4	704	120
North Judson	10	191	371	34	1034	4	704	120
North Liberty	10	191	371	34	1034	4	704	120
North Webster	-	-	-	-	-	4	704	120
Piercetown	-	-	-	-	-	4	704	120
Plymouth	10	191	371	34	1034	-	-	-
Porter County	-	26	371	34	1034	-	-	-
Rochester	10	191	371	34	1034	-	-	-
South Bend	10	191	371	34	1034	-	-	371
Syracuse	-	-	371	34	1034	4	704	120
Tippecanoe	-	-	-	-	-	4	704	120
Valparaiso	-	26	371	34	1034	-	-	-
Walkerton	-	-	371	34	1034	4	704	-
Wakarusa	10	191	371	34	1034	-	-	-
Warsaw	10	191	371	34	1034	-	-	-
Winamac	10	191	-	-	-	-	-	-
MICHIGAN								
Benton Harbor	10	191	371	34	1034	-	-	-
Berrien Springs	10	191	371	34	1034	-	-	-
Buchanan	10	191	371	34	1034	-	-	-
Cassopolis	10	191	371	34	1034	-	-	-
Constantine	10	191	371	34	1034	-	-	-
Dowagiac	10	191	371	34	1034	-	-	-
Edwardsburg	10	191	371	34	1034	-	-	-
New Buffalo	10	191	371	34	1034	-	-	-
Niles	10	191	371	34	1034	-	-	-
Sister Lakes	10	191	371	-	-	-	-	-
Stevensville	10	191	371	34	1034	-	-	-
St. Joseph (city)	10	191	371	34	1034	-	-	-
Three Rivers	11	-	-	-	-	-	-	-
White Pigeon	10	191	371	34	1034	-	-	-

CHARTER CABLE IN STURGIS, MI HAS REASSIGNED ITS CHANNELS

Original positions are: Base Tier

WNIT 34.1, #2. New assignment: #12.

WNIT 34.1, #781. New assignment: #785.

WNIT 34.1, #135. New assignment: #195.

After Charter's conversion to all-digital, station will continue to be available to ALL Charter customers served by the above lineups in a digital format on the basic tier of service.

ROKU

WNIT is excited to announce the much-anticipated PBS and PBS KIDS channels are now available on Roku! The PBS channel features videos from popular PBS programs. Once you activate the PBS channel and choose WNIT as your local station, you can stream content from WNIT's local productions, as well as short, web-original videos from Webby Award-winning PBS Digital Studios. With the arrival of the PBS KIDS channel, junior streamers can enjoy full-length episodes and clips from great shows including *Curious George*, *Daniel Tiger's Neighborhood*, *Dinosaur Train*, *Super WHY!* and *The Cat in the Hat Knows a Lot About That!*

Michiana Public Media WNIT



Michiana

**PBS Michiana - WNIT
Channel 34.1**



**Michiana
create**

**PBS Michiana - WNIT2
Channel 34.2**



**PBS Michiana WNIT3
PBS KIDS 24/7
Channel 34.3**



Visit us at wnit.org

MAILING ADDRESS

WNIT Center for Public Media
PO Box 7034
South Bend, IN 46634-7034

STREET ADDRESS

300 West Jefferson Boulevard
South Bend, IN 46601

Phone: (574) 675-9648

Email: wnit@wnit.org

©2026 Michiana Public Broadcasting Corporation Statement of Frequency: WNIT PUBLIC TELEVISION PLANNER (USPS 103-650 ISSN 1523-9373) is digitally published monthly and when printed is published bi-monthly by The Michiana Public Broadcasting Corporation, a non-profit corporation in the State of Indiana at 300 West Jefferson Boulevard, South Bend, IN 46601. Periodical postage paid at South Bend, IN and additional mailing offices. POSTMASTER: Send address changes to P.O. Box 7034, South Bend, IN 46634-7034.

Editor-in-Chief: Cindy McCraner.

Editor & Designer: Ginger Santiago.

Coming in March!

LEGENDS OF MICHIANA

THE VELDMAN FAMILY

From Immigrant Roots to Community Legacy

Premieres Thursday, March 26th, 2026 at 8pm - Only on PBS Michiana – WNIT



MASTERPIECE®

