

## LET'S EXPLORE AMERICA



PBS Michiana  
wnit

Day of Giving  
May 21, 2026

Details on Page 3

PBS  
KIDS

# ACROSS AMERICA

Amazing Kids.  
Amazing Places.

Watch Now  
on PBS KIDS



## Board of Directors

### Chair

Susan Ohmer, Ph.D.

### Treasurer

Brian Inniger

### Secretary

Duane Wilson

### Directors

Dru Buck  
Kyra Clark  
Lynn Haller  
Lowell Hamel, M.D.  
John Lloyd  
Dr. Christine Maziar  
John Miller  
Pat Moody  
Gary Morseau  
Mike Pound  
Cindy Sachire  
James Summers  
Jill Long Thompson  
Don Wycliff  
Linda Yoder  
John Zeglis

### President and General Manager

Amanda Miller Kelley

### Charter Directors

Arthur J. Decio\*  
Jerry Hammes  
Ernestine M. Raclin\*  
Jane Warner\*  
Dar Wiekamp\*

### Honorary Life Directors

Robin Douglass  
Mary Louise Miller\*\*  
Carmi Murphy  
Bill Schmuhl  
Thomas Slager\*\*

\*Deceased Charter Director

\*\*Deceased



**Amanda Miller Kelley**  
**President**  
**and General Manager**  
**PBS Michiana – WNIT**

May - June 2026

Friends—

The other day, I was watching my three-year-old crouched over a crack in the sidewalk, completely still. He had that look on his face—that total, unselfconscious absorption in the world—as he watched an ant carry something three times its size across the pavement. In that moment, the rest of the world didn't exist. It was just a little boy and a very busy insect.

It's a kind of curiosity that doesn't realize it's "learning" because it just feels like living. I see it every day in my own children, and it's why I take our PBS KIDS mission so seriously. I'm not just looking at programming from the perspective of a station GM. I'm looking at it as a parent. And as a parent, I have such a deep appreciation for what PBS KIDS brings to our community. It's why our local team cares so much about taking these lessons off the screen and into our neighborhoods.

As we move into warmer weather, we're leaning into that sense of discovery. Our education team has just launched a [new resource](#), a toolkit for those "why?" and "how?" moments that pop up over a Michiana summer. We'll be out and about for Kids to Parks Day and over at Four Winds Field for Be My Neighbor Day, making sure that curiosity has plenty of room to roam.

Of course, that sense of wonder isn't just for the preschoolers. That's why I'm so looking forward to David Attenborough's *Life on Earth*. He looks at a rainforest canopy with the same wide-eyed excitement that my son has for that sidewalk ant. It's the kind of programming that invites you to sit still and take it in.

If you want to go deeper than just the broadcast schedule, PBS Passport is where the real depth is. It's home to full libraries of everything from *Masterpiece* dramas to history and cooking shows, and a great place to spend more time with the stories you love.

To keep all of this—the local events, the digital resources, the shows we all love—we're holding our annual Day of Giving on May 21. This year, we have a \$110,000 matching pool, the largest we've ever had. It's an ambitious goal, but during this window your support will go twice as far in keeping the station strong for everyone.

I hope you find some time this month to step outside and notice something as small and awe-inspiring as that single ant on the sidewalk. I'll see you out there.

With gratitude,

Amanda Miller Kelley  
President & General Manager



# Day of Giving

**May 21, 2026**

**Thank you!** Your support of PBS Michiana - WNIT means so much to us. It's what keeps trusted PBS programs on the air, supports local storytelling, and connects kids and families in our community with learning resources they can count on.

This past year has brought some real challenges for us, including the loss of both state and federal funding. Thanks to people who care about this station, we've been able to navigate that in the short term. Now the focus is on keeping that footing in the year ahead.

***That's why this Day of Giving 2026 matters so much.***

Over the past eight years, friends and viewers like you have helped raise more than \$540,000 through Day of Giving efforts. Now we come together again for WNIT's 9th Annual Day of Giving on May 21st with a huge opportunity in front of us.

A group of generous donors, including Don and Joan Lyons, the Berrien Community Foundation, Marijke Brown, Susan Ohmer and Donald Crafton, and others have committed \$110,000 in matching funds. It's the largest challenge gift we've ever had, and every dollar will be matched. *Please consider making a gift to keep WNIT strong now and in the future.*

This match came together in a number of ways, including one-time gifts, multi-year pledges, monthly giving, qualified charitable distributions, and legacy giving. If you'd like to talk through what approach makes the most sense for you, we're always glad to help.

To make your gift, visit [wnit.org/dayofgiving](https://wnit.org/dayofgiving), contact Cindy McCraner at 574-675-9648 x330 or [cmccraner@wnit.org](mailto:cmccraner@wnit.org) or Laura Atkins at 574-675-9648 x311 or [latkins@wnit.org](mailto:latkins@wnit.org). Gifts received by **May 21, 2026** will be counted toward the challenge gift match. Please **note "WNIT Day of Giving" on your check** when sending your gift by mail.

**Thank you for helping PBS Michiana - WNIT  
to educate, inspire and unify the people and communities we serve.**



**Great Performances: Suffs**  
Premieres Friday, May 8 at 9pm  
on PBS Michiana WNIT and the PBS app

Created by Tony Award winner Shaina Taub, this musical recorded from Broadway tells the story of the American suffragist movement and the remarkable friendships, heartbreak, and action that brought women together—or, in some cases, tore them apart.



**THE AMERICAN REVOLUTION** examines how America's founding turned the world upside-down.

Thirteen British colonies on the Atlantic Coast rose in rebellion, won their independence, and established a new form of government that radically reshaped the continent and inspired centuries of democratic movements around the globe.



**PBS America @ 250**

Join us in commemorating the country's 250th Anniversary with content exploring how the United States came together, showcasing its rich history, treasured artifacts, and performances and art that define America.

As part of PBS America @ 250, PBS LearningMedia will help connect teachers and students to educational resources and learning events that draw from the broad range of new programming. Through curated, media-rich collections aligned to curriculum, PBS LearningMedia will help educators and students engage with this milestone moment in our nation's history, inviting reflection, learning, and deeper understanding of how our past continues to shape our present.



# SOUTH BEND CUBS 2026 SCHEDULE



## APRIL

SUN	MON	TUES	WED	THURS	FRI	SAT
			1	2	3 7:05PM	4 4:05PM
5 2:05PM	6	7	8	9	10	11
12	13	14	15 7:05PM	16 7:05PM	17 7:05PM	18 4:05PM
19 2:05PM	20	21	22	23	24	25
26	27	28 6:05PM	29 11:05AM	30 7:05PM		

## MAY

SUN	MON	TUES	WED	THURS	FRI	SAT
					1 7:05PM	2 4:05PM
3 2:05PM	4	5 6:05PM	6 11:05AM	7 7:05PM	8 7:05PM	9 4:05PM
10 2:05PM	11	12	13	14	15	16
17	18	19	20	21	22	23
24	25	26 6:05PM	27 11:05AM	28 7:05PM	29 7:05PM	30 7:05PM

## JUNE

SUN	MON	TUES	WED	THURS	FRI	SAT
	1	2	3	4	5	6
7	8	9 7:05PM	10 7:05PM	11 7:05PM	12 7:05PM	13 7:05PM
14 2:05PM	15	16	17	18	19	20
21	22	23 7:05PM	24 7:05PM	25 7:05PM	26 7:05PM	27 7:05PM
28 2:05PM	29	30				

## JULY

SUN	MON	TUES	WED	THURS	FRI	SAT
			1	2	3	4
5	6	7	8	9	10	11
12	13	14	15	16	17 7:05PM	18 7:05PM
19 2:05PM	20	21 7:05PM	22 12:05PM	23 7:05PM	24 7:05PM	25 7:05PM
26 2:05PM	27	28	29	30	31	

## AUGUST

SUN	MON	TUES	WED	THURS	FRI	SAT
2 2:05PM	3	4	5 7:05PM	6 7:05PM	7 7:05PM	8 7:05PM
9 2:05PM	10	11	12	13	14	15
16	17	18	19	20	21	22
23 2:05PM	24	25	26	27	28	29
30	31					

## SEPTEMBER

SUN	MON	TUES	WED	THURS	FRI	SAT
		1 7:05PM	2 7:05PM	3 7:05PM	4 7:05PM	5 7:05PM
6 2:05PM						

**HOME** **AWAY** **FIREWORKS**

[SOUTHBENDCUBS.COM](http://SOUTHBENDCUBS.COM)

**(574) 235-9988**

All game times in Eastern Time and subject to change.

# FAMILY FUN



**ALL SEASON LONG  
FOUR WINDS FIELD JUST GOT  
EVEN BETTER! COME SEE THE  
NEW RENOVATIONS IN ACTION!**

FOUR WINDS FIELD



**SCAN THE  
QR CODE FOR  
MORE  
INFORMATION**





**FIND YOUR FUN.  
FIND YOUR CAMP.**

**» REGISTER TODAY!  
YMCAGM.ORG/SUMMER**

Bring your kids to the YMCA O'Brien Center over summer break for fun, games, and physical activity in a safe and supportive environment! Campers will explore arts and crafts, group games, STEM, rock wall, archery, and more!

**For a better us.®**

**YMCA O'BRIEN CENTER  
321 E. WALTER ST. SOUTH BEND, IN 46614**

Proudly supporting  
PBS Michiana WNIT-TV  
in its mission to educate,  
inspire, and unify.

◆  
**INDIANA TRUST**  
Wealth Management

*Legacies Built On Trust*



*Exceptional service.  
Every client, every time.*

IndTrust.com



## Modern Living, *Timeless Values*

Brand new independent living townhomes  
and apartments coming Fall 2027!

Secure your spot on our Priority Program  
with a fully refundable \$1,000 deposit, and  
receive exclusive updates and benefits.



Scan or call  
**(574) 251-2235**  
to learn more  
and get started!



## Wild Rose Moon Hour



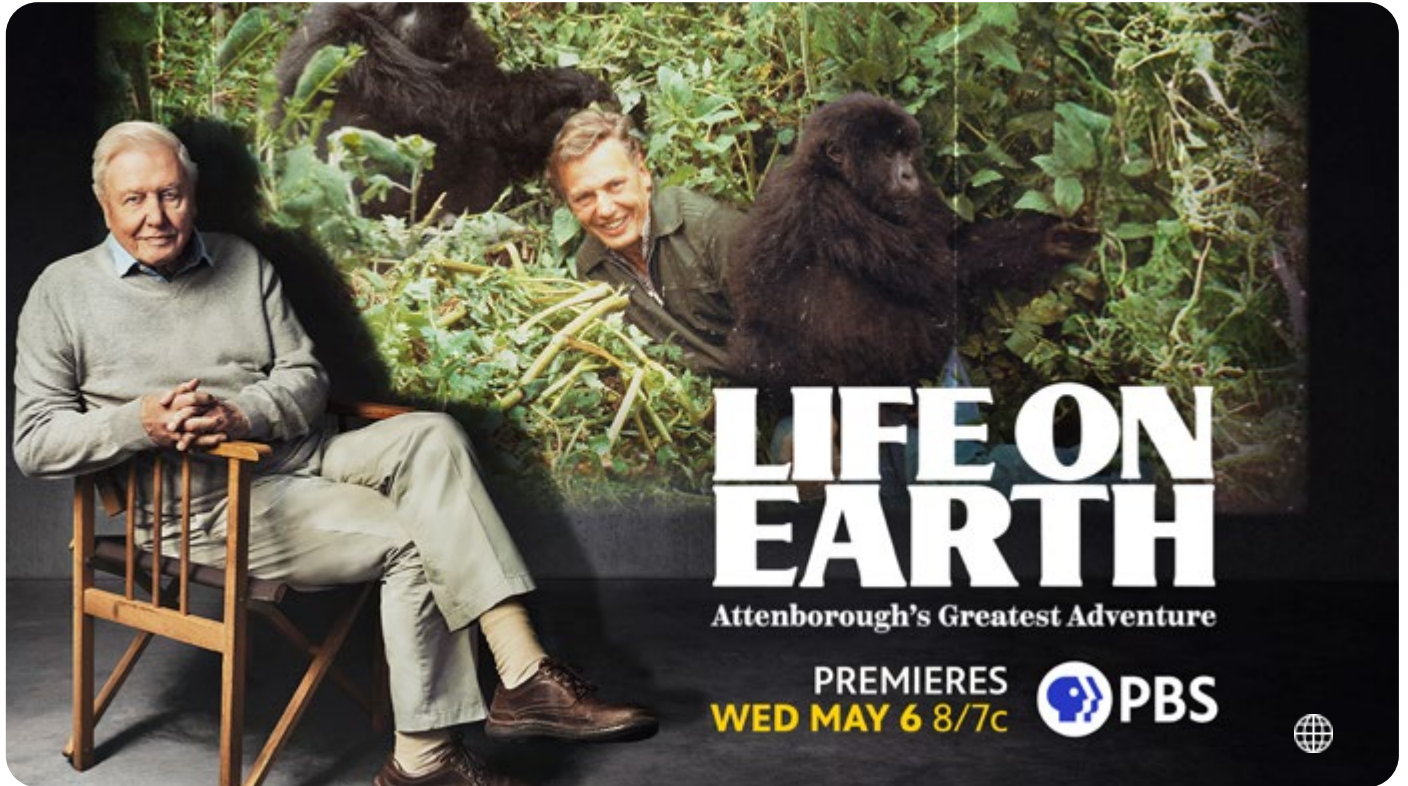
(Plymouth, Indiana)  
Amanda Miller Kelley,  
President and General  
Manager of PBS Michiana  
WNIT, competes against  
Mayor James Mueller  
of the City of South  
Bend on the Wild Rose  
Moon Hour's gameshow  
"Shoot the Moon."

The broadcast features  
a fantastic performance  
by Kennedy's Kitchen.

**The two-hour special  
airs Monday, May 25  
at 10pm on 34.1**

# Contents - Links to Pages





In 1976, Sir David Attenborough embarked on an ambitious three-year global odyssey to film *Life on Earth*, an innovative documentary of unprecedented scale. Attenborough and his team traveled to 40 countries to document over 600 species and faced extraordinary challenges along the way, including a coup in the Comoros, gunshots in Rwanda, and threats from Saddam Hussein's army in Iraq. Written and presented by Attenborough, *Life on Earth* set out to "tell the greatest story in all the world": how life on our planet evolved.

*Life on Earth* was the first series to combine cutting-edge camera technology and techniques. Time-lapse, microphotography, and filming speeds of up to 10,000 frames per second were used to capture animal movement in ways never before seen — from striking rattlesnakes to leaping lemurs and hovering hummingbirds. New Kodak film stock allowed the team to produce

some of the sharpest and most colorful wildlife footage at the time, while the new Canon 300 lens enabled the camera crew to film at dawn and dusk and document new animal behavior previously thought impossible to record.

*Life on Earth* became the first worldwide natural history blockbuster, mesmerizing viewers with incredible photography and transforming public perception of the natural world. The documentary details how the team captured some of the series' most astounding moments — a lioness ferociously taking down a wildebeest, the rare moment a male Darwin's frog "gives birth" by mouth, and Attenborough's unforgettable encounter with mountain gorillas in Rwanda, often voted one of the greatest television moments of all time.

Upon its broadcast on PBS in 1982, *Life on Earth* quickly became a global phenomenon, commanding

the attention of over 500 million people in more than 100 territories. Its extraordinary success launched five decades of ambitious wildlife storytelling and cemented Attenborough's legacy as the most successful and influential wildlife filmmaker of our time.

Fifty years after production began, and in celebration of Attenborough's 100th birthday, *LIFE ON EARTH: ATTENBOROUGH'S GREATEST ADVENTURE* offers rare, behind-the-scenes insight into the making of the groundbreaking series. Featuring exclusive interviews with Attenborough and his original crew, the special captures the triumphs and setbacks of filming the series during a pivotal era in television history, when jet travel and color filming were relatively new.

**Premieres Wednesday, May 6, 2026,  
8:00-9:00 p.m. ET**

# PBS Michiana WNIT Weekly Programming

## Dinner & a Book



April Lindinsky  
& Gail Martin



From the bookshelf to the kitchen, we return with new recipes from best-sellers.



Visit Dinner & a Book on our website



Saturdays @ 10:30am (34.1)  
Thursdays @ 7:30pm (34.1)



Rowan Jacobson's *Wild Chocolate: Across the Americas in Search of Cacao's Soul* explores the rich history, complex economics and compelling characters behind the bean-to-bar chocolate world. April Lidinsky welcomes Hans Westerink, the founder of Violet Sky Chocolate for a discussion about the bean-to-bar chocolate industry.

Airs May 16 at 10:30am

Air date	Title	Author	Guest
5.2.26	<i>The Art of Resonance</i>	Anne Bogart	Aaron Nichols
5.9.26	<i>I Never Thought of It That Way</i>	Mónica Guzman	Marchelle Petit
5.16.26	<i>Wild Chocolate: Across the Americas in Search of Cacao's Soul</i>	Rowan Jacobsen	Hans Westerink
5.23.26 Memorial Day Reair	<i>The Island of Missing Trees</i>	Elif Shafat	Laura Horst
5.30.26	<i>What Kind of Paradise</i>	Janelle Brown	Amanda Miller Kelley
6.6.26	<i>The Place of Tides</i>	James Rebanks	Connie Peterson-Miller

“Good food, good friends, good books, make for a very good life.”

# PBS Michiana WNIT Weekly Programming



Rev. James Summers



Sam Centellas



Our show highlights positive examples of learning across formal and informal spaces in our region.



Visit Education Counts on our website



Wednesdays @ 7:00pm (34.1)  
& Sundays @ 1:00pm (34.1)



## Being a Parent

### Parenting Classes at WAIR

Just like the stages of childhood, there are stages of parenting too! The parenting classes at We All in Recovery (WAIR) provide a support group that's open to the community. The group discusses ways to help build strong foundations for both parents and their children.



## Child Safety

### Celebrating Child Safety with a Carnival!

Pulaski County held a Child Safety Carnival in recognition of Child Abuse Prevention Month. The event featured family activities and educational resources to help keep children safe and supported.



**The EdCounts Podcast** explores the wide world of education through conversations with experts! Science, school choice, language, mental health, you name it - our goal is to help you learn about topics and trends that matter to you.

[wnit.org/educationcounts/podcasts.html](http://wnit.org/educationcounts/podcasts.html)

# PBS Michiana

## WNIT Weekly Programming

EXPERIENCE  
MICHIANA

Courtney Jorgensen

Irish Dave

In Loving Memory of  
Kelly Burgét

We are out in our communities showcasing those things that make our region unique.



Visit Experience Michiana on our website



Thursdays @ 7:00pm (34.1)  
& Saturdays @ 5:30pm (34.1)



All aboard for a wild ride on this week's *Experience Michiana*! Courtney visits the Potawatomi Zoo to check out their brand new train that takes guests all around the zoo. Executive Director Josh Sisk shares how the new electric train supports the zoo's mission of conservation, and how every ticket helps provide year-round care for the animals. The zoo is now open for the season, so grab your ticket and enjoy a fun ride the whole family will love!



Discover what makes Elkhart County so special on this week's *Experience Michiana*! We team up with the Elkhart County Convention & Visitors Bureau as Dave chats with Terry Mark about their "Well Crafted" video series — highlighting the people, places, and experiences that make the area unique. This month, we're featuring Main Street Roasters in Nappanee, a local favorite serving up great coffee and even better community vibes. Be sure to tune in as we spotlight a new "Well Crafted" story each month!

# PBS Michiana

## WNIT Weekly Programming



Evie Kirkwood



OE is about nature, the environment, and the outdoors in Michiana, in partnership with St. Joseph Co. Parks.



Visit Outdoor Elements on our website



Sundays @ 9:00am (34.1)  
& Wednesdays @ 7:30pm (34.1)



## Take a Hike!

Viewers can join host Evie Kirkwood and explore the region's parks, lakes, forests, dunes and more.

Along the way Evie and guests share their considerable knowledge on things like bald eagles, coyotes, grass frogs, acorns, paw paw, and native and invasive species to name a few.

*Outdoor Elements* webisodes can be found on the *Outdoor Elements* web page and also on Facebook and Youtube every Wednesday. Join us for our 20th year!

*with Evie Kirkwood*



Visit Crossroads  
on our website



Crossroads will air as a  
broadcast on Monday, May 18  
at 7:30pm.



Joy Blooms transforms donated flowers into redesigned bouquets to share beauty and kindness with others.

Joy Blooms shares beauty and kindness by transforming donated flowers into "redesigned" bouquets for local residents. They rescue blooms from weddings, events, and retailers to create a positive emotional lift for healthcare and retirement communities. By recycling vases and composting trimmings, Joy Blooms ensures their mission of affirming value is as sustainable as it is joyful.



### South Bend TradeWorks

South Bend TradeWorks is a nonprofit organization dedicated to preserving historic buildings, restoring their vitality, and educating the community to continue this important work. Through rescuing and salvaging materials, operating a local renovation resource shop, and training people of all ages in historic building trades, they work to protect and celebrate the community's history and culture.

*Crossroads highlights inspiring stories from across the Michiana region. It showcases unique individuals, organizations, nonprofits, and businesses that are making a meaningful, positive impact in their communities. Through these stories, Crossroads aims to inform, empower, and celebrate the people who are working to make a difference.*

# @create

WE ARE EVOLVING  
CREATE programs are now on  
channel 34.2 **24 hours per day!**



## About Create® TV

Often called "do-it-yourself" or DIY, the program genres seen on **Create® TV** include viewers' favorite public television series and specials on food, travel, home & garden, arts & crafts, fitness and other lifestyle interests. The programs seen on **Create** come from American Public Television, The National Educational Telecommunications Association (NETA), Public Broadcasting Service (PBS), and a handful of local public television stations across the country.

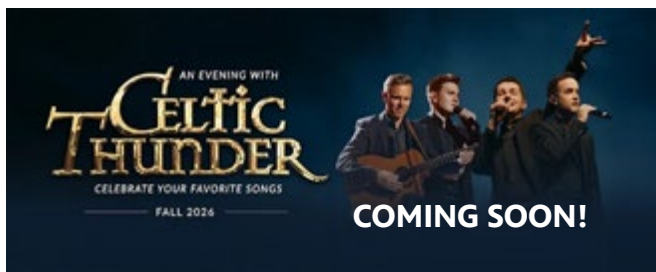
On any given day, **Create** treats DIY buffs to ***This Old House***, ***Volunteer Woodworker*** and ***A Craftsman's Legacy***. Food fans will feast on ***America's Test Kitchen***, ***Lidia's Kitchen***, ***Pati's Mexican Table*** and ***Christopher Kimball's Milk Street Television***. Wandering souls will find themselves captivated by ***Rick Steves' Europe***, ***Samantha Brown's Places to Love*** and ***Joseph Rosendo's Steppin' Out***. Budding artists and crafters will appreciate ***The Best of the Joy of Painting***, ***View Finders*** and ***Fit 2 Stitch***.

Always on 34.2

# WNIT Membership Corner



Really enjoy Channel 34.2 Create, and love all of the cooking shows.  
*Margaret and Bruce  
Edwardsburg, Michigan*



## An Evening with Celtic Thunder Thursday, September 24 at 7:30pm Blue Gate Performing Arts Center Shipshewana, Indiana

Over the years, Celtic Thunder has been home to some of the finest vocalists in the world, and An Intimate Evening with Celtic Thunder will see Emmet, Damian, Neil and Ronan perform some of Celtic Thunder's greatest songs and welcome some old friends along the way. Longtime fans will be thrilled to see their favorite voices come together, blending their talents in an atmosphere of warmth and nostalgia. Tune in during our June membership campaign for more information on reserving your tickets to this amazing concert experience.



## Simplify Your Giving with EFT Donations!

PBS Michiana – WNIT now offers the option of using Electronic Funds Transfer (EFT) to make your monthly sustainer donation. With EFT, your monthly donations are automatically deducted straight from your bank account on the 5th of each month, saving you time and hassle. No more calling to change your card number or expiration date. By opting for EFT, you also eliminate transaction fees associated with cards, ensuring more of your donation supports PBS Michiana programming. Join the movement toward eco-friendly giving by supporting PBS Michiana - WNIT through electronic means. To change your donation method please contact Laura at 574-675-9648 x311 or [latkins@wnit.org](mailto:latkins@wnit.org). Thank you!

## THERE'S ANOTHER WAY TO GIVE. DONATE PROPERTY.

We accept residential and commercial property, land, vacation cottages, rentals, and estates.



Got a property that's just... sitting there? Turn it into something amazing! WNIT has teamed up with CARS (Charitable Adult Rides & Services) to make donating real estate easier than ever and your gift directly supports PBS Michiana - WNIT. We happily accept all kinds of properties, including land, homes, even commercial spaces, anywhere in the country, as long as there's equity. Behind on taxes? Still have a mortgage?

Repairs piling up? No worries, we take care of loans, liens, commissions, and even closing costs and you could possibly enjoy a nice tax deduction, too.

Ready to make an impact? Call 844-277-HOME or visit [wnit.careasy.org/real-estate-donation](http://wnit.careasy.org/real-estate-donation) to get started.





# PBS Michiana - WNIT KIDS Education Local Impact & Local Engagement



**Leah Steinhiser**

LSteinhiser@WNIT.ORG

574-675-9648 x328

Leah Steinhiser is your Educational Engagement Liaison for PBS Michiana—WNIT, serving Northern Indiana and Southwest Michigan.



**Liz Deford**

LDeford@WNIT.ORG

574-675-9648 x 309

Liz Deford is the Educational Engagement Assistant responsible for outreach to Elkhart, Noble and LaGrange Counties.



*For this month's WNIT Fandom article, we had a short Q&A with our education team Leah Steinhiser and Liz Deford. They are working very hard to bring our educational resources to the Michiana community and are available for a variety of events.*

**Tell us anything you want to about you—such as your background in education, why you love PBS or PBS KIDS and came to work with us—something interesting that viewers would like to know.**

**Leah:** With nearly 25 years of combined experience as a classroom educator and public librarian, I am fortunate to have had wonderful opportunities to share my love of literacy and lifelong learning. While working as a librarian, I found my passion for community outreach and engagement. When I was presented with the opportunity to work for our local PBS Station, I was beyond excited! I grew up on PBS shows as did my children. It easy to promote such thoughtfully curated content designed to be developmentally appropriate for children, and it is amazing to be able to connect our community to the amazing, free educational resources PBS Michiana—WNIT has to offer. I love being able to support our community with fun and engaging programs that foster learning.

**Liz:** I've worked in education for 4 years and working at PBS is a dream come true! Growing up as a PBS Kid you never forget your favorite shows and what they taught you, and now I get to be a part of the world's largest classroom in a new and impactful way.

**What exactly is an Educational Engagement Liaison or Assistant, and can you give us an example of how it works?**

**Leah:** As the Educational Engagement Liaison for PBS Michiana—WNIT, I help facilitate awareness of our free educational programming and resources, and remove barriers to accessing it by meeting people where they are in the community. This can include hosting resource tables at community events, or presenting engaging programs in schools or libraries.

**Liz:** As an Educational Engagement Assistant I work as a bridge between PBS and the community. My job is to let our community know that PBS is more than television but that it's a channel of free resources that can help support them.

**What are you looking forward to accomplishing with PBS Michiana WNIT Education in the future?**

**Leah:** I look forward to connecting with more educators in our community. Teaching is a tough and meaningful job, and our free, state-aligned lessons can facilitate learning in the classroom with quality content while easing the workload of teachers.

**Liz:** I look forward to helping support as many families, educators, and community leaders as possible through my position. I want to see positive change in my community and that starts by supporting it the best that I can.

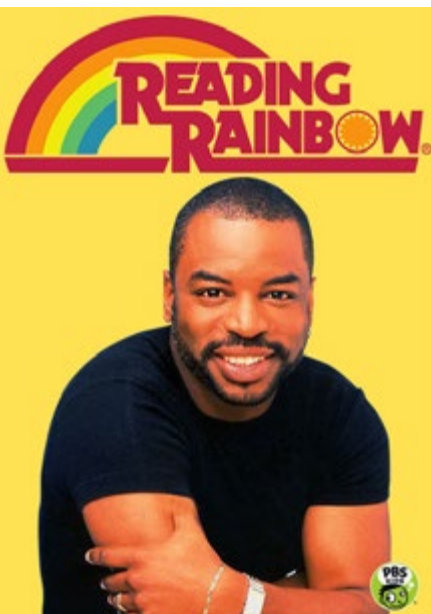
**Go to [PBS Michiana Education](#) to learn more!**

# WNIT *throwback*



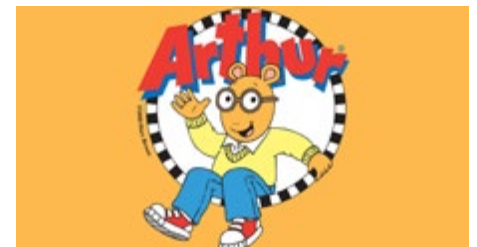
We want to hear from you! Send your stories, plays, games and ZOOM ideas to **ZOOM** Box 260, Boston, Mass. 02134.

And don't forget to send a SASE ("Say-ase"): That's an envelope with a stamp, your name, address and zip code. Then we can send you a ZOOM card. Write to us -- we love hearing from you!



For this month's *WNIT* throwback, we have brought you a video playlist of some of the most memorable old school PBS KIDS' opening theme songs. Enjoy!

- Sesame Street (1969–present)
- Mister Rogers' Neighborhood (1968–2001)
- Arthur (1996–2022)
- Reading Rainbow (1983–2006)
- Wishbone (1995–1997)
- The Magic School Bus (1994–1997)
- Zoboomafoo (1999–2001)
- Big Blue Marble (1974 - 1983)
- Dragon Tales (1999–2005)
- Ghostwriter (1991–1995):
- Between the Lions (1999–2011)
- 3-2-1 Contact (1980 - 1988)
- The Electric Company (1971–1977)
- Where in the World Is Carmen Sandiego? (1991–1996)
- Lamb Chop's Play-Along (1992–1997)
- Big Comfy Couch (1992–2013)
- Cyberchase (2002–present)
- Barney & Friends (1992–2010)
- Clifford the Big Red Dog (2000–2003)
- Liberty's Kids (2002–2003)
- Zoom (1972–1978; 1997–2005)



**NERD IS THE WORD**

This article was brought to you by **WNIT Nerd**. You don't have to be a nerd to love **PBS Michiana - WNIT**, but there are a lot of us out there. This page is the place to learn nerd, speak nerd, and nerd out on any given topic within the PBS Michiana - WNIT ecosphere.

If you have any interesting WNIT archive-worthy stories, facts or photos from our 50+ year history, [contact us!](#)

# Worth Watching May

(Programs subject to change. For the most up to date schedule, visit [wnit.org](http://wnit.org).)



## GREAT PERFORMANCES: SUFFS

**Friday, May 8 at 9pm**

Created by Tony Award winner Shaina Taub, this musical recorded from Broadway tells the story of the American suffragist movement and the remarkable friendships, heartbreak, and action that brought women together—or, in some cases, tore them apart.

## INDIAN AS APPLE PIE

**Saturdays starting May 9 at 11am**

Cookbook author Anupy Singla takes you on a journey of Indian ingredients and cooking by visiting fresh markets across the United States and cooking popular recipes in her Chicago-based kitchen. Each episode highlights how to best integrate unfamiliar ingredients and techniques into weekly cooking. You'll watch as Anupy shops for the perfect chapati flour, basmati rice and legumes and lentils.

## CALL THE MIDWIFE: SERIES FINALE

**Sunday, May 10 at 8pm**

Have your tissues at the ready as this beloved series comes to a close that's both bittersweet and hopeful. As Sister Veronica weighs her future with the Order, Dr. Turner makes a final stand against the council's news before the maternity home closes.

## FRONTLINE: THE PRESIDENT VS. THE FED

**Tuesday, May 12 at 10pm**

President Trump's unprecedented challenges to the Federal Reserve - and what it means for the economy. Tracing the battle between Trump and the Fed as the central bank steers the economy through an increasingly precarious moment

## GREAT PERFORMANCES: IRVING BERLIN'S TOP HAT

**Friday, May 15 at 9pm**

Inspired by the iconic 1935 movie musical starring Fred Astaire and Ginger Rogers, this acclaimed Chichester Festival Theatre revival recorded from the West End in January 2026 is directed and choreographed by three-time Tony winner Kathleen Marshall.

## CROSSROADS

**Monday, May 18 at 7:30pm**

*Crossroads* highlights inspiring stories from across the Michiana region. It showcases unique individuals, organizations, nonprofits, and businesses that are making a meaningful, positive impact in their communities. Through these stories, *Crossroads* aims to inform, empower, and celebrate the people who are working to make a difference.

## INDEPENDENT LENS: LIGHT OF THE SETTING SUN

**Monday, May 18 at 10pm**

A Chinese family's multigenerational trauma unfolds across time, place, and identity. Turning the camera inward, filmmaker Vicky Du traces her family's mental illness back to the Chinese Communist Revolution of 1949. Spanning Taipei, Taiwan, and New Jersey, *Light of the Setting Sun* explores identity, gender roles, and whether or not healing can break the cycle for future generations.

## AMERICAN MASTERS: W.E.B. DU BOIS - REBEL WITH A CAUSE

**Tuesday, May 19 at 9pm**

Explore the life and legacy of notable Black scholar and civil rights pioneer W.E.B. Du Bois. From his birth, just five years after the Emancipation Proclamation; to his death, on the eve of the March on Washington in 1963, his legacy as an activist continues to resonate today.

# Worth Watching May

(Programs subject to change. For the most up to date schedule, visit wnit.org.)



## NATIONAL MEMORIAL DAY CONCERT

**Sunday, May 24 at 8pm and 9:30pm**

America's national night of remembrance live from the West Lawn of the U.S. Capitol brings us together as one family of Americans to honor the service of generations of our men and women in uniform, our military families, with a special Semiquincentennial segment honoring all those who have given their lives in service to our nation since its founding 250 years ago. Hosted by Tony Award-winner Joe Mantegna and Emmy Award-winner Gary Sinise, the 2026 concert features personal stories and tributes interwoven with musical performances by world-renowned artists and the National Symphony Orchestra to commemorate the real meaning of the holiday.

## WILD ROSE MOON RADIO HOUR SHOW SPECIAL

**Monday, May 25 at 10pm**

*The Wild Rose Moon Radio Hour Show* is recorded live before a studio audience in historic downtown Plymouth, Indiana. The show is hosted by George Schricker and features musical performances, interviews, a game show and more. Read more about this two-hour special [here](#).

## A LIFE REIMAGINED: THE GEORGE MASA STORY

**Thursday, May 28 at 9pm**

Working backward through filmmaker Paul Bonesteel's decades-long fascination, this documentary unravels the mysterious life of George Masa — a Japanese immigrant whose extraordinary photographs helped define the identity of the Great Smoky Mountains. Filmed across Japan, the Pacific Northwest, and the Blue Ridge, this is a story of passion, loss, and the redemptive power of art and place.

## WOODY GUTHRIE AT 100! LIVE AT THE KENNEDY CENTER

**Saturday, May 30 at 9pm**

Join John Mellencamp, Jackson Browne, Tom Morello, Donovan, Ani DiFranco, Rosanne Cash, Old Crow Medicine Show and more for a special centennial celebration of the birth of the great American folk singer/songwriter, Woody Guthrie. Recorded live at the John F. Kennedy Center for the Performing Arts in Washington, D.C., this concert honors the music and the man, with performances of "This Land Is Your Land," "This Train Is Bound for Glory" and many other Guthrie greats.

## SOLVING THE PUZZLES OF THE MARLOW MURDER CLUB

**Sunday, May 31 at 9pm**

An amateur trio of female sleuths and a determined policewoman are at the heart of this brand-new British TV crime show, and the cast is led by a familiar face from MASTERPIECE's *Downton Abbey* and *Home Fires*.

**CIVIC THEATRE**  
SOUTH BEND

2026 SEASON

- The Imaginary Invalid*  
Warner Studio  
February 13-22
- Diary of a Wimpy Kid: The Musical*  
Battell Center  
March 13-21
- It Should Be You*  
Wilson Auditorium  
April 24-May 10
- Our Lady of the Tortilla*  
Warner Studio  
May 29-June 7
- The Drowsy Chaperone*  
Wilson Auditorium  
July 10-26
- Blithe Spirit*  
Warner Studio  
August 14-23
- Between the Lines, Jr.*  
Bendix Arena, Century Center  
September 17-20
- August Wilson's Fences*  
Wilson Auditorium  
October 2-18
- Ride the Cyclone*  
Warner Studio  
October 30-November 13
- Miracle on 34th Street*  
Wilson Auditorium  
December 4-20

Tickets and FLEXPASSES  
sbct.org

[Click to go to website](#)

# 34.1 & 34.2 Primetime May

34.1

34.2

(Programs subject to change. For the most up to date schedule, visit [wnit.org](http://wnit.org).)

	7:00 PM	7:30 PM	8:00 PM	8:30 PM	9:00 PM	9:30 PM	10:00 PM	10:30 PM	11:00 PM	11:30 PM
1 FRI	Indiana Week in Review	American Black Journal	Washington Week with the Atlantic	Firing Line with Margaret Hoover	Great Performances: Now Hear This The Iceland Sound, Part 4		Great Performances: Now Hear This The Composer is Yoo		Photographic Justice The Corky Lee Story	
	Milk Street's My Family Reunion	Cook's Country Motor City Favorites	America's Test Kitchen from Cook's Illustrated	Kitchen Queens New Orleans: Off the Hook	La Frontera with Pati Jinich Fronterizos of the Golden Coast		La Frontera with Pati Jinich Ancient Seeds & Desert Ghosts		La Frontera with Pati Jinich Back to the Middle	
2 SAT	Lawrence Welk America at Play		Marlow Murder Club, Part 3		Grantchester, Sea. 7 Finale		The Wild Rose Moon Hour Show		Austin City Limits Pat Benatar & Neil Giraldo	
	Milk Street's My Family Reunion	Pati's Mexican Table Recados	Great American Recipe The Bakes are High		Best of the Joy of Painting	Best of the Joy of Painting	Rick Steves' Art of Europe The Renaissance		French Chef Classics French Onion Soup	Pati's Mexican Table Getting to the Roots
3 SUN	Grantchester Season 7 Finale		Call the Midwife Sea. 15, Ep. 7		Margaret: The Rebel Princess Part 1		The Count of Monte Cristo The Duel, Ep. 7		Astrid The Flowers of Evil, Ep. 7	
	To Dine For w/ Kate Sullivan Sean Sherman	Cook's Country Never Enough Chocolate	Great American Recipe A Test of the Best		La Frontera with Pati Jinich Fronterizos of the Golden Coast		Confucius Was a Foodie		People of the North Treasures	Joanne Weir's Plates and Places
4 MON	Samantha Brown's Places to Love	Rick Steves' Europe	Antiques Roadshow Grant's Farm Hr. 2		The American Revolution The Soul of All America, Ep. 5					Roadtrip Nation
	My Greek Table w/ Diane Kochilas: Dodecanese	Cook's Country Spring Feast	America's Test Kitchen	Kitchen Queens New Orleans: Classic Crab	La Frontera with Pati Jinich Ancient Seeds & Desert Ghosts		Rick Steves' Europe	Ireland with Michael In the Loop	Seeing Canada Stanley Park	Best of the Joy of Painting
5 TUE	Legends of Michiana Kurt Simon	Women in Leadership Art	Finding Your Roots In the Blood		The American Revolution The Most Sacred Thing, Ep. 6					
	Kitchen Curious with Vivian Howard: Pasta	Les Stroud's Wild Harvest Blackberry	Christopher Kimball's Milk Street: New Salads	Kitchen Queens: New Orleans - World Cuisine	La Frontera with Pati Jinich Back to the Middle		Rick Steves' Europe Burgundy	Travelscope New Brunswick	Travels with Darley North Dakota	Best of the Joy of Painting
6 WED	Education Counts Michiana	Outdoor Elements	Life on Earth Attenborough's Greatest Adventure		NOVA Decoding the Universe - Cosmos		Shared Planet Open Spaces, Ep. 2		Macgillivray Freeman's Everest	
	Lidia's Kitchen Meal to Make You Smile	Cook's Country Pork and Pierogi	Life of Loi: Mediterranean Coffee Culture	Kitchen Queens: New Orleans - South of Border	Pati's Mexican Table Swinging Spirits	Pati's Mexican Table Revolutionary Bites	Rick Steves' Europe France's Dordogne	Samantha Brown's Place to Love: Oregon RV Trip	Passion Italy Basilicata	Best of the Joy of Painting
7 THU	Experience Michiana	Dinner & a Book	The Story of China with Michael Wood Ancestors/Silk Roads and China Ships				The Story of China with Michael Wood Golden Age/The Ming			
	Steve Raichlen's Planet BBQ East Meets West	Pati's Mexican Table Maya Today	Christopher Kimball's Milk Street: Romanian	Kitchen Queens: New Orleans - Down Home	Pati's Mexican Table Herosillo Food Crawl	Pati's Mexican Table Cooking for My Crew	Rick Steves' Europe Barcelona	Travelscope Germany's Winter Carnival	Wild Rivers with Tillie Yampa River	Best of the Joy of Painting

STREAM ALL EPISODES  
PBS Passport

THE MOUNTAIN DETECTIVE  
NEW SEASON



WATCH NOW



# 34.1 & 34.2 Primetime May

34.1

34.2

(Programs subject to change. For the most up to date schedule, visit wnit.org.)

	7:00 PM	7:30 PM	8:00 PM	8:30 PM	9:00 PM	9:30 PM	10:00 PM	10:30 PM	11:00 PM	11:30 PM
8 FRI	Indiana Week in Review	American Black Journal	Washington Week with the Atlantic	Firing Line with Margaret Hoover	Great Performances Suff's					Perfect 36: When Women Won the Vote
	Milk Street's My Family Reunion	Cook's Country Spicy and Sour for Supper	America's Test Kitchen from Cook's Illustrated	Kitchen Queens: New Orleans - Seafood Medley	Rick Steves' Europe Austrian and Italian Alps	Rick Steves' Europe French Alps and Lyon	Rick Steves' Europe Lisbon	Rick Steves' Europe Romania	Rick Steves' Europe Amsterdam	Rick Steves' Europe Art of Europe
9 SAT	Lawrence Welk Caribbean Cruise		Marlow Murder Club Part 4 Finale		Grantchester Sea. 8, Ep. 1		County Road 689		Austin City Limits Gary Clark, Jr. / Black Pumas	
	Christopher Kimball's Milk Street: Italian	Pati's Mexican Table Pink	Great American Recipe A Taste Down Memory Lane		Best of the Joy of Painting	Best of the Joy of Painting	Rick Steves' Art of Europe Baroque		French Chef Classics Quiche Lorraine	Pati's Mexican Table The Heart of Tequila
10 SUN	Grantchester Sea. 8, Ep. 1		Call the Midwife Sea. 15 Series Finale		Margaret The Rebel Princess, Part 2		The Count of Monte Cristo The Last Two, Ep. 8, Finale		Astrid Eye of the Dragon, Sea. 4, Ep. 1	
	To Dine For with Kate Sullivan: Miguel Garza	Cook's Country Smoky BBQ Favorites	Great American Recipe The Grand Finale		Rick Steves' Europe Austrian and Italian Alps	Rick Steves' Europe French Alps and Lyon	Confucius Was a Foodie		People of the North Faeroerne Islands	Joanne Weir's Plates and Places
11 MON	Samantha Brown's Places to Love	Rick Steves' Europe	Antiques Roadshow Grant's Farm Hr. 3		Antiques Roadshow Santa Fe's Museum Hill, Hour 3		Independent Lens Natchez			This Moment in America Artists in Heartland
	My Greek Table with Diane Kochilas	Cook's Country Smothered and Dowdied	America's Test Kitchen	Kitchen Queens: New Orleans - Meaty Mains	Rick Steves' Europe Lisbon	Rick Steves' Europe Romania	Rick Steves' Europe Vienna and the Danube	Ireland with Michael Dublin, by the Sea	Seeing Canada Banff Nat'l Park	Best of the Joy of Painting
12 TUE	Black Lives Matter: Mental Health		Finding Your Roots: Far from Home		Finding Your Roots: Larger Than Life		Frontline: The President vs. The Fed		Power Trip	
	Kitchen Curious with Vivian Howard: Fat	Les Stroud's Wild Harvest Deer Heart Lily	Christopher Kimball's Milk Street: Tomato	Kitchen Queens: New Orleans - Imperial	Rick Steves' Europe Amsterdam	Rick Steves' Europe Art of Europe	Rick Steves' Europe Czech Republic	Travelscope Thailand	Travels with Darley Route 66 Illinois	Best of the Joy of Painting
13 WED	Education Counts Michiana	Outdoor Elements	Nature: Attenborough and The Sea Dragon		NOVA: Decoding the Universe - Quantum		Shared Planet: Forest, Ep. 3		Dogs in the Wild: Meet the Family, Ep. 1	
	Lidia's Kitchen Something for Everyone	Cook's Country BBQ Thighs	Life of Loi: Mediterranean Arabian Nights	Table for All with Buki Elegbede	Rick Steves' Europe Art of Europe	Rick Steves' Europe Prague	Rick Steves' Europe Athens and Side Trips	Samantha Brown's Places to Love: Palm Springs	Passion Italy Sardinia	Best of the Joy of Painting
14 THU	Experience Michiana	Dinner & a Book	The Story of China with Michael Wood: The Last Empire / The Age of Revolution				Asian Americans: Breaking Ground, Ep. 1		Asian Americans: A Question of Loyalty, Ep. 2	
	Steve Raichlen's Planet BBQ Grilling Across the Pond	Pati's Mexican Table Mayan League of Own	Christopher Kimball's Milk Street: Hong Kong	Table for All with Buki Elegbede	Rick Steves' Europe Greek Islands	Rick Steves' Europe Sicilian Delights	Rick Steves' Europe Greece's Peloponnese	Travelscope Thailand	Wild Rivers with Tillie Grand Canyon	Best of the Joy of Painting

**STREAM ALL EPISODES**

**PBS Passport**

**THE NORDIC MURDERS**

NEW SEASON

**WATCH NOW**

**PBS**



# 34.1 & 34.2 Primetime May

34.1

34.2

(Programs subject to change. For the most up to date schedule, visit [wnit.org](http://wnit.org).)

	7:00 PM	7:30 PM	8:00 PM	8:30 PM	9:00 PM	9:30 PM	10:00 PM	10:30 PM	11:00 PM	11:30 PM
15 FRI	Indiana Week in Review	American Black Journal	Washington Week with the Atlantic	Firing Line with Margaret Hoover	Great Performances: Irving Berlin's Top Hat					PBS Arts Talk
	Milk Street's My Family Reunion	Cook's Country Ribs & Mashed Potatoes	America's Test Kitchen from Cook's Illustrated	Table for All with Buki Elegbede	Relish	Field Trip with Curtis Stone		Confucius was a Foodie		Lucky Chow Feeding Family Tree
16 SAT	Lawrence Welk: Tribute to Irving Berlin		Marlow Murder Club, Sea. 2, Ep. 1		Grantchester: Sea. 8, Ep. 2		Woodsongs: Tim O'Brien and Wood Box Heroes		Austin City Limits: Jelly Roll / The War and Treaty	
	Christopher Kimball's Milk Street: Mexican Favorites	Pati's Mexican Table Swinging Spirits	Antiques Roadshow Grants Farm, Hour 3		Best of the Joy of Painting	Best of the Joy of Painting	Rick Steves' Art of Europe The Modern Age		French Chef Classics French Tarts, Apple	Pati's Mexican Table Double Vallarta
17 SUN	Grantchester: Sea. 8, Ep. 2		The Great Escaper on Masterpiece			Downton Abbey, Sea. 1, Ep. 1			Astrid: The Arabian Nights, Ep. 2	
	To Dine For with Kate Sullivan: Alice Walton	Cook's Country Bourbon and Broccoli	Antiques Roadshow Santa Fe's Museum Hill		Relish	Lucky Chow Feeding Family Tree	Confucius Was a Foodie		People of the North Cod from Lofoten	Joanne Weir's Plates and Places
18 MON	Samantha Brown's Places to Love	Crossroads	Antiques Roadshow: Junk in the Trunk 15		Antiques Roadshow: Cheekwood Estates & Gardens, Hr. 1		Independent Lens: Light of the Setting Sun		Trolley Park: Great Lakes	
	My Greek Table with Diane Kochilas	Cook's Country Straight from So-Cal	America's Test Kitchen	Table for All with Buki Elegbede	Field Trip with Curtis Stone		Rick Steves' Europe Iran: Tehran	Ireland with Michael Just One More Mad Dash	Seeing Canada Indigenous Tourism	Best of the Joy of Painting
19 TUE	Then, Now and Always: The St. Joseph River Story		Finding Your Roots: Stranger Than Fiction		American Masters: W.E.B. Du Bois: Rebel With a Cause			Ida B. Wells: American Stories		
	Kitchen Curious with Vivian Howard: Root Vegetables	Les Stroud's Wild Harvest Milk Cap Mushrooms	Christopher Kimball's Milk Street: Pizza Party	Table for All with Buki Elegbede	Confucius was a Foodie		Rick Steves' Europe Iran's Historic Capitals	Travelscope Fredericksburg, Texas	Travels with Darley Northern Virginia	Best of the Joy of Painting
20 WED	Education Counts Michiana	Outdoor Elements	Nature: Attenborough's Wonder of Song		NOVA: When Whales Could Walk		Shared Planet: Waters, Pt. 4		Dogs in the Wild: Secrets of Success	
	Lidia's Kitchen Embrace the New	Cook's Country Southern Discoveries	Life of Loi: Mediterranean Culinary Cornerstones	Table for All with Buki Elegbede	Food Roots		Rick Steves' Europe Croatia	Samantha Brown's Places to Love: Santa Fe, NM	Islands Without Cars Netherlands	Best of the Joy of Painting
21 THU	Experience Michiana	Dinner & a Book	Asian Americans: Good Americans, Ep. 3		Asian Americans: Generation Rising, Ep. 4		Asian Americans: Breaking Through, Ep. 5		Food Roots	
	Steven Raichlen's Planet BBQ San Antonio Grill	Pati's Mexican Table Canyon Cuisine	Christopher Kimball's Milk Street: Apple Strudel	Table for All with Buki Elegbede	Pacific Heartbeat Ola Hou - Journey to NY Fashion Week		Rick Steves' Europe Dubrovnik & Balkan	Travelscope Gathering in Scotland	Wild Rivers with Tillie	Best of the Joy of Painting
22 FRI	Indiana Week in Review	American Black Journal	Washington Week with the Atlantic	Firing Line with Margaret Hoover	Great Performances: An Evening with Nicole Scherzinger			Great Performances: Now Hear This - Rising Stars		PBS Arts Talk
	Milk Street's My Family Reunion	Cook's Country Cast Iron Comforts	America's Test Kitchen Hearty Mediterranean	Table for All with Buki Elegbede	America the Bountiful Beef in Texas	Ellie's Real Good Food Keeping it Real	Sara's Weeknight Meals When Pigs Fry	Lucky Chow Chasing the Dream	Jazzy Vegetarian Big BBQ Burger Night	Kevin Belton's New Orleans: BBQ Fest

STREAM ALL EPISODES  
 PBS Passport



WATCH NOW  
 PBS

# 34.1 & 34.2 Primetime May

34.1

34.2

(Programs subject to change. For the most up to date schedule, visit [wnit.org](http://wnit.org).)

	7:00 PM	7:30 PM	8:00 PM	8:30 PM	9:00 PM	9:30 PM	10:00 PM	10:30 PM	11:00 PM	11:30 PM	
23 SAT	Lawrence Welk: Grammy Award Songs		Marlow Murder Club, Sea. 2, Ep. 2		Grantchester: Sea. 8, Ep.3		Woodsongs: Rob Ickes & Trey Hensley and Jason Carter		Austin City Limits: Chris Stapleton		
	Christopher Kimball's Milk Street: From Spain	Pati's Mexican Table Symphony of Flavors	Antiques Roadshow Junk in the Trunk		Best of the Joy of Painting	Best of the Joy of Painting	Rick Steves' Art of Europe Stone Age to Ancient Greece		French Chef Classics French Onion Soup	Pati's Mexican Table Quiero Mas Tacos	
24 SUN	Grantchester: Sea. 8, Ep. 3		National Memorial Day Concert 2026			National Memorial Day Concert 2026			Downton Abbey, Sea. 1, Ep. 2		
	To Dine for with Kate Sullivan: Barbara Corcoran	Cook's Country Plenty of Garlic and Parm	Antiques Roadshow Cheekwood Estate & Gardens		America the Bountiful Beef in Texas	Ellie's Real Good Food Keeping it Real	Confucius Was a Foodie		People of the North The Beautiful West	Joanne Weir's Plates and Places	
25 MON	Samantha Brown's Places to Love	Rick Steves' Europe	Antiques Roadshow: Celebrating Asian-Pacific Heritage		Antiques Roadshow: Cheekwood Estates & Gardens, Hr. 2		The Wild Rose Moon Hour Show Special Kennedy's Kitchen				
	My Greek Table with Diane Kochilas: Street Food Athens	Cook's Country When Only Chocolate	America's Test Kitchen	Table for All with Buki Elegbede	Sara's Weeknight Meals When Pigs Fry	Lucky Chow Chasing the Dream	Rick Steves' Europe Andalusia, Gibraltar	Weekends with Yankee Outdoor Adventures	Seeing Canada New Brunswick	Best of the Joy of Painting	
26 TUE	Our Town: St. Joseph		Finding Your Roots: Dreamers One and All		American Experience: Seabiscuit		Frontline: The War Cabinet		Waal River Crossing: 1944		
	Kitchen Curious with Vivian Howard: Pickles	Les Stroud's Wild Harvest Wood Apple	Christopher Kimball's Milk Street: Coconut Curry	Table for All with Buki Elegbede	Jazzy Vegetarian Big BBQ Burger Night	Kevin Belton's New Orleans BBQ Fest	Rick Steves' Europe Oslo	Travelscope Cappadocia, Turkey	Travels with Darley South Carolina	Best of the Joy of Painting	
27 WED	Education Counts_Michiana	Outdoor Elements	Nature: Attenborough and the Jurassic Sea Monster		NOVA: Great Mammoth Mystery		Secrets of the Dead: China's Bronze Kingdom		Dogs in the Wild		
	Lidia's Kitchen Worth Celebrating	Cook's Country Italian-American Kitchen	Life of Loi: Mediterranean Date with a Date	Table for All with Buki Elegbede	Steven Raichlen's Project BBQ: Hog Wild	Cook's Country BBQ Thighs, Fried Peaches	Rick Steves' Europe Norway's West	Samantha Brown's Places to Love: Lafayette	Islands Without Cars Michigan's Mackinac	Best of the Joy of Painting	
28 THU	Experience Michiana	Dinner & a Book	Arts @ IU South Bend: Piano Studio - Ketevan Badridze		A Life Reimagined: The George Masa Story			Independent Lens: Third Act			
	Steven Raichlen's Planet BBQ Smoking 101	Pati's Mexican Table Revolutionary Bites	Christopher Kimball's Milk Street	Table for All with Buki Elegbede	My Greek Table w/Diane Kochilas: Oregano	Pati's Mexican Table Carne Asada	Rick Steves' Europe Stockholm	Travelscope South Africa on Safari	Crossing South Villa Del Valle	Best of the Joy of Painting	
29 FRI	Indiana Week in Review	American Black Journal	Washington Week with the Atlantic	Firing Line with Margaret Hoover	Great Performances: Broadway Musicals, A Jewish Legacy				Rick Steves' Experiencing Europe		
	Milk Street's My Family Reunion	Cook's Country Ultimate Comfort Foods	America's Test Kitchen	Table for All with Buki Elegbede	American Woodshop Finishing Like a Pro	American Woodshop Furniture Repair	Ask This Old House Lead Testing	Ask This Old House Nola Shutters	Volunteer Woodworker Designs from Garden	Volunteer Woodworker Art as Therapy	
30 SAT	Welk: Milestones & Memories				Woody Guthrie at 100! Live at the Kennedy Center			The Highwaymen: Live at Nassau Coliseum			
	Christopher Kimball's Milk Street	Pati's Mexican Table Cowboy Life	Antiques Roadshow Celebrating Asian-Pacific Heritage		Best of the Joy of Painting	Best of the Joy of Painting	Rick Steves' Art of Europe Ancient Rome		French Chef Classics Quiche Lorraine	Pati's Mexican Table The Fire Kings	
31 SUN	Barbra Streisand: Timeless, Live in Concert (cont.)			Solving the Puzzles of the Marlow Murder Club			Downton Abbey, Sea. 1, Ep. 3				
	To Dine For with Kate Sullivan: Eva Longoria	Cook's Country Ballpark Classics	Antiques Roadshow Cheekwood Estate & Gardens		American Woodshop Finishing Like a Pro	American Woodshop Furniture Repair	Confucius Was a Foodie		People of the North Fishing Community	Joanne Weir's Plates and Places	

The title "WEATHER HUNTERS" is rendered in a large, stylized font. "WEATHER" is in blue with a white outline, and "HUNTERS" is in yellow with a blue outline. The text is set against a white cloud graphic that has raindrops falling from its left side. Above the cloud is a bright yellow sun with rays. The background of the entire scene is a vibrant, cartoon-style landscape with green pine trees, a white fence, a rainbow arching across the sky, and a large, light-colored moon or planet in the distance.

**New Episodes!**

**Let's go weather hunting.**



**Watch now on  
PBS KIDS**



# SUMMER IN THE NEIGHBORHOOD



**Save the Dates:**

**Kids to Parks Day with SBVPA**  
May 16, 12-2pm

**Be My Neighbor Day**  
Tuesday, June 23 at Four Winds Field.

You can now review our [events calendar](#) for details on these and many more education events.





# WNIT CHILDREN'S PROGRAMMING

## WNIT Channel 34.3 - PBS KIDS MICHIANA 24/7

### WNIT Channel 34.1

Monday - Friday	
6:00 AM	Arthur
6:30 AM	Odd Squad
7:00 AM	Wild Kratts
7:30 AM	Weather Hunters
8:00 AM	Lyla in the Loop
8:30 AM	Carl the Collector
9:00 AM	Daniel Tiger
9:30 AM	Phoebe & Jay
10:00 AM	Sesame Street
10:30 AM	Work it Out Wombats
11:00 AM	Donkey Hodie
11:30 AM	Rosie's Rules
NOON	Elinor Wonders Why
12:30 PM	Alma's Way
1:00 PM	Molly of Denali
1:30 PM	Xavier Riddle
Sunday	
6:00 AM	Mister Rogers
6:30 AM	Arthur
7:00 AM	Wild Kratts
7:30 AM	Weather Hunters
8:00 AM	Cyberchase
8:30 AM	SciGirls

	Monday-Friday	Saturday-Sunday
6:00 AM	Clifford	The Cat in the Hat
6:30 AM	Sesame Street	Dinosaur Train
7:00 AM	Pinkalicious	Pinkalicious
7:30 AM	Curious George	Peg + Cat
8:00 AM	Sesame Street	Sesame Street
8:30 AM	Phoebe & Jay	Phoebe & Jay
9:00 AM	Work It Out Wombats!	Work It Out Wombats!
9:30 AM	Work It Out Wombats!	Work It Out Wombats!
10:00 AM	Daniel Tiger	Daniel Tiger
10:30 AM	Daniel Tiger	Daniel Tiger
11:00 AM	Carl the Collector	Carl the Collector
11:30 AM	Carl the Collector	Curious George
NOON	Donkey Hodie	Donkey Hodie
12:30 PM	Donkey Hodie	Milo
1:00 PM	Elinor Wonders Why	Elinor Wonders Why
1:30 PM	Rosie's Rules	Rosie's Rules
2:00 PM	Rosie's Rules	Rosie's Rules
2:30 PM	Xavier Riddle	Xavier Riddle
3:00 PM	Molly of Denali	Molly of Denali
3:30 PM	Alma's Way	Alma's Way
4:00 PM	Lyla in the Loop	Lyla in the Loop
4:30 PM	Weather Hunters	Arthur
5:00 PM	Odd Squad	Odd Squad
5:30 PM	Wild Kratts	Wild Kratts
6:00 PM	Wild Kratts	Wild Kratts
6:30 PM	Weather Hunters	Weather Hunters
7:00 PM	Lyla in the Loop	PBS Kids Family Night
7:30 PM	Arthur	
8:00 PM	Nature Cat	
8:30 PM	Hero Elementary	
9:00 PM	Cyberchase	Cyberchase
9:30 PM	Let's Go Luna!	Ready Jet Go!



PBS KIDS learning goals focus on a whole-child approach, developing key developmental areas like literacy, math, science (STEM), critical thinking, and social-emotional skills (empathy, resilience) through research-based, developmentally appropriate media, games,

and activities to help kids succeed in school and life. Specific goals vary by show, targeting skills like early literacy, scientific inquiry, engineering, math, or managing emotions, all designed to build confident, curious, and caring individuals.



## Learning Goals



Series	Grade	Learning Goals
Acoustic Rooster	PK-K	The Arts
Alma's Way	PK-1	Emotions, Self-Awareness, & Relationships
Arthur	K-2	Emotions, Self-Awareness & Relationships
Carl the Collector	K-2	Emotions, Self-Awareness & Relationships
City Island	K-2	Social Studies
Clifford the Big Red Dog	PK-K	Literacy & Language, Relationships
Count on June Bug	PK-K	Math
Curious George	PK-K	Math, Science & Engineering
Cyberchase	1-2	Math & Science
Daniel Tiger's Neighborhood	PK-K	Emotions, Self-Awareness & Relationships
Design Squad Global	1-2	Science & Engineering
Dinosaur Train	PK-K	Science
Donkey Hodie	PK	Emotions, Self-Awareness & Relationships
Elinor Wonders Why	PK-K	Science & Engineering
Hero Elementary	K-2	Science & Engineering
Jamming on the Job	K-2	Social Studies, Self-Awareness & Relationships
Jelly, Ben & Pogo	PK-K	Self-Awareness, Relationships & The Arts
Keyshawn Solves It	K-2	Emotions, Self-Awareness & Relationships
Let's Go Luna!	K-2	Social Studies
Lyla in the Loop	K-2	Science, Technology, Engineering & Math
Mega Wow	K-2	Science & Engineering
Mister Rogers' Neighborhood	PK-K	Emotions, Self-Awareness & Relationships
Molly of Denali	K-2	Literacy & Language
Nature Cat	K-2	Science
Milo	PK-K	Social Studies



Mystery League	K-2	Social Studies
Odd Squad	K-2	Math
Oh Noah!	K-2	Spanish & Social Studies
Phoebe & Jay	PK-K	Literacy & Language
Peg + Cat	PK-K	Math
Pinkalicious & Peterrific	PK-1	The Arts
Ready Jet Go!	K-2	Science & Engineering
Rosie's Rules	PK-K	Social Studies
SciGirls	1-2	Science & Engineering
Scribbles and Ink	K-2	The Arts
Sesame Street	PK-K	Emotions, Self-Awareness, Relationships, Math, Literacy & Language
Sid the Science	PK-K	Science
Super Why's Comic Book Adventures	PK-K	Literacy & Language
Team Hamster!	K-2	Science & Engineering
The Cat in the Hat Knows a Lot About	PK-K	Science & Engineering
The Ruff Ruffman Show	K-2	Science & Engineering
Through the Woods	PK-K	Science
Tiny Time Travel	K-2	Literacy & Language
Together We Can	K-2	Social Studies
Weather Hunters	K-2	Science, Technology & Engineering
What Can You Become?	PK-K	Social Studies, Self-Awareness & Relationships
Wild Kratts	K-2	Science
WordGirl	K-2	Literacy & Language
Word World	PK-K	Literacy & Language
Work It Out Wombats!	PK-K	Science, Technology, Engineering & Math
Xavier Riddle and the Secret Museum	K-2	Emotions, Self-Awareness & Relationships



Watch and play on PBS KIDS! [pbskids.org](https://pbskids.org)



# PBS Michiana - WNIT KIDS Education Local Impact & Local Engagement

## Good News: We're Growing!

Our PBS Michiana Education team has worked very hard to engage with the Michiana community, and we have grown!

There is so much to see and explore within our educational content that we have created website pages to contain it all.

Go to: [PBS Michiana Education](#)

to learn more!



Easy to read and view mobile-friendly design.



### Go to our new PBS Michiana Lifelong Learning web pages for the following:

A calendar and listings of educational engagement events for adults and children

New shows and educational content

Resources

Curated materials from PBS LearningMedia

WNIT communications

Links

Audio

Videos

and more!

### *For kids of all ages! Sections include:*

- Early Childhood
- Elementary
- Youth
- Young Adult
- Adult
- Parents
- Educators
- and more



PBS KIDS invites kids and families to come along on an unforgettable cross-country road trip with the **PBS KIDS Across America** initiative. From May through July 2026 and beyond, PBS KIDS will showcase amazing places and real kids throughout the 50 states and U.S. territories, as well as some of the American figures who have had an impact on the nation's history.



*Jim Henson*  
 THE JIM HENSON COMPANY

**See schedule for dates and showtimes**

The special, shot on location in breathtaking Sequoia National Park, aims to help children recognize and name the feeling of awe by experiencing moments of wonder alongside Roxy and Ronald. Through nature, music, storytelling, and friendship, children learn how awe sparks curiosity, creativity, kindness, and a desire to explore and care for the world around them.



**Premieres May 22 on 34.3**

*America's Awesome Kids* is a series of live-action shorts that showcases kids from coast-to-coast, revealing what is special about where they live, their hobbies and passions, and how they are making a positive impact in their communities. Each featured kid highlights a range of interests, activities, and experiences that celebrate what's awesome about America.



# PBS Michiana - WNIT Kids Club



## PBS MICHIANA KIDS CLUB MEMBERS GET COOL STUFF LIKE

- a PBS Michiana Kids Club backpack with PBS Kids swag
- a special treat from Chick-fil-A
- free or discounted ticket offers to area children's performances
- early registration for PBS Michiana Kids Club events
- an on-air birthday greeting during their birthday month
- a birthday listing in the Planner
- a PBS Kids birthday card and special birthday gift
- and more!

**ANYONE** who donates \$60 annually can enroll their kids or grandkids. Joining is easy! CALL 574-675-9648, EXT. 311



**Michiana**  
KIDS CLUB

JOIN  
TODAY

Sponsored by:

**TIRE RACK**  
.com

Proud supporter of PBS KIDS programming!

# HAPPY BIRTHDAY!

PBS Michiana - WNIT Kids Club Members!

## May Birthdays

### Kid's Name

### Kid's Age

Ava Banacki

7

Lucy Bawtinheimer

11

Lily Holmes

10

Josie Kelley

5

Roy Robinson

6

Allison Simoni

7

Molly Slabaugh

10



**Michiana**  
KIDS CLUB

**May is  
Mental Health  
Awareness  
Month**

A close-up photograph of several cosmos flowers in shades of white, pink, and yellow, set against a soft, out-of-focus background of a blue and green sky.

**National Memorial Day Concert**

A wide-angle photograph of the National Memorial Day Concert. In the foreground, a large orchestra is performing on a stage. A conductor stands at the center of the stage with arms raised. Behind the orchestra, a massive crowd of people fills the area. In the background, the United States Capitol building is illuminated against a twilight sky. Large American flags are visible on the sides of the stage.

**Sunday, May 24 at 8pm & 9:30pm**



MASTERPIECE  
THE  
FORSYTES



MASTERPIECE  
THE COUNT OF  
MONTE CRISTO



MASTERPIECE  
DOWNTON  
ABBEY

PBS Michiana  Passport

SHEIN TRUST COMMUNITY SERIES &

# SOUTH BEND SYMPHONY

PRESENTS

## Salute to Freedom



**SOUTH  
BEND  
SYMPHONY**   
Alastair Willis, Music Director

  
proudly supports the Shein  
Trust Community Series.

July 3 / 7:30 p.m.  
Morris Performing Arts Center  
Admission Free  
[www.southbendsymphony.org](http://www.southbendsymphony.org)

# Directors' Circle



The WNIT Directors' Circle represents a very dedicated and select group of individuals who, by their commitment, contribute to the total annual support which is the foundation of WNIT's operating budget. These essential annual contributions make possible the great programs that everyone in Michiana enjoys.

## May-June Thank you!

### Diamond Level (\$10,000 +)

Anonymous Foundation (2)  
Hari and Seema Agarwal  
Estate of Jack and Shirley Appleton  
Billie and David Bankoff  
Marijke M Brown  
Arthur J. Decio\*  
Roger and Joyce Foley  
Steven and Ann Herendeen  
Mrs. Sue Hiler  
Joan Hofman  
Michael and Janice Imgrund  
Brian and Melinda Inniger  
James and Christine Kelly  
Bob and Pat Kill  
Ralph Komasinski and Katherine Humphreys  
Michael Leep  
Don and Joan Lyons  
Ursula and Daniel Madejczyk  
William and Linda Meyer  
Barb and John Phair  
Carol Purdy  
Ernestine M. Raclin\*  
Robby and Pamela Rask  
Donna and Mark Richter  
June Rollinger  
Pat and Sue Ruskowski  
Lorrie and Bill Schmuhl  
Maria Slager  
Craig D. Sullivan and Cynthia L. Harris  
Sonny\* and Dee\* Tepe  
Janet and Larry Thompson  
Thomas F. and Anita J. Veldman  
Scott and Kimberlee Welch  
Barbara Wind  
Wen and Susan Wu

### Platinum Level (\$5,000 +)

Anonymous Foundation  
Louise and Stephan Anella  
Dr. James Barnes  
Marianne Corr  
David Crothers and Richard Threet  
Katy and Tim Demarais  
Richard and Jean Dennen  
Bipin and Linda Doshi  
Margaret Drevs  
Paul Levett and Judith Eck  
Martha Foreman  
Van Gates  
Gates Fund of the Community Foundation of St. Joseph County  
Dave and Ginny Gibson  
William and Leslie Gittin  
Hillman Family Fund of the

Community Foundation of St. Joseph County  
Howard and Marie Goodhew Fund of the Community Foundation of St. Joseph County  
Janice and Larry\*\* Harding  
Mike and Dianne Kelbel  
Michael and Rebecca Kubacki  
Lake City Bank Foundation  
Drs. Gail English and Nels Leininger  
Jill Long Thompson  
Ashley Martin  
Wade H. Mayberry  
Chris Maziar  
Max and Lydia Mertz  
Chris and Carmi Murphy  
Michael and Amy Phend  
The Honorable James W. Rieckhoff  
Rob and Lee Riley  
Gerald H. Shaffer  
Robert and Christine Smith  
Michael and Colleen Thomas  
Barbara Williams

### Gold Level (\$2,500 +)

Anonymous (2)  
Julie and Thomas Brenner  
Donna Brown  
Discavage Charitable Fund  
Neil and Lori Donahoe  
Jan Farron  
Robert and Sharon Froschauer  
Mary Beth and Greg Giczi  
Hand Family Foundation, Inc.  
Janet Holderbaum  
Thomas Hudak  
Carol and Craig Kapson  
Timothy and Sue Liddell  
Sara Marcus  
Wade Mayberry  
Dr. Debra and Rodney McClain  
Judith McDowell  
Robert and Jane Miller  
Susan Ohmer and Donald Crafton  
Jeff and RaeLee Rea  
Thomas Richardson  
Douglas and Nancy Sakaguchi  
Nicholas Timm and Deborah Longworth  
Rich and Donna Vavra-Musser  
Tom and Margie Yarger

### Silver Level (\$1,000 +)

Audrey Alderfer  
Joan E Aldrich  
David and Toni Annis  
Anonymous (3)  
Susan and David Bailey  
Dean and Suzanne Baker

Stephen and Nancy Ball  
Linda Bancroft  
Metta & Roger Barbour Charitable Gift Fund  
Joseph and Marzy Bauer  
Kathy Malone Beeler  
Donald and Susan Bell  
Janice Beutter  
Jo Ann and Joe Blazek  
Glen Blinn  
Kathleen Bondi  
Kimberley D. Bow Sundy  
Charles Bower  
Gina and Jim Bremner  
George and Patricia Burgoyne  
Janette Burkhardt-Miller  
Mrs. James Butler  
Terri Calkins  
Dirkus Callahan  
David and Kirsten Campbell  
Edward L. Carrico  
Dominic Chaloner  
Theodore and Faye Chamberlain  
Geoff and Kathie Church  
Jack and Karen Cittadine  
Peg Claeys  
Barbara Clausen  
Ken Clayborn  
Dr. Robert E Clemency  
Julie Coyle  
Robert and Ruth Craft  
Dale and Mary Lou Dearthoff  
Janet Deaton  
Drs. A Philip and Mary Depauw  
Jim and Helen Desenberg  
Barbara Dillon  
Nancy Dunbar  
Brian Esch  
Diane Eskridge  
Nancy and Bill Everett  
Dorothy Feigl  
Faith Fleming and Dan Stowe  
Frank and Wendy Folk  
Chris and Patty Fowler  
Dianne and Don Frandsen  
Stephen and Barbara Fredman  
Jody and Mike Freid  
Mrs. L. Craig Fulmer  
Timothy and Katherine Fulnecky  
Richard and Kathy Gadson  
Victor Gamble  
Rodney and Carol Ganey  
Michael and Helen Gaglio  
Maggie and Steve Goldberg  
Margaret Goldsmith  
Frank Greene  
Trent Grocock  
Dr. and Mrs. Paul Guentert  
Charles Hackensmith  
Lynn Haller  
Loren and Ann Hamel

Mary Hamm  
Joan Hardesty  
Edward and Joan Hardig  
Joseph and Julie Harmon  
Drs. James and Holly Harris  
Sharee and Frank Hartman  
Dan Hektor and Tela Schulman-Hektor  
Jennifer and Frederick Helmen  
Donna Hill  
Dennis G. Hoffer  
Philip and Adelle Holdread  
Keim and Sylvia Houser  
Ilene Howard  
James W. and Sally F. Hubbard  
Duane and Beth Huffer  
Hollis E. Hughes  
Dr. and Mrs. Tom Hughes  
Jane Hunter  
Nelson Hurt  
Interstate Asphalt  
Nancy Johnson  
Sharon L Jones  
Deborah and Allan Kayler  
Marijo and Kevin Kelly  
Linda and Karl Kincade  
Janet King  
Peggy King and Richard Mock  
Sandra and Rod King  
Donna Kirby  
Susan K. Kratz  
James and Nancy Krzyzewski  
Richard Lamanna  
Philip and Becky Laney  
Joel and Christine Lehmann  
Michael and Karen Lemmon  
Charles Leone  
Dr. Robert D Lerch  
Richard and Linda Letherman  
Rebecca and Timothy Link  
Norma Lou  
Steve and Peg Luecke  
Robert and Nancy Lute  
Paul and Jessica Maich  
Helen and Richard Mao  
Jason and Kirsten Marker  
Thomas and Laura Marnocha  
Sharon Mast  
John Mastrojohn and Mike Davids  
Debra and Thomas McArthur  
Scott McCann  
Kara McClure  
Carolyn McDonald and Michael Coppedge  
Stephen and Connie McTigue  
David and Renee Millar  
Jane K. Miller  
Marilyn Miller-Ortiz  
Robert Mitsch  
Dr. and Mrs. Brian Moloney  
Anila and James Mondabaugh  
Pat and Carol Moody

Carol A. Moore  
Jay and Marilyn Morris  
Leigh and Marcia Morris  
Vicki and Bill Morton  
Edward and Ruth Ann Mosher  
Tony and Jill Mroczkiewicz  
Sue Neeb  
Ilene Nemitz  
Richard Niemi  
Thomas and Marlene Nowak  
Paul and Carol Nye  
Ed and Mary Evelyn O'Dell  
Neil and Diane Orians  
Kathy and Thomas Platt  
William Ponko  
Howard and Charlotte Poole  
Dr. Yupadi Prasertwanitch  
Richard Rabbers  
Anne Reel  
Mary Renshaw  
Karin and Hugh Rettinger  
Ruth J Retzke  
Charles Rizzo  
Gabrielle Robinson  
David and Susan Rowley  
The Paul Saltzgeber Memorial Fund for Reading, Writing and the Arts  
Dr. William and Diane Sarnat  
Richard and Nancy Saunders  
Joyce Schalliol  
Rhoda Schrag  
Kenton and Sally Schreck  
Martha Selle  
Marilyn Shaul  
James and Patricia Short  
Mary T. Short  
Ben and Judith Smith  
Byron and Eloise Smith  
Jennifer and Mark Smith  
Ellyn Stecker and Peter Smith  
Rosemary Spalding  
William and Jennifer Squiers  
Thomas H Story  
Perry Stow and Andrea Mather-Stow  
Beth and Greg Suderman  
Andika Suhardjo  
Donald and Mary Swift  
Patricia Taplick  
Linda Toth  
Richard Treckelo  
Susan Vanek  
Richard and Jane Wallace  
Fred and Mary Wassilak  
Timothy and Beth Weber  
Cynthia Wendzonka  
Robert F. Werner Jr. and Kathleen A. Werner  
John and Mary Wiley  
Martyn and Kathleen Wills  
Sarah Wisthuff  
Pam and Don Wycliff

# Directors' Circle



The WNIT Directors' Circle represents a very dedicated and select group of individuals who, by their commitment, contribute to the total annual support which is the foundation of WNIT's operating budget. These essential annual contributions make possible the great programs that everyone in Michiana enjoys.

## May-June Thank you!

Sharon Yeager and Henry Veldman  
Mary Lehman Yoder  
Richard and Joy Yoder  
John D. and Carol Zeglis  
Kathryn and Lorenzo Zeugner  
Robert and Frances Zielsdorf  
Jerome and Barb Ziliak

### Bronze Level (\$500 +)

Anonymous (8)  
Mary Liechty Adams  
Hary and Roberta Alfrey  
Rex and Nancy Allman  
Eric and Sandy Amt  
Keri and Donald Anderson  
Mr. and Mrs. Frank Antonovitz  
Curtis Badger  
Orrin and Gwen Bailey  
Reginald F. Bain  
Tim and Mary Baker  
Stuart and Paula Barb  
David Bartkus and Carolyn Woo  
James Beatty  
Cynthia and Matt Benedict  
Alice and John Bentley  
David and Teresa Betz  
Anne Birky  
Jeffery Boes  
Hayley Boling  
Kenneth Boyd  
Elizabeth Naquin Borger  
James Bowman  
Brian and Jeannelle Brady  
William and Shannon Brewster  
George and Martha Buckingham  
Heidi Beidinger-Burnett and Bruce Burnett  
Emily Neufeld and Drew Buscareno  
Chasten and Pete Buttigieg  
Family Fund (PT) of the Community Foundation of St. Joseph County  
Jeffrey and Angela Buysse  
Deborah Cafiero  
Lynn Carbone  
Ian and Barbara Carmichael  
James and Patty Carr  
Cristeen and James Causey  
Edward and Carla Chester  
Leslie Choitz  
Donald and Marianne Christenson  
Kyra Clark  
Mary Lou Cotton  
Teri S. Crabill  
Douglas D. Cripe  
Frank and Patricia Criniti  
Culver Family Foundation  
Debra Dailey

E. Marlene Davidson  
Douglas and Patricia Davis  
Tom and Debbie Davison  
Laura Dawald  
Marianne Day  
Rhonda De Vreese  
Robert Deputy  
Jeff and Jamie Diller  
Louella Dilts  
Ann and Paul Divine  
Stephen Donndelinger  
Susan and John Doster  
Robin and Lisa Douglass  
Elizabeth Dowd  
Greg and Mary Downes  
John and Priscilla Duman  
Joel and Amy Duthie  
Fernand and Brigid Dutille  
Elaine Egging  
Bruno and Rosary Eidietis  
Cathy Emmel  
Georges Enderle  
Jill and Chris Erb  
Joyce Erickson  
Jane Eslick  
Anne Feferman  
Thomas Felger  
Sallee and James Field  
Nancy Filley  
Larry and Jan Fisher  
James A. Freeland  
Kathryn Waltz-Freel  
Dianna Fox  
George and Kathy Freese  
Michael Friedland and Elisabeth Fagen  
Thomas and Cinthia Fuja  
Betsy Fulnecky  
Susan L Ganser  
Steven and Susan Garboden  
Beverly Gillespie  
Nancy and Jim Goodhew  
Jonathan and Joelyn Gosse  
Richard Gottwald  
Marilyn Graber and Peter Miller  
Christine and Robert Guth  
Lowell and Judy Hamel  
Christopher and Fern Hamlin  
Earl and Barbara Hansen  
Lyle and Carolyn Hardman  
Robert and Elizabeth Harkness  
Lee Harman  
William Harman and Vicki Sue Burley  
Deborah Harris  
Robert and Cheryl Hastings  
Charles S. Hayes  
Mary Hesser  
Timothy Hippensteel  
Jane Hoffman  
Martha and Scott Hollett  
Edna and Robert Homan  
Elaine Hooley

Charles Horswell and Judy Wenig-Horswell  
Laddie and Charron Hudson  
James D. Hudson  
Huizenga Family Foundation  
Davis and Cynthia Illingworth  
Doug and Janice Irvine  
Jane and Calvin Jackson  
Mr. and Mrs. Melvin Jacobson  
John and Jan Jenkins  
Rowan Kelley and Amanda Miller Kelley  
Dale and Judith Keltner  
Charles and Debra Kent  
Maggie Kernan  
Vernon King  
Marjorie Kinsey  
Jonathan and Edwina Kintner  
Charles and Celia Kirk  
Scott Kirner and Karen Schneider Kirner  
Richard and Susan Klepinger  
Gretchen and Richard Koerting  
Kathy Koleszar  
Sandra and Bruce Korenstra  
Thomas E Kowieski  
Mollie Krider  
Lavonne Kroncke  
Stephen and Hillary Lagattuta  
Karen Lant  
Alexander and Nancy Lappin  
Robert and Margaret Laven  
Linda and Robert Leliaert  
Ann and Gary Linley  
John Lloyd  
Nancy Loewen  
Barb and Greg Lorch  
Merlyn and Susan Lucas  
Denise and George Lynch  
Adah M. Lynn  
Kent Maden  
Dave and Beth Mahar  
Jonathan and Deirdre Makielski  
Sara Marbach  
William A. and Luann Mashke  
Sherry and Robert Mason  
Gerald Mast  
Nathan and Sonya Mateer Rempel  
Eugene and Linda Matzat  
Linda and Lowell May  
Kevin and Marianne McCarthy  
Janet and Jeff McGowan  
Barbara McHugh  
Gary and Carol McKean  
Joann and Brian McMahon  
Sharon McManus  
Shari and Tom Mellin  
Brad and Mickey Miller  
Daniel and Nadine Miller  
Douglas Miller  
Phillip Mirowski  
Dr. and Mrs. Robert Mitchell

Janis L. Monteith  
Linda A Moore  
Christine and David Morrow  
Janice R. Muhr  
Elizabeth Mundy  
Mary Naquin  
Lewis and Belle Naylor  
Mark and Kathleen Neal  
Lawrence and Dru Neice  
Alan and Barbara Neidlinger  
Ruth Nieboer  
Northern Indiana Hearing Center  
Donald E. Nuner, Jr.  
Beverly O'Brien  
John and Janice O'Leary  
Daniel and Julie Ormsby  
David Lee and Jackie Overton  
Steve and Teresa Palmitier  
J Wayne and Lori Parsons  
Mary M Perron  
Katherine Perry  
Anne Petelle  
Scott and Patricia Pier  
Bill Piggot  
Jean Wright Pilot  
Suzanne Plummer  
Michael Pound  
Nadine and Floyd Quiggle  
Judith Racht  
Tami and Randall Raciti  
Jennifer and Tyler Ream  
Mary and Jan R. Reineke  
Margaret C Reverman  
Rieth-Riley Construction Co., Inc.  
Brenda and Rick Roberts  
Jane H. Robinson  
Jeff and Susan Robinson  
Gerald and Roberta Rohan  
Carol and Michael Rofls  
Paul and Melinda Romanetz  
Mary Ann and Randolph Rompola  
Brenda Ropp  
Carol and Charles Rosenberg  
John W Rosenthal  
Harvey and Janet Ross  
Elizabeth Rowe  
G Keith and Julie Rudolph  
Rosemary and Larry Rupp  
David and Mitzi Sabato  
Margaret and John Scanlan  
Darlene Scherer  
Edward and Nancy Schultz  
Jane Sears  
Tania Shaum  
Jane and Tim Short  
Dr. and Mrs. Stan Showalter  
Lucy Branson Smith  
Barbara and George Smucker  
Mark and Vicki Smucker  
Beth Snider

Richard and Sharon Sommers  
Oliver Songlingco  
Tom and Joyce Sopko  
Timothy Stabosz  
Nancy and Charles Stanton  
Laurie Starr and Patrick Flynn  
Elizabeth Stauffer  
Kathleen Stegmaier  
Jolene and Kurt Stiver  
Rebecca Stoltzfus and Kevin Miller  
Janice Stork  
Robert Tatina  
Darrel Tidaback and Laurel Thomas  
Mary Tulchinsky  
Garry and Margot Tutorow  
James and Susan Van Fleit  
Betsy Vanderburg  
Jim and Lorraine Veldman  
Joyce and William Veldman  
Ted and Nancy Waggoner  
Denise Wagner  
Joni Walter  
Anthony Warning and Martha Peterson  
Charles and Mary Weber  
John and Hannelore Weber  
Phid and Jeff Wells  
Nila and Walter Wells  
David Wemhoff  
Dorothy and Dar Wiekamp\*  
Michael Wiescher  
Jeff and Kelly Wilcoxson  
Marcus Winchester  
Greg and Pam Wingstrom  
Jody Wiseman  
James and Joann Wittenbach  
Melvin and Elaine Wright  
Thad Wright  
Anita and Paul Yoder  
Douglas and Janette Yoder  
Robert and Dorothy Yoder  
Linda Yoder  
Elizabeth Zapf  
Susan Zook and Kevin Gross

\*Deceased Charter Director  
\*\* Deceased

\*Deceased Charter Director  
\*\* Deceased



**1st Source Bank**

Antiques Roadshow  
Austin City Limits  
Black History Month 2026  
Great Performances  
Inside Indiana Business  
Legends: Bill Sexton  
Legends: The Veldman Family  
NOVA  
PBS News Hour  
Prime Time Programming  
South Bend Built by Baseball

**5 Points Apartments**

Miscellaneous Programming

**Afdent**

Children's Programming  
Prime Time Programming

**Aladdin's Eatery**

Miscellaneous Programming

**Jeannine and Nafe Alick**

Legends: Bill Sexton

**Alick's Home Medical**

Antiques Roadshow  
Black History Month 2026  
Lawrence Welk  
Legends: The Boling Family  
Legends: Bill Sexton  
Legends: The Veldman Family

**Anderson, Agostino & Keller P.C.**

Legends: Bill Sexton

**Anonymous (3)**

Legends: The Veldman Family

**John and Katie Anthony**

Legends: Bill Sexton  
Legends: The Veldman Family

**Art Barn School of Art**

Miscellaneous Programming

**Billie and David Bankoff**

Legends: Bill Sexton

**Barnes & Thornburg LLP**

Legends: Bill Sexton  
Legends: The Veldman Family

**Bauer Fund for Early Childhood Education of the Community Foundation of St. Joseph County**

Children's Programming

**Beacon Health System**

Legends: Bill Sexton  
Legends: The Veldman Family

**Big Idea Company**

Legends: Bill Sexton

**Bradley Company**

South Bend Built by Baseball

**John and Jo Broden**

Legends: Bill Sexton  
Legends: The Veldman Family

**Marsha Brooks**

Children's Programming

**Todd Bruce**

Legends: Bill Sexton  
Legends: The Veldman Family

**Fred and Toni Brueggmann**

Masterpiece  
PBS News Hour

**Burton's Laundry**

Legends: The Veldman Family

**Deb Cafiero**

Legends: The Veldman Family

**Center for Hospice Care**

Black History Month 2026  
Legends: Bill Sexton  
Legends: The Veldman Family

**Center for the Homeless**

Legends: The Veldman Family  
Miscellaneous Programming

**Edward and Carla Chester**

Legends: The Boling Family

**City of South Bend - Community Investment**

Legends: Bill Sexton  
Prime Time Programming

**City of South Bend - Mayor James Mueller**

Black History Month 2026  
Legends: Bill Sexton  
Legends: The Veldman Family

**Robert and Marguerite Clemency**

Legends: Bill Sexton  
Legends: The Veldman Family

**Marilyn Coddens**

Miscellaneous Programming

**Community Foundation of Elkhart County**

Legends: The Boling Family

**Edward, Nancy and Anna Coppola and Family**

Legends: Bill Sexton

**Corpus Christi Parish School**

Children's Programming

**Cosimo & Susie's A Bit of Italy**

America's Test Kitchen  
Lidia's Kitchen

**Creative Styles Salon**

Legends: The Boling Family

**Kevin and Sylvia Culp**

Legends: The Boling Family

**D & W, Inc.**

Business Programming

**Dan Berry Insurance**

Carl the Collector  
Legends: The Boling Family

**Dr. Frederick Dean**

Children's Programming

**Deb Childs - State Farm**

Black History Month 2026

**Jamee Decio**

Black History Month 2026  
Legends: The Boling Family  
Legends: The Veldman Family

**Delta Dental**

Children's Programming

**Aladean DeRose**

Legends: Bill Sexton

**Diocese of Fort Wayne-South Bend / Catholic Charities of Fort Wayne-South Bend**

Legends: The Veldman Family

**Drive & Shine**

Weather Channel

**Joel and Amy Duthie**

Legends: The Boling Family

**El Campito Child Development Center**

Hispanic Heritage Month 2025

**El Pescadito Learning Center, Inc.**

Hispanic Heritage Month 2025

**Elkhart Civic Theater**

Miscellaneous Programming

**Elkhart County Symphony**

Miscellaneous Programming

**Dr. J. Stuart and Joanne Engelberg**

Prime Time Programming

**Everwise Credit Union**

Black History Month 2026

**Angie and Phil Faccenda**

Legends: Bill Sexton

**Family Dental Health**

Miscellaneous Programming

**Bill and Kristin Fenech**

Legends: The Boling Family

**Ann and John Firth**

Legends: Bill Sexton

**Fischhoff National Chamber Music Association**

Prime Time Programming

**Dan Fitzpatrick**

Legends: Bill Sexton  
Legends: The Veldman Family

**Mary and Jay Flaherty**

Legends: Bill Sexton

**Foegley Landscape, Inc.**

Ken Burns' American Revolution

**Joyce and Roger Foley**

Ken Burns' American Revolution  
Legends: Bill Sexton

Legends: The Veldman Family

Rick Steves

South Bend Built by Baseball

**Food Bank of Northern Indiana**

Legends: The Veldman Family

**Jody and Mike Freid**

Legends: The Boling Family

Legends: Bill Sexton

Legends: The Veldman Family



**The Gates Family**  
South Bend Built by Baseball  
Legends: Bill Sexton  
Legends: The Veldman Family

**The Gavin Family**  
South Bend Built by Baseball

**Dr. Steve Gerber**  
Legends: The Boling Family

**Jacob German**  
Legends: Bill Sexton

**Girls on the Run**  
Miscellaneous Programming

**Maggie and Steve Goldberg**  
Black History Month 2026  
Children's Programming  
South Bend Built by Baseball

**Graham Family**  
Legends: Bill Sexton

**Gurley Leep Automotive Family**  
Legends: The Boling Family  
Legends: The Veldman Family

**Gymnastics Michiana**  
Children's Programming

**Habitat for Humanity of St. Joseph County**  
Legends: The Veldman Family

**Hass Hakim**  
Legends: The Boling Family

**Hayes Towers**  
Legends: Bill Sexton

**Heart of the Warrior Fund - Larry Davis**  
Children's Programming  
Economic Outlook Data Centers  
Special  
Legends: The Veldman Family

**Craig Heatherly**  
Legends: The Boling Family

**Helman Sechrist Stoelting Architecture**  
Legends: The Boling Family

**Jennifer and Fred Helmen**  
Black History Month 2026  
Legends: Bill Sexton  
Legends: The Veldman Family  
South Bend Built by Baseball

**Dr. Thomas and Eileen Hughes**  
Legends: The Veldman Family

**Douglas Hunt, former Indiana State Senator**  
America @ 250  
PBS News Hour  
South Bend Built by Baseball

**IBEW Local 153**  
America @ 250  
Black History Month 2026  
Economic Outlook Data Center  
Special  
Legends: The Veldman Family  
South Bend Built by Baseball

**Marybeth Inabnit**  
Legends: Bill Sexton

**Indiana Citizen Education Foundation**  
Miscellaneous Programming

**Indiana Kentucky Ohio Regional Council of Carpenters Local 413**  
Economic Outlook Data Centers  
Special  
South Bend Built by Baseball

**Indiana Public Broadcasting Stations - Indiana Secretary of State**  
Miscellaneous Programming

**Indiana Public Broadcasting Stations - Indiana State Teachers Association**  
Miscellaneous Programming

**Indiana Public Broadcasting Stations - Lumina Foundation**  
Prime Time Programming

**Indiana Public Broadcasting Stations - Managed Health Services Indiana, Inc.**  
Children's Programming

**Indiana Public Broadcasting Stations - Milk Bank**  
Children's Programming

**Indiana Public Broadcasting Stations - Visit Fort Wayne**  
Children's Programming

**Indiana Trust Wealth Management**  
Masterpiece  
Miscellaneous Programming  
PBS News Hour

**Ivy Tech Foundation**  
Miscellaneous Programming  
Prime Time Programming

**Jewish Federation of St. Joseph Valley**  
Legends: Bill Sexton  
Miscellaneous Programming

**Pamela Johnson**  
Great Performances

**Jones Petrie Rafinski**  
South Bend Built by Baseball

**Jay Jordan**  
Legends: Bill Sexton

**Judd Leighton Foundation, Inc.**  
Legends: Bill Sexton

**Judee's**  
Legends: Bill Sexton  
Women's Programming

**Maria Kaczmarek**  
Children's Programming

**Matthew Kahn and Janine Felder-Kahn**  
Legends: Bill Sexton

**Dennis Kaplan**  
Legends: The Boling Family

**Chris and Lorraine Karam**  
Legends: Bill Sexton

**Marijo and Kevin Kelly**  
Legends: Bill Sexton

**Daniel and Margarite Kinsey**  
Legends: The Boling Family

**Lillian Kinsey**  
Legends: The Boling Family

**Kosciusko County Community Foundation**  
Education Counts Michiana

**Andy and Joy Kostielney**  
Legends: Bill Sexton

**Kozmo Events**  
Miscellaneous Programming

**Nancy and Jim Krzyzewski**  
Legends: The Veldman Family  
South Bend Built by Baseball

**Kurt and Tessye Simon Fund for Holocaust Remembrance**  
Holocaust Programming

**Lake City Bank**  
American Experience  
American Woodshop  
Education Counts Michiana  
Experience Michiana  
Frontline  
Legends: The Veldman Family  
Miscellaneous Programming  
Nature  
NOVA  
Outdoor Elements  
This Old House

**Mike Leep, Sr.**  
Legends: Bill Sexton

**Leeper Park Art Fair**  
Prime Time Programming

**Logan Community Resources**  
Children's Programming

**Legends: The Veldman Family**  
Miscellaneous Programming  
Prime Time Programming

**The Joseph N. and Rosemary Low Family Foundation**  
Antiques Roadshow  
Children's Programming  
Finding Your Roots  
Great Performances  
History Programming  
Miscellaneous Programming  
PBS News Hour  
Rick Steves  
Travel Programming

**Lush Lighting Inc.**  
Miscellaneous Programming

**Kathy Malone Beeler and Brian Regan**  
Legends: Bill Sexton

**Manny's Sports Bar and Restaurant**  
Prime Time Programming



**Maple & White Design**

Legends: The Veldman Family

**Sara Marcus**

Children's Programming

**Marian High School**

Legends: The Veldman Family

**Ted and Tracy McCourtney**

Legends: Bill Sexton

**McDonald Physical Therapy**

Black History Month 2026

Legends: Bill Sexton

Legends: The Veldman Family

**Vicki McIntire and Charlie Hayes**

Legends: Bill Sexton

Legends: The Veldman Family

**Mex Express**

Prime Time Programming

**Michiana Antique Mall**

Miscellaneous Programming

**Michiana Eye Center**

Miscellaneous Programming

**Mid-City Supply**

This Old House

**Ken Milani**

Legends: Bill Sexton

**Miller Poultry**

Antiques Roadshow

Dinner & a Book

Finding Your Roots

Masterpiece

Miscellaneous Programming

PBS News Hour

**Janet and Steve Mitros**

South Bend Built by Baseball

**Montessori Academy Edison Lakes**

Children's Programming

**Libby Mountsier and Larry M. Davis**

Ken Burns' American Revolution

Legends: Bill Sexton

**Carmi and Chris Murphy**

Legends: Bill Sexton

Legends: The Veldman Family

**Musical Arts Indiana**

Prime Time Programming

**Tom Naquin Automotive Family**

Legends: The Boling Family

**Naturally Native Nursery**

Miscellaneous Programming

**Navarre Hospitality Group**

Legends: Bill Sexton

Legends: The Veldman Family

**Kathleen and Mark Neal**

Legends: Bill Sexton

**Andy and Liz Nemeth**

Legends: The Boling Family

**Niles Renaissance Faire**

Miscellaneous Programming

**Ninja Golf!**

Miscellaneous Programming

Children's Programming

**Kathy Nobles, State Farm Agent**

Legends: The Boling Family

**Notre Dame Federal Credit Union**

Legends: The Veldman Family

Odd Squad

South Bend Built by Baseball

**Mary Pat and Dick Nussbaum**

Legends: Bill Sexton

Legends: The Veldman Family

South Bend Built by Baseball

**OPS Living**

Children's Programming

Legends: The Veldman Family

Miscellaneous Programming

South Bend Built by Baseball

**PNC Bank**

Economic Outlook

**PNC Grow Up Great**

PBS Kids

**Patrick Industries, Inc.**

Legends: The Boling Family

**Peacock & Company**

Miscellaneous Programming

**Frank and Jennifer Perri**

Legends: The Veldman Family

**Pfeifer, Morgan & Stesiak**

Amanpour on PBS

Austin City Limits

Black History Month 2026

Legends: Bill Sexton

PBS News Hour

Prime Time Miscellaneous

Legends: The Veldman Family

**Barb and John Phair**

Legends: Bill Sexton

Legends: The Veldman Family

Phoebe & Jay

**Plumbers and Pipefitters Local Union 172**

South Bend Built by Baseball

**Pokagon Band of Potawatomi and Four Winds**

Legends: Bill Sexton

**Potawatomi Zoological Society**

Children's Programming

Legends: The Veldman Family

Miscellaneous Programming

**Premier Arts - Craig Gibson**

Legends: The Boling Family

Miscellaneous Programming

**Proteus, Inc.**

Miscellaneous Programming

Prime Time Programming

**Raclin Murphy Museum of Art**

Prime Time Programming

**Sheriff Bill and Kim Redman**

Black History Month 2026

Legends: Bill Sexton

**River Bend Industrial Solutions**

Legends: Bill Sexton

This Old House

**River Front Forge**

Miscellaneous Programming

**Rocco's Restaurant**

Legends: The Veldman Family

**Ronald McDonald House Charities**

Miscellaneous Programming

**Rosenthal | Henry Capital Advisors**

Legends: The Veldman Family

**Sue and Pat Ruszkowski**

Legends: Bill Sexton

Legends: The Veldman Family

**Saint Joseph Health System**

Legends: The Veldman Family

**Judy and Bob Schmuhl**

Frontline

Masterpiece

**Ethel and James Seitz**

South Bend Built by Baseball

**Amy and Amish Shah**

Legends: The Boling Family

**Shakespeare at Notre Dame**

Miscellaneous Programming

**Silver Star Leather**

Miscellaneous Programming

Prime Time Programming

**South Bend Children's Dentistry**

Children's Programming

**South Bend Children's Museum**

Miscellaneous Programming

**South Bend Civic Theatre**

Miscellaneous Programming

**South Bend Common Council & City Clerk Bianca Tirado**

Legends: Bill Sexton

South Bend Built by Baseball

**South Bend Community School Athletics**

South Bend Built by Baseball

**South Bend Community School Corporation**

Black History Month 2026

**South Bend Cubs**

Children's Programming

Miscellaneous Programming

Prime Time Programming

**South Bend Human Rights Commission**

Miscellaneous Programming



**South Bend International Airport**

Miscellaneous Programming  
Weather Channel

**South Bend Symphony Orchestra**

Miscellaneous Programming

**South Bend Youth Symphony Orchestra**

Miscellaneous Programming

**St. Margaret's House**

Legends: The Veldman Family

**Kelly and Brian Stanley & Mary Jane Stanley**

Legends: Bill Sexton

**State Representative Maureen Bauer**

Black History Month 2026

**Steel Warehouse**

Legends: The Veldman Family  
South Bend Built by Baseball

**Stephanie Krol Public Relations**

Legends: The Boling Family

**Stephenson's of Elkhart**

Legends: The Boling Family

**Stifel - The Elkhart Group**

Legends: The Boling Family

**Stitch 'n Time Fabrics**

Quilting Programs  
Sewing Programs

**Joey and Kurt Stiver**

Children's Programming

Legends: Bill Sexton

South Bend Built by Baseball

**Daniel and Katie Storino**

Legends: Bill Sexton

**John and Claire Storino**

Legends: Bill Sexton

**Tristh and Don Storino**

Legends: Bill Sexton

**The History Museum**

Legends: The Veldman Family

**The Lauber Kitchen and Bar**

Legends: Bill Sexton

**The Lerner Theatre**

Miscellaneous Programming  
Prime Time Programming

**The PC Doctor**

Business Programming

**The Rex and Alice A. Martin Foundation**

Dinner & a Book

Legends: The Boling Family

**Nicholas Timm, MD, Deborah Longworth & Smudge the Wonder Whippet**

NOVA

**Tire Rack**

Black History Month 2026

Legends: Bill Sexton

**Tolson Center, Inc.**

Phoebe & Jay

**Linda and Mark Toth**

Black History Month 2026

**Tri-State Maintenance**

Business Programming  
News Programming

**University of Notre Dame**

Hispanic Heritage Month 2025

Legends: Bill Sexton

Legends: The Veldman Family

**Venues Parks and Arts - Byers Softball Complex**

South Bend Built by Baseball

**Village at Winona**

Children's Programming

Dinner & a Book

History Detectives

Miscellaneous Programming

**Visit Fort Wayne**

Children's Programming

**WVPE**

PBS News Hour

Prime Time Programming

Washington Week

**Warsaw Public Library**

Children's Programming

Miscellaneous Programming

**Wild Rose Moon**

Miscellaneous Programming  
Prime Time Programming

**William K. Warren & Andrew N. Warren**

Legends: Bill Sexton

**Judy and Richard Wein**

Children's Programming

**Welch Packaging**

Legends: The Boling Family

**Carolyn Woo and David Bartkus**

Legends: Bill Sexton

**YMCA of Greater Michiana**

Children's Programming  
Miscellaneous Programming

**YWCA - North Central Indiana**

Miscellaneous Programming

**Roberta and Ben Ziolkowski**

Legends: Bill Sexton

**PBS MICHIANA BUSINESS CLUB**

**Chairman's Club (\$1,000)**

Lyons Industries, Inc.  
Midwest Cardiovascular Research & Education Foundation

**President's Club (\$500)**

CJ's Pub  
Sylvester & Tessie Kaminski Foundation  
Stephen K. Woods, P.C.

**Corporate Club (\$250)**

THK Law, LLP

**PBS MICHIANA KIDS CLUB**

Chick-Fil-A  
Mossberg & Company  
Nothing Bundt Cakes  
St. Joe County Public Library  
Sylvester & Tessie Kaminski Foundation

**PRIVATE AND CORPORATE FOUNDATION GRANTS**

Anonymous (2)

The Bowsher Booher Foundation  
Community Foundation of Elkhart County

Community Foundation of St. Joseph County

Crossroads United Way

Dekko Foundation

Fred Rogers Productions

John W. Anderson Foundation

Kosciusko County Community Foundation, Inc.

The Pokagon Fund

Stanley A. and Flora P. Clark Memorial Community Trust Foundation

**GENERAL OPERATING GRANTS**

1st Source WNIT Fund - CFSJC

Emil Smolek Endowment Fund - CFPC

The Oliver & Cunningham Family Memorial Trust Foundation

The Rex and Alice A. Martin Foundation, Inc.

WNIT Public Television Fund - CFEC

WNIT Public Television Fund - CFSJC

WNIT Public Television Fund - MCCF

**PROMOTIONAL SUPPORT**

Alpha Graphics

Duley Press

Express Press

Rink Printing

Information correct as of release date. For a full listing of program sponsors, please contact WNIT.

# PBS Michiana WNIT

## Ways to Watch



Did you know that you can now watch PBS Michiana - WNIT in more ways than ever? We have added live streaming options and other services to better enable you to watch what you want from WNIT, when you want to and where you want to.

### **PBS Michiana - WNIT** **Channel 34.1**

34.1 - Over the Air  
Comcast - 10, 191, 1035  
26 in LaPorte and Valparaiso  
Dish - 34 or 1034  
DirecTV - 34 or 1034  
AT&T U-verse - 34 or 1034  
Mediacom - 704



[Live on our website](#)

[On demand](#)

[PBS video app](#)

Stream 4000+ PBS/PBS Michiana - WNIT local shows on demand. (FREE)



**PBS Michiana Passport**

Extended access to 1,500+ episodes. PBS Michiana Passport is an added benefit of station membership.



[YouTube](#)

YouTube TV  
Hulu + Live  
Amazon Prime Video

### **PBS Michiana - WNIT** **Channel 34.2**

34.2 - Over the Air   
Comcast - 371  
Mediacom - 120



### **PBS Michiana - WNIT** **Channel 34.3**

34.3 - Over the Air  
Comcast - 1159  
Mediacom - 694  
Charter - 196  
Quality Cablevision - 34.3  
Sister Lakes Cable TV - 34.3  
Acme Communications - 36  
Winamac CATV - 34  
Pulaski IPTV -36  
RTC1 - 9  
DirecTV - 288

[Livestream](#)

# WNIT Channel Guide

	COMCAST			DISH/DIRECTV OR AT&T U-VERSE *		MEDIACOM		
	SD	HD	SD 34.2	SD	HD	SD	HD	SD 34.2
INDIANA						4	704	120
Argos	-	-	371	34	-	4	704	120
Bourbon	-	-	371	34	-	4	704	120
Bremen	-	-	371	34	-	4	704	120
Bristol	10	191	371	34	-	-	-	-
Culver	-	-	371	34	-	4	704	120
Elkhart	10	191	371	34	-	-	-	-
Goshen	10	191	371	34	-	-	-	-
Jefferson Township	10	191	371	34	1034	-	-	-
Knox	-	-	371	34	1034	4	704	120
LaGrange County	-	-	371	34	1034	3	704	-
Lakeville	-	-	371	34	1034	4	704	120
LaPaz	-	-	371	34	1034	4	704	120
LaPorte (city)	-	26	371	34	1034	-	-	-
LaPorte County (Eastern)	10	191	371	34	1034	-	-	-
LaPorte County (Western)	-	26	371	34	1034	-	-	-
Leesburg	-	-	-	-	-	4	704	120
Michigan City	-	26	371	34	1034	-	-	-
Middlebury	10	191	371	34	1034	-	-	-
Milford	-	-	-	-	-	4	704	120
Mishawaka	10	191	371	34	1034	-	-	371
Nappanee	10	191	371	34	1034	4	704	120
North Judson	10	191	371	34	1034	4	704	120
North Liberty	10	191	371	34	1034	4	704	120
North Webster	-	-	-	-	-	4	704	120
Pierceton	-	-	-	-	-	4	704	120
Plymouth	10	191	371	34	1034	-	-	-
Porter County	-	26	371	34	1034	-	-	-
Rochester	10	191	371	34	1034	-	-	-
South Bend	10	191	371	34	1034	-	-	371
Syracuse	-	-	371	34	1034	4	704	120
Tippecanoe	-	-	-	-	-	4	704	120
Valparaiso	-	26	371	34	1034	-	-	-
Walkerton	-	-	371	34	1034	4	704	-
Wakarusa	10	191	371	34	1034	-	-	-
Warsaw	10	191	371	34	1034	-	-	-
Winamac	10	191	-	-	-	-	-	-
MICHIGAN								
Benton Harbor	10	191	371	34	1034	-	-	-
Berrien Springs	10	191	371	34	1034	-	-	-
Buchanan	10	191	371	34	1034	-	-	-
Cassopolis	10	191	371	34	1034	-	-	-
Constantine	10	191	371	34	1034	-	-	-
Dowagiac	10	191	371	34	1034	-	-	-
Edwardsburg	10	191	371	34	1034	-	-	-
New Buffalo	10	191	371	34	1034	-	-	-
Niles	10	191	371	34	1034	-	-	-
Sister Lakes	10	191	371	-	-	-	-	-
Stevensville	10	191	371	34	1034	-	-	-
St. Joseph (city)	10	191	371	34	1034	-	-	-
Three Rivers	11	-	-	-	-	-	-	-
White Pigeon	10	191	371	34	1034	-	-	-

## CHARTER CABLE IN STURGIS, MI HAS REASSIGNED ITS CHANNELS

**Original positions are: Base Tier**

WNIT 34.1, #2. New assignment: #12.

WNIT 34.1, #781. New assignment: #785.

WNIT 34.1, #135. New assignment: #195.

After Charter's conversion to all-digital, station will continue to be available to ALL Charter customers served by the above lineups in a digital format on the basic tier of service.

### ROKU

WNIT is excited to announce the much-anticipated PBS and PBS KIDS channels are now available on Roku! The PBS channel features videos from popular PBS programs. Once you activate the PBS channel and choose WNIT as your local station, you can stream content from WNIT's local productions, as well as short, web-original videos from Webby Award-winning PBS Digital Studios. With the arrival of the PBS KIDS channel, junior streamers can enjoy full-length episodes and clips from great shows including *Curious George*, *Daniel Tiger's Neighborhood*, *Dinosaur Train*, *Super WHY!* and *The Cat in the Hat Knows a Lot About That!*

## Michiana Public Media WNIT



Michiana

**PBS Michiana - WNIT  
Channel 34.1**



Michiana  
create

**PBS Michiana - WNIT2  
Channel 34.2**



**PBS Michiana WNIT3  
PBS KIDS 24/7  
Channel 34.3**



Visit us at [wnit.org](http://wnit.org)

### MAILING ADDRESS

WNIT Center for Public Media  
PO Box 7034  
South Bend, IN 46634-7034

### STREET ADDRESS

300 West Jefferson Boulevard  
South Bend, IN 46601

**Phone:** (574) 675-9648

**Email:** [wnit@wnit.org](mailto:wnit@wnit.org)

©2026 Michiana Public Broadcasting Corporation Statement of Frequency: WNIT PUBLIC TELEVISION PLANNER (USPS 103-650 ISSN 1523-9373) is digitally published monthly and when printed is published bi-monthly by The Michiana Public Broadcasting Corporation, a non-profit corporation in the State of Indiana at 300 West Jefferson Boulevard, South Bend, IN 46601. Periodical postage paid at South Bend, IN and additional mailing offices. POSTMASTER: Send address changes to P.O. Box 7034, South Bend, IN 46634-7034.

Editor-in-Chief: Cindy McCraner.

Editor & Designer: Ginger Santiago.

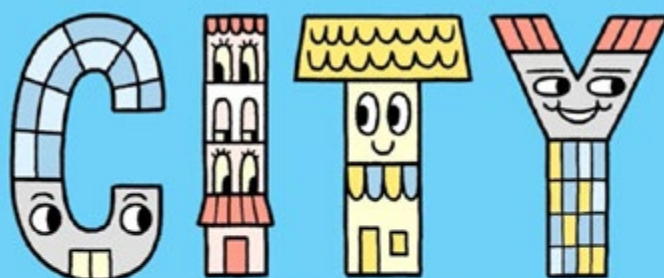
# Coming in June!



**The final season (Season 11) of Grantchester premieres on Sunday, June 14, 2026, at 9/8c.** The last chapter, consisting of new episodes, will run through the summer, bringing the beloved British mystery series to a close after 11 seasons.

There's no shortage of murder and mayhem in the seemingly quiet 1950s Cambridgeshire village of Grantchester, where a vicar turned amateur sleuth helps the local Detective Inspector.

**[Watch the Season 11 preview](#)**



**Beginning June 12, 2026, PBS KIDS premieres City Island: USA!**, a special six-episode miniseries of animated shorts where characters Watt and Windy travel across the country, celebrating America's 250th anniversary. Part of the "PBS KIDS Across America" initiative, these episodes showcase landmarks and history from across the U.S. regions.